



HOULIHAN LAWRENCE
COMMERCIAL GROUP



Land For Sale

000 ALBANY POST ROAD
CROTON-ON-HUDSON, NY

OFFERED AT \$600,000

- 2.11 acres of vacant land for sale
- Owner offering option build to suit
- It is part residential and part highway commercial
- Present all offers

Houlihan Lawrence Commercial Group
800 Westchester Avenue, Suite N-517
Rye Brook, NY 10573
O. 914 798 4900

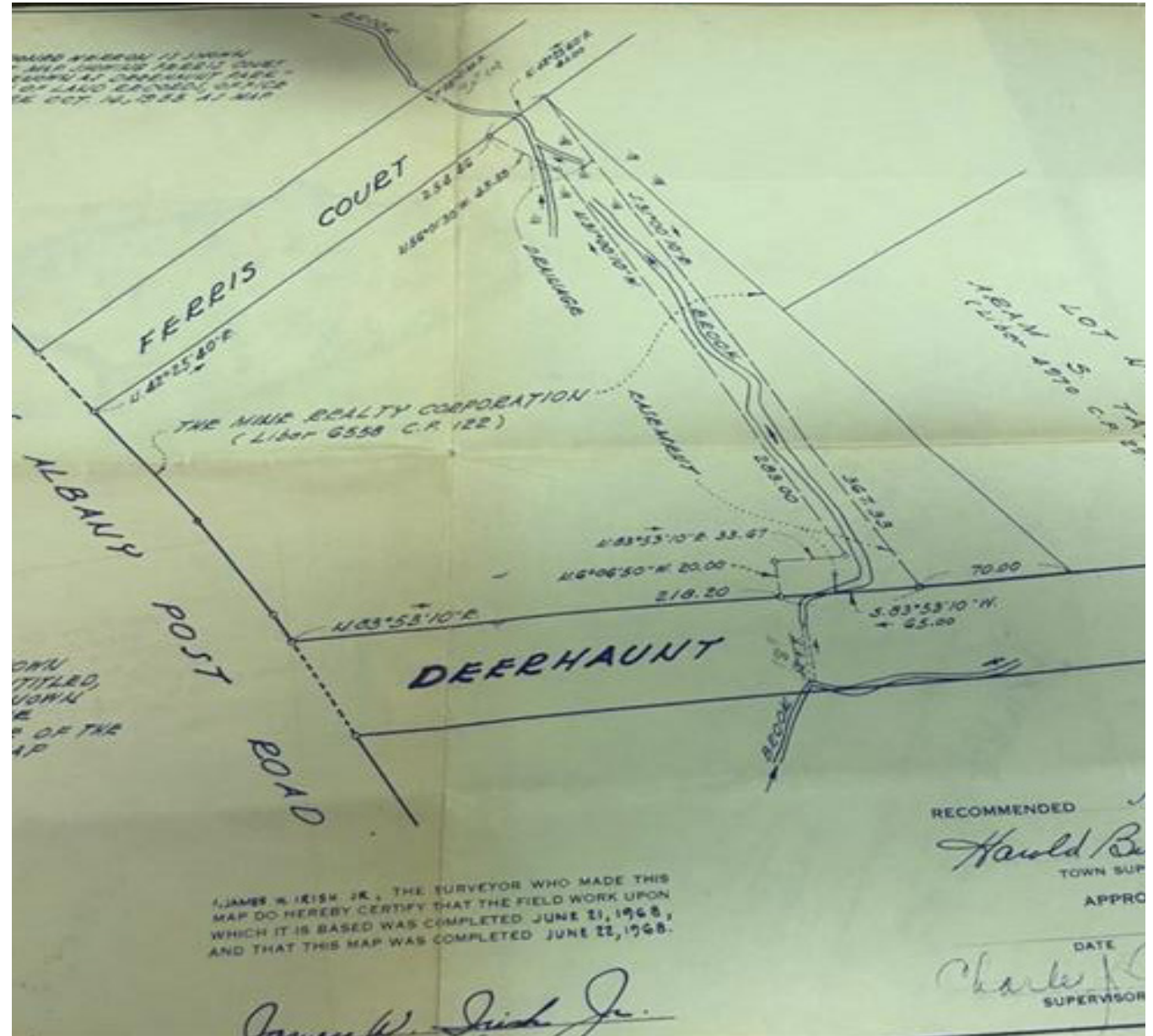


HOULIHAN LAWRENCE
COMMERCIAL GROUP

Survey

000 ALBANY POST ROAD
CROTON-ON-HUDSON, NY

OFFERED AT \$600,000



Houlihan Lawrence Commercial Group
800 Westchester Avenue, Suite N-517
Rye Brook, NY 10573
O. 914 798 4900



HOULIHAN LAWRENCE
COMMERCIAL GROUP

Plans

000 ALBANY POST ROAD
CROTON-ON-HUDSON, NY

OFFERED AT \$600,000



Houlihan Lawrence Commercial Group
800 Westchester Avenue, Suite N-517
Rye Brook, NY 10573
O. 914 798 4900

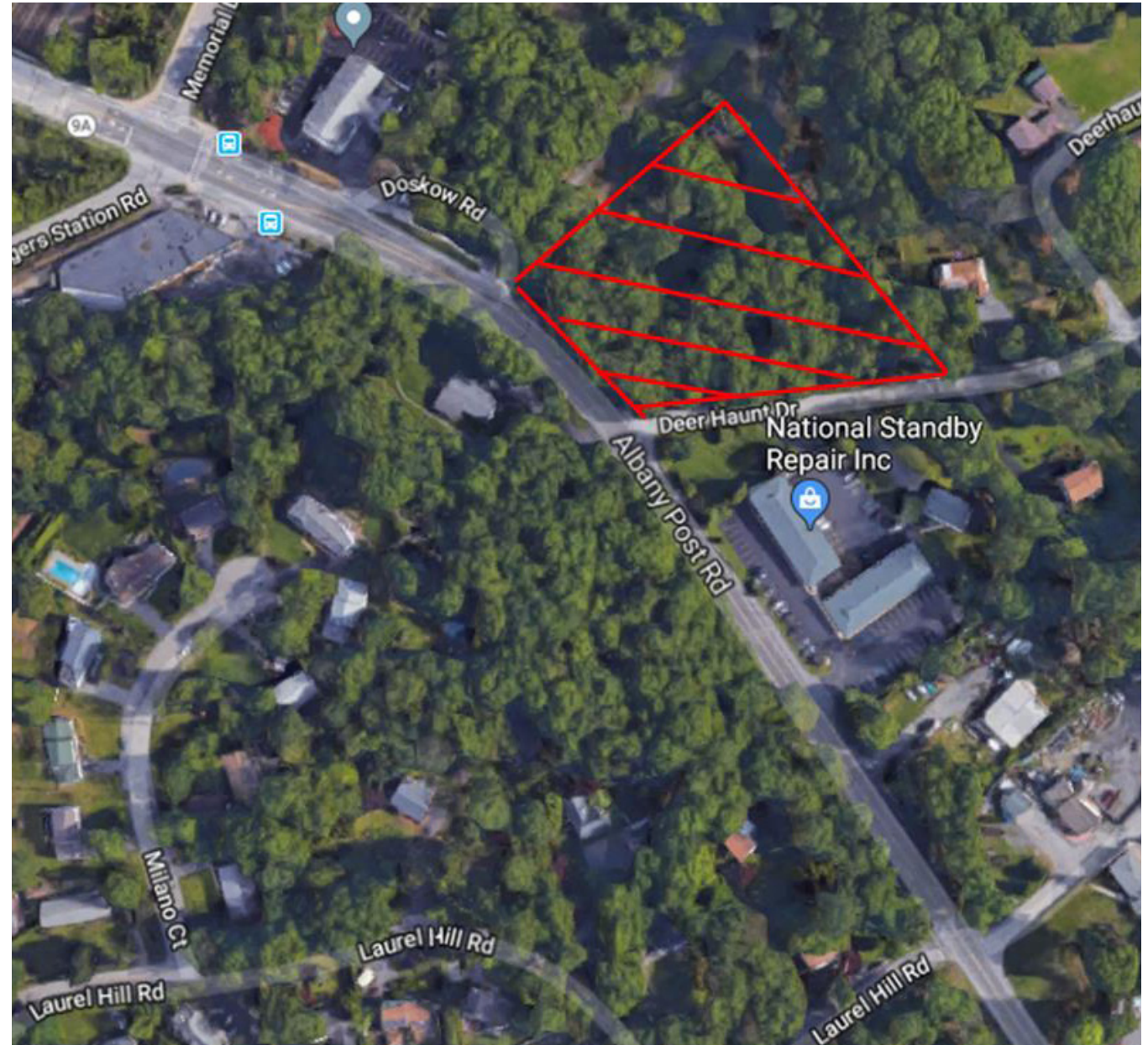


HOULIHAN LAWRENCE
COMMERCIAL GROUP

Aerial View

000 ALBANY POST ROAD
CROTON-ON-HUDSON, NY

OFFERED AT \$600,000



Houlihan Lawrence Commercial Group
800 Westchester Avenue, Suite N-517
Rye Brook, NY 10573
O. 914 798 4900

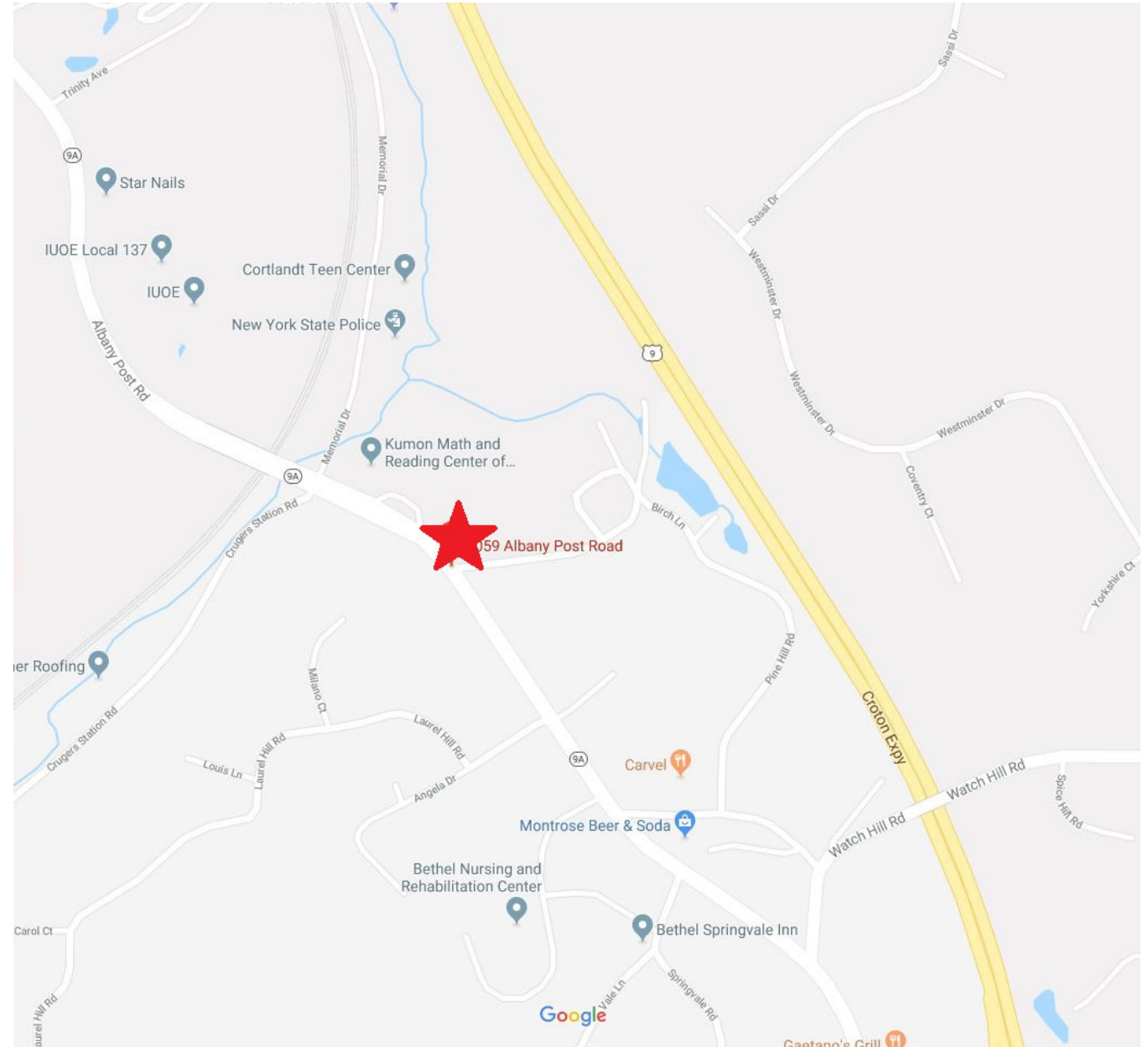


HOULIHAN LAWRENCE
COMMERCIAL GROUP

Regional Map

000 ALBANY POST ROAD
CROTON-ON-HUDSON, NY

OFFERED AT \$600,000



Houlihan Lawrence Commercial Group
800 Westchester Avenue, Suite N-517
Rye Brook, NY 10573
O. 914 798 4900

The information contained in this Offering Memorandum is confidential, furnished solely for the purpose of review by a prospective purchaser of certain information relating to the property mentioned herein (the "Property"), and is not to be used for any other purpose or made available to any other person without the prior written consent of HLCG. The material is subject to errors and omissions and based on part upon information supplied by sources deemed reliable.