

+/- 10,000 SF of Industrial Space Available

3721 Atmore St Charlotte, NC 28205



Greg Godley

GJGodley@legacycre.com

704-904-2383

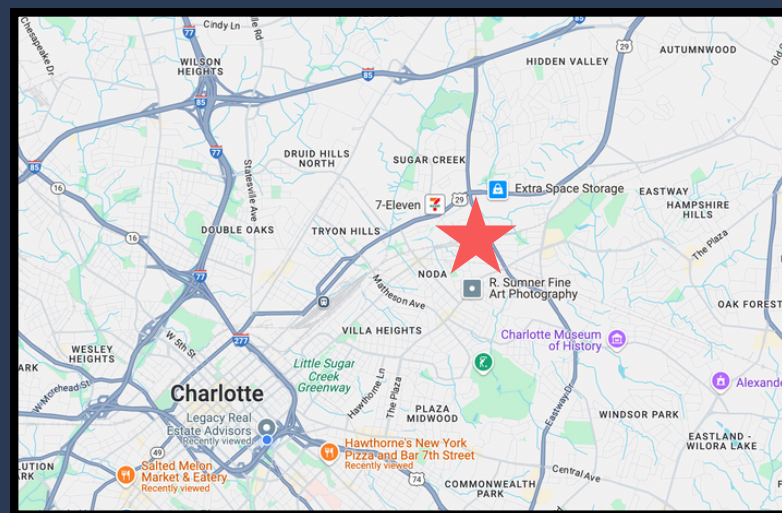
Andrew Pace

Apace@legacycre.com

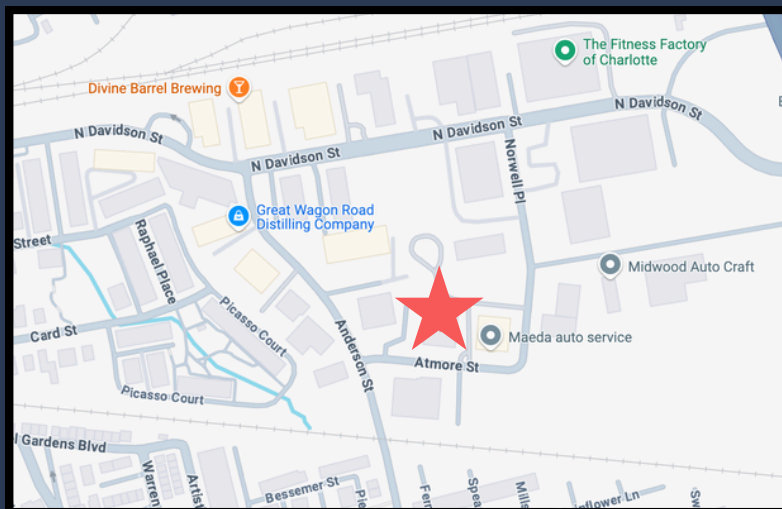
704-999-4061

SITE DESCRIPTION

- Building Size: +/- 10,000 SF
- Lot Size: 0.75 AC
- Year Built: 1971
- Construction: Masonry
- Water: City
- Sewer: City
- Heating: Gas
- TI Allowance Available
- Zoning: TOD-TR



Zoomed-Out View



Zoomed-In View

See The Potential Of This Space

+/- .75 AC Available

Building Size
+/- 10,000 SF

Office Space
+/- 2,720 SF

*Ample Parking
Included*

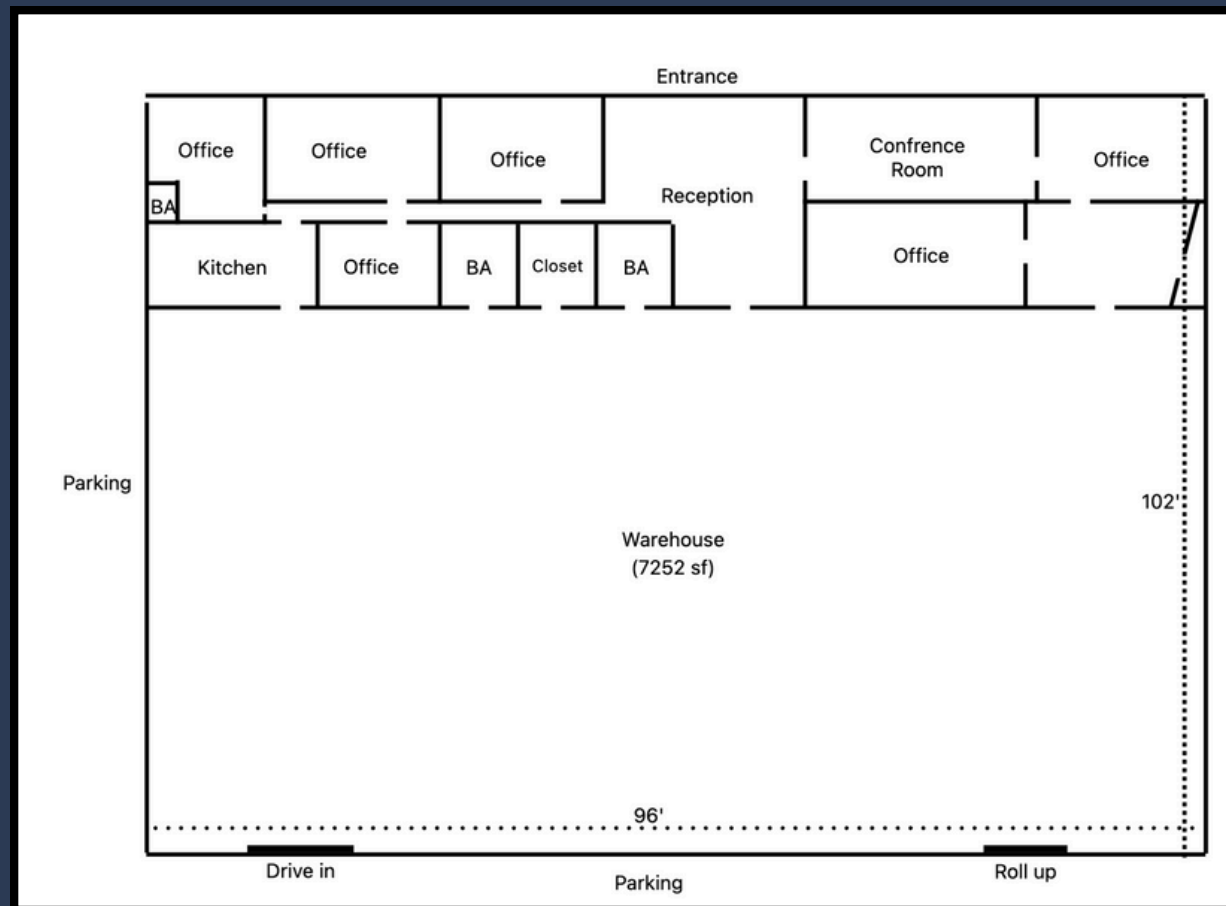


Property Highlights

- Drive-In Bays: 1
- Dock-High Door: 1
- Clear Height: 12'
- Available Space: +/- 10,000 SF
- Lease Term: Negotiable
- Rental Rate: \$12.00 /SF/YR
- Space Use: Industrial



Interior Layout of 3721 Atmore St, Charlotte, NC 28205



Location Highlights

- In the trendy NoDa neighborhood: Arts, culture, and nightlife
- Minutes from downtown Charlotte and major highways
- Walkable area with breweries, restaurants, and shops
- Close to Sugar Creek Light Rail Station



For More Information



Greg Godley

GJGodley@legacycre.com

704-904-2383



Andrew Pace

APace@legacycre.com

704-999-4061