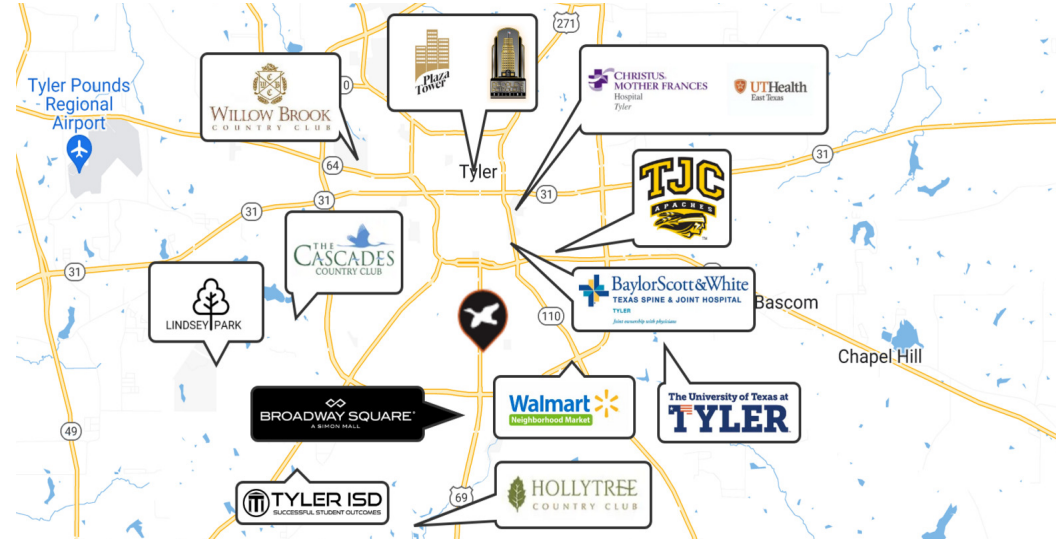


# OAK PLAZA OFFICE PARK

3300 S. Broadway Ave, Tyler, TX 75701

FOR LEASE



## OFFERING SUMMARY

Lease Rate:	Full service rate! Includes all utilities, janitorial & wifi.
Available SF:	468 - 1,967 SF
Zoning:	RPO

## PROPERTY OVERVIEW

Located on South Broadway Avenue near the lighted intersection of Amherst Drive.

Strategically located between Downtown & South Tyler. Surrounded by densely populated neighborhoods and convenient to the medical district, retailers and restaurants.

## PROPERTY HIGHLIGHTS

- Newly renovated common areas and office suites
- Executive suites available
- Elevator in each building
- Ample parking for office or medical
- Professional property management
- Secure access outside of normal business hours
- Parking Ratio 1:292



**Drake Real Estate & Investments**  
11621 CR 166, Tyler, TX 75703  
903.581.3737

**DRAKETEXAS.COM**

### Hagan Baker

**Senior Vice President, Office, Medical, Industrial**  
903.405.1954  
hagan@draketexas.com

### Mitchell Nejame

**Associate, Office, Medical, Industrial**  
903.780.9029  
mitchell@draketexas.com



# OAK PLAZA OFFICE PARK

3300 S. Broadway Ave, Tyler, TX 75701

FOR LEASE



**Drake Real Estate & Investments**

11621 CR 166, Tyler, TX 75703  
903.581.3737

**DRAKETEXAS.COM**

**Hagan Baker**

**Senior Vice President, Office, Medical,  
Industrial**

903.405.1954

hagan@draketexas.com

**Mitchell Nejame**

**Associate, Office, Medical, Industrial**

903.780.9029

mittchell@draketexas.com

# OAK PLAZA OFFICE PARK

3300 S. Broadway Ave, Tyler, TX 75701

FOR LEASE

## SUITE AVAILABILITY

SUITE	RENTABLE SF	MONTHLY RATE
105	729	\$1,280.00

## BUILDING 1 | FIRST FLOOR



**Drake Real Estate & Investments**  
11621 CR 166, Tyler, TX 75703  
903.581.3737

**DRAKETEXAS.COM**

**Hagan Baker**  
Senior Vice President, Office, Medical,  
Industrial  
903.405.1954  
hagan@draketexas.com

**Mitchell NeJame**  
Associate, Office, Medical, Industrial  
903.780.9029  
mitchell@draketexas.com

# OAK PLAZA OFFICE PARK

3300 S. Broadway Ave, Tyler, TX 75701

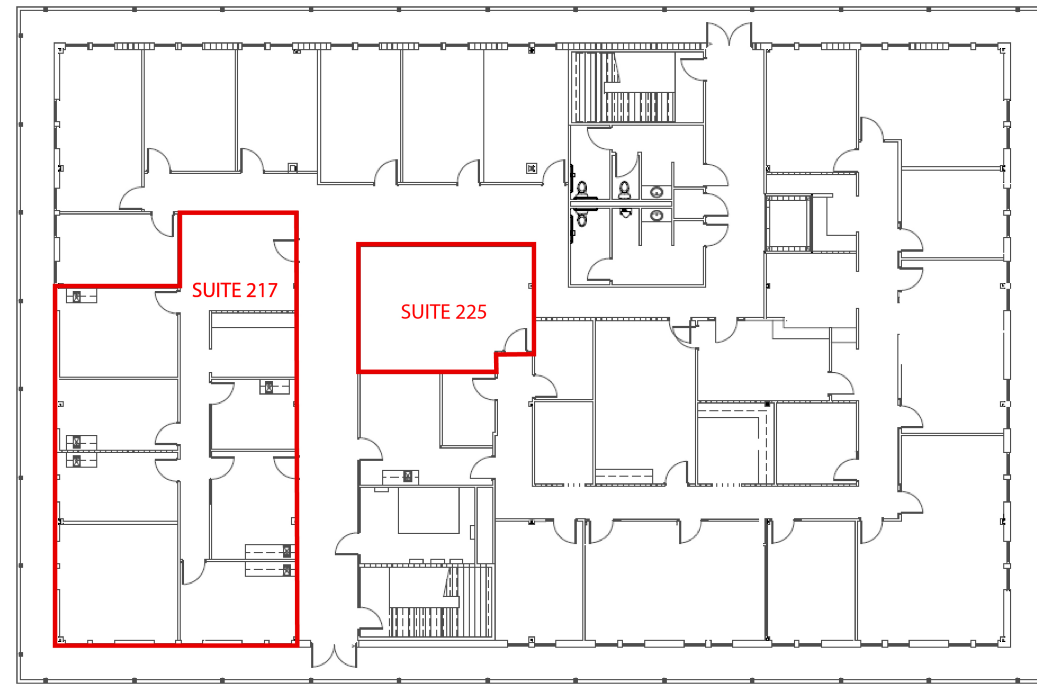
FOR LEASE

## SUITE AVAILABILITY

SUITE	RENTABLE SF	MONTHLY RATE
217*	1,967	\$3,800.00
225	468	\$805.00

\*Second generation medical space. Can also facilitate professional office use.

## BUILDING 3 | SECOND FLOOR



**Drake Real Estate & Investments**  
11621 CR 166, Tyler, TX 75703  
903.581.3737

**DRAKETEXAS.COM**

**Hagan Baker**  
Senior Vice President, Office, Medical,  
Industrial  
903.405.1954  
hagan@draketexas.com

**Mitchell Nejame**  
Associate, Office, Medical, Industrial  
903.780.9029  
mitchell@draketexas.com