



Property Lines are Estimates

## 3855 E Main Street

Columbus, Ohio 43213

### Property Features

- 0.6 Acre Lot For Sale in Bexley
- Excellent Exposure with 22,052 VPD (2025)
- 140' Frontage on E Main Street
- Zoned GC
- Suitable for Retail or Commercial Users
- Front and Rear Access for Convenience
- All Utilities Available on Site
- Convenient Access to Major Freeways Including I-70

**Sale Price: \$495,000**



For more information:

**Bastian Gehrler**

614 940 4032 • bgehrer@ohioequities.com

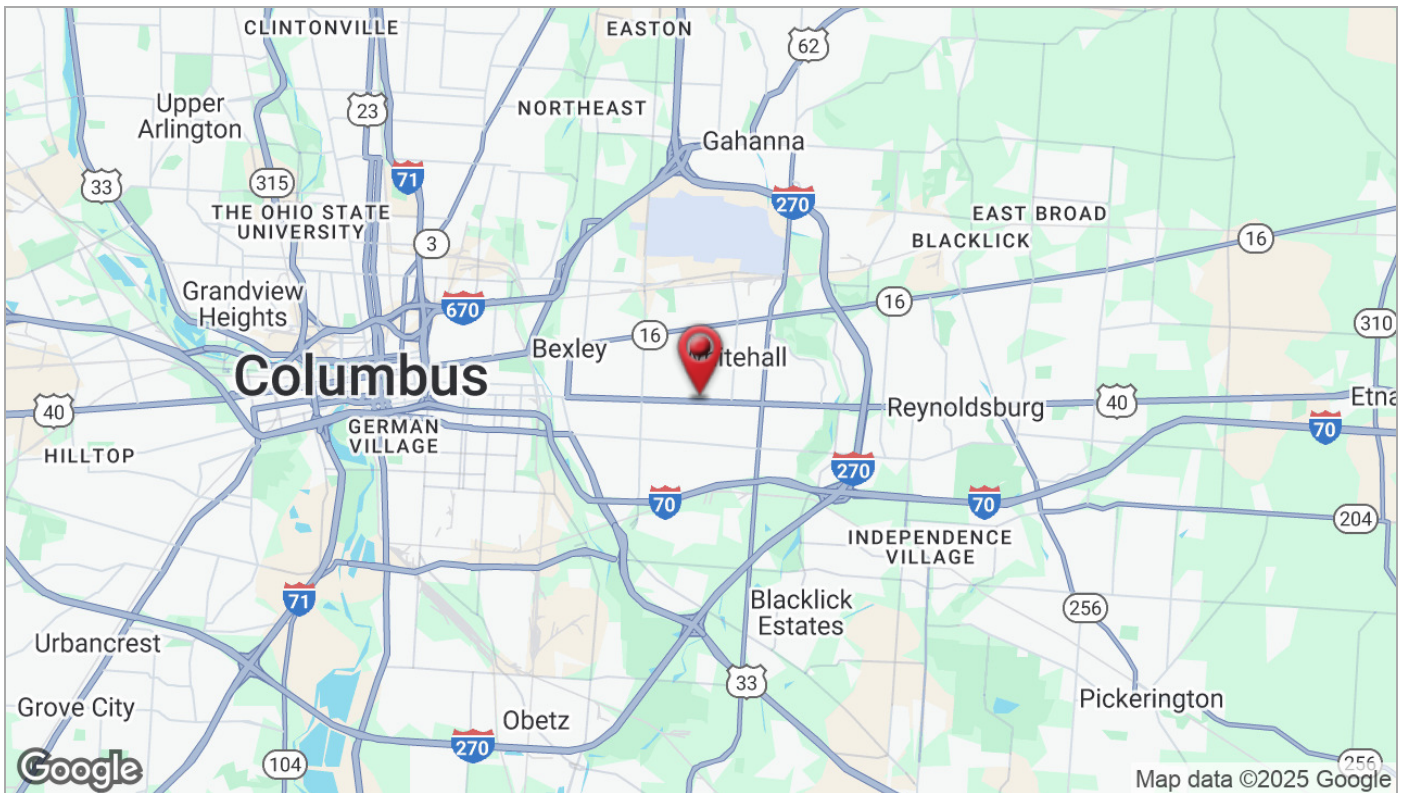
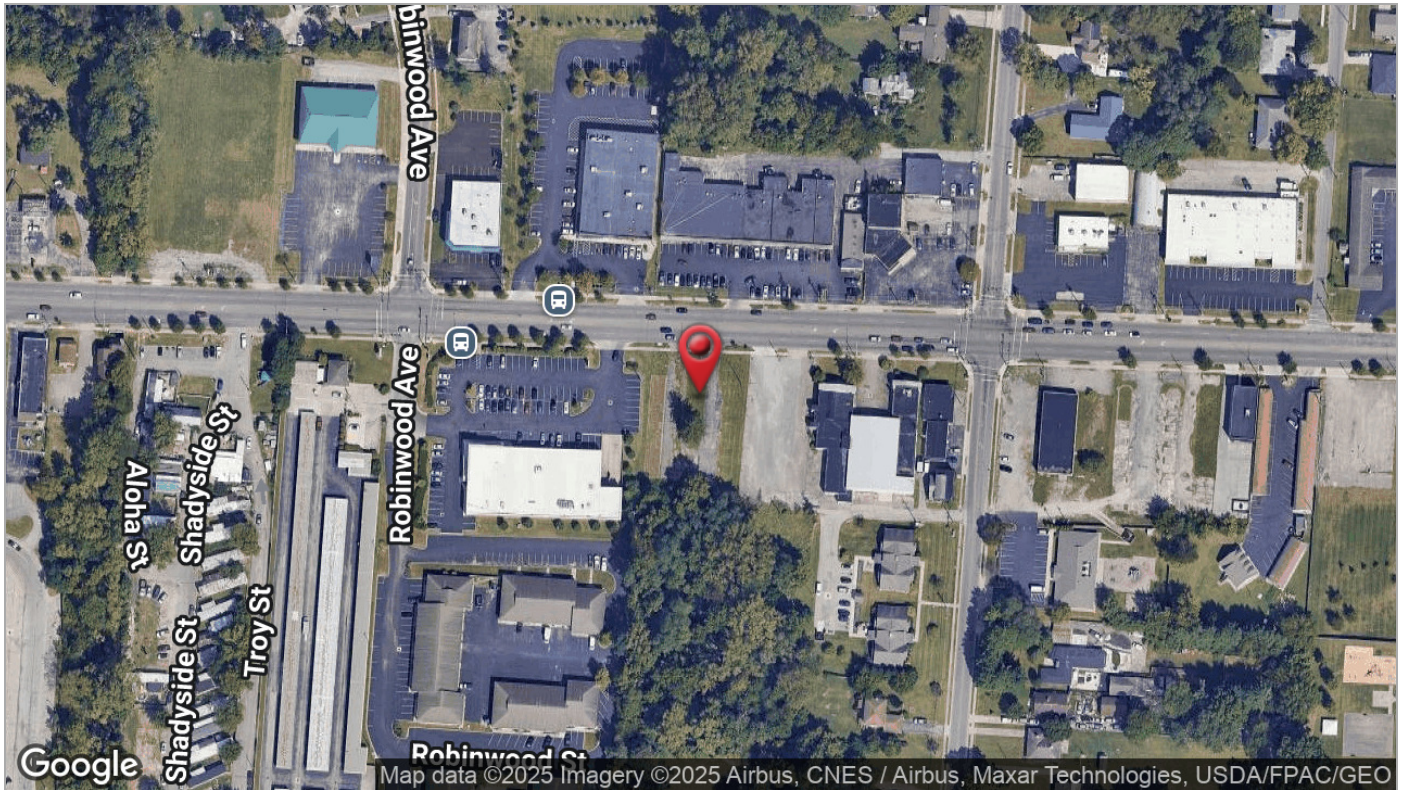
**Ryan McGreevy**

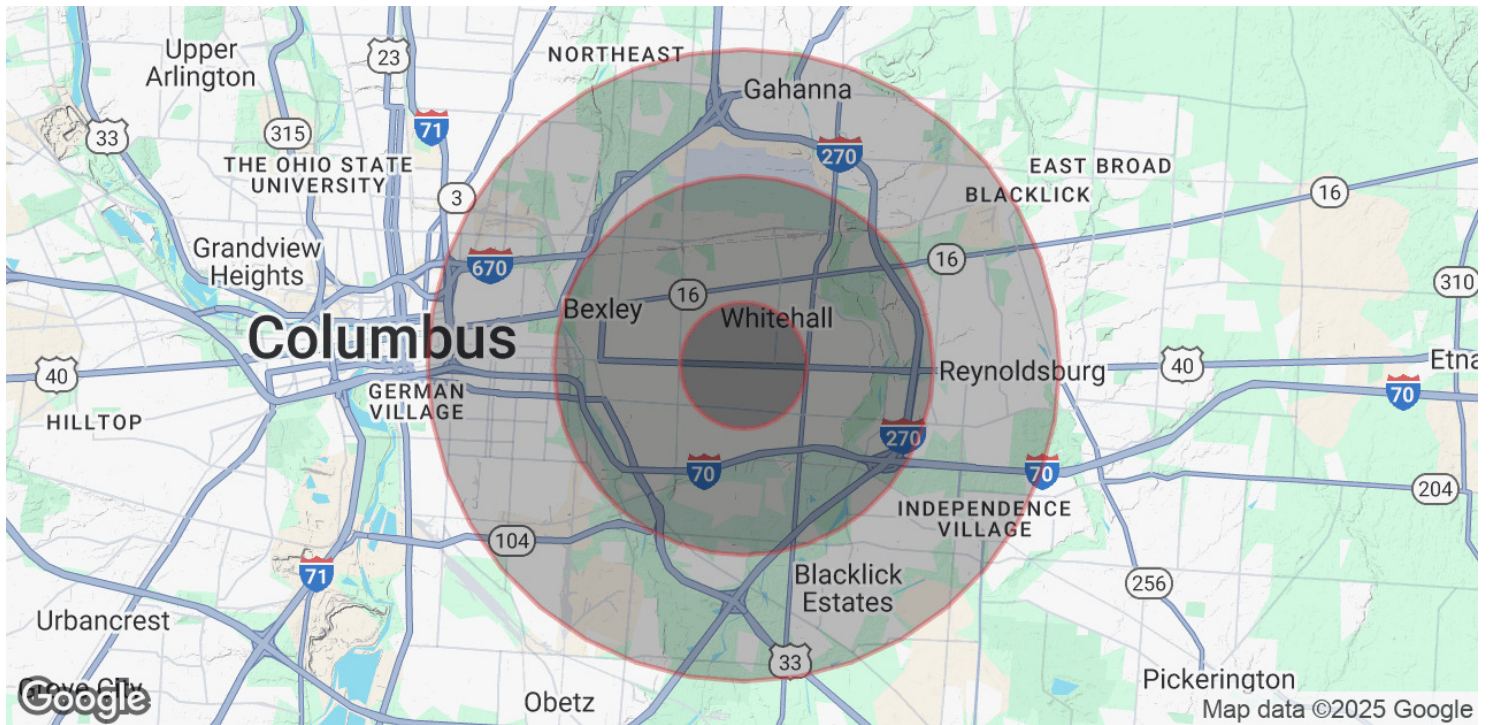
614 629 5282 • rmcgreevy@ohioequities.com











#### POPULATION

	1 MILE	3 MILES	5 MILES
Total Population	17,398	109,509	271,397
Average Age	37	38	38
Average Age (Male)	35	37	37
Average Age (Female)	39	40	39

#### HOUSEHOLDS & INCOME

	1 MILE	3 MILES	5 MILES
Total Households	6,700	45,376	112,374
# of Persons per HH	2.6	2.4	2.4
Average HH Income	\$53,831	\$75,642	\$74,946
Average House Value	\$154,771	\$262,910	\$259,682

Demographics data derived from AlphaMap