

# FOR LEASE

±5,540 SF BLDG AVAILABLE

# 718

JACKSON ST

LOS ANGELES, CA 90012



## PROPERTY HIGHLIGHTS



Turnkey Fitness Studio in Arts District



Studio Spaces with Sound System in Place

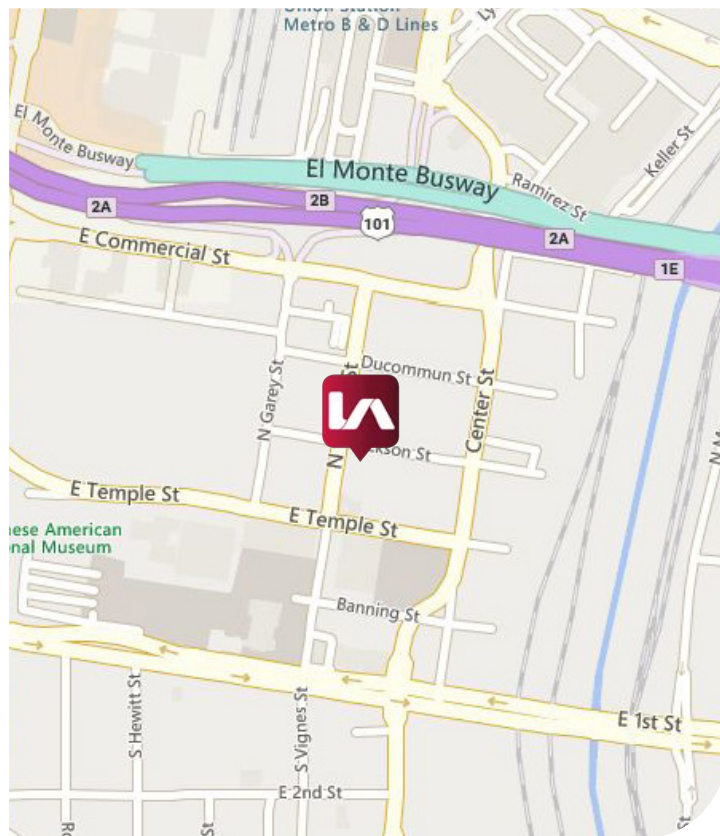


Lockers with Full Showers / Private Restrooms



Former Sanctuary Fitness Next to Boomtown Brewery

**LEASE RATE: \$2,500 / MO**



**SEHYUNG KIM**

Senior Vice President | LIC NO 01327276

skim@lee-associates.com | 213.290.3599

**LEE & ASSOCIATES**  
COMMERCIAL REAL ESTATE SERVICES

All information furnished regarding property for sale, rental or financing is from sources deemed reliable, but no warranty or representation is made to the accuracy thereof and same is submitted to errors, omissions, change of price, rental or other conditions prior to sale, lease or financing or withdrawal without notice. No liability of any kind is to be imposed on the broker herein.



# FOR LEASE - 718 JACKSON ST

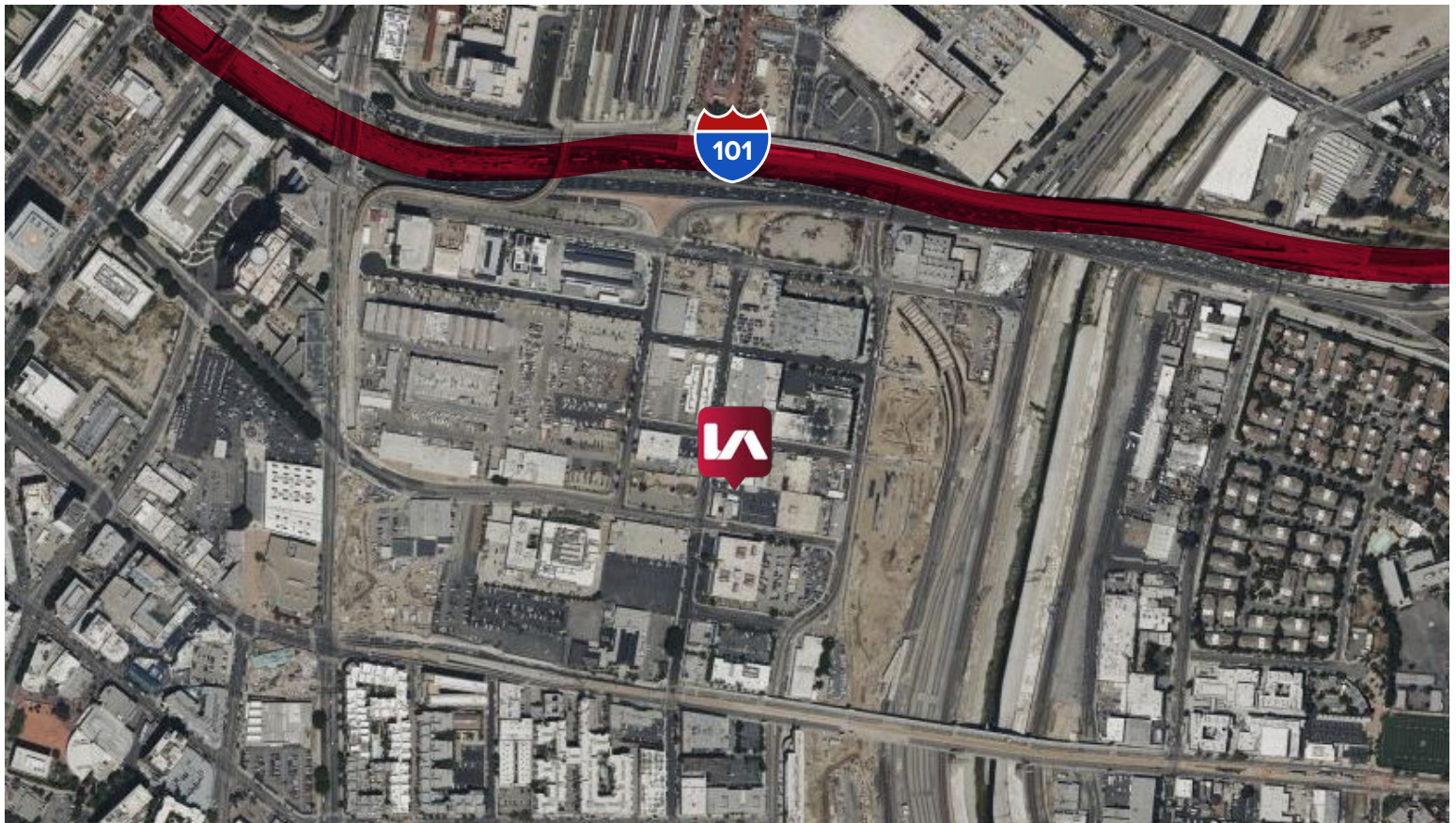
## STREET VIEW



### PROPERTY SUMMARY

<b>UNIT SIZE</b>	±5,450 SF
<b>ZONING</b>	LA-M2
<b>YEAR BUILT</b>	1941
<b>RENOVATED</b>	2018
<b>PARKING SPACES</b>	2 + STREET

## SATELLITE VIDEO



## SEHYUNG KIM

Senior Vice President | LIC NO 01327276

skim@lee-associates.com | 213.290.3599

**LEE & ASSOCIATES**  
COMMERCIAL REAL ESTATE SERVICES

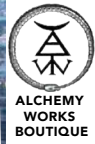
All information furnished regarding property for sale, rental or financing is from sources deemed reliable, but no warranty or representation is made to the accuracy thereof and same is submitted to errors, omissions, change of price, rental or other conditions prior to sale, lease or financing or withdrawal without notice. No liability of any kind is to be imposed on the broker herein.



**FOR LEASE - 718 JACKSON ST**

**AERIAL - SOUTHERLY VIEW**

**ARTS DISTRICT**



HAUSER & WIRTH



太鼓一座  
Los Angeles Taiko Ichiza



MOROCCAN  
LOUNGE

1ST ST

CITY OF LOS ANGELES  
PERSONNEL DEPARTMENT

TEMPLE ST



BOOMTOWN  
BREWERY

N VIGNES ST

JACKSON ST

**SEHYUNG KIM**

Senior Vice President | LIC NO 01327276

skim@lee-associates.com | 213.290.3599

**LEE & ASSOCIATES**  
COMMERCIAL REAL ESTATE SERVICES

All information furnished regarding property for sale, rental or financing is from sources deemed reliable, but no warranty or representation is made to the accuracy thereof and same is submitted to errors, omissions, change of price, rental or other conditions prior to sale, lease or financing or withdrawal without notice. No liability of any kind is to be imposed on the broker herein.

LEE & ASSOCIATES® LOS ANGELES, INC. | 1201 NORTH MAIN ST, LOS ANGELES, CA 90012 | LEE-ASSOCIATES.COM/DOWNTOWNLA





**FOR LEASE - 718 JACKSON ST**

**AERIAL - SOUTHWESTERLY VIEW**



**SEHYUNG KIM**

Senior Vice President | LIC NO 01327276

skim@lee-associates.com | 213.290.3599

**LEE & ASSOCIATES**  
COMMERCIAL REAL ESTATE SERVICES

All information furnished regarding property for sale, rental or financing is from sources deemed reliable, but no warranty or representation is made to the accuracy thereof and same is submitted to errors, omissions, change of price, rental or other conditions prior to sale, lease or financing or withdrawal without notice. No liability of any kind is to be imposed on the broker herein.

LEE & ASSOCIATES® LOS ANGELES, INC. | 1201 NORTH MAIN ST, LOS ANGELES, CA 90012 | LEE-ASSOCIATES.COM/DOWNTOWNLA





**FOR LEASE - 718 JACKSON ST**

**AERIAL - NORTHERLY VIEW**



**SEHYUNG KIM**

Senior Vice President | LIC NO 01327276

skim@lee-associates.com | 213.290.3599

**LEE & ASSOCIATES**  
COMMERCIAL REAL ESTATE SERVICES

All information furnished regarding property for sale, rental or financing is from sources deemed reliable, but no warranty or representation is made to the accuracy thereof and same is submitted to errors, omissions, change of price, rental or other conditions prior to sale, lease or financing or withdrawal without notice. No liability of any kind is to be imposed on the broker herein.

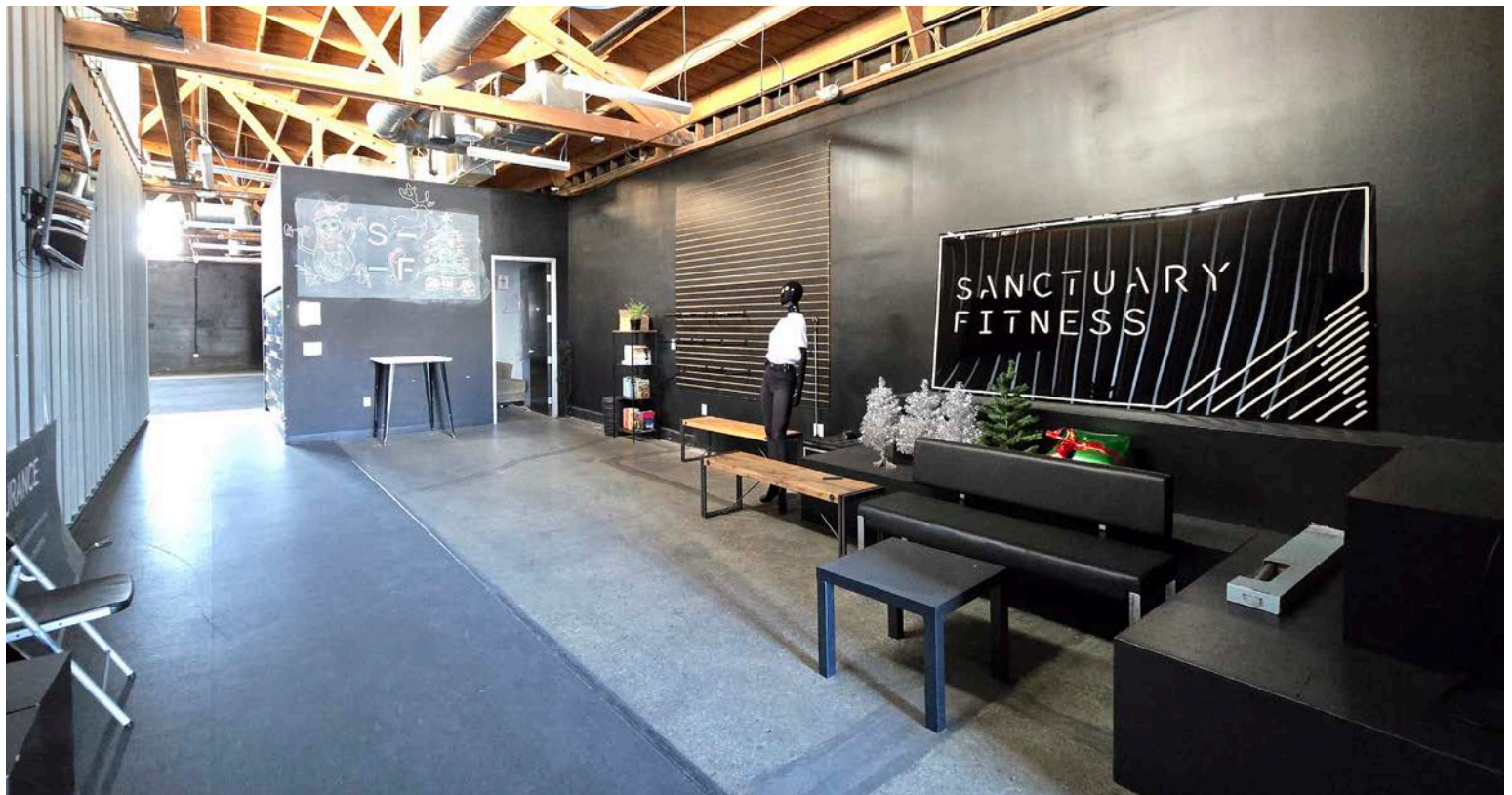
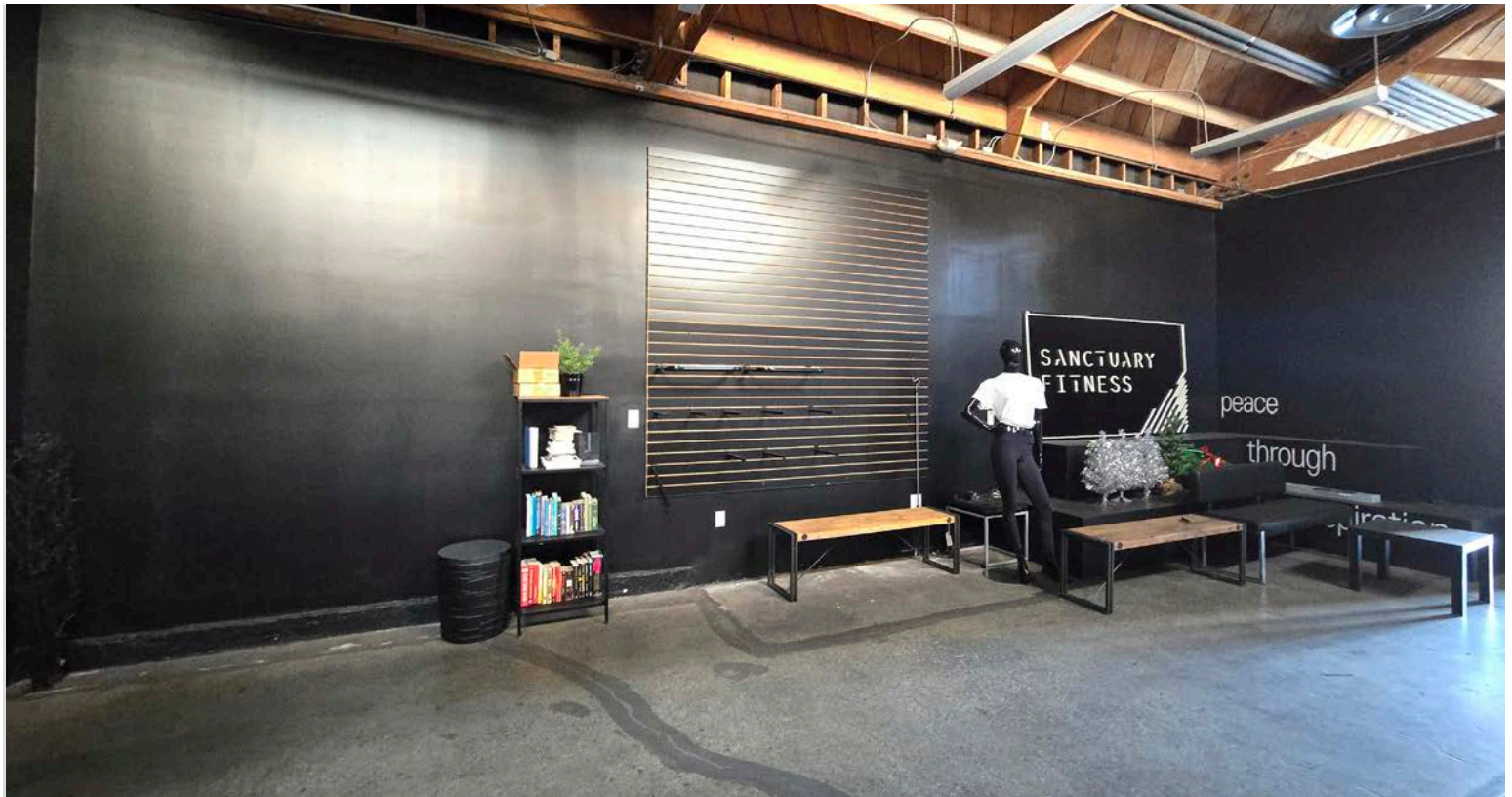
LEE & ASSOCIATES® LOS ANGELES, INC. | 1201 NORTH MAIN ST, LOS ANGELES, CA 90012 | LEE-ASSOCIATES.COM/DOWNTOWNLA





**FOR LEASE - 718 JACKSON ST**

**INTERIOR - LOBBY**



**SEHYUNG KIM**

Senior Vice President | LIC NO 01327276

skim@lee-associates.com | 213.290.3599

**LEE & ASSOCIATES**  
COMMERCIAL REAL ESTATE SERVICES

All information furnished regarding property for sale, rental or financing is from sources deemed reliable, but no warranty or representation is made to the accuracy thereof and same is submitted to errors, omissions, change of price, rental or other conditions prior to sale, lease or financing or withdrawal without notice. No liability of any kind is to be imposed on the broker herein.

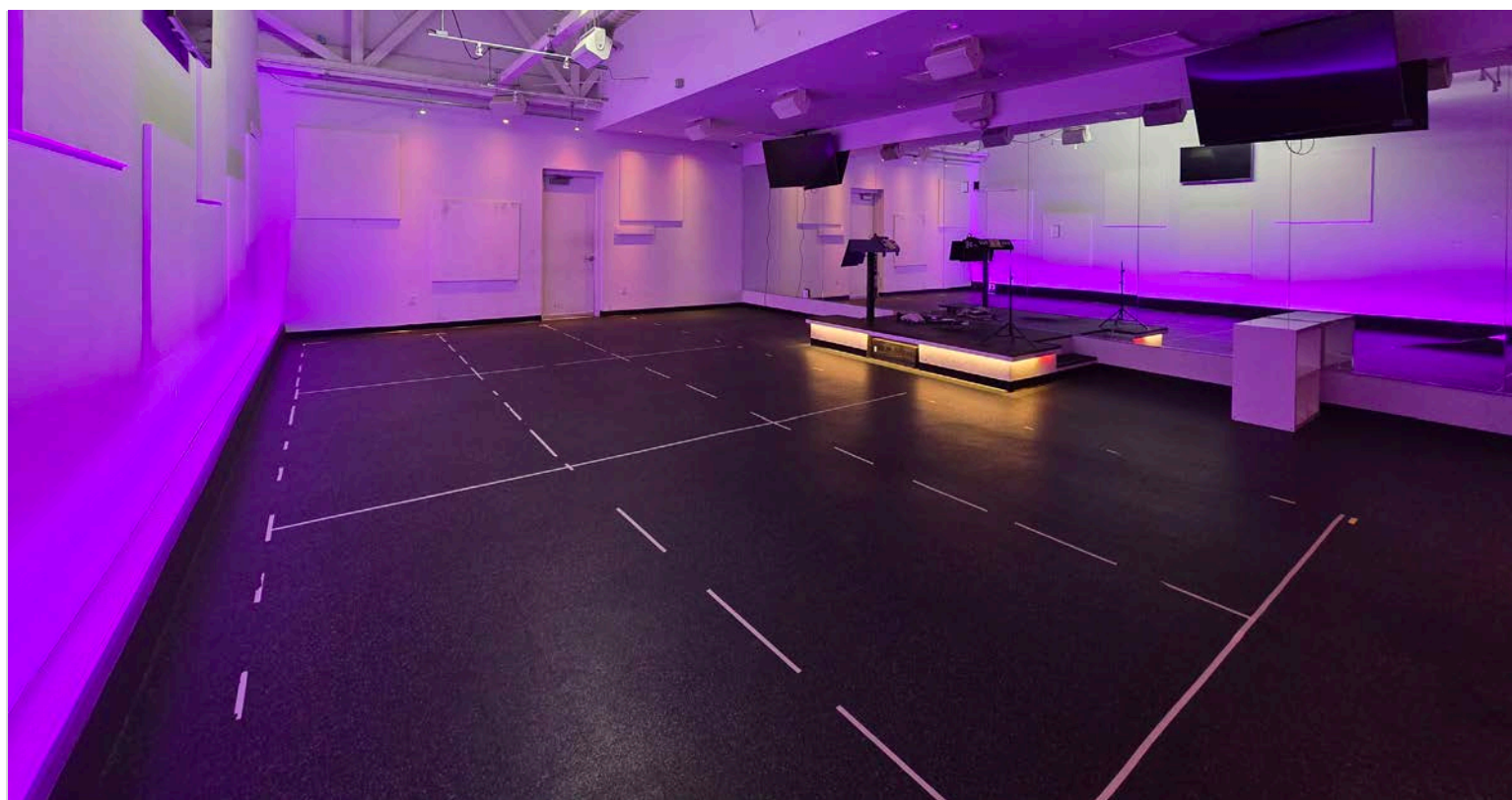
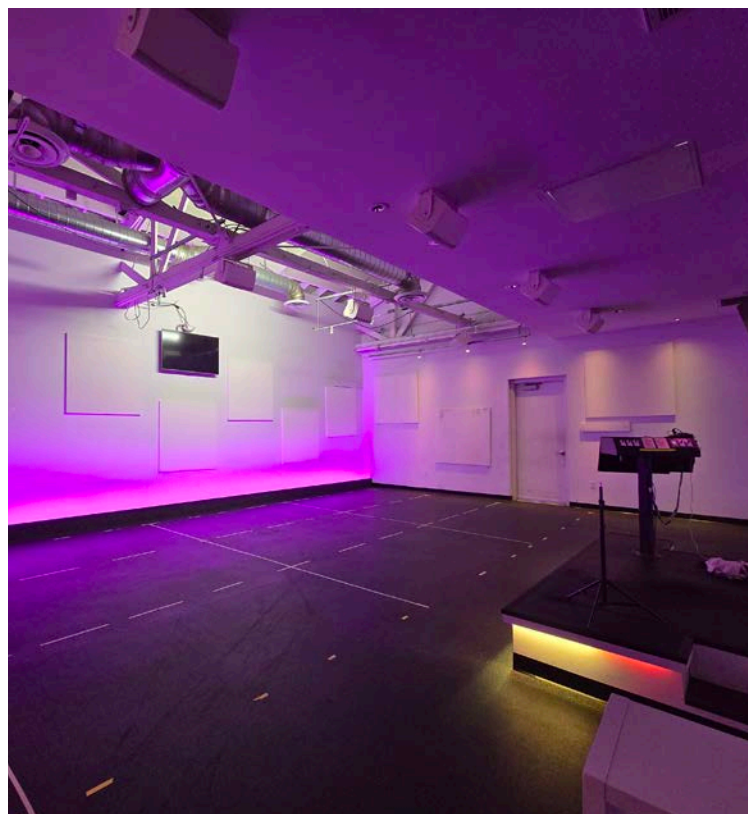
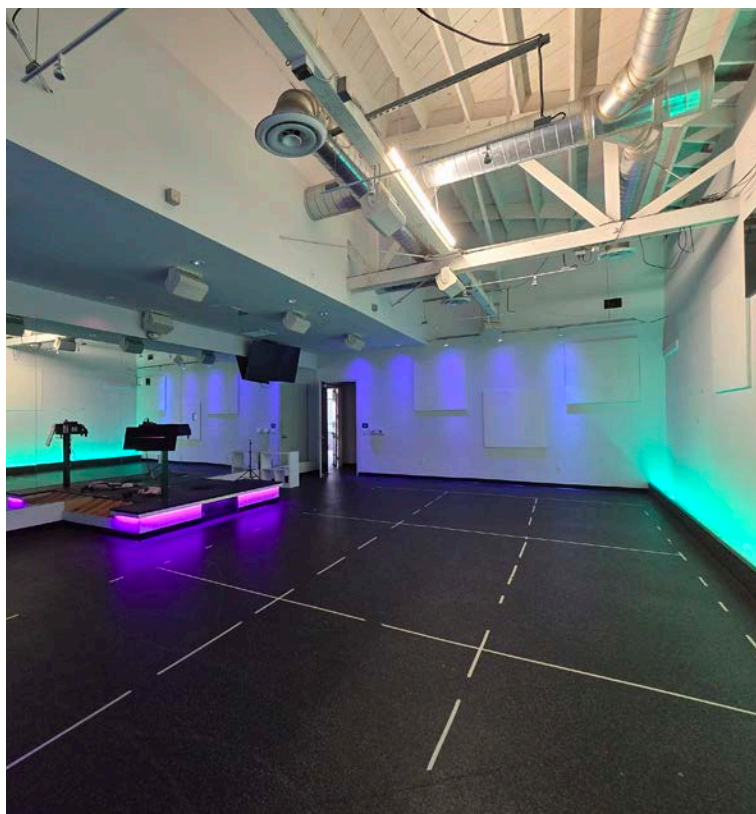
LEE & ASSOCIATES® LOS ANGELES, INC. | 1201 NORTH MAIN ST, LOS ANGELES, CA 90012 | LEE-ASSOCIATES.COM/DOWNTOWNLA





**FOR LEASE - 718 JACKSON ST**

**INTERIOR - MULTIMEDIA STUDIO**



**SEHYUNG KIM**

Senior Vice President | LIC NO 01327276

skim@lee-associates.com | 213.290.3599

**LEE & ASSOCIATES**  
COMMERCIAL REAL ESTATE SERVICES

All information furnished regarding property for sale, rental or financing is from sources deemed reliable, but no warranty or representation is made to the accuracy thereof and same is submitted to errors, omissions, change of price, rental or other conditions prior to sale, lease or financing or withdrawal without notice. No liability of any kind is to be imposed on the broker herein.

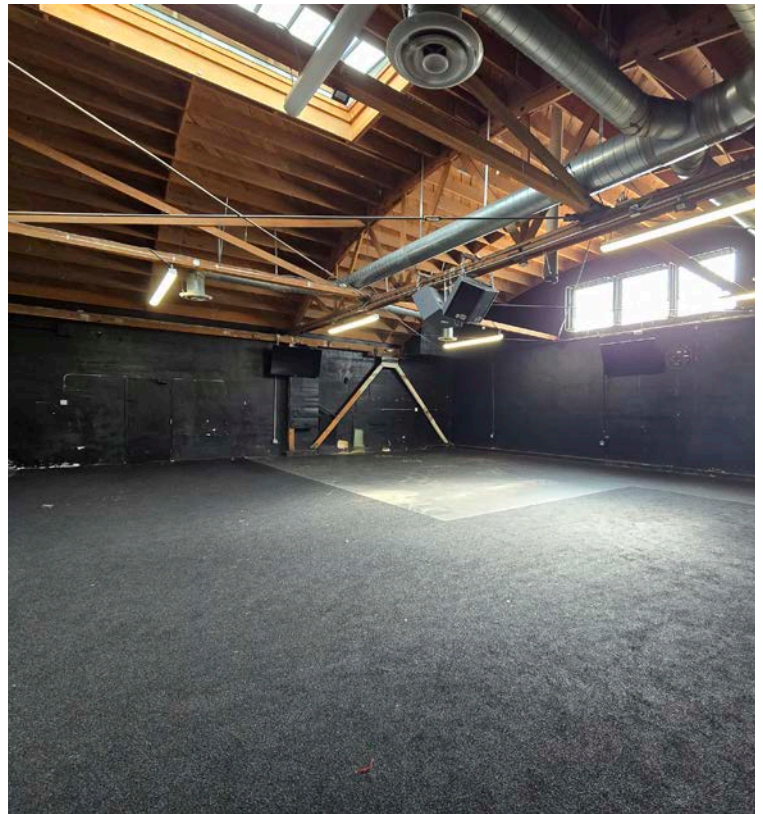
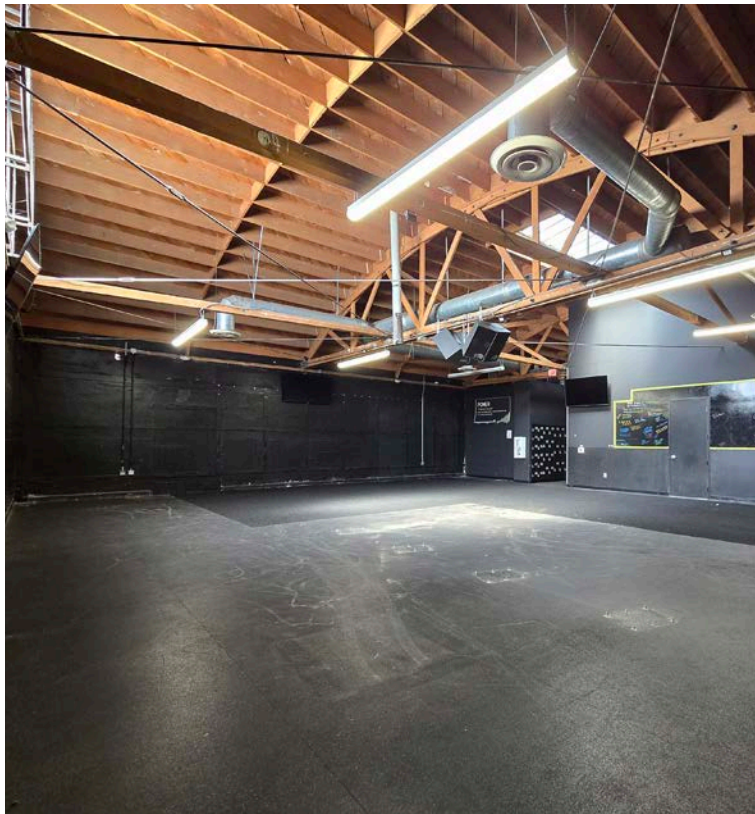
LEE & ASSOCIATES® LOS ANGELES, INC. | 1201 NORTH MAIN ST, LOS ANGELES, CA 90012 | LEE-ASSOCIATES.COM/DOWNTOWNLA





**FOR LEASE - 718 JACKSON ST**

**INTERIOR - MAIN STUDIO**



**SEHYUNG KIM**

Senior Vice President | LIC NO 01327276

skim@lee-associates.com | 213.290.3599

**LEE & ASSOCIATES**  
COMMERCIAL REAL ESTATE SERVICES

All information furnished regarding property for sale, rental or financing is from sources deemed reliable, but no warranty or representation is made to the accuracy thereof and same is submitted to errors, omissions, change of price, rental or other conditions prior to sale, lease or financing or withdrawal without notice. No liability of any kind is to be imposed on the broker herein.

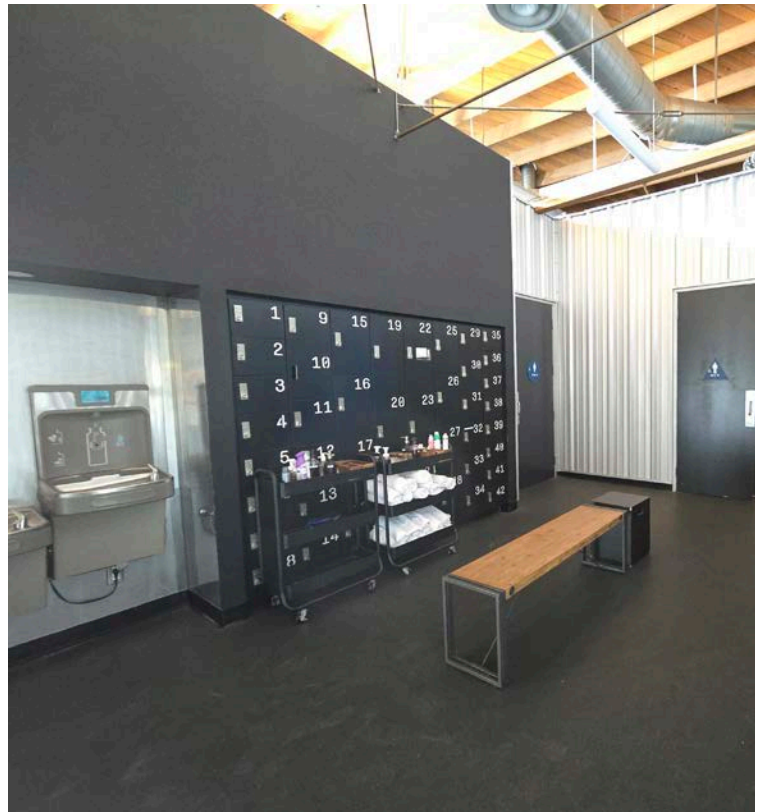
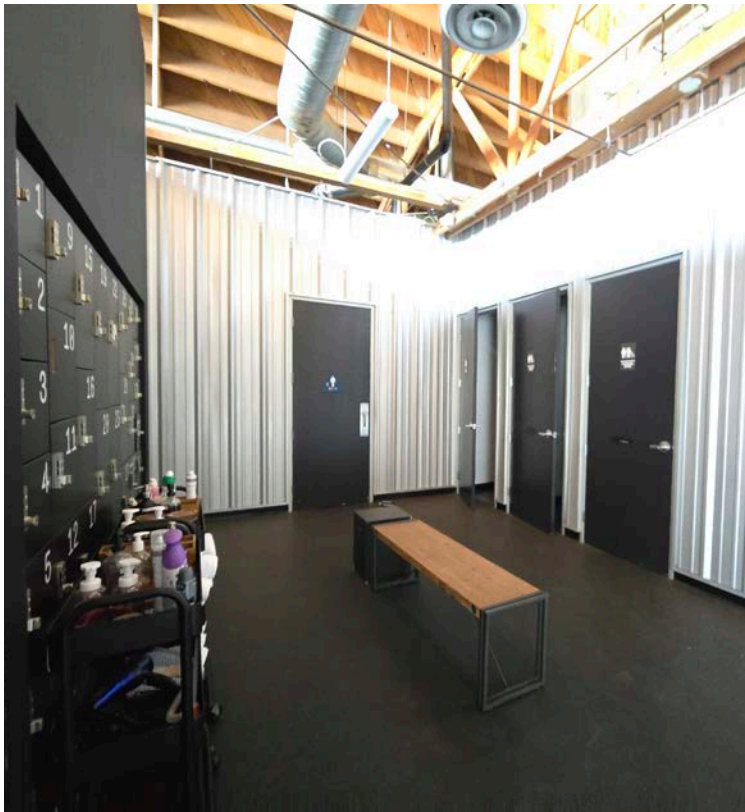
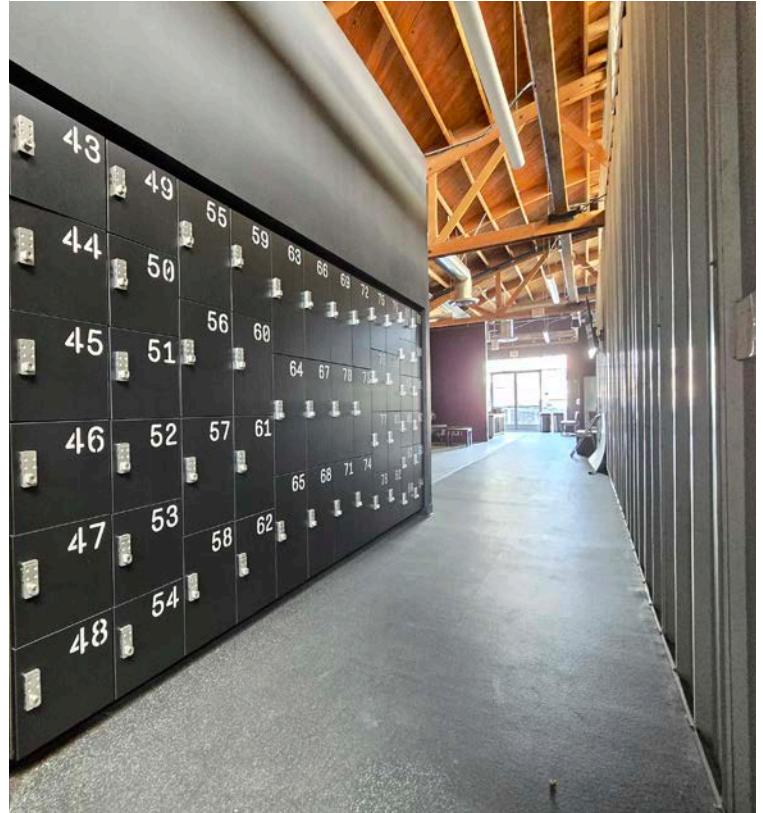
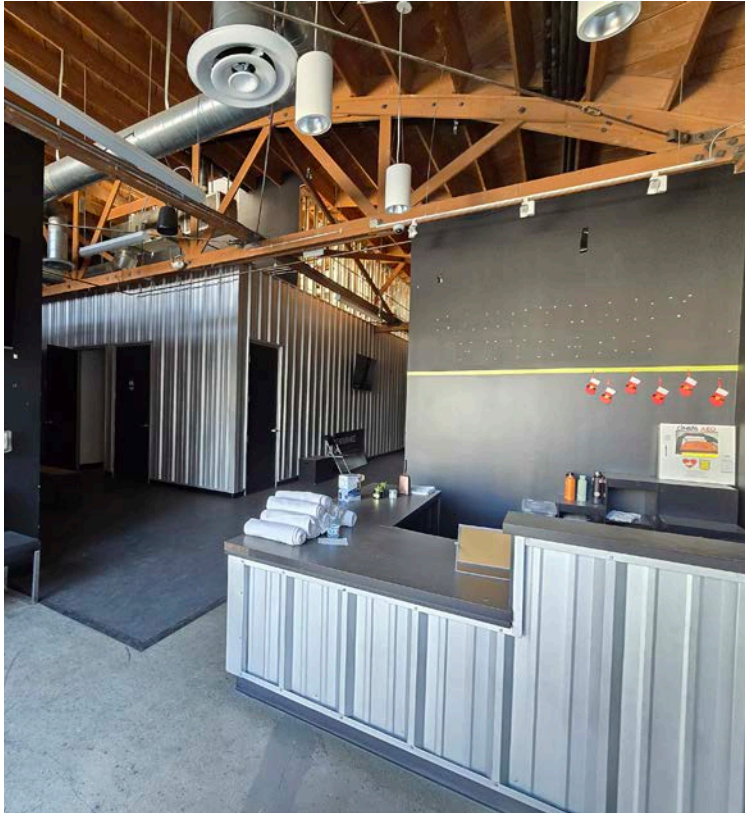
LEE & ASSOCIATES® LOS ANGELES, INC. | 1201 NORTH MAIN ST, LOS ANGELES, CA 90012 | LEE-ASSOCIATES.COM/DOWNTOWNLA





# FOR LEASE - 718 JACKSON ST

## INTERIOR - LOCKER ROOM



**SEHYUNG KIM**

Senior Vice President | LIC NO 01327276

skim@lee-associates.com | 213.290.3599

**LEE & ASSOCIATES**  
COMMERCIAL REAL ESTATE SERVICES

All information furnished regarding property for sale, rental or financing is from sources deemed reliable, but no warranty or representation is made to the accuracy thereof and same is submitted to errors, omissions, change of price, rental or other conditions prior to sale, lease or financing or withdrawal without notice. No liability of any kind is to be imposed on the broker herein.

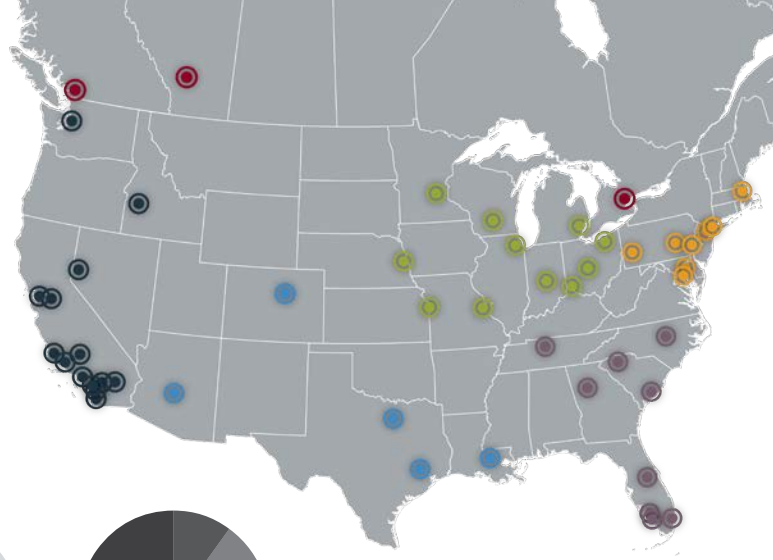
LEE & ASSOCIATES® LOS ANGELES, INC. | 1201 NORTH MAIN ST, LOS ANGELES, CA 90012 | LEE-ASSOCIATES.COM/DOWNTOWNLA







LOCAL EXPERTISE. INTERNATIONAL REACH. WORLD CLASS.



## ABOUT US

Since 1979, Lee & Associates has reimagined the way that commercial real estate companies should be structured. Each Lee & Associates office is owned and operated by its professionals. As shareholders of the company, this separates us from our competition and creates one common goal; to provide seamless, consistent execution and value-driven market-to-market services to our clients.

Every Lee & Associates office delivers world-class service to an array of regional, national, and international clients - from small businesses and local investors to major corporate users and institutional investors.



## NATIONWIDE PRESENCE

California  
Idaho  
Nevada  
Washington  
Arizona  
Colorado  
Louisiana  
Texas

Indiana  
Illinois  
Kansas  
Ohio  
Michigan  
Minnesota  
Missouri  
Nebraska

District Columbia (DC)  
Massachusetts  
Maryland  
New York  
New Jersey  
Pennsylvania  
Florida  
Georgia

Tennessee  
North Carolina  
South Carolina  
Canada: Alberta  
British Columbia  
Ontario

### SEHYUNG KIM

Senior Vice President | LIC NO 01327276

skim@lee-associates.com | 213.290.3599



All information furnished regarding property for sale, rental or financing is from sources deemed reliable, but no warranty or representation is made to the accuracy thereof and same is submitted to errors, omissions, change of price, rental or other conditions prior to sale, lease or financing or withdrawal without notice. No liability of any kind is to be imposed on the broker herein.



# FOR LEASE - 718 JACKSON ST

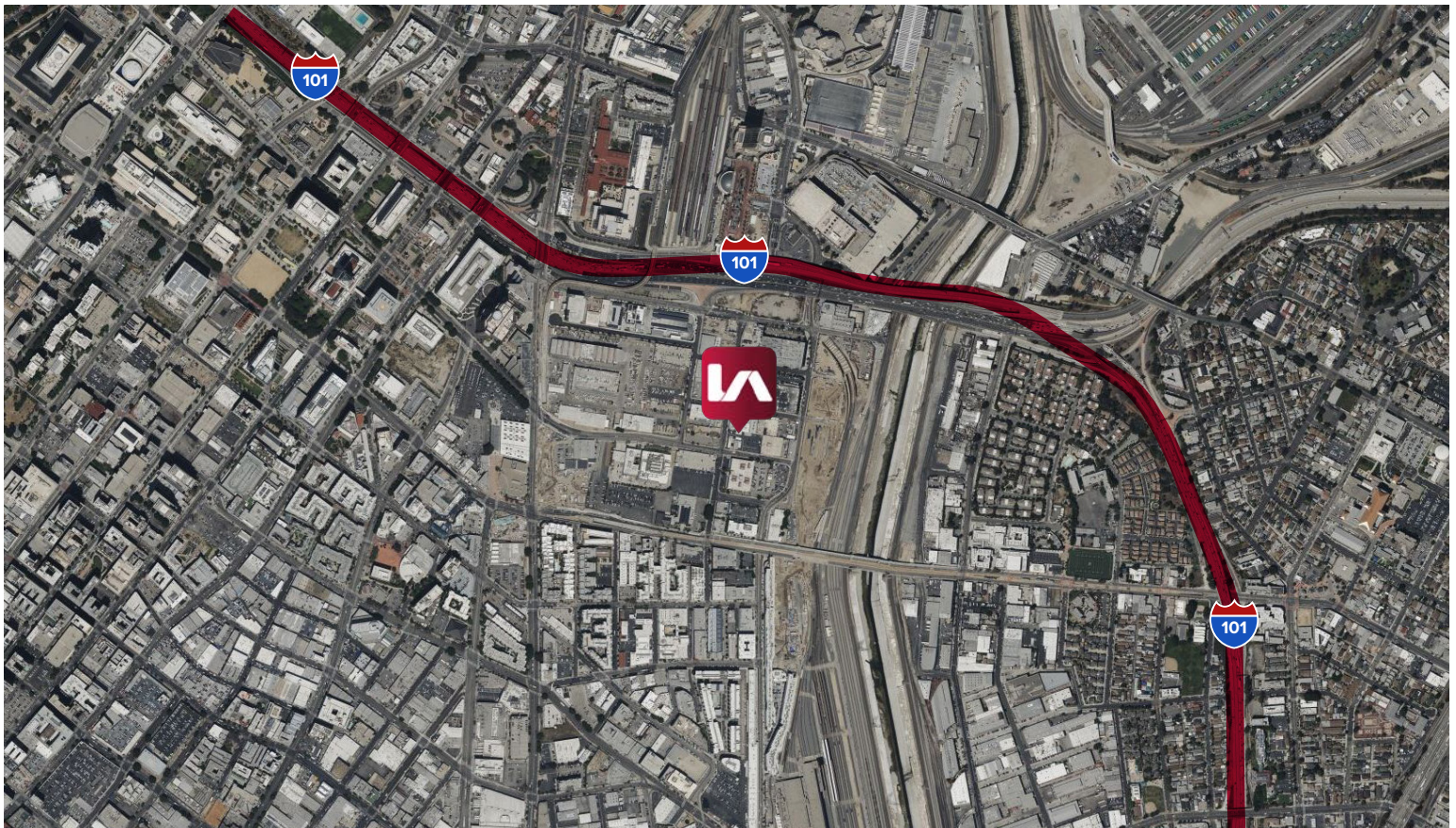
## STREET VIEW



## PROPERTY SUMMARY

<b>UNIT SIZE</b>	±5,450 SF
<b>ZONING</b>	LA-M2
<b>YEAR BUILT</b>	1941
<b>RENOVATED</b>	2018
<b>PARKING SPACES</b>	2 + Street
<b>TOURING INSTRUCTIONS</b>	Do not Disturb Tenants. Email Agent at Least 24 Hours in Advance.

## SATELLITE VIDEO



## SEHYUNG KIM

Senior Vice President | LIC NO 01327276

skim@lee-associates.com | 213.290.3599

**LEE & ASSOCIATES**  
COMMERCIAL REAL ESTATE SERVICES

All information furnished regarding property for sale, rental or financing is from sources deemed reliable, but no warranty or representation is made to the accuracy thereof and same is submitted to errors, omissions, change of price, rental or other conditions prior to sale, lease or financing or withdrawal without notice. No liability of any kind is to be imposed on the broker herein.