

**NEW
DEVELOPMENT**

VITA & VITA REALTY CORP.

Andrew S. Vita, Jr.
Andrew@VitaRealty.com

Anthony Vita
Tony@vitarealty.com

T 973-227-5233
F 973-227-5133

County Plaza

Route 10 (Morris County)

Randolph, New Jersey

**Now
Leasing
Phase 3 & 4**



Information obtained from sources deemed reliable. There is no guarantee, warranty or representation made herein and same is submitted subject to errors, omissions, change of price, rental or other conditions, prior sale, lease, financing, or withdrawal without notice.

County Plaza

Route 10 at Dover-Chester Road

Phase 1
Now Open



Phase 2
Now Open



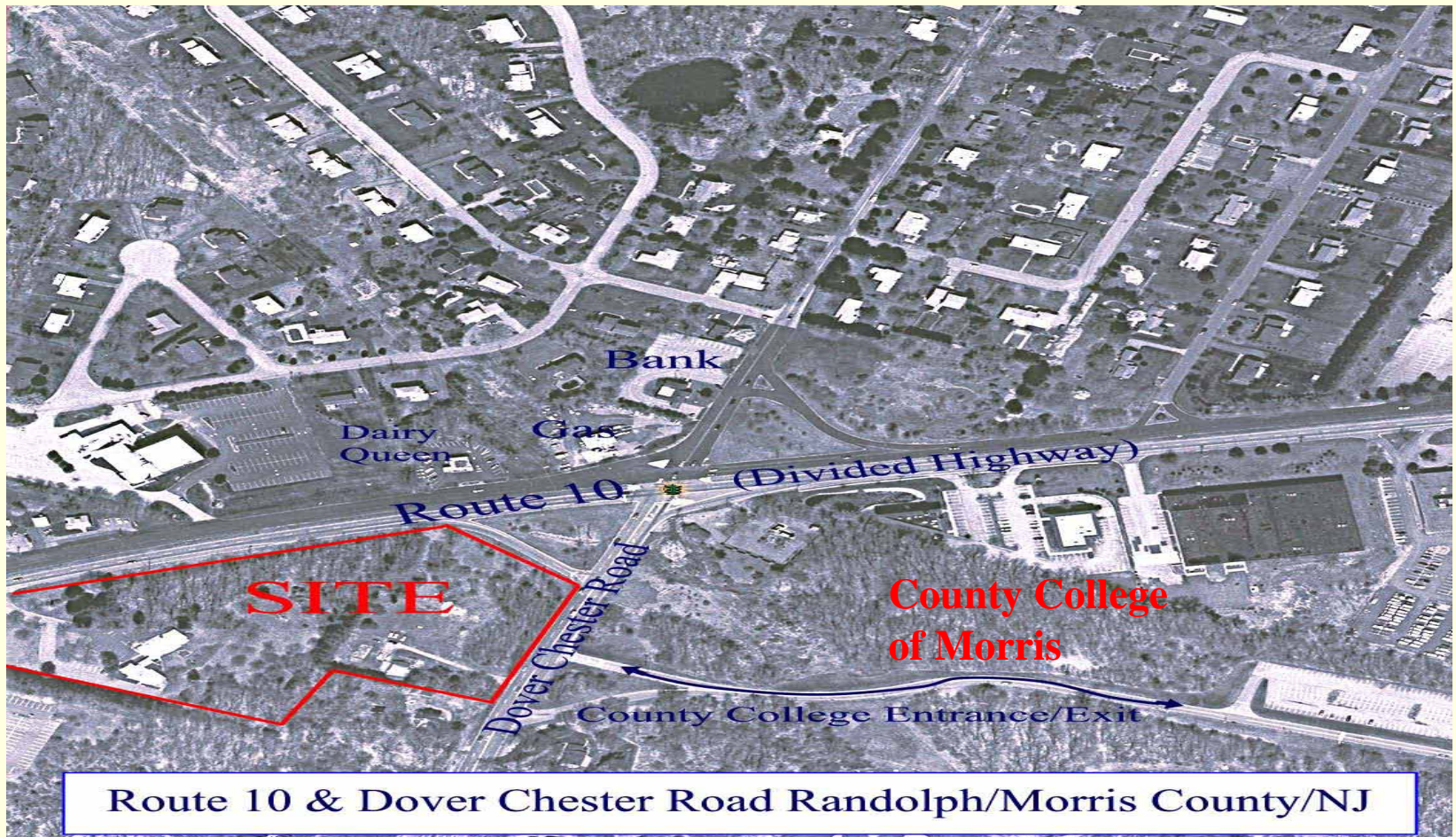
Phase 3
Now Leasing
1,500 – 9,900 Sq. Ft.



Phase 4
Approved Bank Pad
3,680 Sq. Ft. w/ Drive-thru

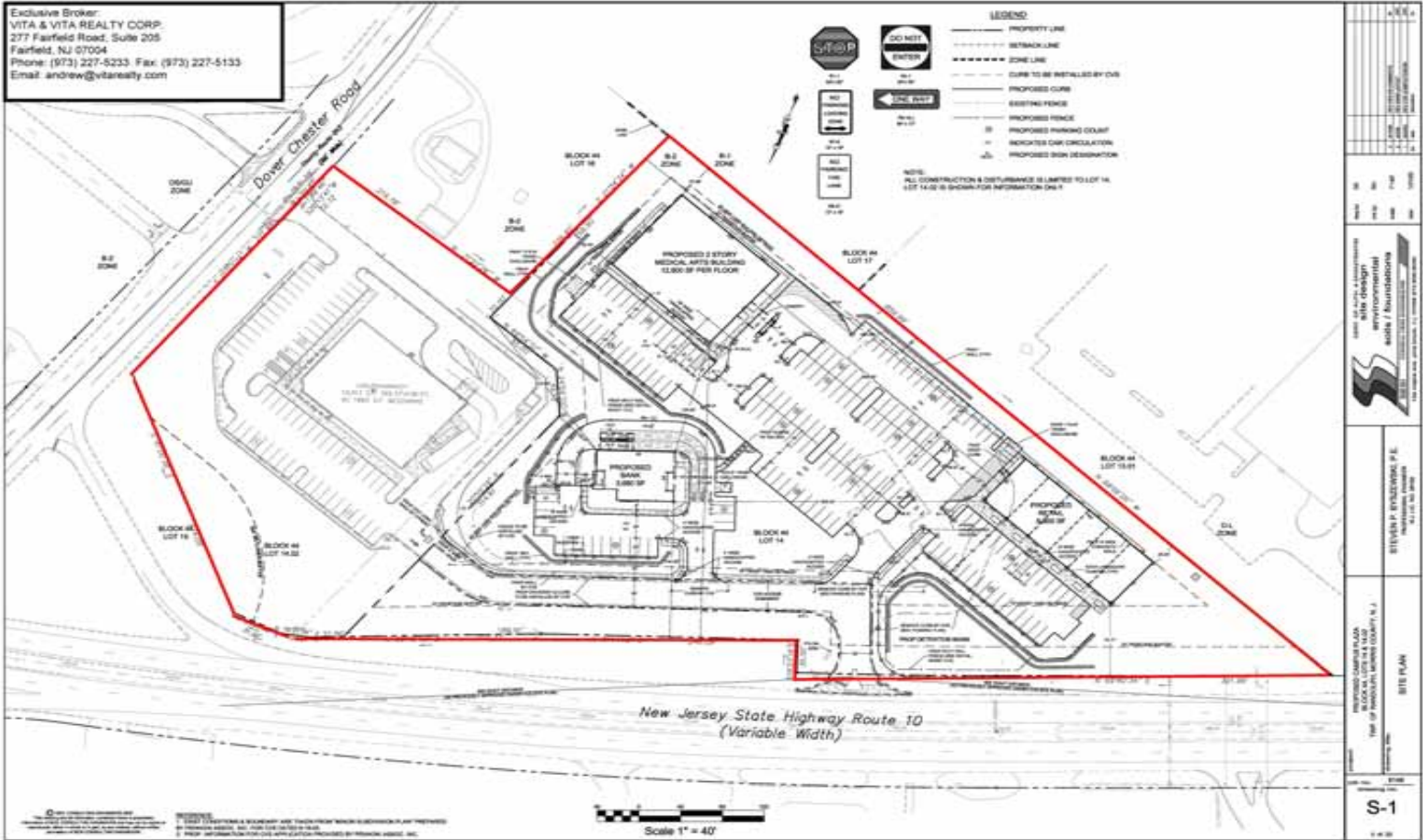


County Plaza Aerial Photo (9 Acres)



County Plaza Site Plan – GLA 51,793 Sq. Ft.

Andrew S. Vita, Jr.
Andrew@VitaRealty.com
Anthony Vita
Tony@VitaRealty.com
T - 973-227-5233
F - 973-227-5133



Information obtained from sources deemed reliable. There is no guarantee, warrantee or representation made herein and same is submitted subject to errors, omissions, change of price, rental or other conditions, prior sale, lease, financing, or withdrawal without notice.

County Plaza

Phase 3 – Retail Shoppes

Andrew S. Vita, Jr.
Andrew@VitaRealty.com
Anthony Vita
Tony@VitaRealty.com
T - 973-227-5233
F - 973-227-5133

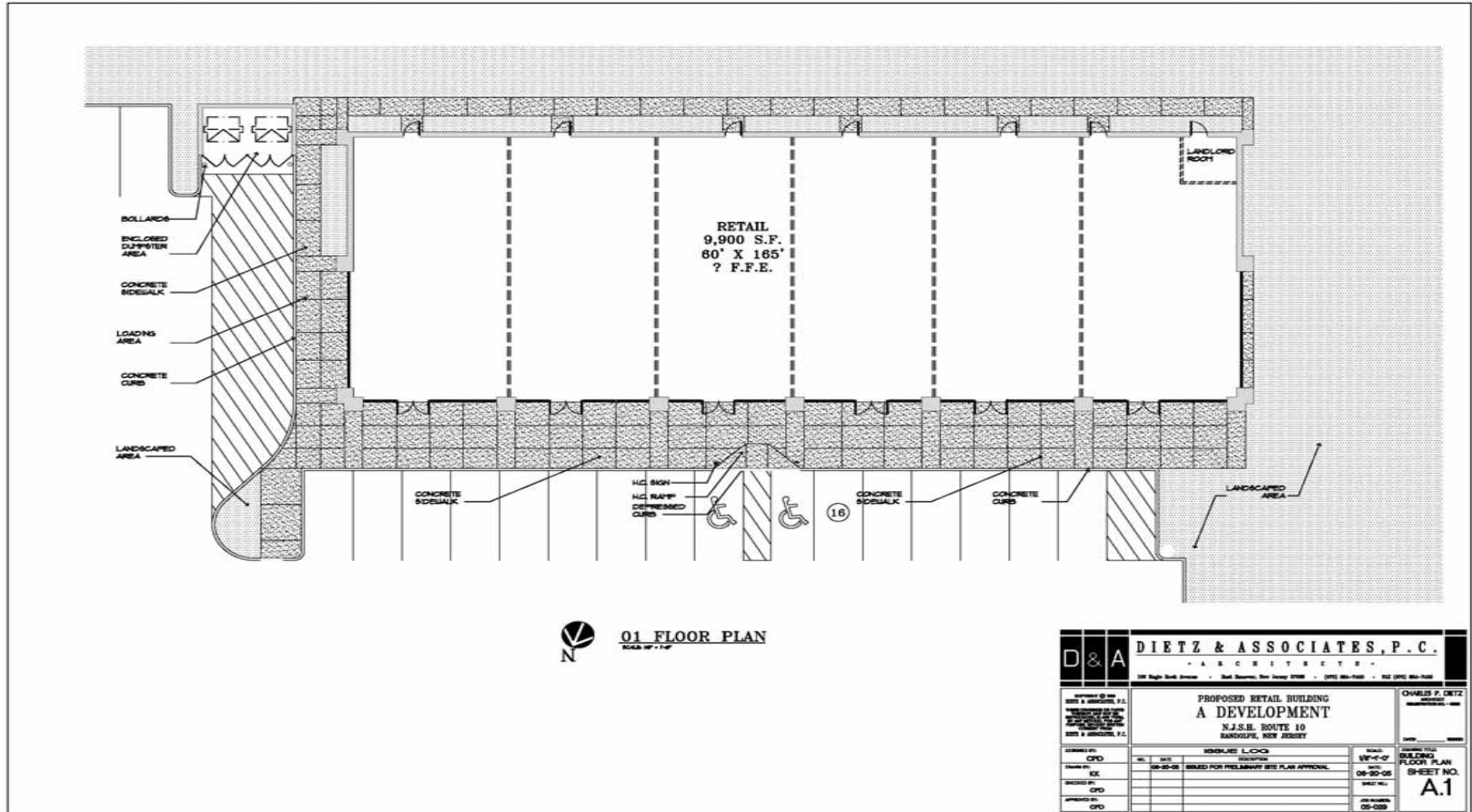


- 9,900 Sq. Ft.
(Divisible to 1,500 Sq. Ft.)
- Route 10 Frontage
- Direct Highway Access
- Excellent Visibility
- Adjacent to County College of Morris
- Population 113,179 (5 Miles)
- Average Household Income \$130,000 (1 Mile)
- Total Project GLA 51,793 Sq. Ft.
- On-Site Parking for 224 cars

County Plaza

Phase 3 - Retail Floor Plan

Andrew S. Vita, Jr.
Andrew@VitaRealty.com
 Anthony Vita
Tony@VitaRealty.com
 T - 973-227-5233
 F - 973-227-5133



County Plaza

Phase 4 – Approved Bank Pad

Andrew S. Vita, Jr.
Andrew@VitaRealty.com

Anthony Vita
Tony@VitaRealty.com

T - 973-227-5233

F - 973-227-5133



- 3,680 Sq. Ft.
- Two Drive-thru Lanes
- Route 10 Frontage
- Excellent Visibility
- Municipal Approvals Secured
- 20 Car Parking
- Adjacent to County College of Morris
- Avg. Household Income \$130,000 (1 Mile)
- Population 113,179 (5 Miles)
- Total Project GLA 51,793 Sq. Ft.

County Plaza Phase 4 – Bank Pad

Andrew S. Vita, Jr.
Andrew@VitaRealty.com
Anthony Vita
Tony@VitaRealty.com
T - 973-227-5233
F - 973-227-5133

