



**For Lease** | Medical Office Suite

**Property Highlights**

**26657 Woodward Ave | Huntington Woods, MI**

- 2,850 SF
- Turnkey Medical Suite
- Large Front Reception with Ample Admin Area
- 8 Exam Rooms
- 2 In-suite Restrooms
- Great Huntington Woods/Woodward Avenue Location



**Miriam Rhein**

248 226 1656

[miriam.rhein@colliers.com](mailto:miriam.rhein@colliers.com)

# PROPERTY PHOTOS

For Lease | Medical Office Suite  
26657 Woodward Ave | Huntington Woods, MI

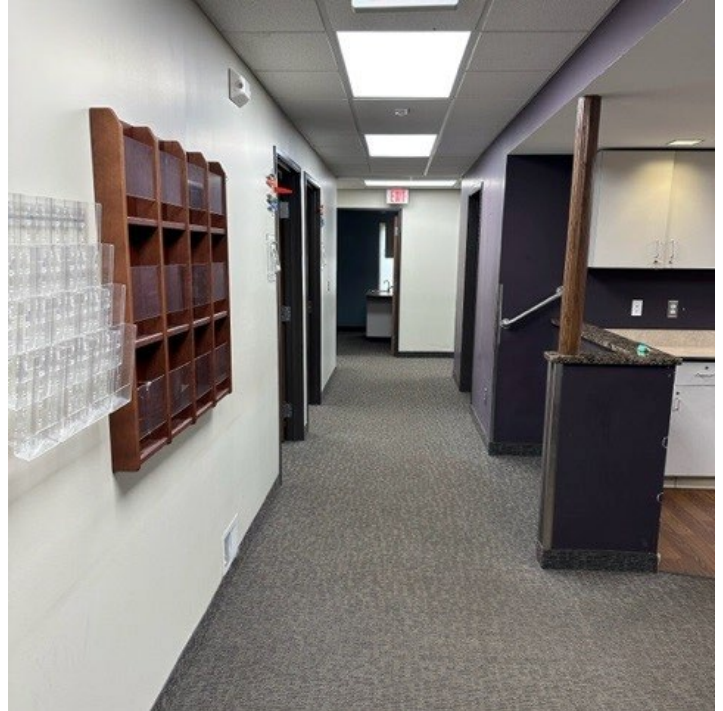


**Miriam Rhein**  
248 226 1656  
miriam.rhein@colliers.com



# PROPERTY PHOTOS

For Lease | Medical Office Suite  
26657 Woodward Ave | Huntington Woods, MI

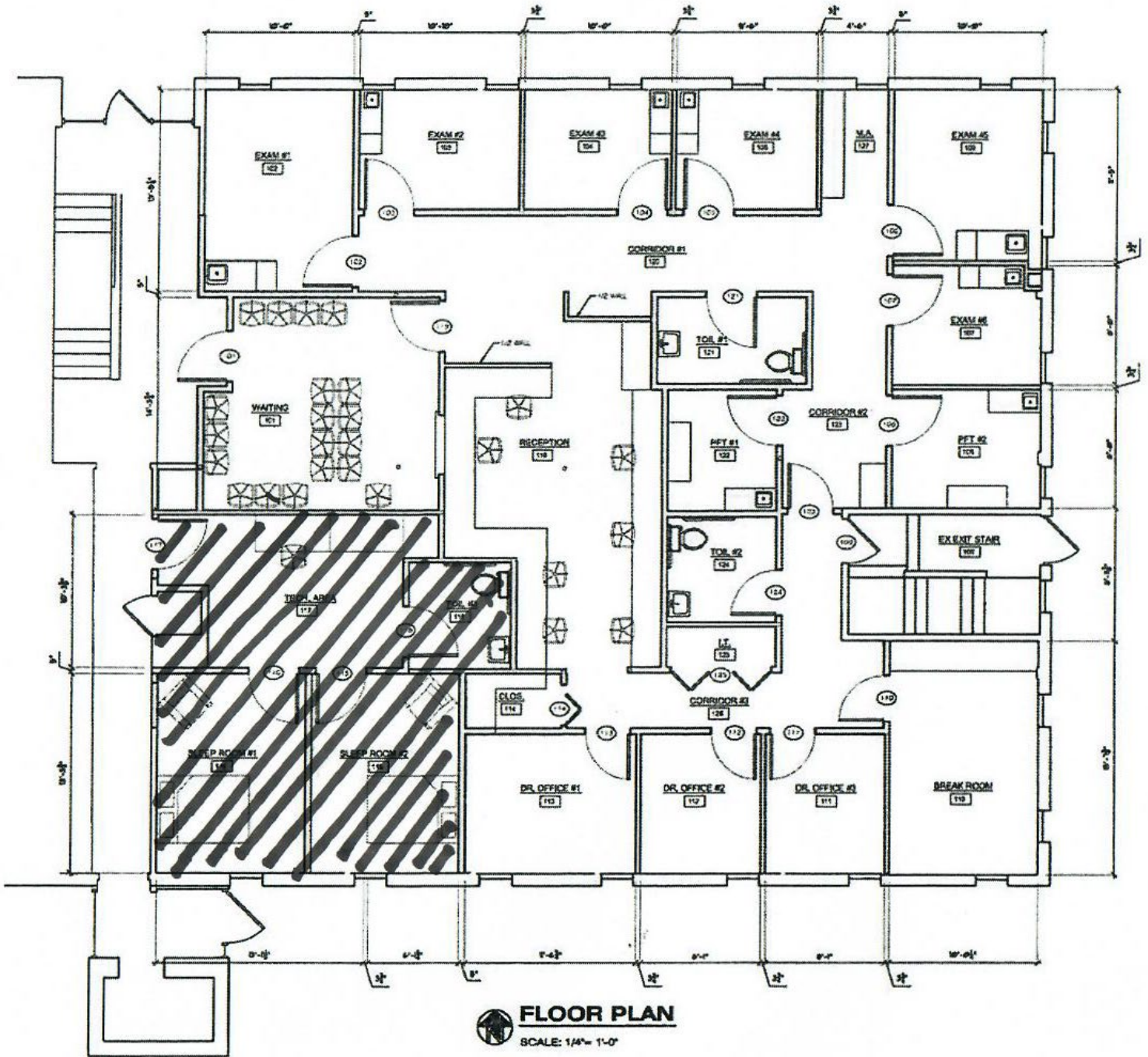


**Miriam Rhein**  
248 226 1656  
miriam.rhein@colliers.com



# FLOOR PLAN

For Lease | Medical Office Suite  
26657 Woodward Ave | Huntington Woods, MI

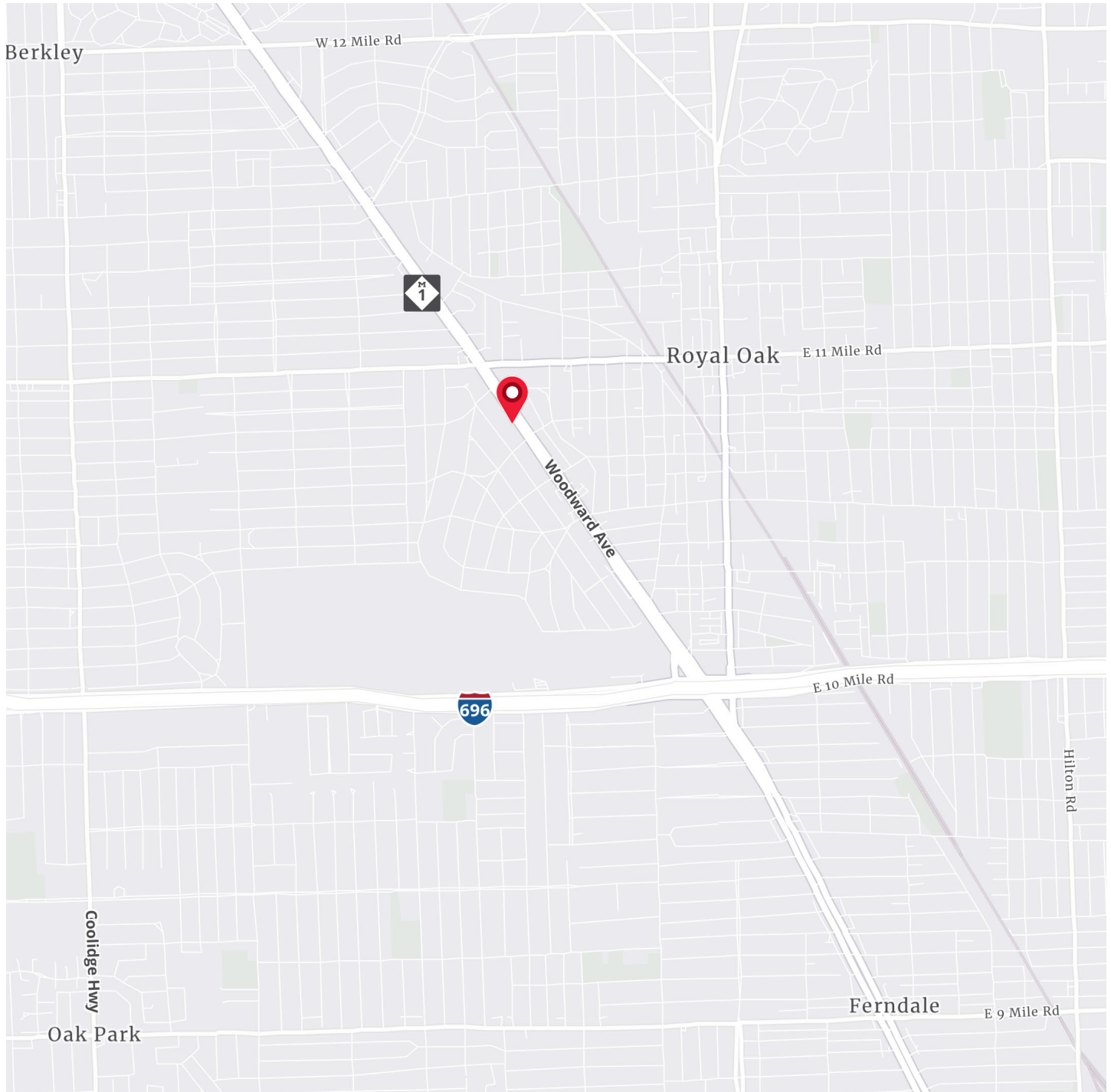


**Miriam Rhein**  
248 226 1656  
miriam.rhein@colliers.com



# LOCATION MAP

For Lease | Medical Office Suite  
26657 Woodward Ave | Huntington Woods, MI



*We have no reason to doubt the accuracy of information contained herein, but we cannot guarantee it. All information should be verified prior to purchase and/or lease.*



**Miriam Rhein**  
248 226 1656  
miriam.rhein@colliers.com



# DEMOGRAPHICS

For Lease | Medical Office Suite  
26657 Woodward Ave | Huntington Woods, MI

Current Year Summary	1 Mile Radius	3 Mile Radius	5 Mile Radius
Total Population			
Total Households			
Total Family Households			
Average Household Size			
Median Age			
Population Age 25+			
2010 – 2021 Population: Annual Growth Rate (CAGR)	%	%	%
2022 – 2023 Population: Annual Growth Rate (CAGR)	%	%	%
Five Year Projected Trends: Annual Rate(CAGR)	1 Mile Radius	3 Mile Radius	5 Mile Radius
Population	%	%	%
Households	%	%	%
Families	%	%	%
Median Household Income	%	%	%
Current Year Population by Sex	1 Mile Radius	3 Mile Radius	5 Mile Radius
Male Population / % Male	/ %	/ %	/ %
Female Population / % Female	/ %	/ %	/ %
Income and Households Summary	1 Mile Radius	3 Mile Radius	5 Mile Radius
2020 Median Household Income	\$	\$	\$
Average Household income	\$	\$	\$
Per Capita Income	\$	\$	\$
Summary Business Data	1 Mile Radius	3 Mile Radius	5 Mile Radius
Total Businesses			
Total Daytime Population			
Daytime Population: Workers			
Daytime Population: Residents			

## Data Notes:

- Household population includes persons not residing in group quarters. Average Household Size is the household population divided by total households. Persons in families include the householder and persons related to the householder by birth, marriage, or adoption.
- Income represents the preceding year, expressed in current dollars. Household income includes wage and salary earnings, interest dividends, net rents, pensions, SSI and welfare payments, child support, and alimony.
- Per Capita Income represents the income received by all persons aged 15 years and over divided by the total population.

*We have no reason to doubt the accuracy of information contained herein, but we cannot guarantee it. All information should be verified prior to purchase and/or lease.*



**Miriam Rhein**  
248 226 1656  
miriam.rhein@colliers.com



# CONSUMER MEDICAL EXPENDITURES | 1 Mile Radius

For Lease | Medical Office Suite

26657 Woodward Ave | Huntington Woods, MI

Demographic Summary		2024	2029
Population		15,668	15,528
Households		7,922	8,082
Families		3,760	3,777
Median Household Income		\$117,661	\$132,045
Males per 100 Females		106.0	104.2
Population <5 Years		5.1%	4.8%
Population 65+ Years		16.5%	18.4%
Median Age		38.4	40.0
Annual Expenditures	Spending Potential Index	Average Household Amount Spent	Total
<b>Health Care</b>	134	\$10,311.12	\$81,684,711
<b>Medical Care</b>	134	\$3,621.42	\$28,688,905
Physician Services	138	\$455.24	\$3,606,435
Dental Services	138	\$692.40	\$5,485,158
Eyecare Services	135	\$126.64	\$1,003,221
Lab Tests, X-Rays	136	\$118.10	\$935,624
Hospital Room and Hospital Services	135	\$381.08	\$3,018,943
Convalescent or Nursing Home Care	136	\$60.14	\$476,434
Other Medical services (1)	244	\$292.71	\$2,318,835
Nonprescription Drugs	133	\$236.25	\$1,871,553
Prescription Drugs	129	\$532.20	\$4,216,128
Nonprescription Vitamins	129	\$207.94	\$1,647,299
Medicare Prescription Drug Premium	119	\$157.05	\$1,244,153
Eyeglasses and Contact Lenses	141	\$178.26	\$1,412,185
Hearing Aids	122	\$43.05	\$341,021
Medical Equipment for General Use	132	\$13.13	\$103,999
Other Medical Supplies/Equipment (2)	176	\$127.23	\$1,007,917
<b>Health Insurance</b>	134	\$6,689.70	\$52,995,806
Blue Cross/Blue Shield	134	\$1,812.64	\$14,359,703
Fee for Service Health Plan	144	\$1,416.21	\$11,219,231
HMO	146	\$1,099.61	\$8,711,111
Medicare Payments	122	\$1,385.01	\$10,972,018
Long Term Care Insurance	133	\$89.83	\$711,604
Dental Care Insurance	143	\$258.43	\$2,047,265
Vision Care Insurance	140	\$62.24	\$493,043
Prescription Drug Insurance	121	\$9.18	\$72,745
Other Single Service Insurance (3)	131	\$20.29	\$160,724
Medicaid Premiums	152	\$17.24	\$136,576
Tricare/Military Premiums	123	\$14.29	\$113,224
Children's Health Ins Program Premiums	175	\$1.78	\$14,099

**Data Note:** The Spending Potential Index (SPI) is household-based, and represents the amount spent for a product or service relative to a national average of 100. Detail may not sum to totals due to rounding. **(1) Other Medical Services** includes Services by Medical Professionals other than Physicians, Outpatient Hospital Care, Blood Donation, and Ambulance, Dialysis, Emergency Room, Oxygen or Rescue Services. **(2) Other Medical Supplies/Equipment** includes Topicals, Dressings, Supportive and Convalescent Medical Equipment, Rental of Medical Equipment for General Use, and Rental of Supportive and Convalescent Medical Equipment. **(3) Other Single Service Insurance** Other Single Service Insurance includes health insurance coverage that provides for only one type of service, other than dental care, vision care, prescriptions, and long-term care. **Source:** Esri current year and 5 year forecasts; Consumer Spending data are derived from the Consumer Expenditure Surveys, Bureau of Labor Statistics.



We have no reason to doubt the accuracy of information contained herein, but we cannot guarantee it. All information should be verified prior to purchase and/or lease.

# CONSUMER MEDICAL EXPENDITURES | 3 Mile Radius

For Lease | Medical Office Suite  
26657 Woodward Ave | Huntington Woods, MI

Demographic Summary		2024	2029
Population		144,225	142,501
Households		68,507	69,517
Families		34,223	34,258
Median Household Income		\$88,089	\$101,281
Males per 100 Females		99.5	98.0
<b>Population By Age</b>			
Population <5 Years		5.3%	5.0%
Population 65+ Years		16.8%	19.0%
Median Age		38.2	40.3
Annual Expenditures	Spending Potential Index	Average Household Amount Spent	Total
<b>Health Care</b>	103	\$7,938.88	\$543,868,912
<b>Medical Care</b>	103	\$2,782.67	\$190,632,516
Physician Services	106	\$349.36	\$23,933,333
Dental Services	100	\$500.89	\$34,314,331
Eyecare Services	102	\$95.94	\$6,572,699
Lab Tests, X-Rays	105	\$91.43	\$6,263,310
Hospital Room and Hospital Services	106	\$297.94	\$20,410,893
Convalescent or Nursing Home Care	93	\$41.27	\$2,827,137
Other Medical services (1)	176	\$211.56	\$14,493,597
Nonprescription Drugs	105	\$185.76	\$12,726,115
Prescription Drugs	110	\$454.85	\$31,160,550
Nonprescription Vitamins	91	\$147.25	\$10,087,823
Medicare Prescription Drug Premium	100	\$132.12	\$9,050,817
Eyeglasses and Contact Lenses	104	\$132.07	\$9,047,854
Hearing Aids	97	\$34.45	\$2,359,781
Medical Equipment for General Use	104	\$10.34	\$708,441
Other Medical Supplies/Equipment (2)	135	\$97.45	\$6,675,834
<b>Health Insurance</b>	103	\$5,156.21	\$353,236,395
Blue Cross/Blue Shield	104	\$1,411.45	\$96,694,186
Fee for Service Health Plan	108	\$1,069.35	\$73,257,789
HMO	99	\$745.23	\$51,053,334
Medicare Payments	101	\$1,151.24	\$78,868,040
Long Term Care Insurance	105	\$71.39	\$4,890,733
Dental Care Insurance	107	\$192.55	\$13,191,293
Vision Care Insurance	110	\$48.74	\$3,339,162
Prescription Drug Insurance	109	\$8.23	\$563,561
Other Single Service Insurance (3)	98	\$15.25	\$1,044,873
Medicaid Premiums	107	\$12.15	\$832,146
Tricare/Military Premiums	95	\$11.10	\$760,121
Children's Health Ins Program Premiums	126	\$1.29	\$88,321

**Data Note:** The Spending Potential Index (SPI) is household-based, and represents the amount spent for a product or service relative to a national average of 100. Detail may not sum to totals due to rounding. **(1) Other Medical Services** includes Services by Medical Professionals other than Physicians, Outpatient Hospital Care, Blood Donation, and Ambulance, Dialysis, Emergency Room, Oxygen or Rescue Services. **(2) Other Medical Supplies/Equipment** includes Topicals, Dressings, Supportive and Convalescent Medical Equipment, Rental of Medical Equipment for General Use, and Rental of Supportive and Convalescent Medical Equipment. **(3) Other Single Service Insurance** Other Single Service Insurance includes health insurance coverage that provides for only one type of service, other than dental care, vision care, prescriptions, and long-term care. **Source:** Esri current year and 5 year forecasts; Consumer Spending data are derived from the Consumer Expenditure Surveys, Bureau of Labor Statistics.



We have no reason to doubt the accuracy of information contained herein, but we cannot guarantee it. All information should be verified prior to purchase and/or lease.



# CONSUMER MEDICAL EXPENDITURES | 5 Mile Radius

For Lease | Medical Office Suite

26657 Woodward Ave | Huntington Woods, MI

Demographic Summary		2024	2029
Population		354,820	353,120
Households		161,367	165,182
Families		85,266	85,996
Median Household Income		\$75,930	\$87,195
Males per 100 Females		96.0	95.0
<b>Population By Age</b>			
Population <5 Years		5.2%	5.1%
Population 65+ Years		18.2%	20.4%
Median Age		39.3	41.1
Annual Expenditures	Spending Potential Index	Average Household Amount Spent	Total
<b>Health Care</b>	94	\$7,244.09	\$1,168,956,696
<b>Medical Care</b>	94	\$2,527.88	\$407,915,752
Physician Services	95	\$311.90	\$50,330,325
Dental Services	89	\$447.38	\$72,193,101
Eyecare Services	93	\$87.11	\$14,056,463
Lab Tests, X-Rays	94	\$82.26	\$13,274,812
Hospital Room and Hospital Services	94	\$265.40	\$42,826,971
Convalescent or Nursing Home Care	87	\$38.80	\$6,261,504
Other Medical services (1)	156	\$187.53	\$30,260,952
Nonprescription Drugs	95	\$169.70	\$27,383,515
Prescription Drugs	103	\$427.76	\$69,026,267
Nonprescription Vitamins	84	\$134.70	\$21,735,658
Medicare Prescription Drug Premium	96	\$126.83	\$20,465,697
Eyeglasses and Contact Lenses	94	\$118.24	\$19,079,741
Hearing Aids	92	\$32.45	\$5,236,592
Medical Equipment for General Use	94	\$9.40	\$1,516,400
Other Medical Supplies/Equipment (2)	122	\$88.42	\$14,267,754
<b>Health Insurance</b>	94	\$4,716.21	\$761,040,944
Blue Cross/Blue Shield	96	\$1,292.16	\$208,511,326
Fee for Service Health Plan	96	\$945.73	\$152,609,819
HMO	87	\$656.10	\$105,872,527
Medicare Payments	97	\$1,100.73	\$177,622,076
Long Term Care Insurance	98	\$65.99	\$10,648,649
Dental Care Insurance	95	\$170.83	\$27,566,246
Vision Care Insurance	98	\$43.71	\$7,053,433
Prescription Drug Insurance	104	\$7.92	\$1,278,411
Other Single Service Insurance (3)	88	\$13.67	\$2,205,123
Medicaid Premiums	97	\$10.97	\$1,770,257
Tricare/Military Premiums	89	\$10.35	\$1,670,564
Children's Health Ins Program Premiums	109	\$1.11	\$178,470

**Data Note:** The Spending Potential Index (SPI) is household-based, and represents the amount spent for a product or service relative to a national average of 100. Detail may not sum to totals due to rounding. **(1) Other Medical Services** includes Services by Medical Professionals other than Physicians, Outpatient Hospital Care, Blood Donation, and Ambulance, Dialysis, Emergency Room, Oxygen or Rescue Services. **(2) Other Medical Supplies/Equipment** includes Topicals, Dressings, Supportive and Convalescent Medical Equipment, Rental of Medical Equipment for General Use, and Rental of Supportive and Convalescent Medical Equipment. **(3) Other Single Service Insurance** Other Single Service Insurance includes health insurance coverage that provides for only one type of service, other than dental care, vision care, prescriptions, and long-term care.

**Source:** Esri current year and 5 year forecasts; Consumer Spending data are derived from the Consumer Expenditure Surveys, Bureau of Labor Statistics.



We have no reason to doubt the accuracy of information contained herein, but we cannot guarantee it. All information should be verified prior to purchase and/or lease.