



# AIRPORT 85 BUSINESS PARK

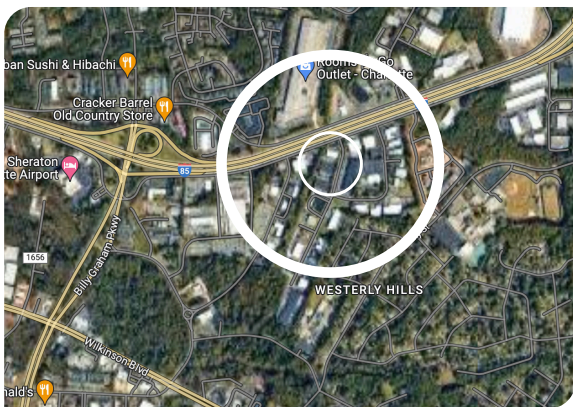
2732 INTERSTATE ST. CHARLOTTE, NC

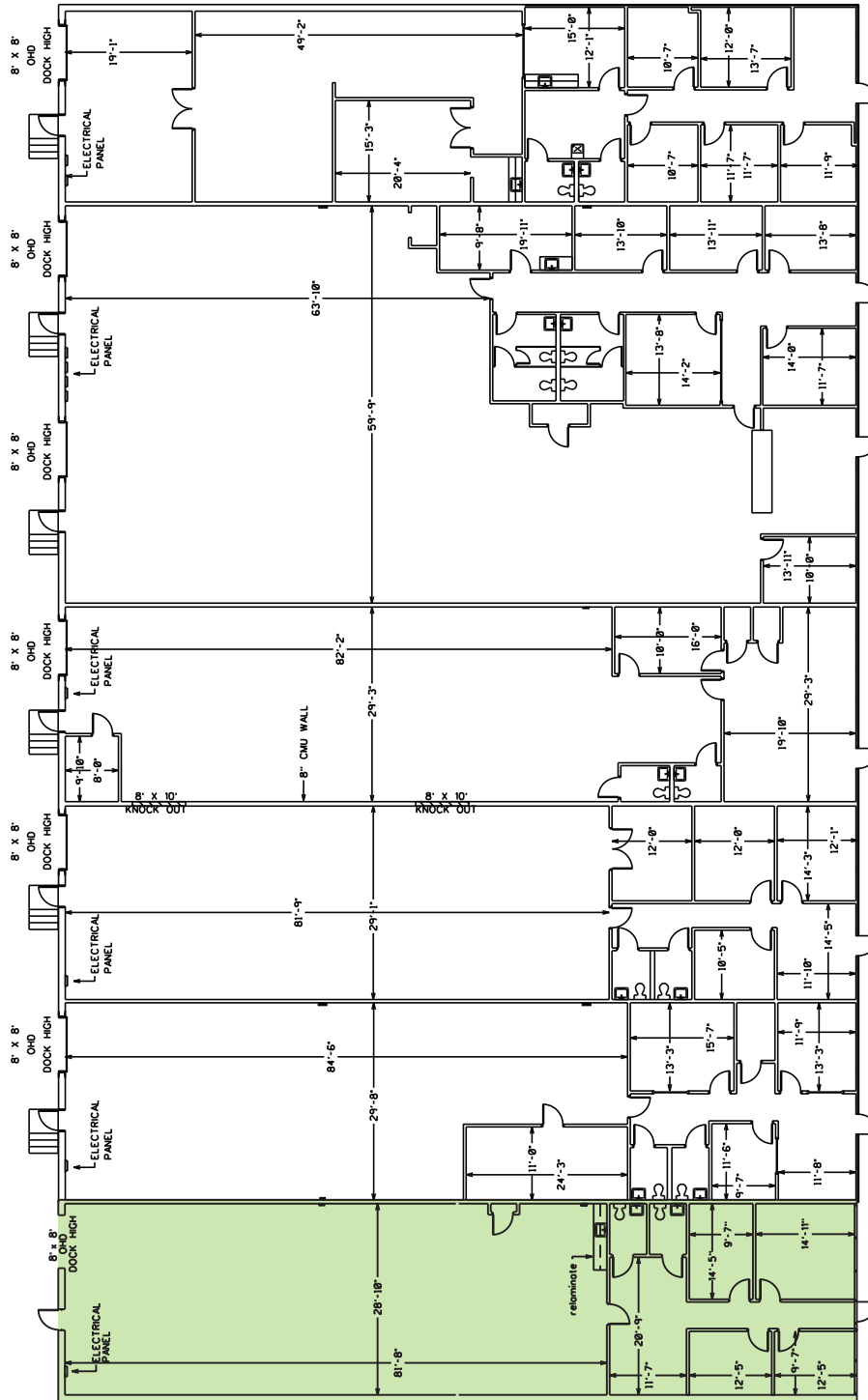
**AVAILABLE**  
JULY 2023



**3,625 SF, Suite G, with Ramp**  
Dock High

- Office | Flex | Distribution
- Minutes to Airport, I-85, Billy Graham Pkwy / I-485
- 16' 5" Clear Height in Warehouse zoned I-1
- Brick on brick design with tinted glass
- Ideal for technical service, back office operation
- Ample parking, Security lighting and gas heating in warehouse
- Minutes away from Sheraton, Marriott's Springhill Suites, and Comfort Suites
- Norfolk Southern Intermodal Terminal in close proximity (see attached map)





**2732  
SUITE - A**  
3,602 sq. ft.

**2732  
SUITE - B & C**  
7,255 sq. ft.

**2732  
SUITE - D**  
3,592 sq. ft.

**2732  
SUITE - E**  
3,567 sq. ft.

**2732  
SUITE - F**  
3,628 sq. ft.

**AVAILABLE**

**2732  
SUITE - G**  
3,625 sq. ft.

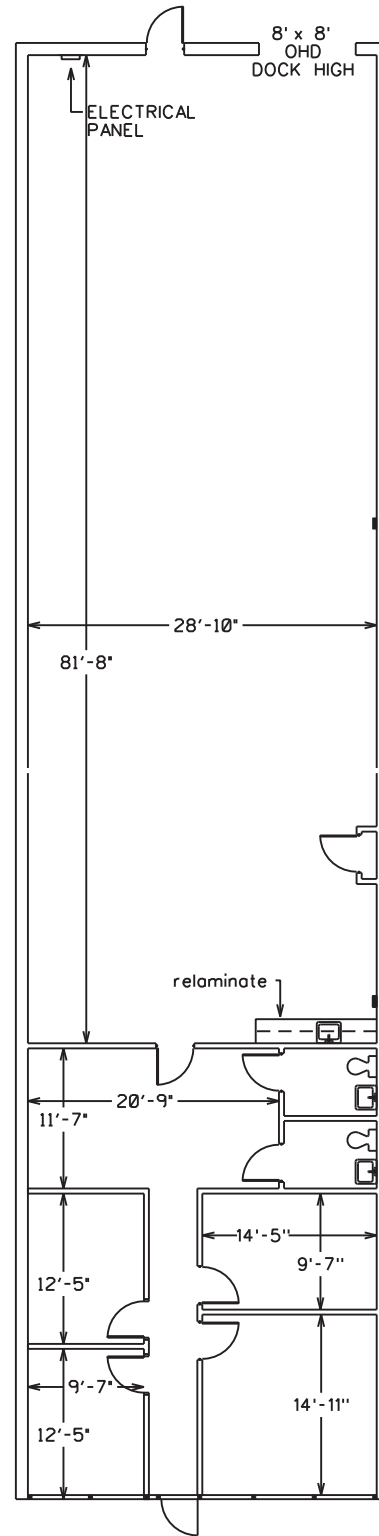
AVAILABLE

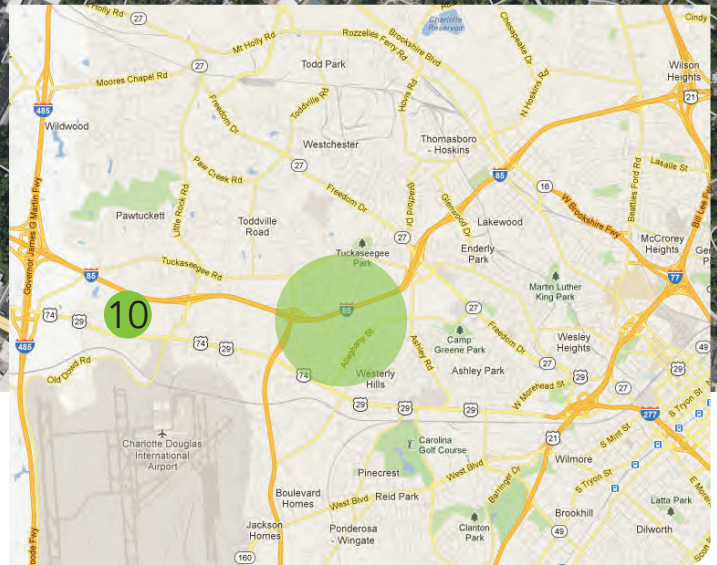
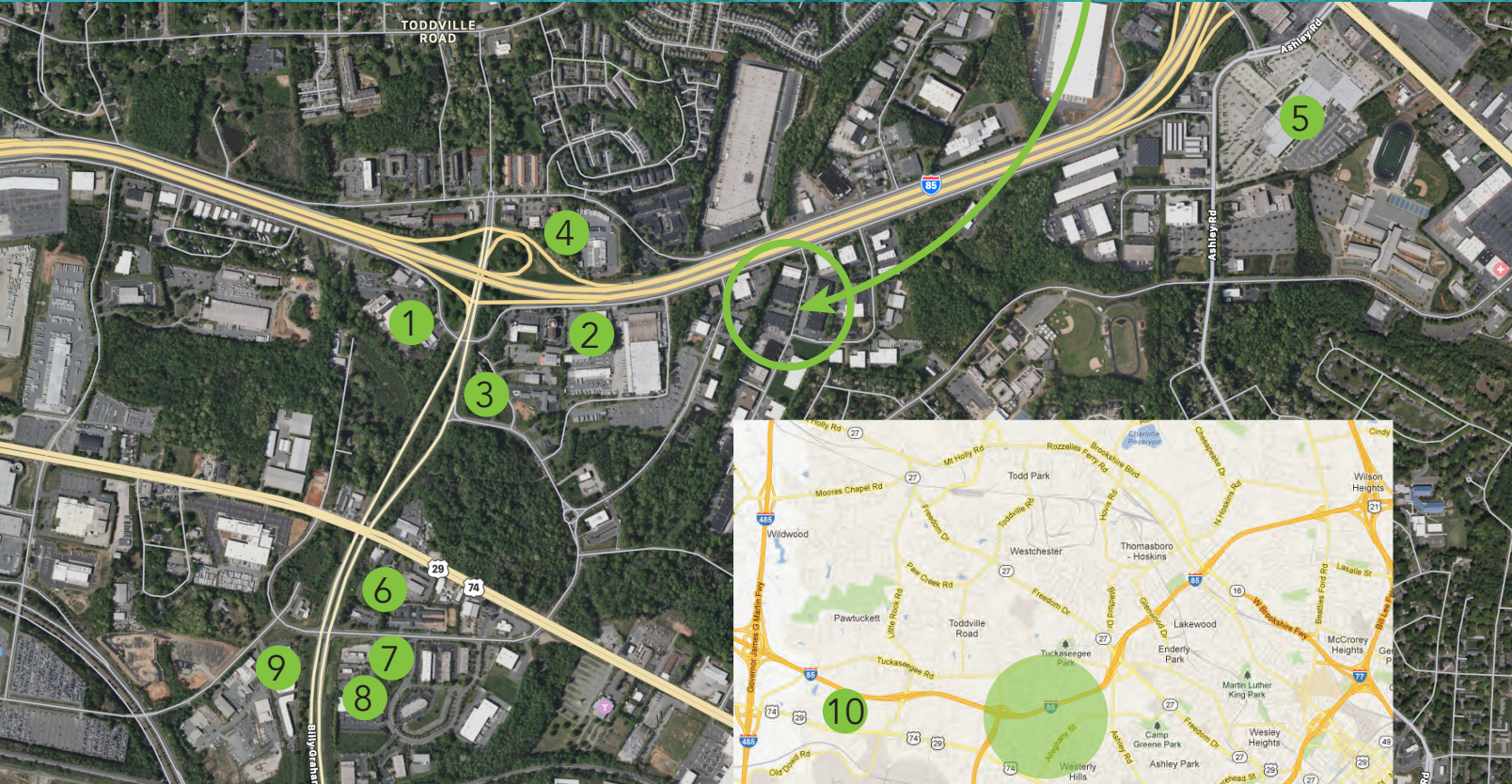


# SUITE G

3,625 sq. ft.

2732 Interstate St.  
Suite F, Charlotte, NC





### LOCATED NEARBY

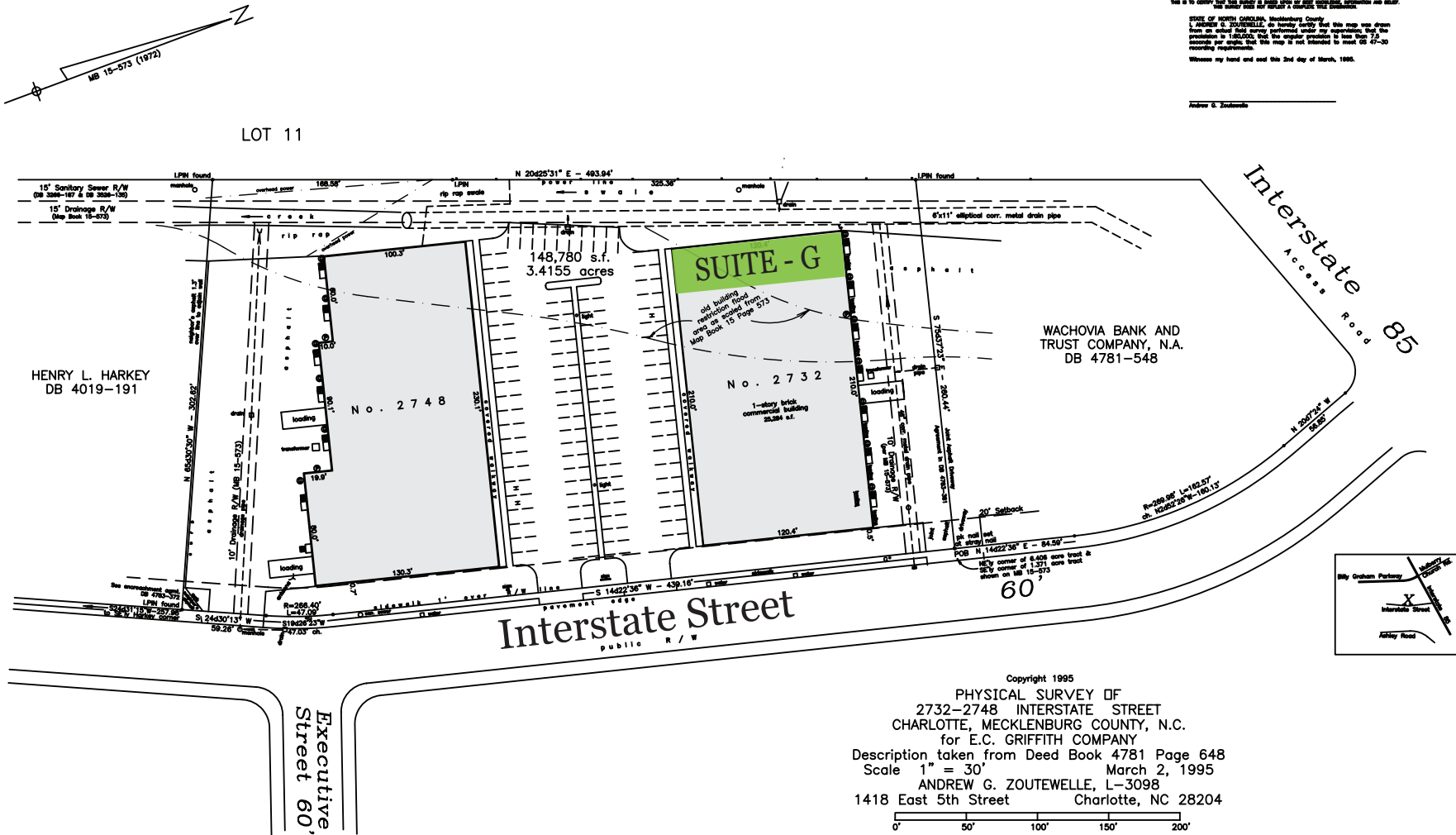
- 1 Sheraton Hotel
- 2 Spring Hill Suites by Marriott
- 3 Comfort Suites
- 4 Cracker Barrel
- 5 Meck County Services Building
- 6 Wendy's
- 7 McDonalds
- 8 KFC / Taco Bell
- 9 Bojangles
- 10 Charlotte Inland Terminal

### ADVANTAGES

- Office | Flex | Distribution
- 3,000-5,000 sq ft bays
- Dock High Door & Ramps Available
- 16' - 5" Clear Height in Warehouse Zoned I-1
- Minutes from Charlotte Douglas International Airport, I-85, I-485, I-77 and Billy Graham Pkwy
- Charlotte Inland Terminal Intermodal Port

THIS SURVEY IS OFFERED TO YOU FOR AN EXERCISE OF OPTION.  
THIS IS TO CORRECT THE SURVEY OF THE AIRPORT 85 BUSINESS PARK AND ADJACENT AREAS.  
STATE OF NORTH CAROLINA, Mecklenburg County  
I, Andrew G. Zoutewelle, Mecklenburg County Surveyor, do hereby certify that this map was drawn from an actual field survey performed under my supervision, that the quantities in this map are true and correct to four (4) decimal places per acre, that this map is not intended to meet the 67-30 recording requirements.  
Witness my hand and seal this 2nd day of March, 1995.

Andrew G. Zoutewelle



Copyright 1995  
PHYSICAL SURVEY OF  
2732-2748 INTERSTATE STREET  
CHARLOTTE, MECKLENBURG COUNTY, N.C.  
for E.C. GRIFFITH COMPANY  
Description taken from Deed Book 4781 Page 648  
Scale 1" = 30' March 2, 1995  
ANDREW G. ZOUTEWELLE, L-3098  
1418 East 5th Street Charlotte, NC 28204