

FOR SUBLEASE - FURNITURE INCLUDED!

2840 VICKSBURG LN N

Plymouth, MN 55447



STACK
INDUSTRIAL PARTNERS

PROPERTY OVERVIEW

General Building Information

Total Square Footage
152,627 SF

Parcel Size
10.96 acres

Year Built
1987

Zoning
I-1

Sublease Vacancy Specifications

Vacancy Size
17,746 SF

Available
Now

Warehouse Size
4,964 SF

Lease Expiration
06/01/2030

Office Size
12,782 SF

Parking
3.45 / 1,000

Dock Doors
2 Dock Doors (8' x 10')

Drive-In Doors
1 Drive-In (14' x 9')

Clear Height
15.5'

Climate Control
Fully Air Conditioned

Sprinklers
Yes

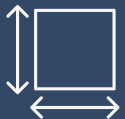
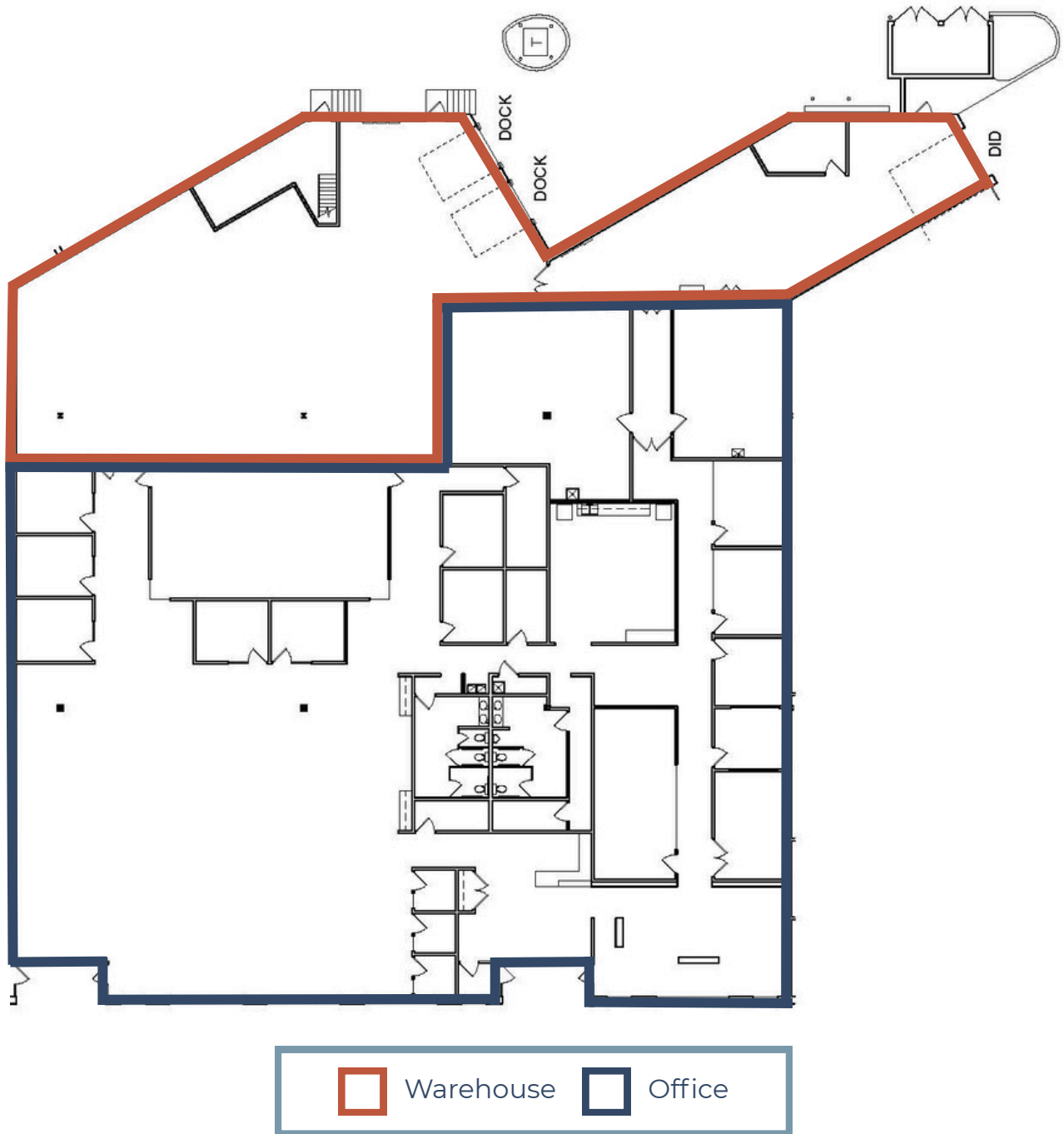
Power
325 amp, 480v; 3 Phase

Lease Details

Lease Rate
Negotiable

CAM/Tax (2026)
\$6.32 PSF

FLOOR PLAN



17,746 SF
Total

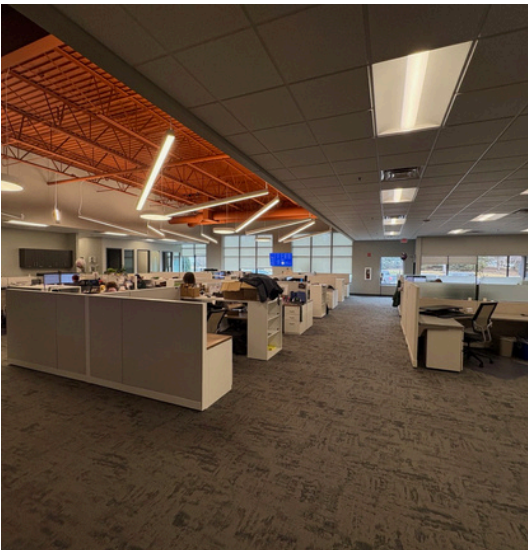
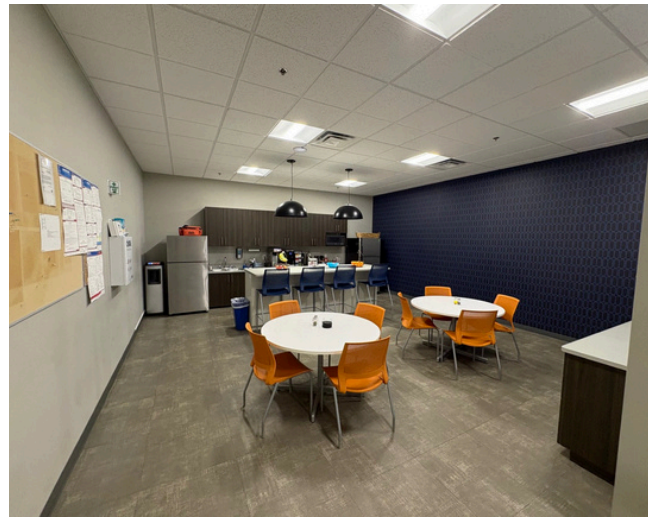


12,782 SF
Office

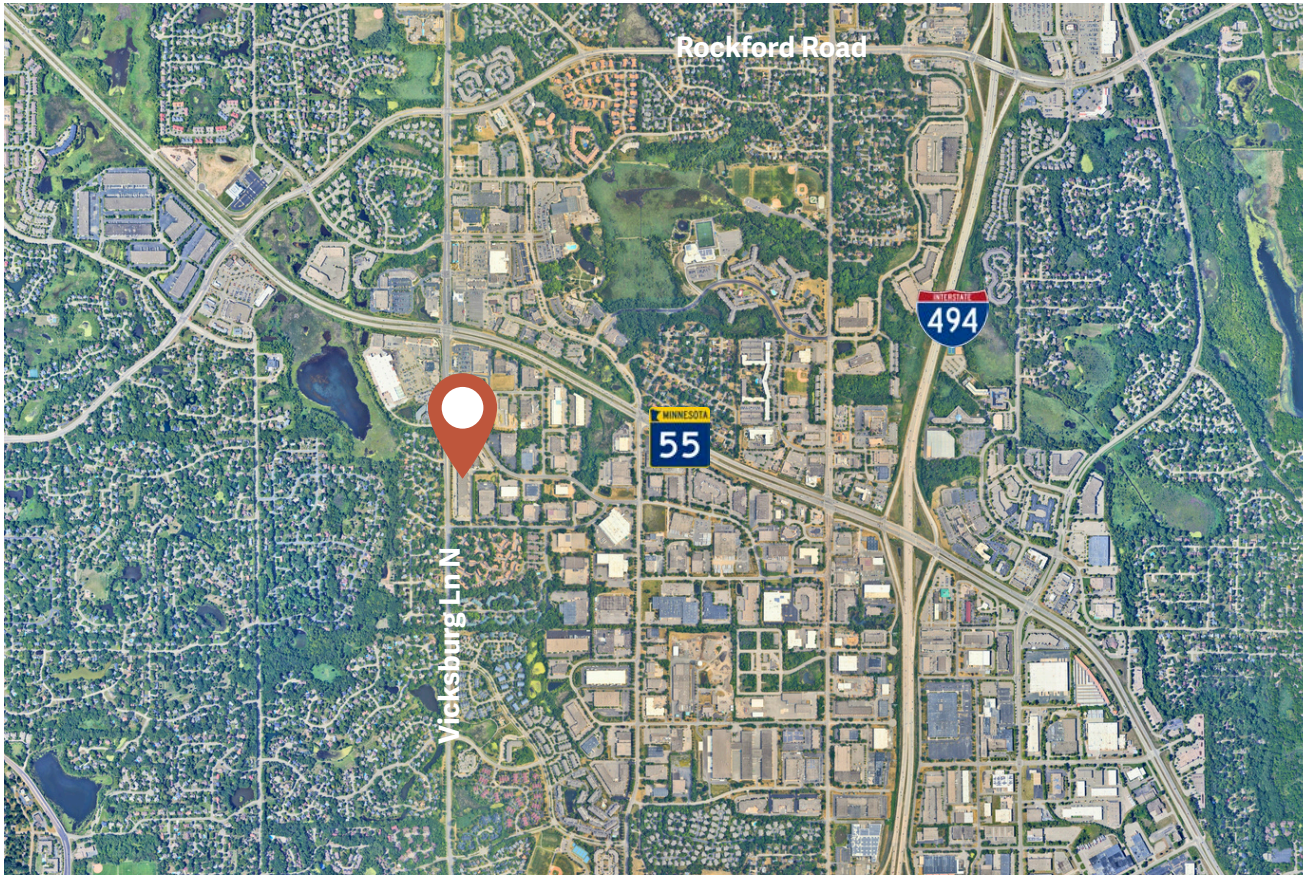


4,964 SF
Warehouse

PHOTOS



LOCATION



Nearby Restaurants

Buffalo Wild Wings
Takara Sushi
Chipotle
Applebee's
Nautical Bowls
Kobe Japanese Restaurant
Lucky 13 Pub
Starbucks
Potbelly
Jersey Mike's
Rock Elm Tavern



Nearby Retail

Hy-vee
Lunds & Byerlys
Lowe's Home Improvement
Michaels
The UPS Store
Fresh Thyme
Walgreens
Cub Foods
TJ Office Furniture
Von Hanson's
Chuck & Don's Food & Supplies

Ben Youds

ben.youds@stackindustrial.com

612-702-4293

Nate Erickson, SIOR

nate.erickson@stackindustrial.com

612-201-8943

stackindustrial.com 

STACK
INDUSTRIAL PARTNERS