



**COLDWELL BANKER
COMMERCIAL**

BLAIR



FOR SALE | 1736 EAST 7TH STREET

L O N G B E A C H , C A L I F O R N I A 9 0 8 1 3

For more information contact:

SHEVA HOSSEINZADEH

CBC Blair | Principal

T: 562.400.5949 | O: 562.548.7410

DRE #01922147

Sheva@cbcblair.com

VACHEL MCKEEVER

CBC Blair | Associate Vice President

T: 562.900.2938

DRE #02074710

VmcKeever@cbcblair.com



SCAN FOR VIDEO

COLDWELL BANKER COMMERCIAL BLAIR

333 West Broadway, Ste. 312,

Long Beach, CA 90802

Company BRE #01330395

www.cbcblair.com



BUILDING DESCRIPTION

ADDRESS:	1736 E. 7th Street Long Beach, CA 90813
SALE PRICE:	\$1,225,000
PRICE PSF:	\$312 PSF
BUILDING SIZE:	3,920 SF
LOT SIZE:	5,087 SF
ZONING:	LBCNR
APN:	7266-022-010

PROPERTY HIGHLIGHTS

- Corner Property located on the high traffic corridor of 7th Street
- Great Owner/User property
- Facade and structural upgrades were recently done to the exterior of the premises
- Original vintage monument sign located on the Premises
- Excellent visibility
- Easy accessibility to the 405/ 605 Freeways
- High ceilings with skylights throughout

For more information contact:

SHEVA HOSSEINZADEH

CBC Blair | Principal

T: 562.400.5949 | O: 562.548.7410

DRE #01922147

Sheva@cbcblair.com

VACHEL MCKEEVER

CBC Blair | Associate Vice President

T: 562.900.2938

DRE #02074710

VmcKeever@cbcblair.com

COLDWELL BANKER COMMERCIAL BLAIR

333 West Broadway, Ste. 312

Long Beach, CA 90802

Company BRE #01330395

www.cbcblair.com

PROPERTY DESCRIPTION

Coldwell Banker Commercial BLAIR is pleased to present the property located at 1736–1740 E 7th Street, Long Beach, CA on the market for Sale. This 3 unit commercial building features high ceilings with skylights, an open layout, and is situated along the major arterial 7th Street corridor in Long Beach, providing excellent visibility and accessibility. The site includes approximately 3,920 square feet of building improvements situated on 5,084 square feet of land, per the Tax Assessor. A notable feature is its original vintage monument sign.

Currently, the property is fully leased to a single tenant who utilizes the space as an art gallery/print shop, offering a unique mixed-use configuration. The tenant's lease has expired on the two end-cap spaces which total approximately 1,855 SF; however, he still has a lease in place for the middle unit which totals approximately 2,006 SF until December 31, 2027. This property would be ideal for an owner/user.

ZONING

LBCNR - The Neighborhood Commercial Zoning District includes neighborhood-serving centers and corridors that provide small-scale, low-intensity uses to meet the daily retail and service needs of surrounding residents. Uses and the scale of development is compatible with surrounding residential neighborhoods and size designed to promote pedestrian and bicycle access. The scale is determined by the size of adjoining residential uses, the commercial lot size and the commercial street width. Special scale restrictions apply in these districts. The Neighborhood Commercial and Residential (CNR) District is a mixed-use district permitting small scale commercial uses and/or moderate density residential development at R-3-T densities. The Land Use Element plan will allow mixed-use and/or residential development projects in the near future (2-3 years)

RENT ROLL

1736 E. 7th Street	\$1,113/Per Month (Month - Month)
1738 E. 7th Street	\$2,560/Per Month (12/31/27)
1740 E. 7th Street	\$1,260/Per Month (Month - Month)

For more information contact:

SHEVA HOSSEINZADEH

CBC Blair | Principal

T: 562.400.5949 | O: 562.548.7410

DRE #01922147

Sheva@cbcblair.com

VACHEL MCKEEVER

CBC Blair | Associate Vice President

T: 562.900.2938

DRE #02074710

VmcKeever@cbcblair.com

COLDWELL BANKER COMMERCIAL BLAIR

333 West Broadway, Ste. 312

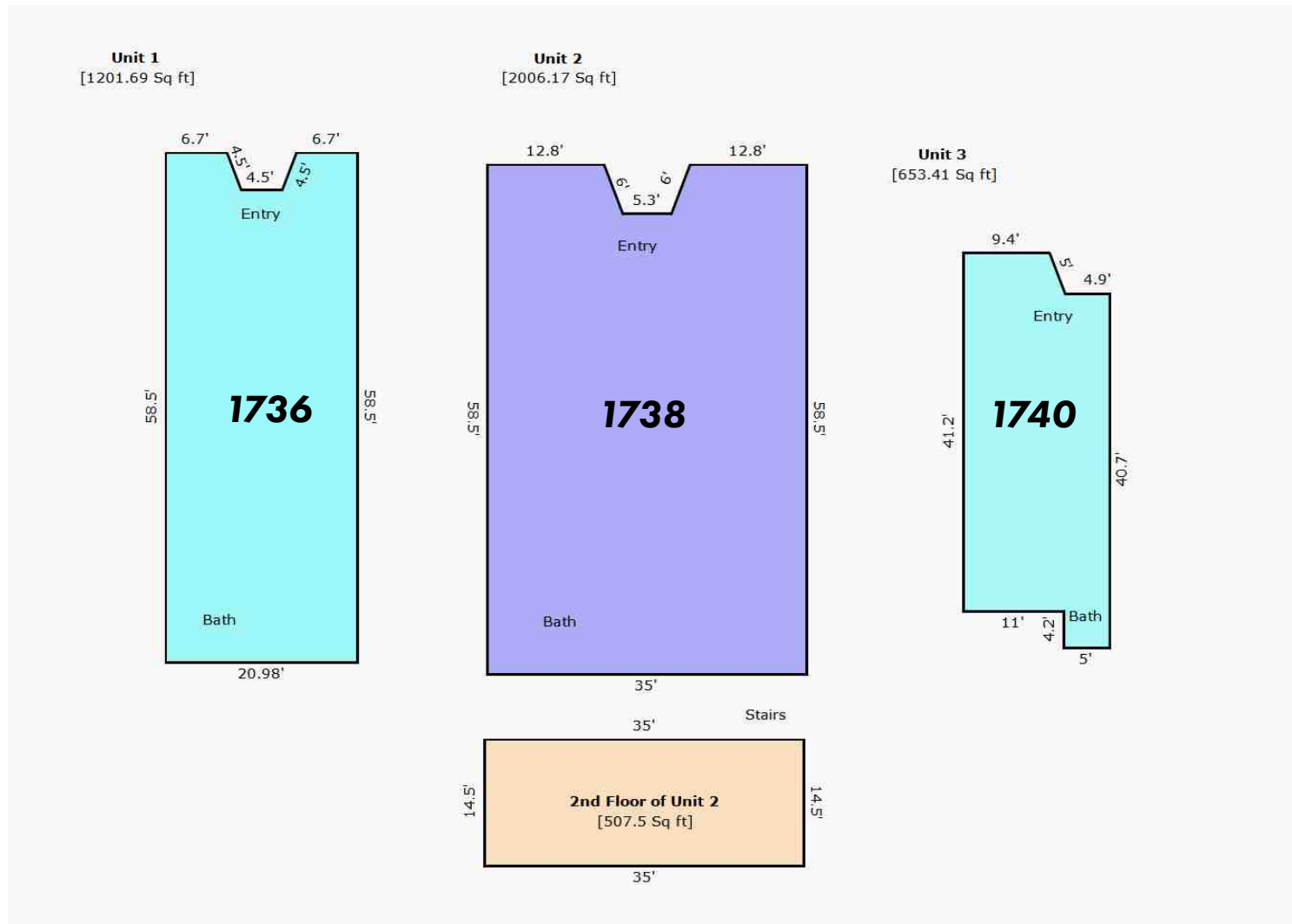
Long Beach, CA 90802

Company BRE #01330395

www.cbcblair.com



FLOOR PLAN



***Not to scale, buyer to verify**

For more information contact:

SHEVA HOSSEINZADEH

CBC Blair | Principal

T: 562.400.5949 | O: 562.548.7410

DRE #01922147

Sheva@cbcblair.com

VACHEL MCKEEVER

CBC Blair | Associate Vice President

T: 562.900.2938

DRE #02074710

VmcKeever@cbcblair.com

COLDWELL BANKER COMMERCIAL BLAIR

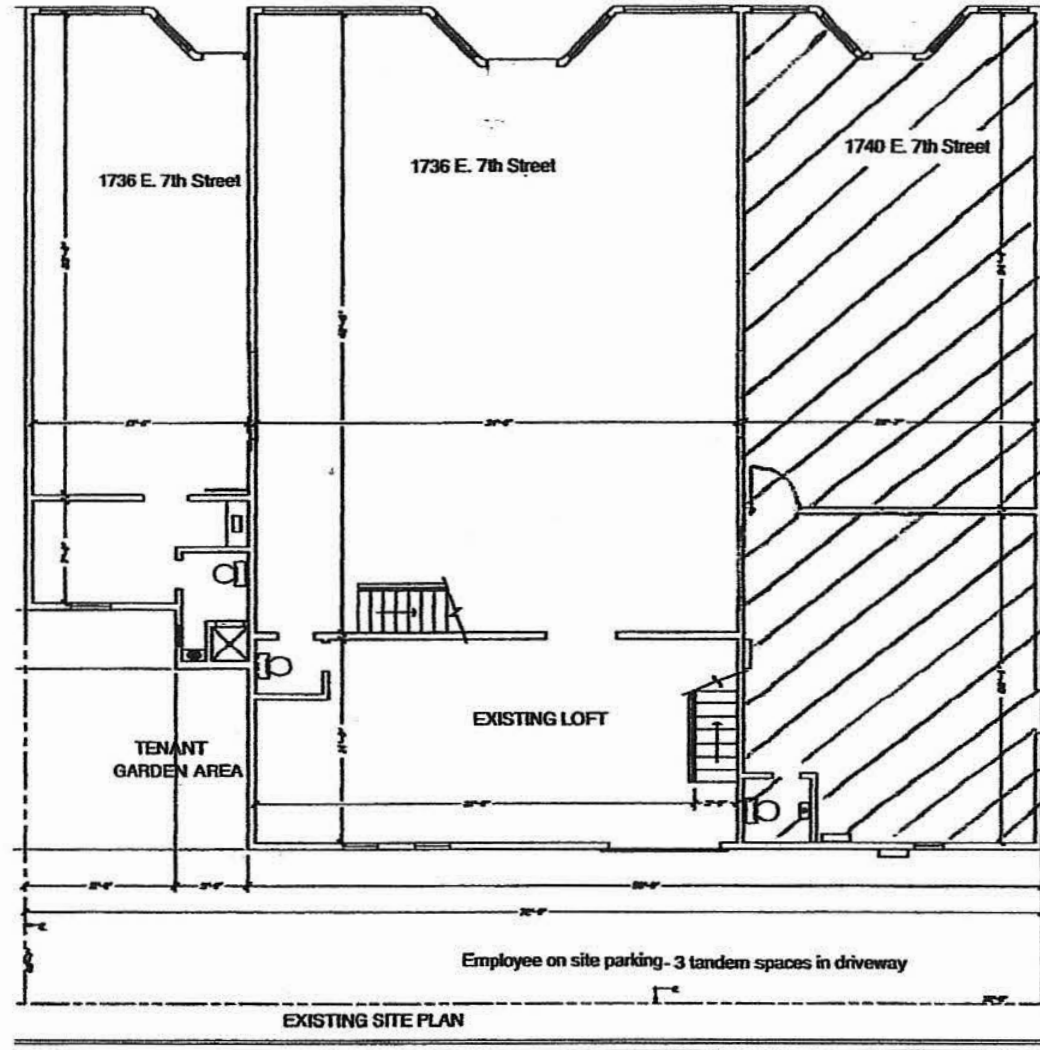
333 West Broadway, Ste. 312

Long Beach, CA 90802

Company BRE #01330395

www.cbcblair.com

SITE PLAN



****Not to scale, buyer to verify***

For more information contact:

SHEVA HOSSEINZADEH

CBC Blair | Principal

T: 562.400.5949 | O: 562.548.7410

DRE #01922147

Sheva@cbcblair.com

VACHEL MCKEEVER

CBC Blair | Associate Vice President

T: 562.900.2938

DRE #02074710

VmcKeever@cbcblair.com

COLDWELL BANKER COMMERCIAL BLAIR

333 West Broadway, Ste. 312

Long Beach, CA 90802

Company BRE #01330395

www.cbcblair.com

PROPERTY PHOTOS



For more information contact:

SHEVA HOSSEINZADEH

CBC Blair | Principal

T: 562.400.5949 | O: 562.548.7410

DRE #01922147

Sheva@cbcblair.com

VACHEL MCKEEVER

CBC Blair | Associate Vice President

T: 562.900.2938

DRE #02074710

Vmckeever@cbcblair.com

COLDWELL BANKER COMMERCIAL BLAIR

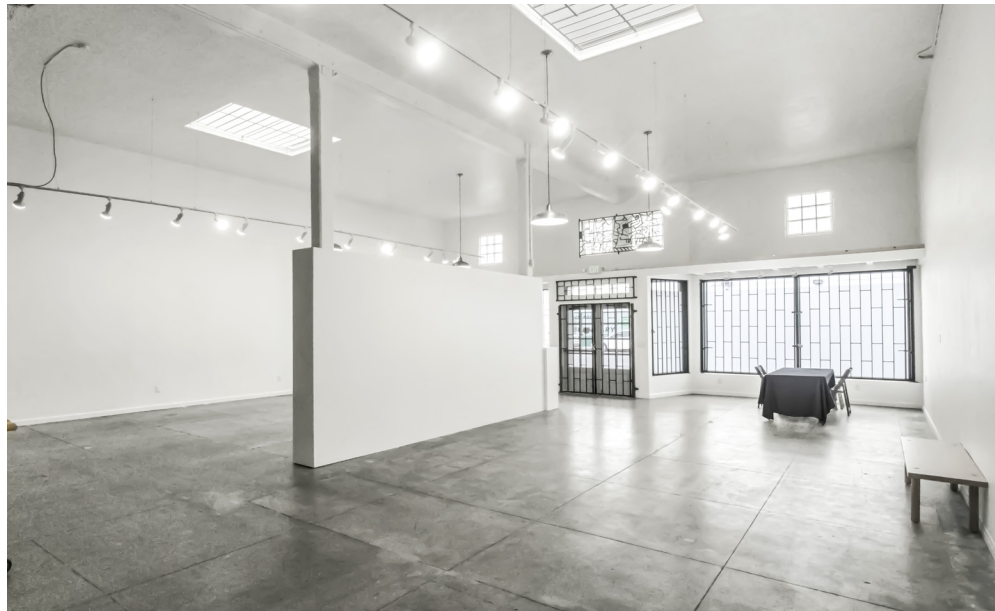
333 West Broadway, Ste. 312

Long Beach, CA 90802

Company BRE #01330395

www.cbcblair.com

PROPERTY PHOTOS



For more information contact:

SHEVA HOSSEINZADEH

CBC Blair | Principal

T: 562.400.5949 | O: 562.548.7410

DRE #01922147

Sheva@cbcblair.com

VACHEL MCKEEVER

CBC Blair | Associate Vice President

T: 562.900.2938

DRE #02074710

VmcKeever@cbcblair.com

COLDWELL BANKER COMMERCIAL BLAIR

333 West Broadway, Ste. 312

Long Beach, CA 90802

Company BRE #01330395

www.cbcblair.com

1738 EAST 7TH STREET LONG BEACH, CA 90813

For more information contact:



SHEVA HOSSEINZADEH

CBC Blair | Principal

T: 562.400.5949 | O: 562.548.7410

DRE #01922147

Sheva@cbcblair.com



VACHEL MCKEEVER

CBC Blair | Associate Vice President

T: 562.900.2938

DRE #02074710

VmcKeever@cbcblair.com



SCAN FOR VIDEO



**COLDWELL BANKER
COMMERCIAL**
BLAIR

