



# LEGACY AT LAKE PARK NOW LEASING

---

WEST VALLEY CITY, UTAH





# LEGACY AT LAKE PARK NOW LEASING



**BUILDING 1**  
4225 LAKE PARK BLVD.



**BUILDING 2**  
4255 LAKE PARK BLVD.



and expansive window lines that showcase stunning mountain views. This professionally managed property combines elegance, functionality, and accessibility—ideal for businesses seeking a prestigious and well-connected location.

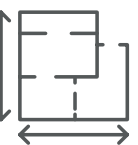
**Legacy at Lake Park** is a premier office campus featuring two Class A mid-rise buildings totaling approximately 198,465 square feet. Strategically located in the heart of West Valley City, the property offers unmatched access to major interstates and highways, making it highly convenient for the Salt Lake Valley workforce. Set within a 260-acre master-planned community adjacent to a 27-hole golf course, Legacy at Lake Park boasts dramatic two-story lobbies, high-end finishes,

## Property Highlights

- Two buildings conveniently located just off Bangerter Highway, with close proximity to Salt Lake City International Airport
- Individual suites and full floor opportunities
- 9' ceilings
- Dramatic two-story lobbies
- 4/1,000 parking ratio
- Ample window lines
- Spectacular mountain views
- 1st floor shower/lockers - Building 1
- Area amenities include shopping, dining and entertainment options
- Lease Rates Starting at \$21.00/RSF, FS



**LOCATION**  
JUST OFF BANGERTER HIGHWAY



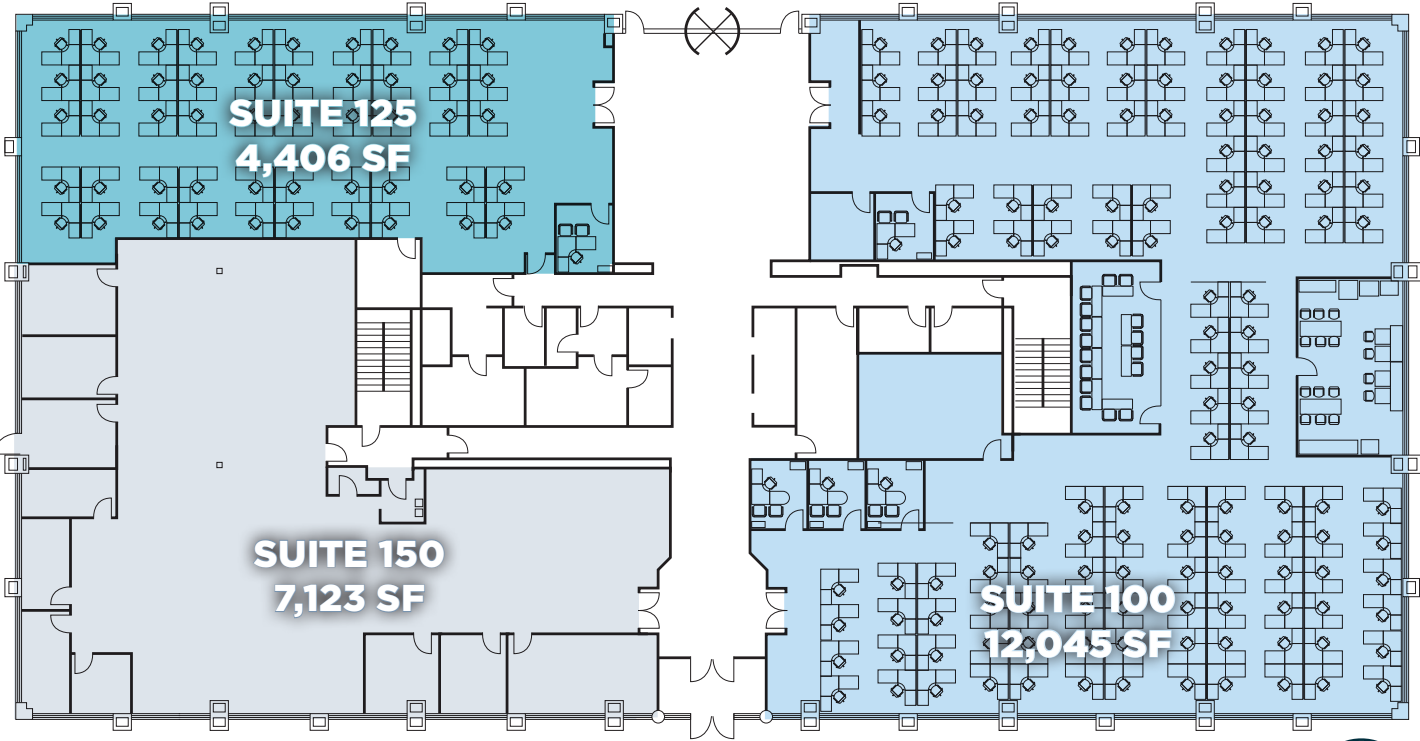
**FULL FLOORS**  
AVAILABLE



**9' CEILINGS**  
AMPLE WINDOW LINES



LEGACY AT LAKE PARK BUILDING 1 • 4225 LAKE PARK BLVD • FLOOR 1



**SUITE 100 | 12,045 SF | AVAILABLE IMMEDIATELY**  
CONFERENCE ROOM, BREAK ROOM, PRIVATE OFFICES, FURNITURE AVAILABLE



**SUITE 125 | 4,406 SF | AVAILABLE IMMEDIATELY**  
PRIVATE OFFICE, FURNITURE AVAILABLE

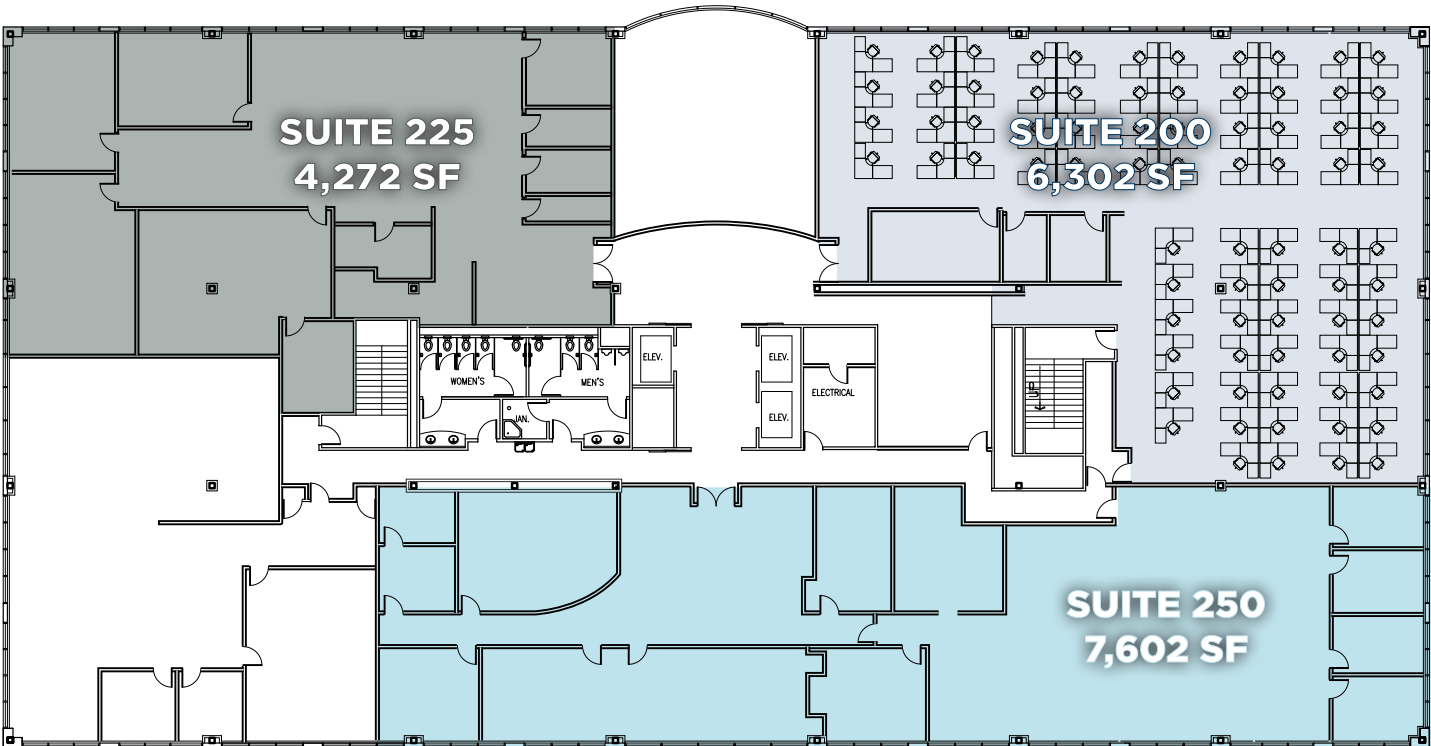


**SUITE 150 | 7,123 SF | AVAILABLE IMMEDIATELY**  
SMALL BREAK ROOM, PRIVATE OFFICES





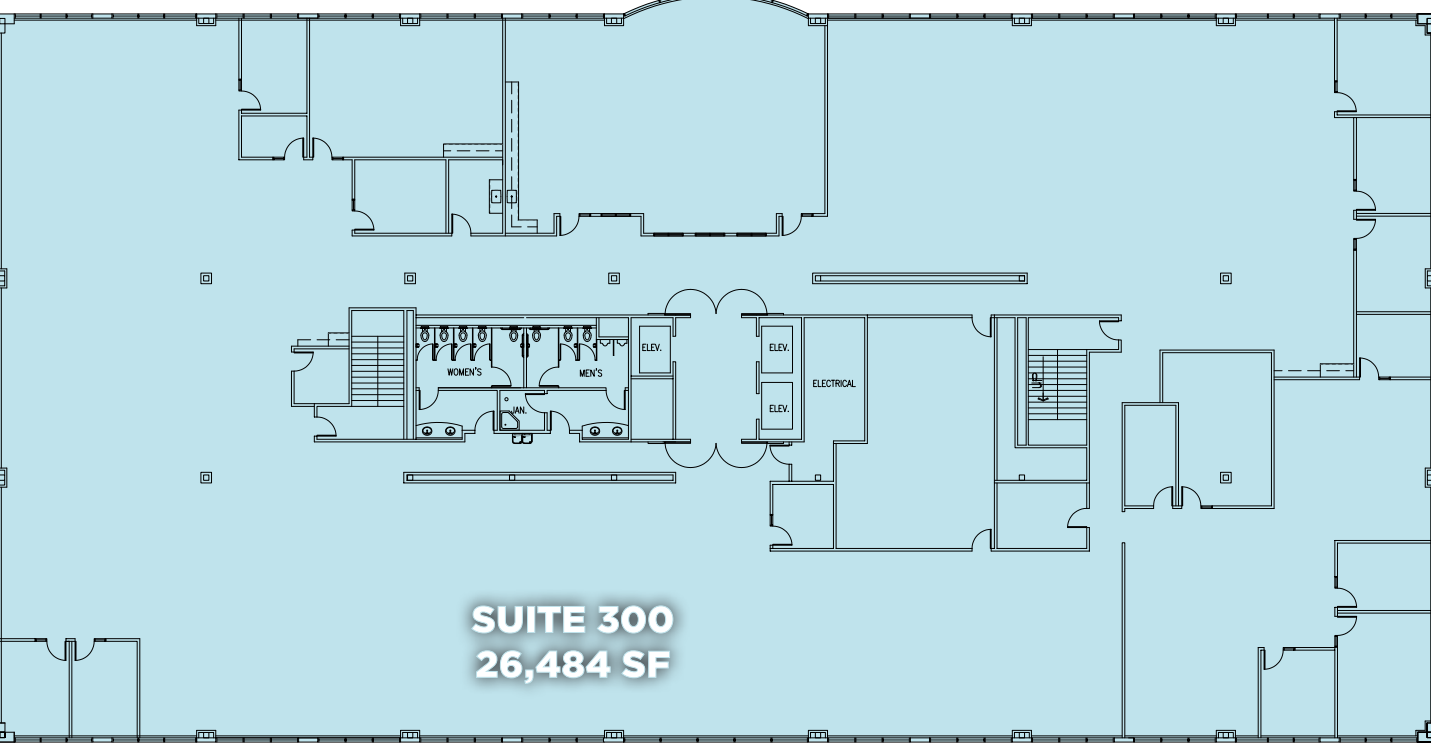
LEGACY AT LAKE PARK BUILDING 1 • 4225 LAKE PARK BLVD • FLOOR 2



- SUITE 200 | 6,302 SF | AVAILABLE IMMEDIATELY**  
LARGE BULL PEN AREA, PRIVATE OFFICES, FURNITURE AVAILABLE
- SUITE 225 | 4,272 SF | AVAILABLE AUGUST 1, 2026**
- SUITE 250 | 7,605 SF | AVAILABLE APRIL 1, 2026**



LEGACY AT LAKE PARK BUILDING 1 • 4225 LAKE PARK BLVD • FLOOR 3

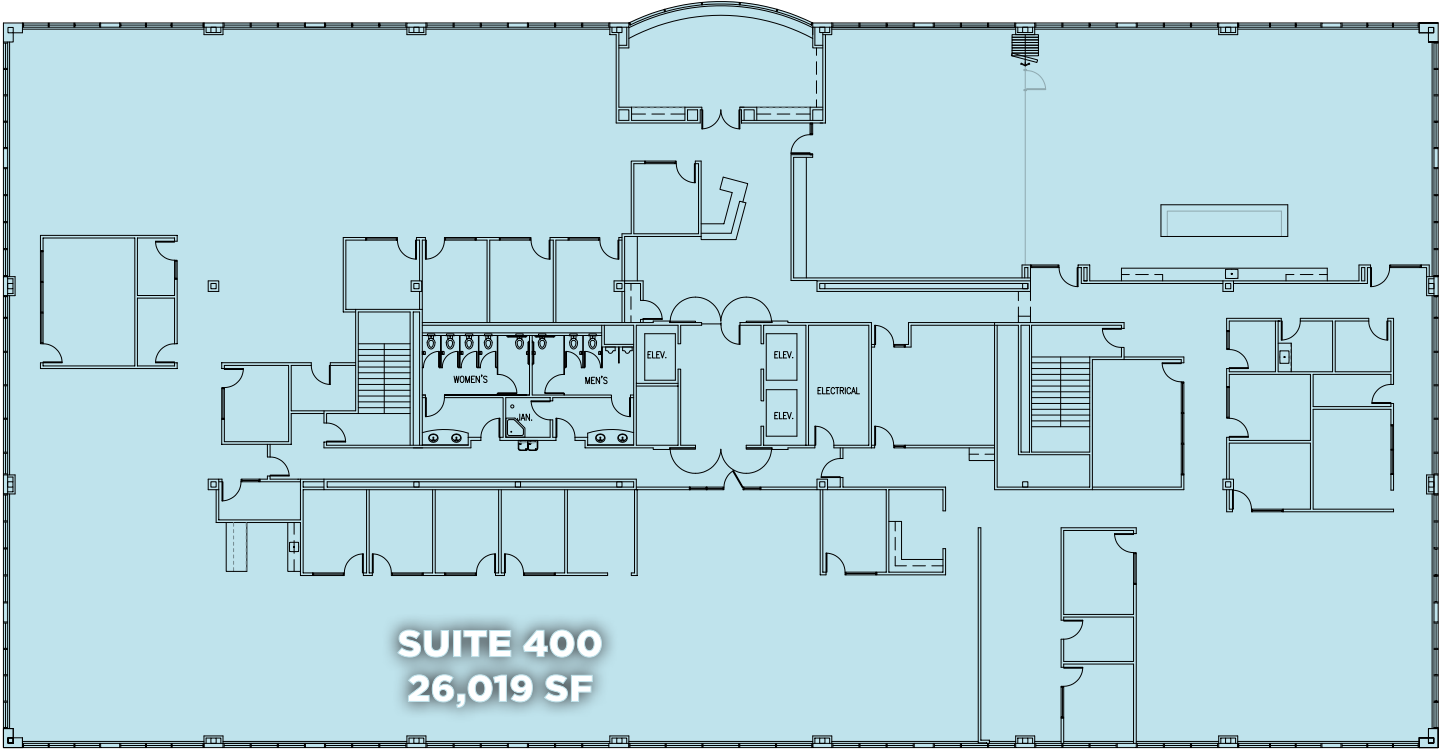


- SUITE 300 | 26,484 SF | AVAILABLE IMMEDIATELY**  
CONFERENCE ROOMS, PRIVATE OFFICES, BREAK ROOM





LEGACY AT LAKE PARK BUILDING 1 • 4225 LAKE PARK BLVD • FLOOR 4

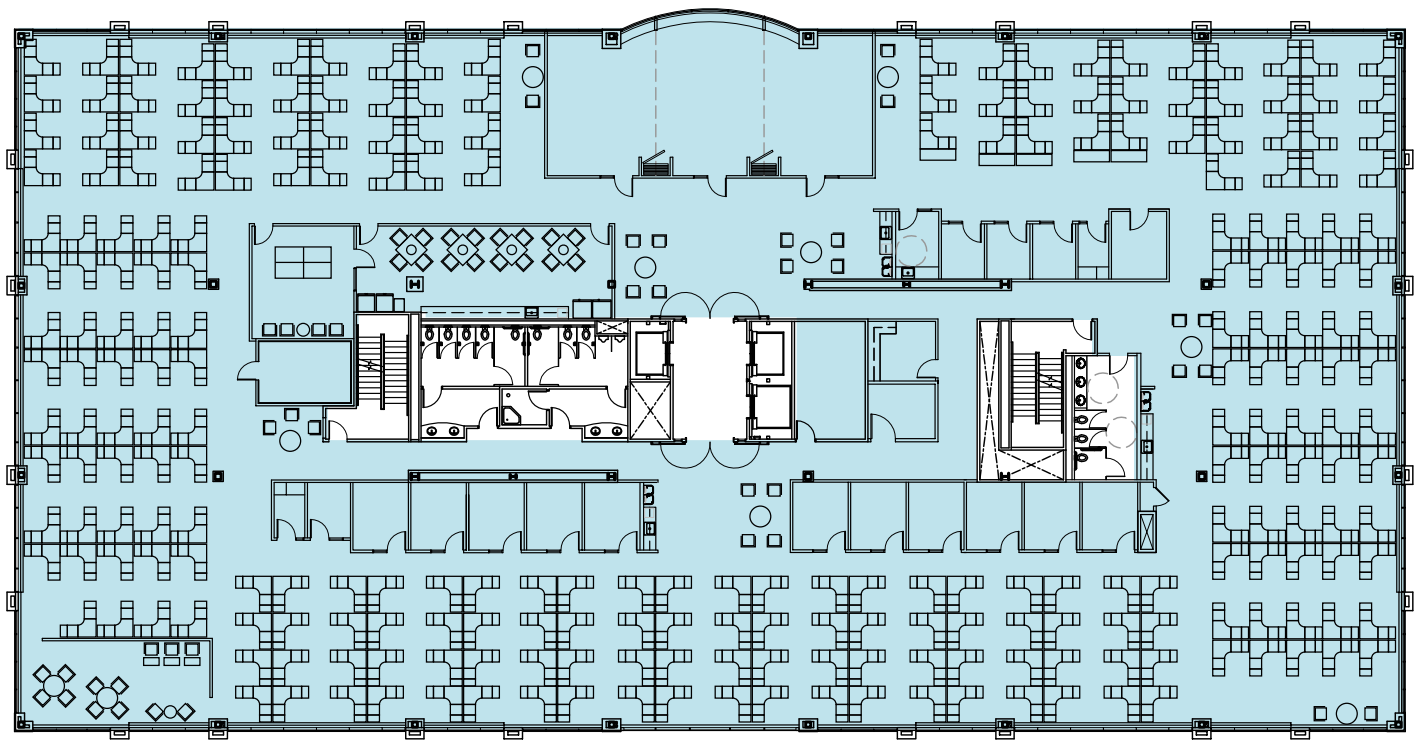


**SUITE 400 | 26,019 SF | AVAILABLE IMMEDIATELY**  
CONFERENCE ROOMS, BREAK ROOM, PRIVATE OFFICES





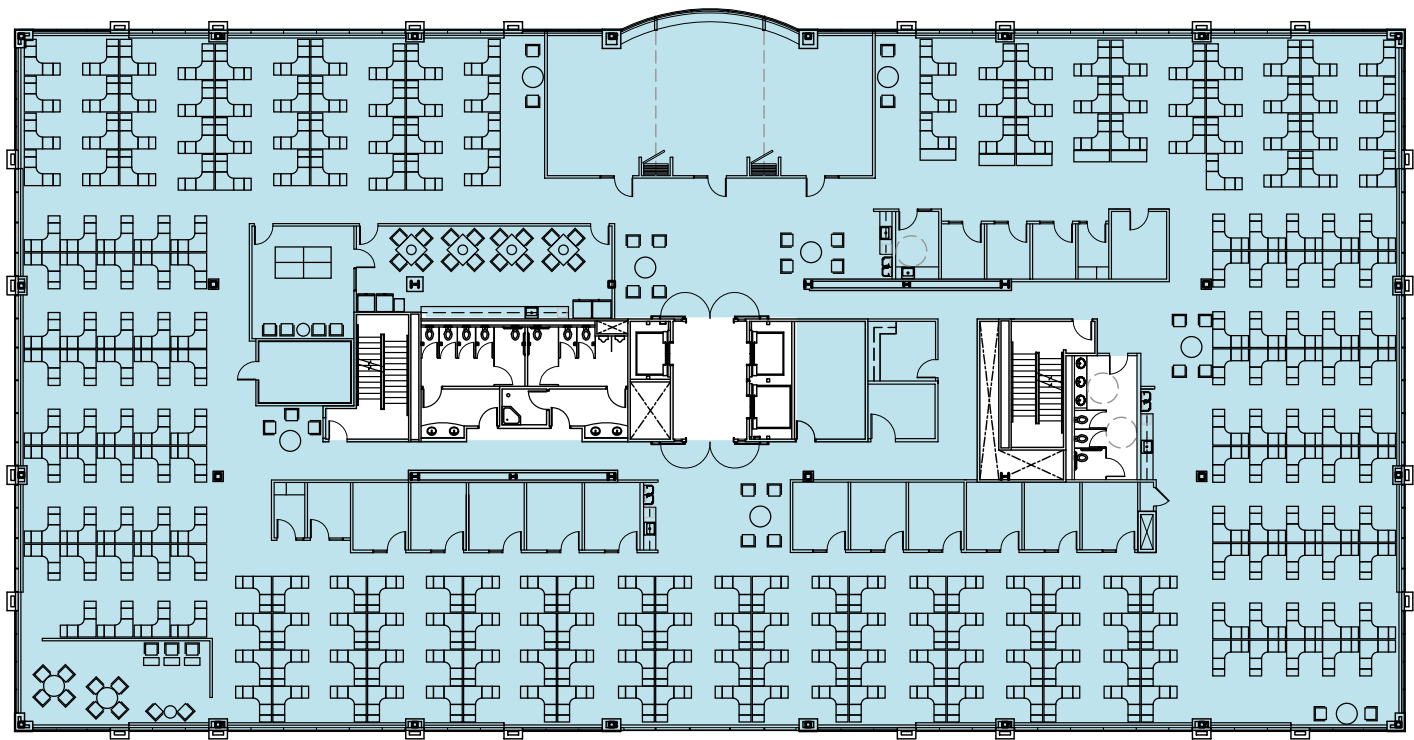
LEGACY AT LAKE PARK BUILDING 2 • 4255 LAKE PARK BLVD • FLOOR 3



**SUITE 300 | 24,970 SF | AVAILABLE IMMEDIATELY**  
CONFERENCE ROOMS, BREAK ROOM, PRIVATE OFFICES, FULLY FURNISHED



LEGACY AT LAKE PARK BUILDING 2 • 4255 LAKE PARK BLVD • FLOOR 4



**SUITE 400 | 24,970 SF | AVAILABLE IMMEDIATELY**  
CONFERENCE ROOMS, BREAK ROOM, PRIVATE OFFICES, FULLY FURNISHED

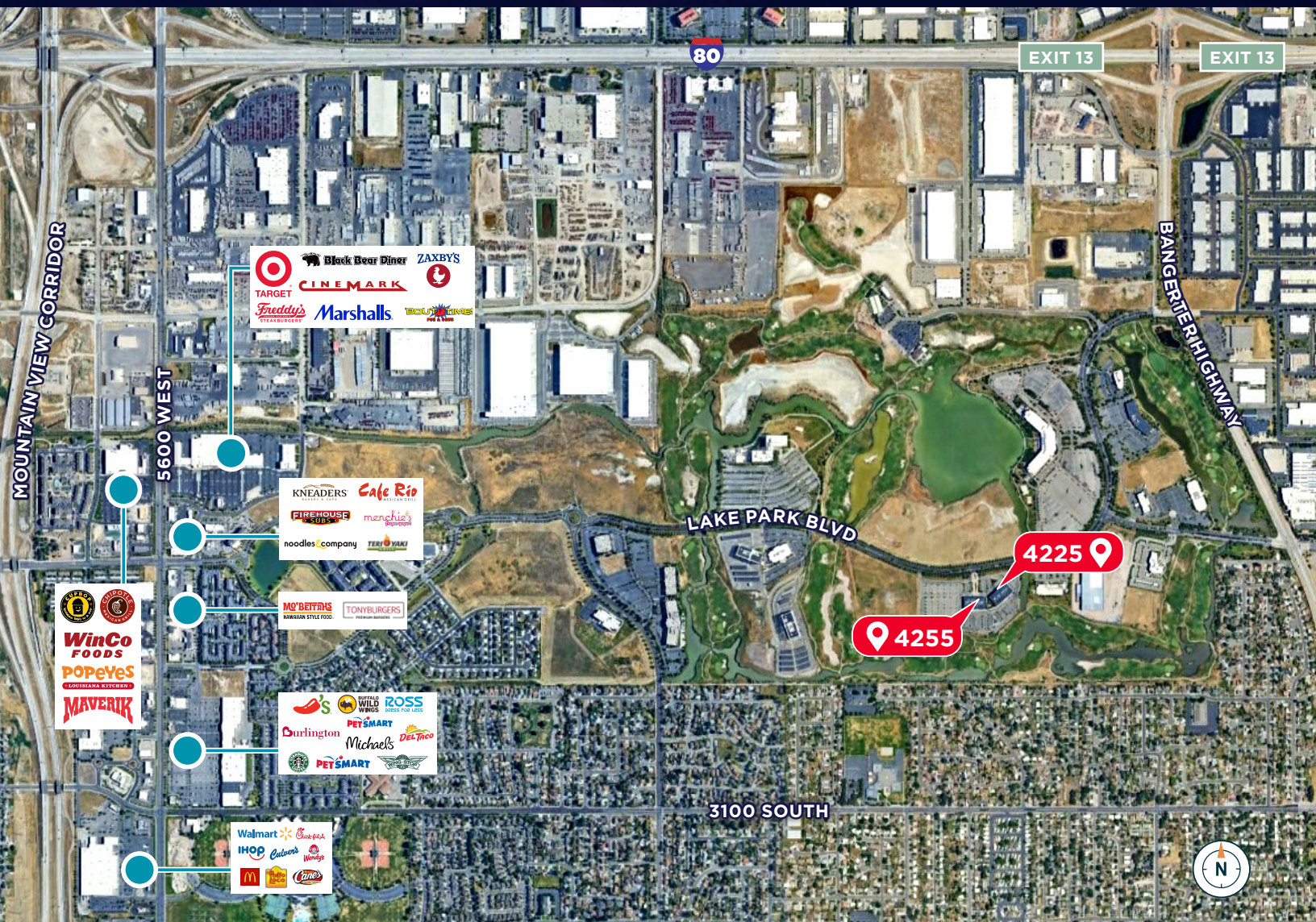




# LEGACY AT LAKE PARK NOW LEASING

## 4225 & 4255 LAKE PARK BLVD.

### WEST VALLEY CITY, UTAH



I-80, I-15,  
Bangerter Highway and  
Mountain View Corridor  
access within minutes.



Several Dining,  
Shopping and  
Entertainment options  
directly west.



Salt Lake City  
International Airport  
9 minutes/5 miles.



Downtown  
Salt Lake City  
17 minutes/9 miles.

**MIKE RICHMOND**  
EXECUTIVE MANAGING DIRECTOR  
+1 801 303 5434  
mike.richmond@cushwake.com

**DANA BAIRD, CCIM**  
EXECUTIVE MANAGING DIRECTOR  
+1 801 303 5526  
dana.baird@cushwake.com

**HANNAH KING**  
BROKERAGE SPECIALIST  
+1 801 303 5440  
hannah.king1@cushwake.com

©2025 Cushman & Wakefield. All rights reserved. The information contained in this communication is strictly confidential. This information has been obtained from sources believed to be reliable but has not been verified. NO WARRANTY OR REPRESENTATION, EXPRESS OR IMPLIED, IS MADE AS TO THE CONDITION OF THE PROPERTY (OR PROPERTIES) REFERENCED HEREIN OR AS TO THE ACCURACY OR COMPLETENESS OF THE INFORMATION CONTAINED HEREIN, AND SAME IS SUBMITTED SUBJECT TO ERRORS, OMISSIONS, CHANGE OF PRICE, RENTAL OR OTHER CONDITIONS, WITHDRAWAL WITHOUT NOTICE, AND TO ANY SPECIAL LISTING CONDITIONS IMPOSED BY THE PROPERTY OWNER(S). ANY PROJECTIONS, OPINIONS OR ESTIMATES ARE SUBJECT TO UNCERTAINTY AND DO NOT SIGNIFY CURRENT OR FUTURE PROPERTY PERFORMANCE.



**CUSHMAN &  
WAKEFIELD**