

FOR LEASE: OFFICE SPACE

620 E 18TH STREET

KANSAS CITY, MO 64108

PEAK
Real Estate Partners



PEAK

Real Estate Partners

CONTACT US:

PETER AGNELLO

(913) 200-8376

PAGNELLO@PEAKREP.COM

NICK AMBROSIO

(913) 439-9332

NICK@PEAKREP.COM

PROPERTY HIGHLIGHTS:

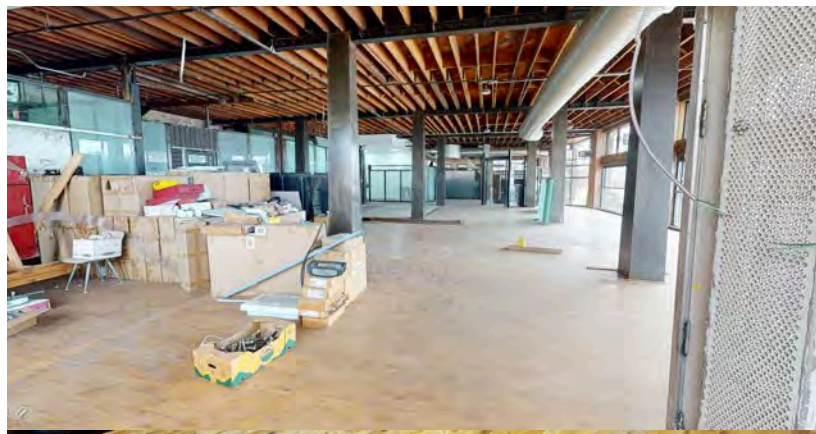
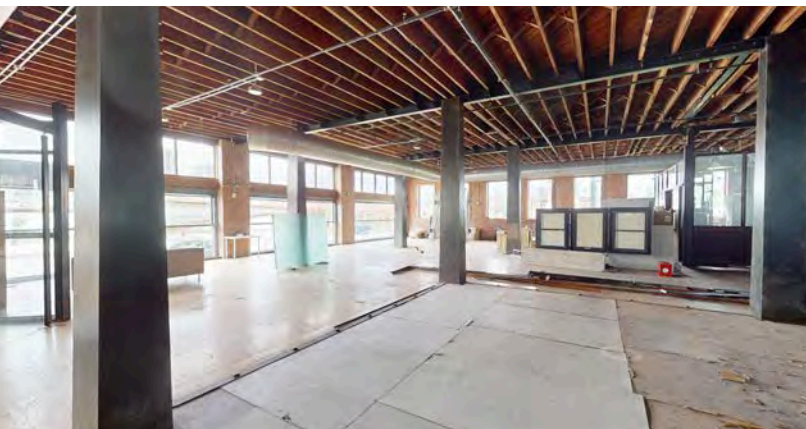
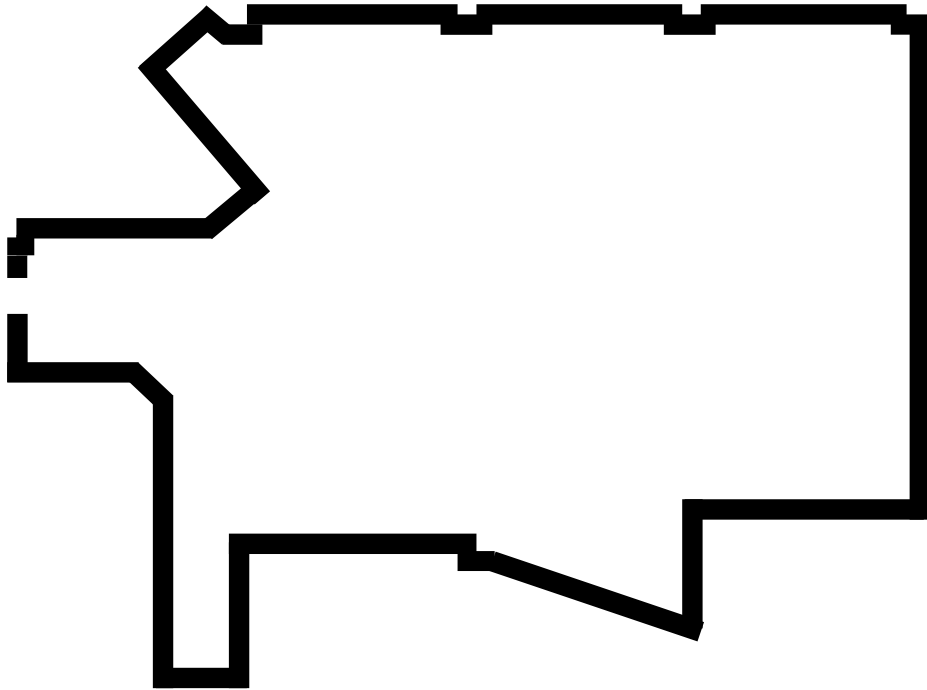
- 630 E 18th Street in the Crossroads Arts District
- **Availability:**
 - **Suite 100: 3,200 SF**
 - **Suite 201: 1,900 SF**
 - **Suite 203: 958 SF**
- Located within walking distance to a streetcar stop as well as a variety of restaurants and retail shops in the growing East Crossroads neighborhood
- Long term, local ownership

FLOOR PLAN

SUITE 100 | 620 E 18TH STREET

PEAK
Real Estate Partners

- 3,200 SQUARE FEET
- \$6,500/MONTH
- SIGNAGE OPPORTUNITIES

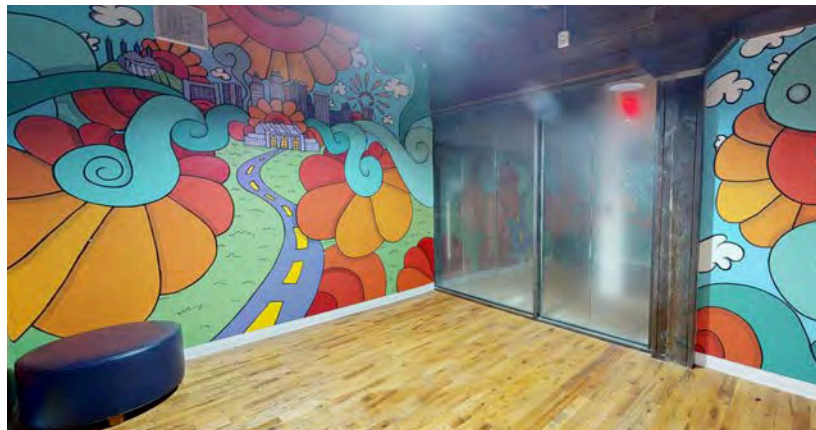
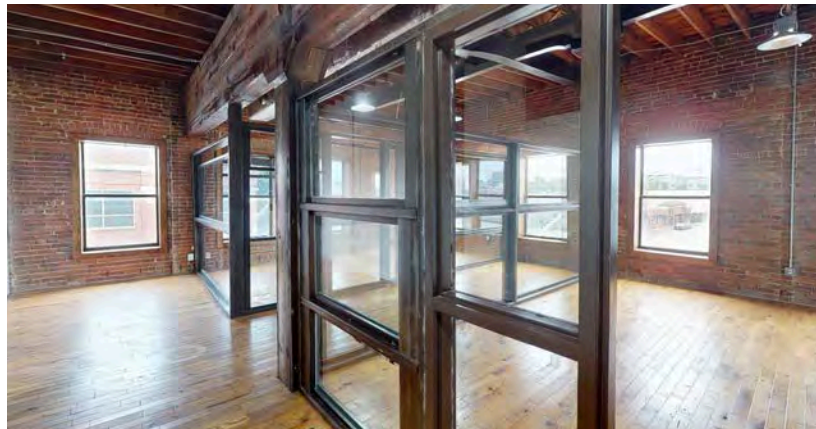
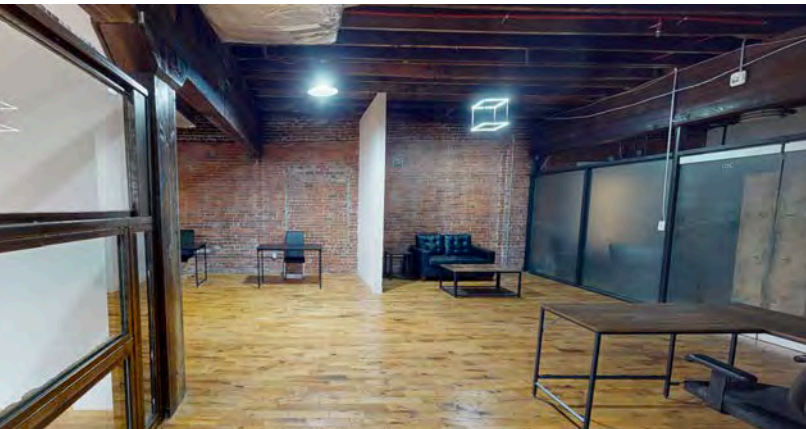
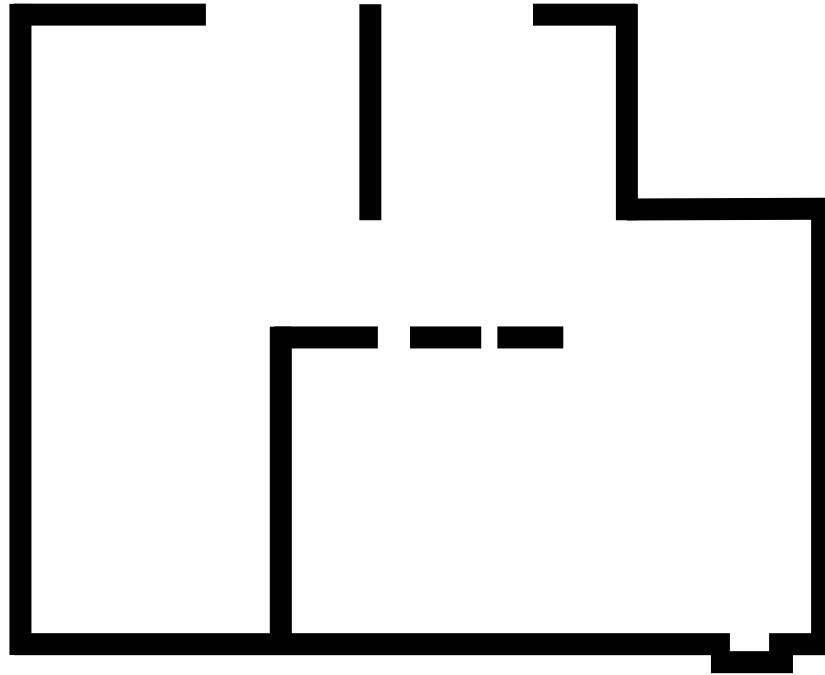


FLOOR PLAN

SUITE 201 | 620 E 18TH STREET

PEAK
Real Estate Partners

- **1,900 SQUARE FEET**
- RENT: \$2,975 PER MONTH
- UTILITIES: \$140 PER MONTH (ESTIMATE)



FLOOR PLAN

SUITE 203 | 620 E 18TH STREET

PEAK

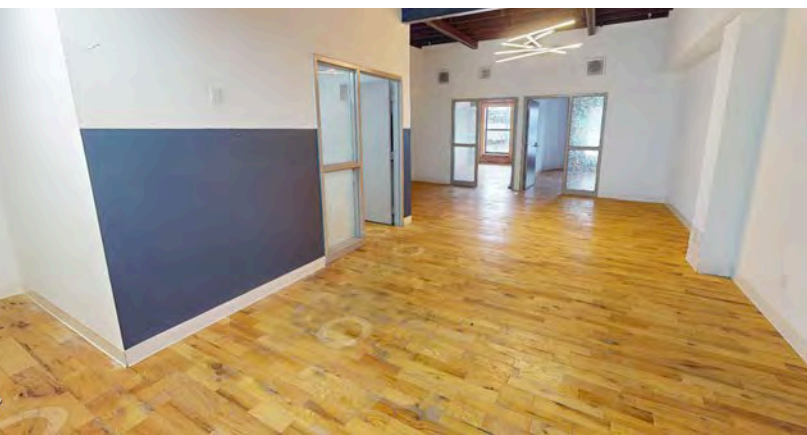
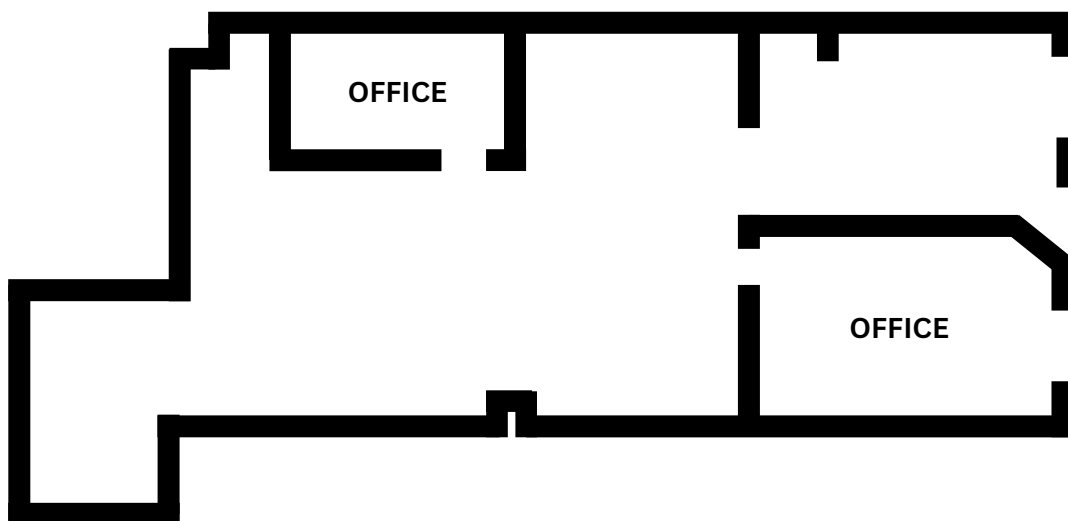
Real Estate Partners

- 958 SQUARE FEET
- RENT : \$1,600 PER MONTH
- TAXES : \$99.79 PER MONTH
- INSURANCE : \$42.31 PER MONTH
- UTILITIES : \$83.03 - \$134.12 PER MONTH

SCAN ME



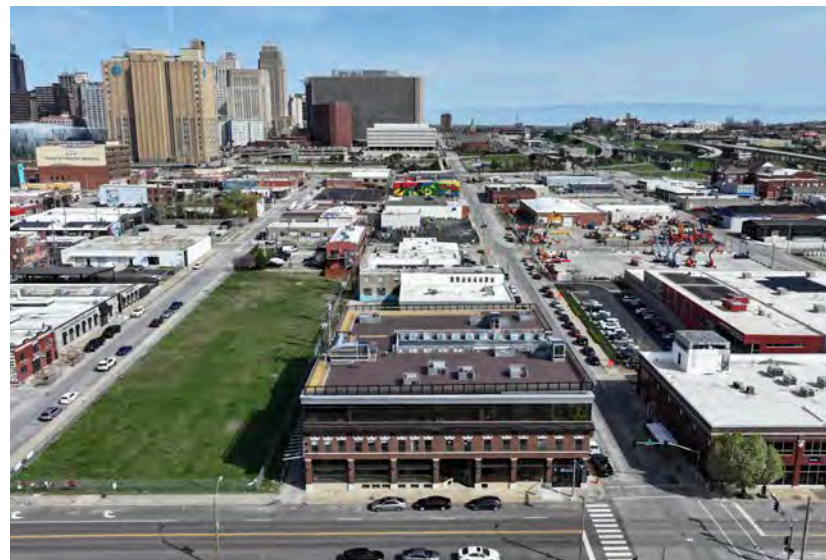
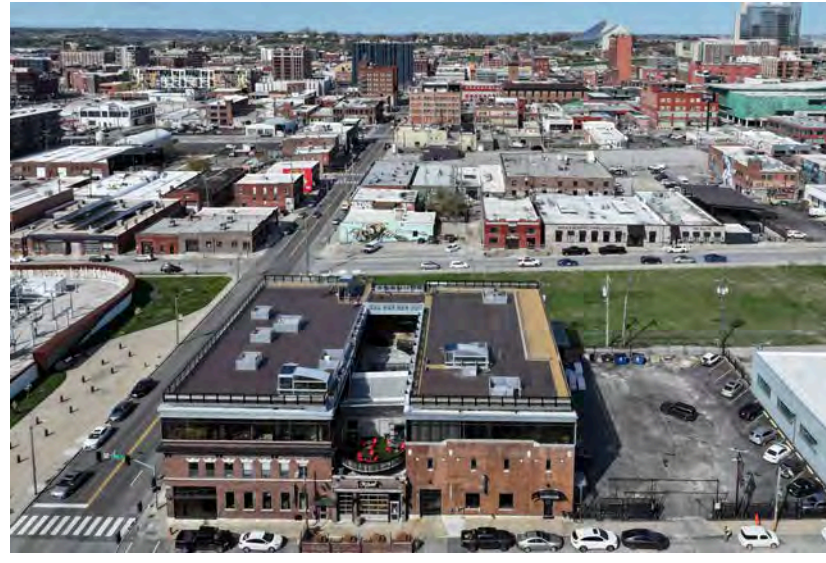
360° TOUR



PROPERTY PHOTOS

620 E 18TH STREET

PEAK
Real Estate Partners



AMENITY MAP

620 E 18TH STREET

PEAK

Real Estate Partners



POPULATION	
1-MILE	15,026
3-MILE	108,137
5-MILE	243,846



DAYTIME POPULATION	
1-MILE	59,261
3-MILE	152,206
5-MILE	270,454



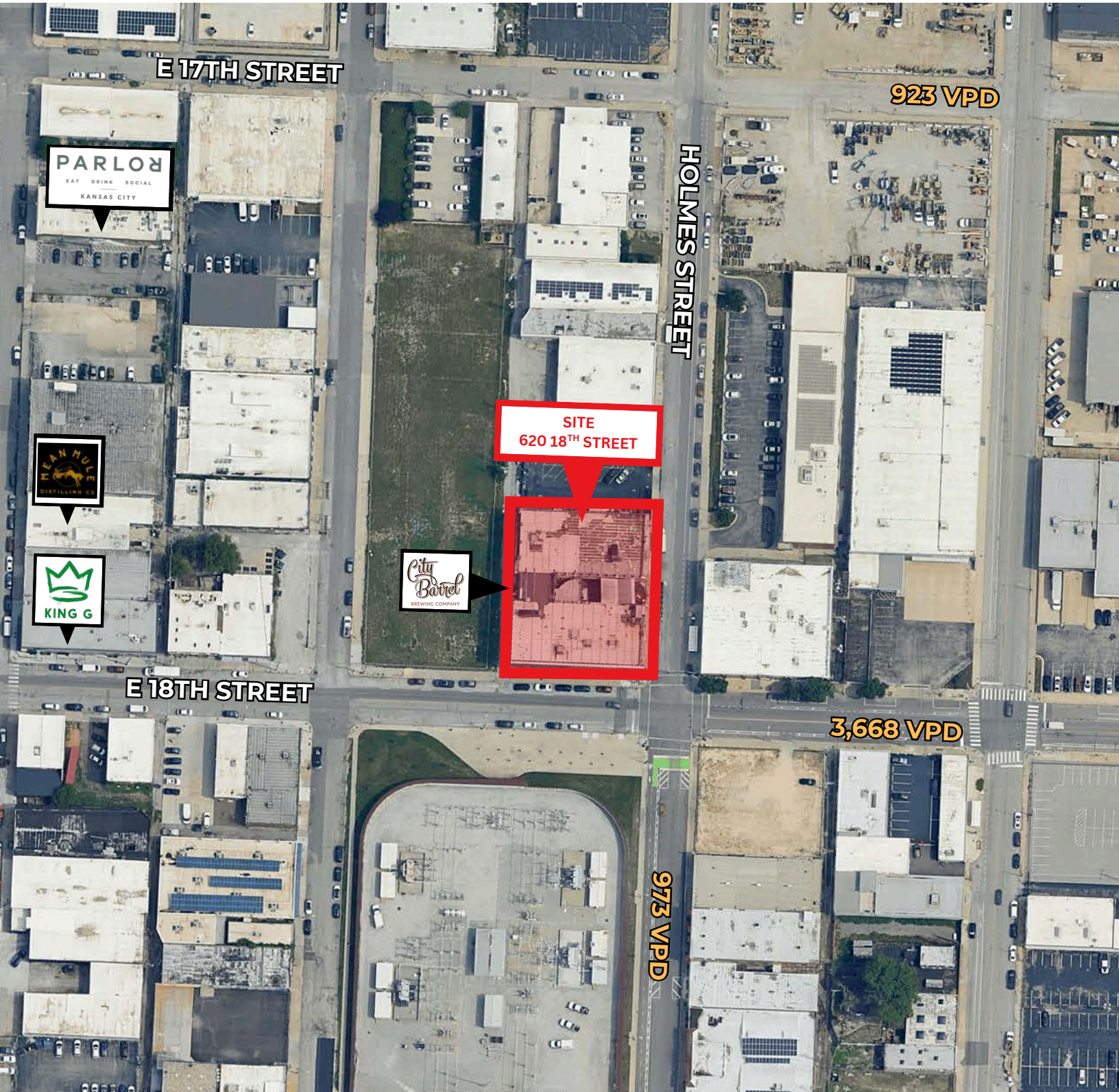
AVERAGE HOUSEHOLD INCOME	
1-MILE	\$114,466
3-MILE	\$79,984
5-MILE	\$83,820

PROPERTY AERIAL

620 E 18TH STREET

PEAK

Real Estate Partners



PARKING MAP

620 E 18TH STREET

PEAK

Real Estate Partners

