

# FOR LEASE

## RIVER MARKET OFFICE SPACE WITH GREAT PARKING



- 4,933 and 5,216 square feet available.
- Attached 40-space parking lot.
- Fitness studio with showers available for lease (2,259 square feet).
- High ceilings.
- Walking distance to restaurants, coffee shops and the Streetcar Line.
- 2nd floor deck.
- \$19.75 per square foot net of janitorial.

450 East 4th Street  
Kansas City, MO 64106



Chuck Connealy, SIOR, CCIM  
Direct: (913) 789-9020  
Cell: (913) 515-6616

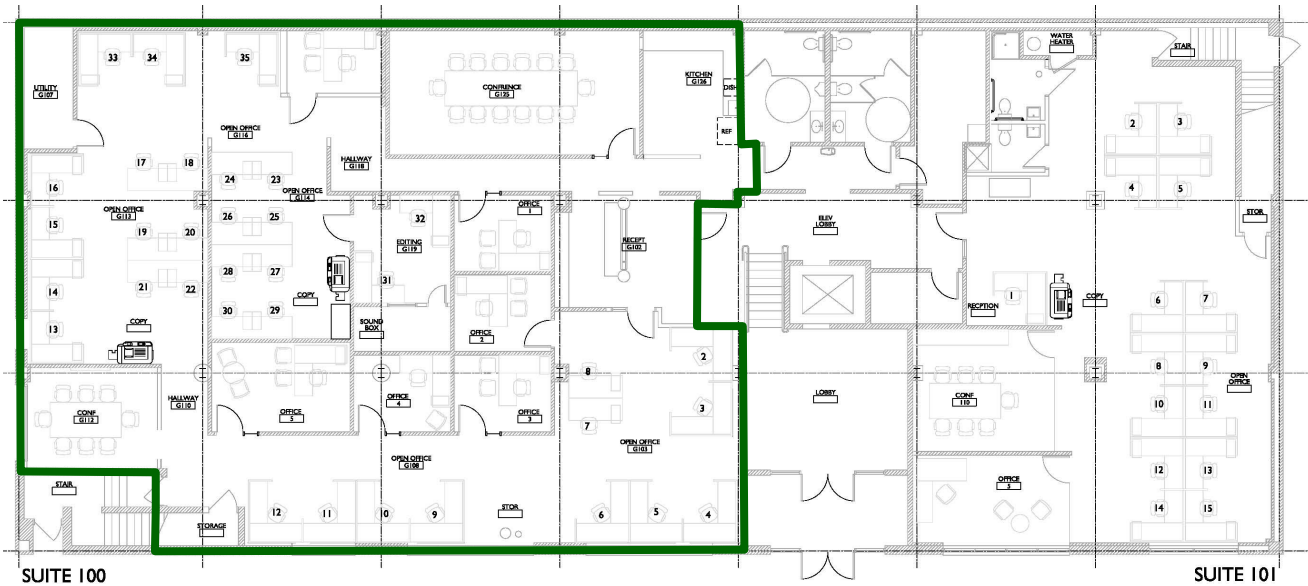
[chuck.connealy@waterfordproperty.net](mailto:chuck.connealy@waterfordproperty.net)

Information furnished regarding property is from sources deemed reliable but no warranty or representation is made as to the accuracy thereof and same is submitted subject to errors, omissions, prior sale or lease or withdrawal, without notice.

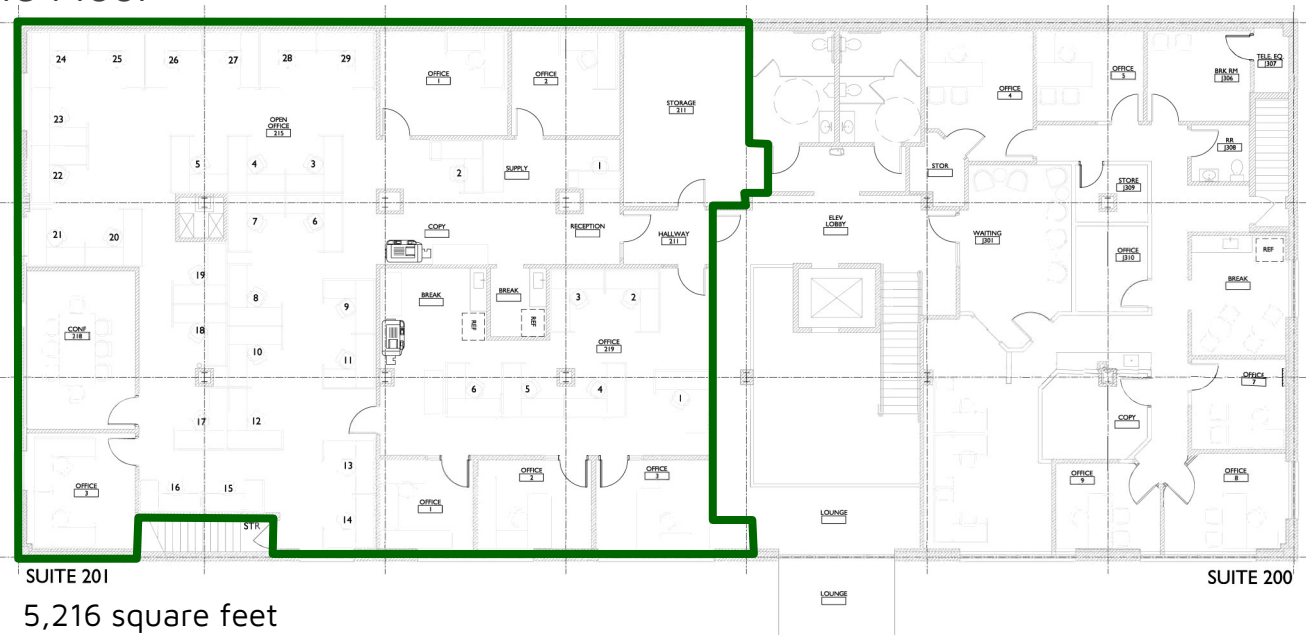
# AVAILABLE SPACE



## 1st Floor



## 2nd Floor

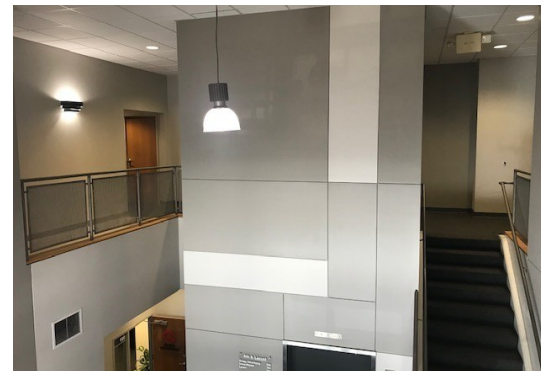
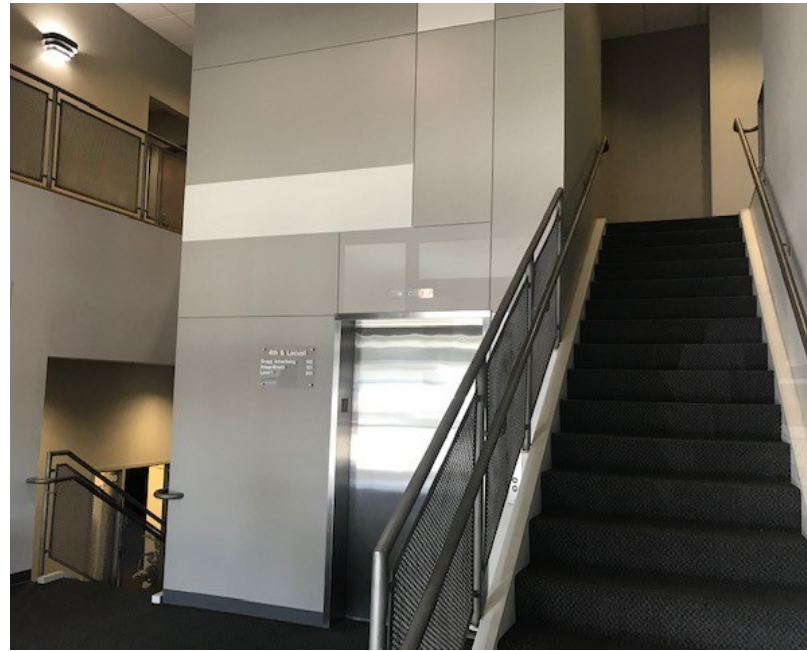


450 East 4th Street  
Kansas City, MO 64106



Chuck Connealy, SIOR, CCIM  
Direct: (913) 789-9020  
Cell: (913) 515-6616  
[chuck.connealy@waterfordproperty.net](mailto:chuck.connealy@waterfordproperty.net)

Information furnished regarding property is from sources deemed reliable but no warranty or representation is made as to the accuracy thereof and same is submitted subject to errors, omissions, prior sale or lease or withdrawal, without notice.



450 East 4th Street  
Kansas City, MO 64106



Chuck Connealy, SIOR, CCIM  
Direct: (913) 789-9020  
Cell: (913) 515-6616

[chuck.connealy@waterfordproperty.net](mailto:chuck.connealy@waterfordproperty.net)

Information furnished regarding property is from sources deemed reliable but no warranty or representation is made as to the accuracy thereof and same is submitted subject to errors, omissions, prior sale or lease or withdrawal, without notice.