

PROJECT DETAILS

2311 SKYLINE BLVD • 1.08 - 2 ACRES AVAILABLE

AVAILABLE SPACE

1.08 - 2 Acres Available

TRAFFIC COUNTS

Highly visible outparcel on Skyline Blvd 23,000 ADT

PROPERTY HIGHLIGHTS

- Multiple points of ingress/egress
- Adjacent to Discount Tire (Under construction)
- Strong sales performance in immediate market. Outback Steakhouse performs above average
- Multiple retailers and restaurants have duplicated locations in underserved market
- Cape Coral's population is growing at nearly 7% per year, making it a top 10 fastest growing city in the country

ZONING

Commercial

COUNTY

Lee County

MARKET

Cape Coral, FL



DEMOGRAPHICS

1 MILE

3 MILE

5 MILE

POPULATION

8,663

82,803

168,847

TOTAL HOUSEHOLDS

3,203

32,557

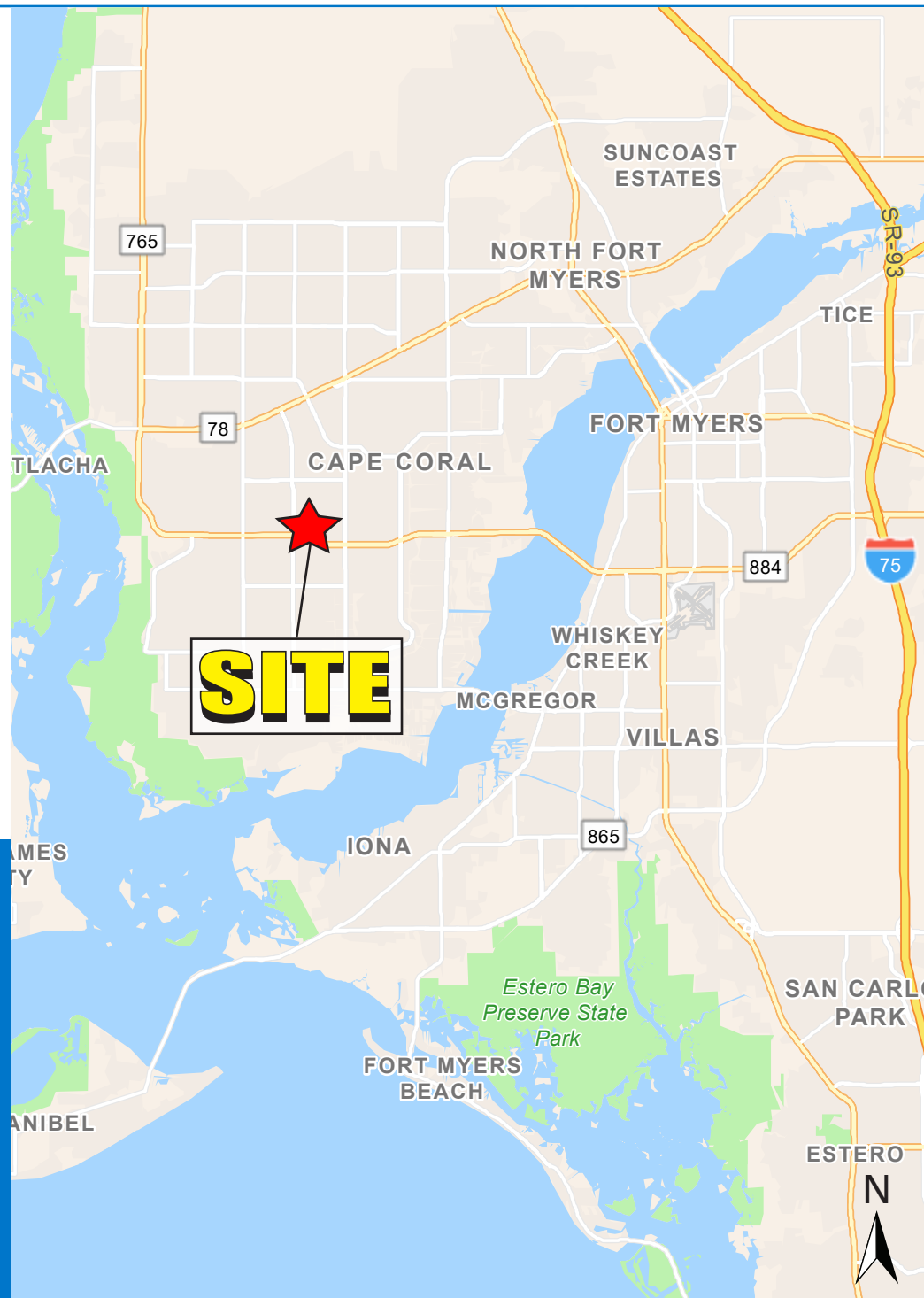
69,198

AVERAGE HH INCOME

\$89,203

\$95,781

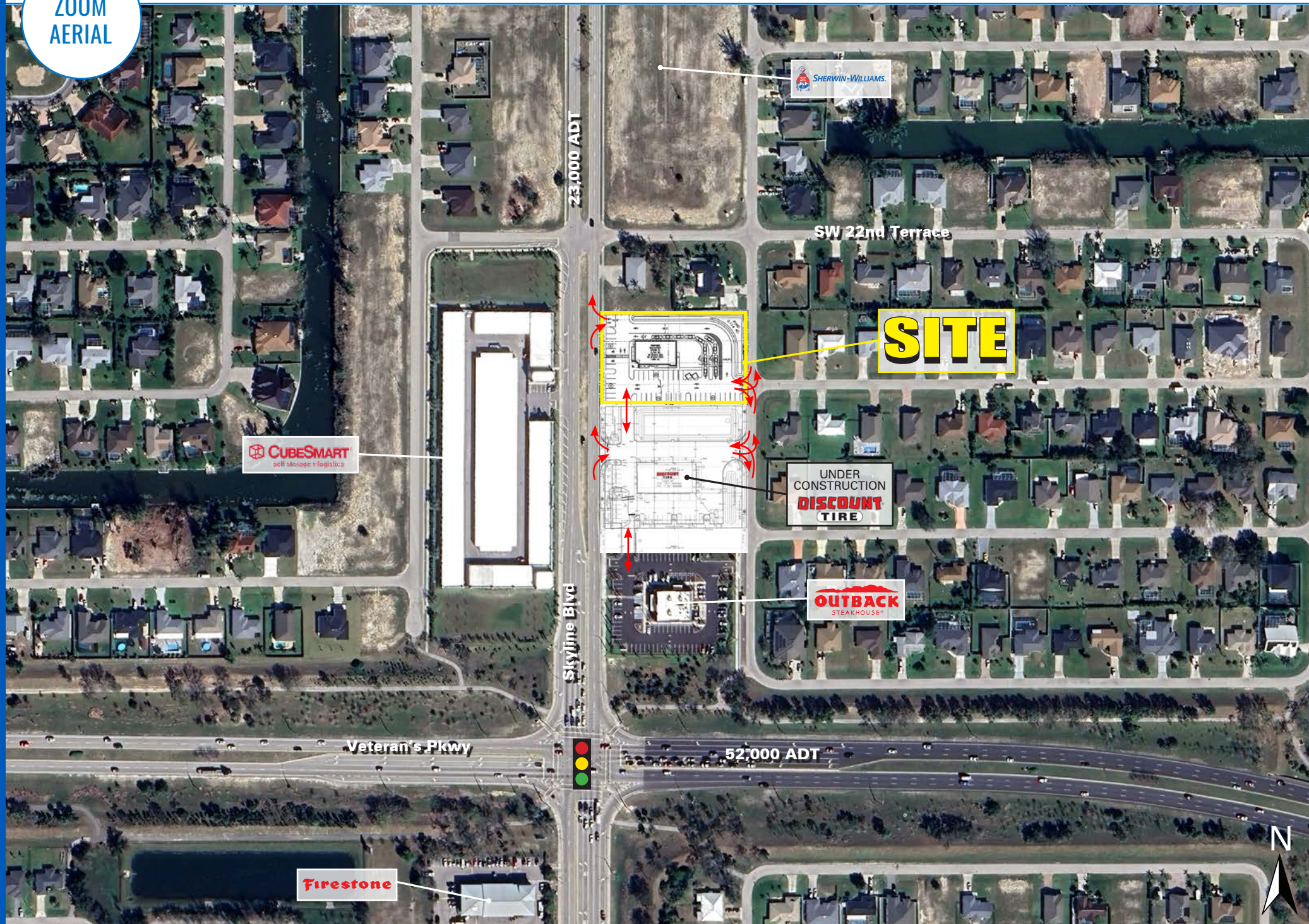
\$100,372



HIGH
AERIAL



ZOOM
AERIAL





CAPE CORAL, FL

2311 SKYLINE BLVD

1.08 - 2 ACRES AVAILABLE

COLIN WARREN

516.314.3846
CWARREN@ATLANTICRETAIL.COM

TRAVIS LANGHORST

561.424.3026
TLANGHORST@ATLANTICRETAIL.COM



**ALBANY
ATLANTA
BOSTON
CHARLOTTE
LOS ANGELES
NEW YORK CITY
ORLANDO
PITTSBURGH
WEST PALM BEACH**

HOLTEC BUILDING
1001 N US HWY ONE, SUITE 600
JUPITER, FL 33477
561.427.6699

WWW.ATLANTICRETAIL.COM

LINKEDIN.COM/COMPANY/ATLANTIC-RETAIL-PROPERTIES
 INSTAGRAM.COM/ATLANTIC_RETAIL/

