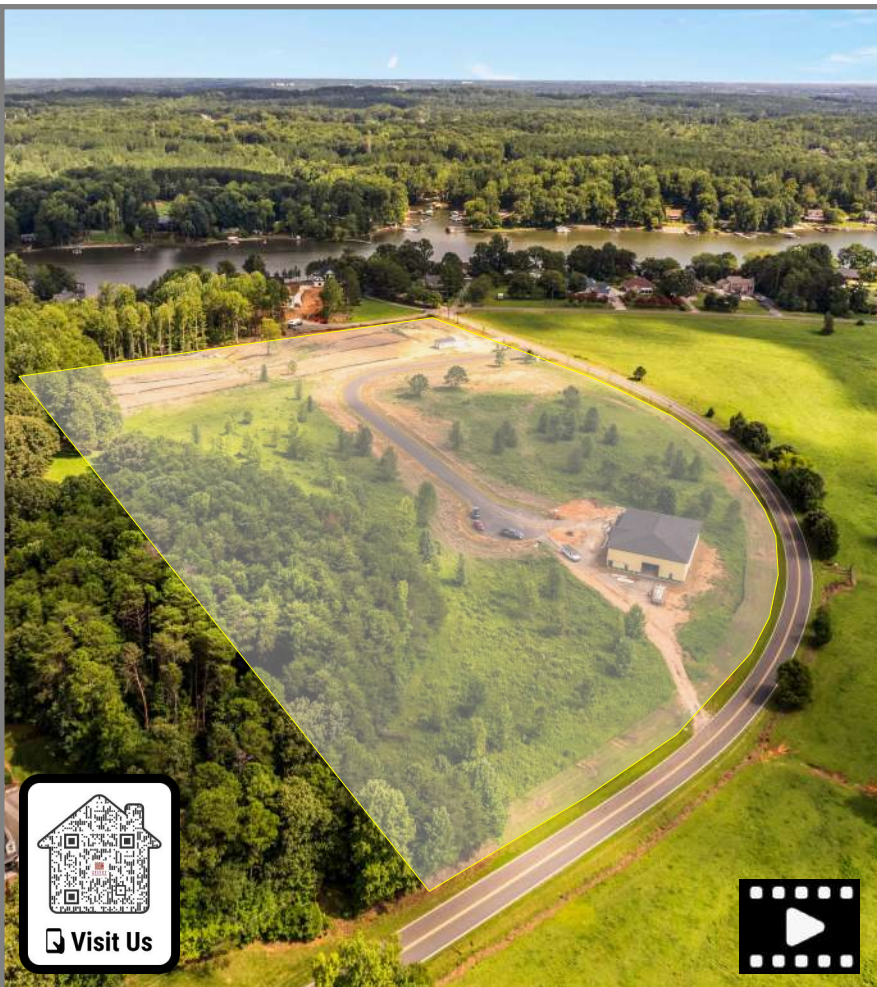


HONEYCUTT FLATS



Visit Us



Honeycutt Flats

Introducing a Unique Living Experience in the Troutman & Mooresville area. Honeycutt Flats has 15 Lots now available for purchase! This Luxury Barndominium Style Community brings an exciting concept to the Perth Road Lake Norman area. Custom built homes by Spivey Construction Co. Inc, combines the flexibility of Luxury Living and Large Premium Garage areas to accommodate motorhomes, boats, cars, ATV's & hobby shops.

Willis I. Spivey	Lewis D. Spivey
Spivey Construction Co., Inc.	Equity Commercial Properties
49 Years 1975 - 2024	Realtor/Broker
704-363-7288	704-363-1401
Willis@SpiveyInc.com	Lspivey@Equitycp.com



HONEYCUTT FLATS

LUXURY BARNDOMINIUM LIVING

Lake Norman State Park - 2 Miles



Town of Troutman - 4 Miles



Honeycutt Flats



I-77 Exit 42 - 6 Miles



The Village at Byers Creek - 8 Miles



HONEYCUTT FLATS

LUXURY BARNDOMINIUM LIVING

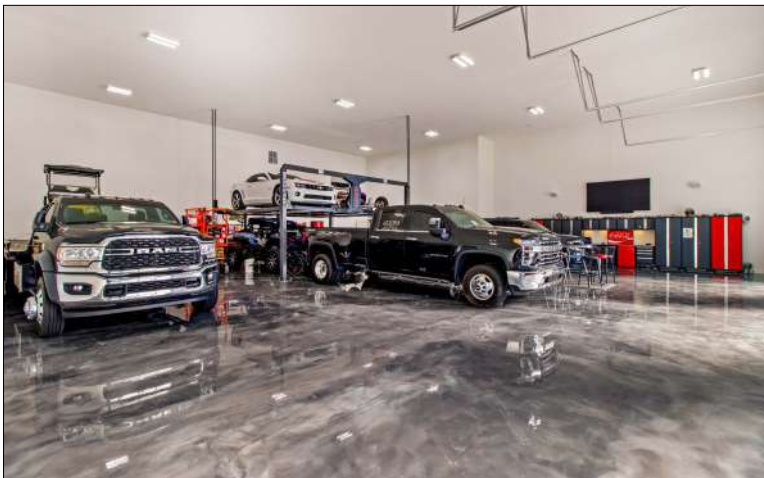
Exterior Photos



HONEYCUTT FLATS

LUXURY BARNDOMINIUM LIVING

Interior Photos



HONEYCUTT FLATS

LUXURY BARNDOMINIUM LIVING

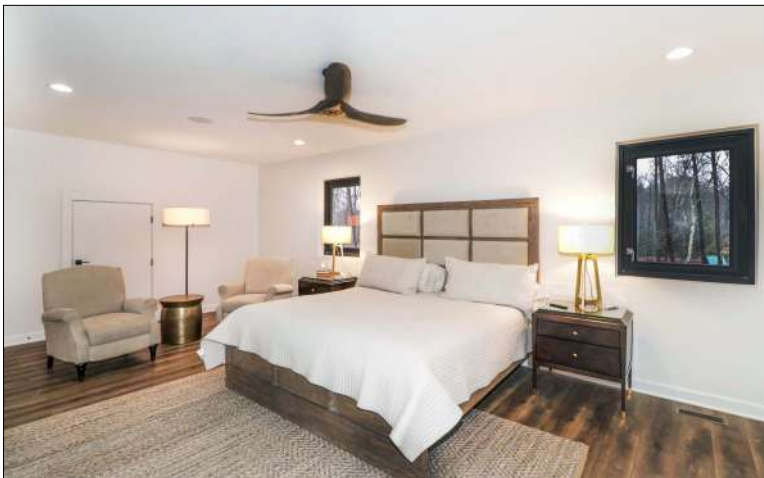
Interior Photos



HONEYCUTT FLATS

LUXURY BARNDOMINIUM LIVING

Interior Photos

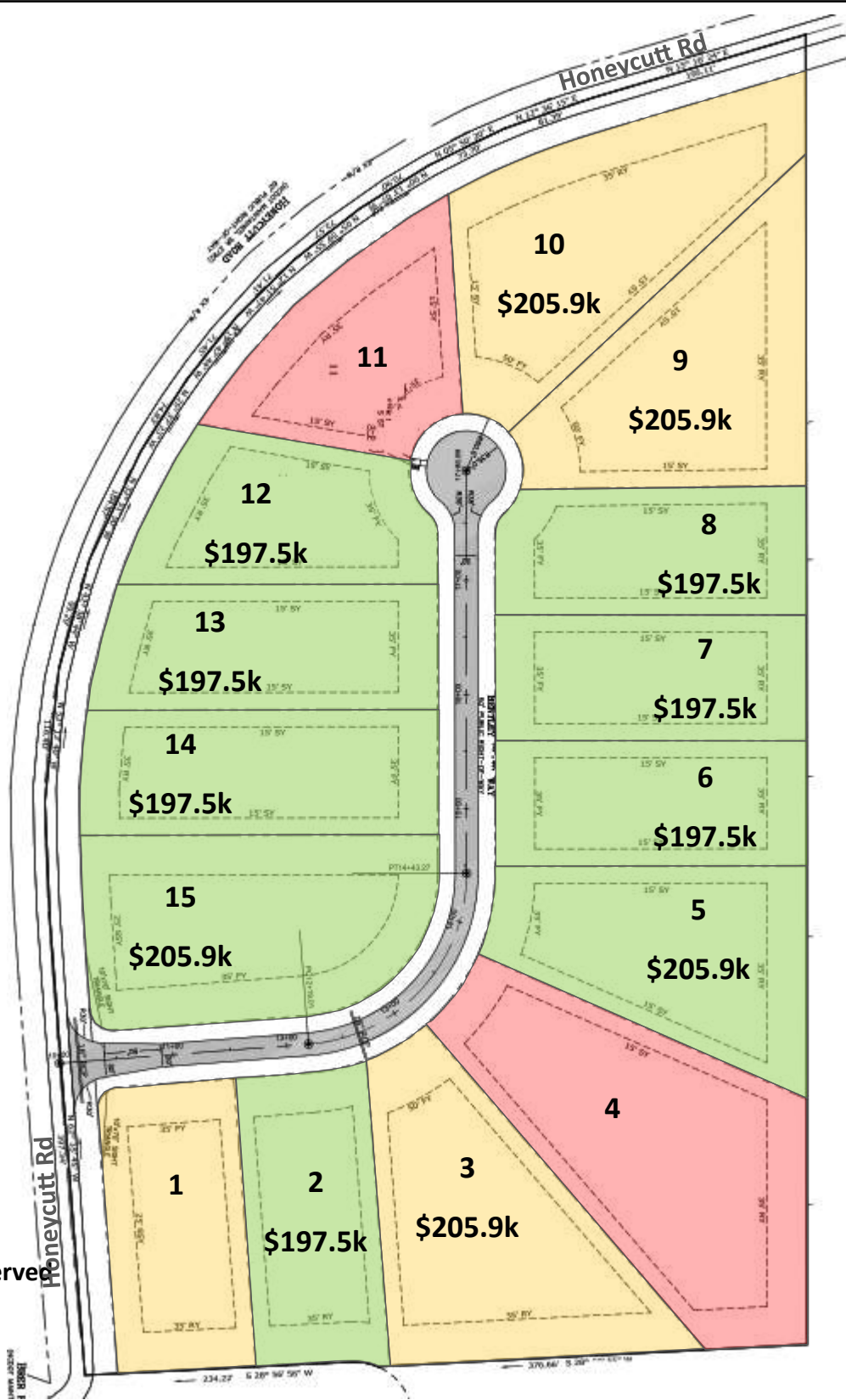


HONEYCUTT FLATS

LUXURY BARNDOMINIUM LIVING

Site Plan & Lot Information—Please Call or Email to Confirm Lot Status

Lot #	Acres
1	0.70
2	0.69
3	1.11
4	1.39
5	0.91
6	0.69
7	0.69
8	0.69
9	0.98
10	1.18
11	0.69
12	0.69
13	0.74
14	0.79
15	1.08

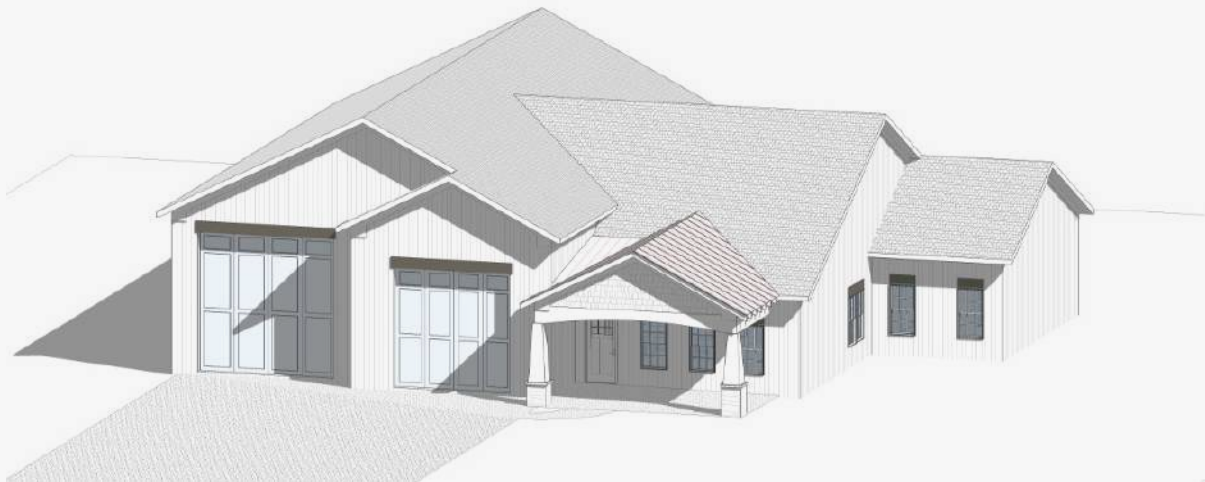
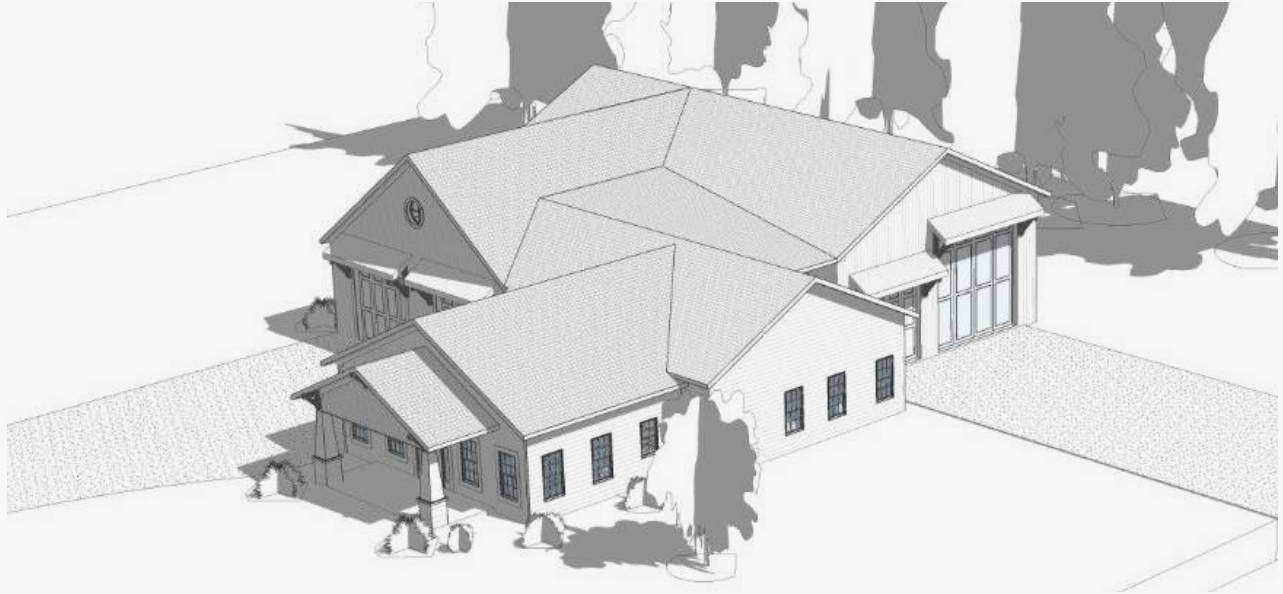


Available
 Pending/Reserve
 Sold

HONEYCUTT FLATS

LUXURY BARNDOMINIUM LIVING

Customizable Building Examples



HONEYCUTT FLATS

LUXURY BARNDOMINIUM LIVING

Building & Floor Plan Example

