



GREENFIELD FARMS

GREENFIELD FARMS

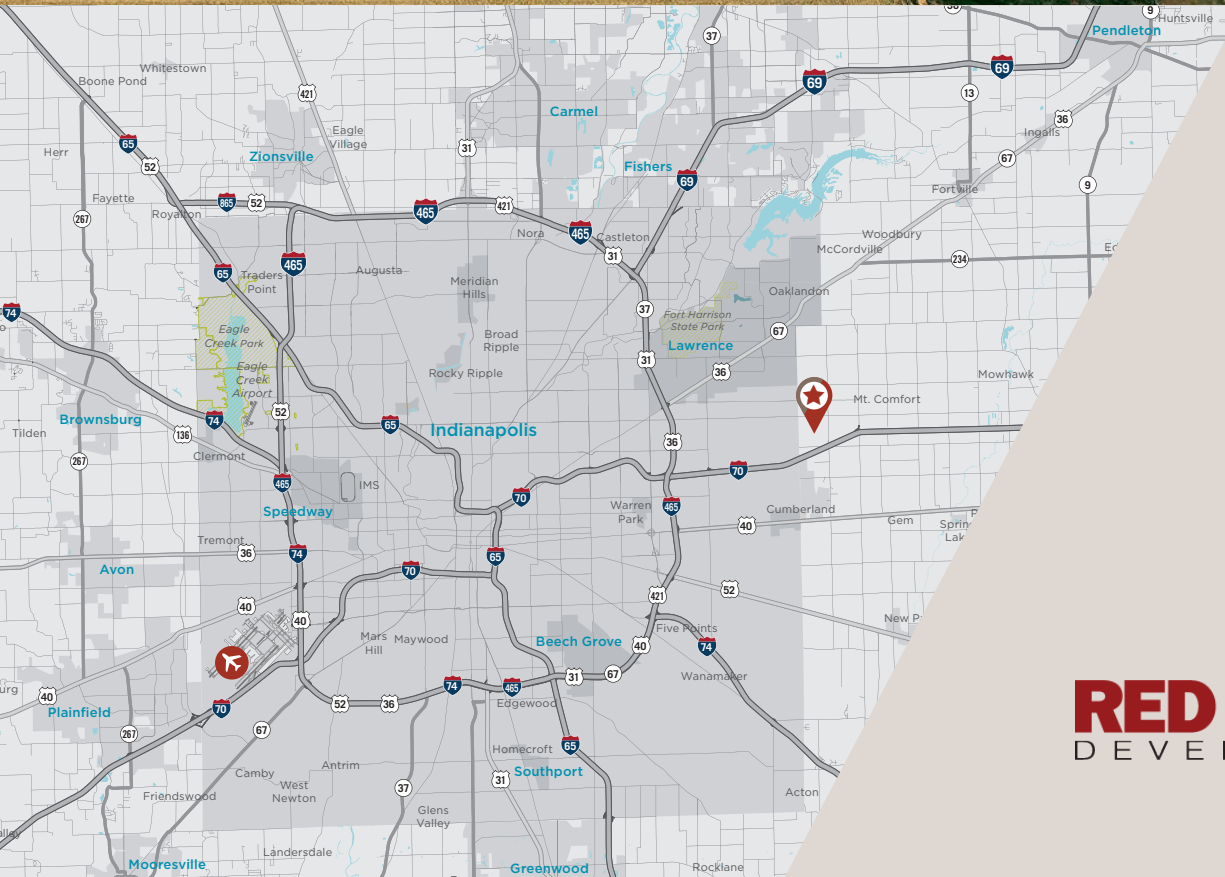
442,624 SF Build-to-Suit

N. Buck Creek Road | Greenfield, Indiana 46140

BUILD-TO-SUIT SITES

442,624 SF

737,135 SF



RED ROCK
DEVELOPMENTS

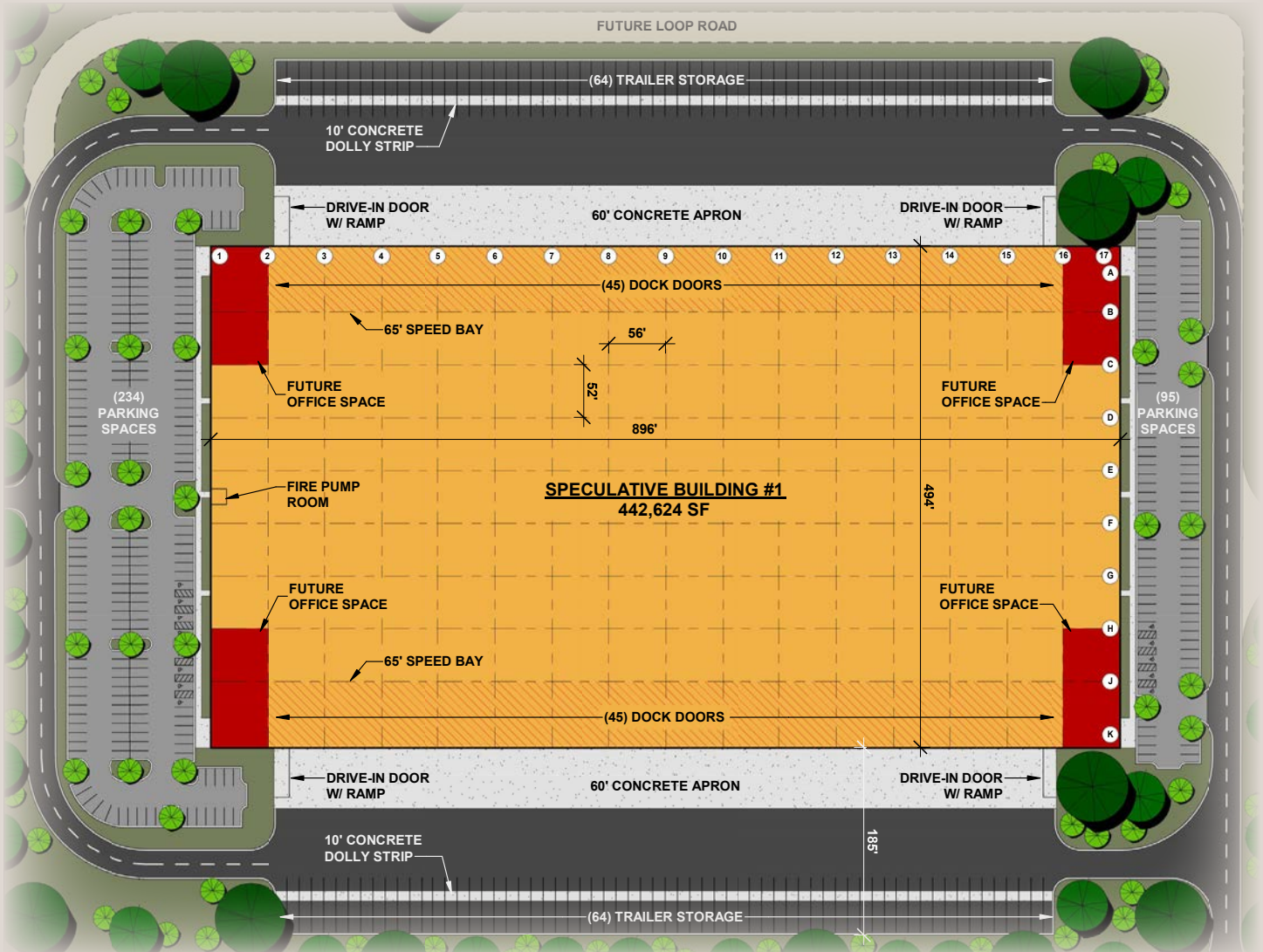


GREENFIELD FARMS

GREENFIELD FARMS

442,624 SF Build-to-Suit

N. Buck Creek Road | Greenfield, Indiana 46140



BUILD-TO-SUIT SPECIFICATIONS

Building size:	442,624 sf (494' x 896')
Configuration:	Cross dock
Column spacing:	52' x 56' bays 65' speed bays
Truck court:	Up to 200' deep
Dock doors:	90 total
Drive-in doors:	4 with ramps
Auto parking:	329 spaces
Trailer storage:	128 (12' x 60') total

UTILITY PROVIDERS



ELECTRIC
Duke Energy



GAS
CenterPoint Energy



WATER
Citizens Energy



SEWER
Western Hancock Utilities



FIBER
AT&T



GREENFIELD FARMS

GREENFIELD FARMS

442,624 SF Build-to-Suit

N. Buck Creek Road | Greenfield, Indiana 46140

NOTABLE TENANTS IN THE IMMEDIATE AREA

amazon.com

Smithfield

Yusen Logistics

TSUDA

IFCO



Walmart

2.5 MILES TO
INDIANAPOLIS
REGIONAL AIRPORT

MT COMFORT ROAD

NORTH 700 WEST

1.95 MILES TO I-70

1.25 MILES TO I-70



N 700 W truck path

N. Buck Creek Rd. truck path

W. NEW RD.

BUILD-TO-SUIT
737,135 SF

BUILD-TO-SUIT
442,624 SF

future loop road

future loop road

NORTH 800 WEST

E. 30th ST.

INDIANAPOLIS-MARION COUNTY



KEY DISTANCES



Indianapolis International Airport:
27 miles



I-70 East & West
Interchange: 1.95 miles



I-74 South:
14 miles



FedEx Hub:
23 miles



I-65 North & South
Interchange: 13 miles



I-465 North & South
Interchange: 8 miles



Indianapolis Intermodal
Facility (container service):
17 miles



I-69 North:
13 miles

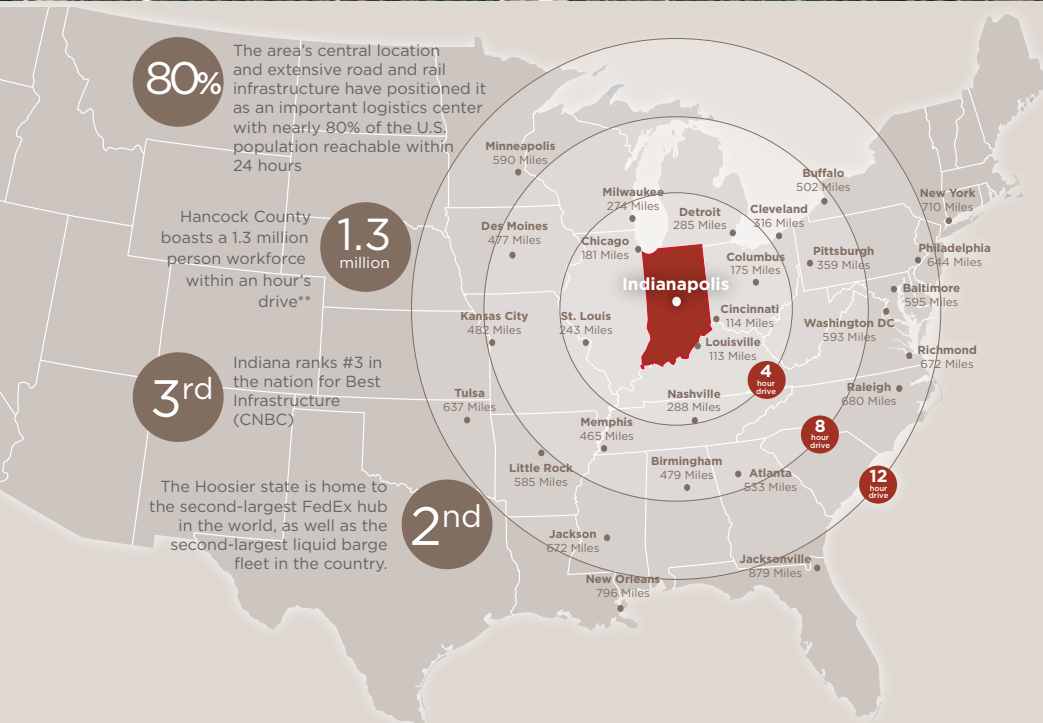


GREENFIELD FARMS

GREENFIELD FARMS

442,624 SF Build-to-Suit

N. Buck Creek Road | Greenfield, Indiana 46140



Michael W.M. Weishaar, SIOR
Cushman & Wakefield
+1 317 639 0494
michael.weishaar@cushwake.com

Grant M. Lindley, SIOR, CCIM
Cushman & Wakefield
+1 317 639 0446
grant.lindley@cushwake.com



Leah B. Bailey, SIOR
Red Rock Developments
+1 704 619 3825
lbailey@redrockdevelopments.com