

TWO SIXTY FIVE LOGISTICS PARK

13620 NORTHEAST PARK DR
LOUISVILLE, KY 40245

98,800± SF FOR SUBLEASE



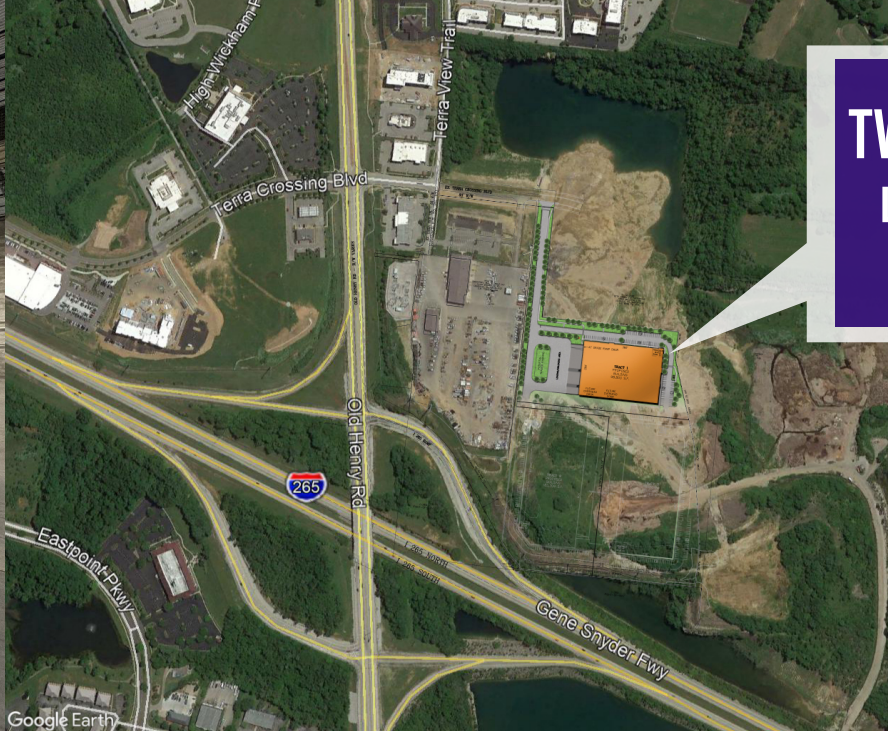
BLAKE SCINTA

First Vice President
+1 502 412 7620
blake.scinta@cbre.com

ALEX P. GROVE

Senior Associate
+1 502 412 7655
alex.grove@cbre.com

CBRE



**TWO SIXTY FIVE
LOGISTICS PARK
BUILDING 1**

DOCK DOORS
(9) 9' X 10' (expandable to 14)

DRIVE-IN DOOR
(1) 12' X 14'

COLUMN SPACING
50' X 50'

POWER
2,000 Amp

FLOOR THICKNESS
6" Unreinforced concrete

ROOF SPECS
45 mil TPO with R-20 insulation

LIGHTING
LED

INTERSTATE ACCESS
Immediate access to I-265 and just minutes from I-71 & I-64

PROPERTY FEATURES

LAND AREA
24.1 acres

AVAILABLE SF
98,800± SF

CLEAR HEIGHT
32'

SPRINKLER SYSTEM
ESFR

VEHICLE PARKING
129 SPACES

AVAILABILITY

Building #1: 98,800 SF

SITE AREA

24.1 Acres

ASKING RENTAL RATE

\$7.50/SF/YR/NNN

ZONING

M3

0.4 Miles to
Interstate 265



2.5 Miles to Ford
Kentucky Truck Plant



3.7 Miles to
Interstate 64



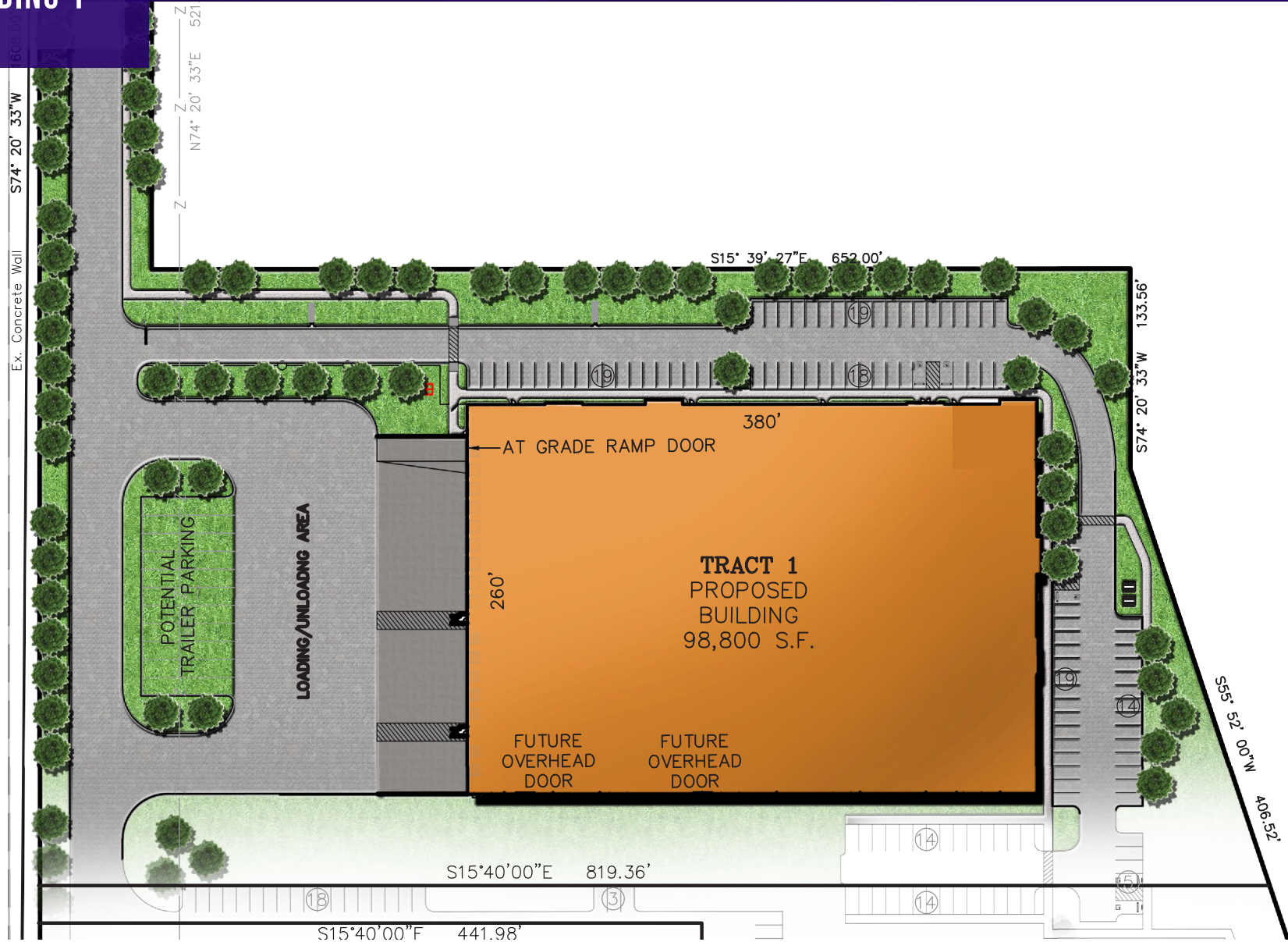
6.3 Miles to
Interstate 71



CBRE

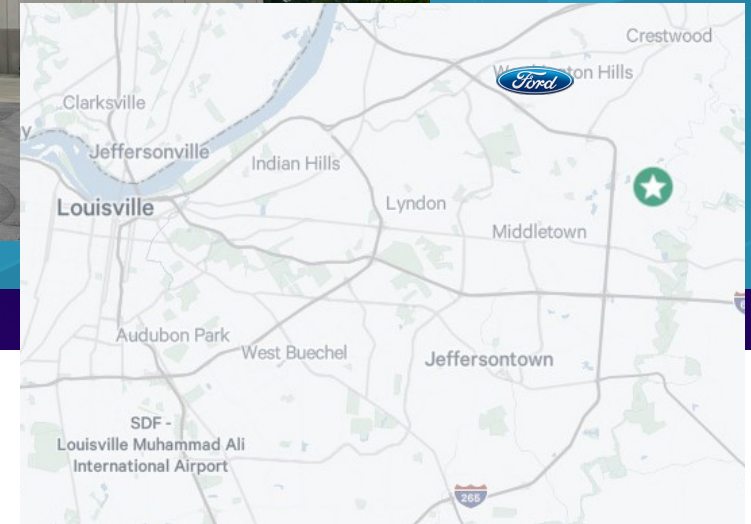
TWO SIXTY FIVE LOGISTICS PARK BUILDING 1

SITE PLAN



TWO SIXTY FIVE LOGISTICS PARK

13620 NORTHEAST PARK DR
LOUISVILLE, KY 40245



CONTACTS:

BLAKE SCINTA

First Vice President
+1 502 412 7620
blake.scinta@cbre.com

ALEX P. GROVE

Senior Associate
+1 502 412 7655
alex.grove@cbre.com

CBRE

© 2025 CBRE, Inc. All rights reserved. This information has been obtained from sources believed reliable, but has not been verified for accuracy or completeness. Any projections, opinions, or estimates are subject to uncertainty. The information may not represent the current or future performance of the property. You and your advisors should conduct a careful, independent investigation of the property and verify all information. Any reliance on this information is solely at your own risk. CBRE and the CBRE logo are service marks of CBRE, Inc. and/or its affiliated or related companies in the United States and other countries. All other marks displayed on this document are the property of their respective owners. Photos herein are the property of their respective owners and use of these images without the express written consent of the owner is prohibited. PMStudio_Sep2018