



For Lease - 1071 Post Road East Westport – The Palladio

## About the Palladio and its Location:

Central Post Road East location, close to I-95, restaurants, shopping and Starbucks. Key Bank is on the ground floor. 1071 Post Road East is a 10,000 SF two-story, elevator, corporate and professional office building.

Park like setting and beautiful views. Very large operable windows. Handicap accessible. Covered and surface parking available.

All information from sources deemed reliable and is submitted subject to errors, omissions, change of price, rental, prior sale and withdrawal without notice.



## Office Suites Available:

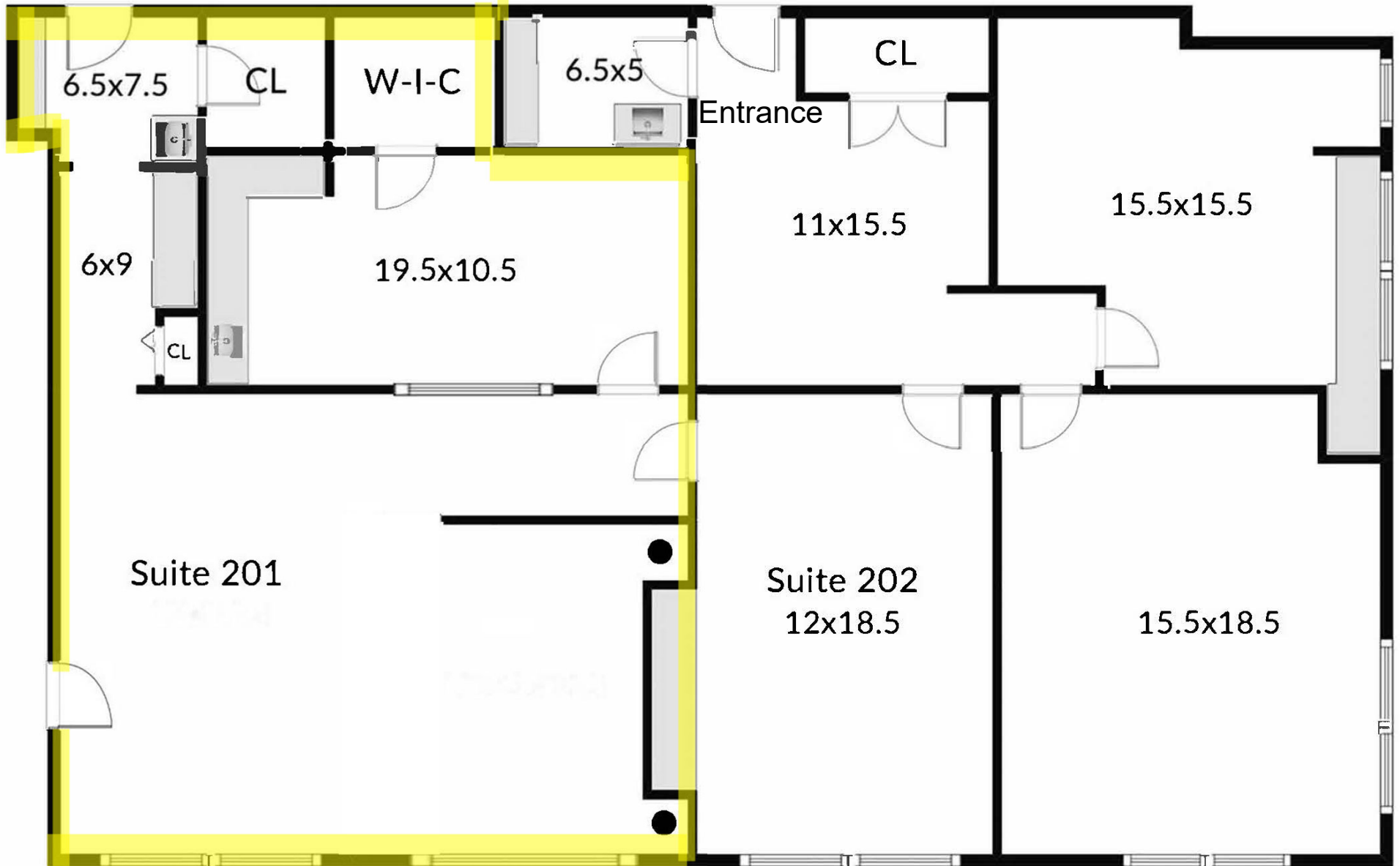
Suite 201 – 1,141 SF

Rent: \$33/SF plus \$3/SF for Electric

All information from sources deemed reliable and is submitted subject to errors, omissions, change of price, rental, prior sale and withdrawal without notice.







**1071 Post Road East**  
**- The Palladio -**  
**Suite 201**

All information from sources deemed reliable and is submitted subject to errors, omissions, change of price, rental, prior sale and withdrawal without notice.



Suite 201

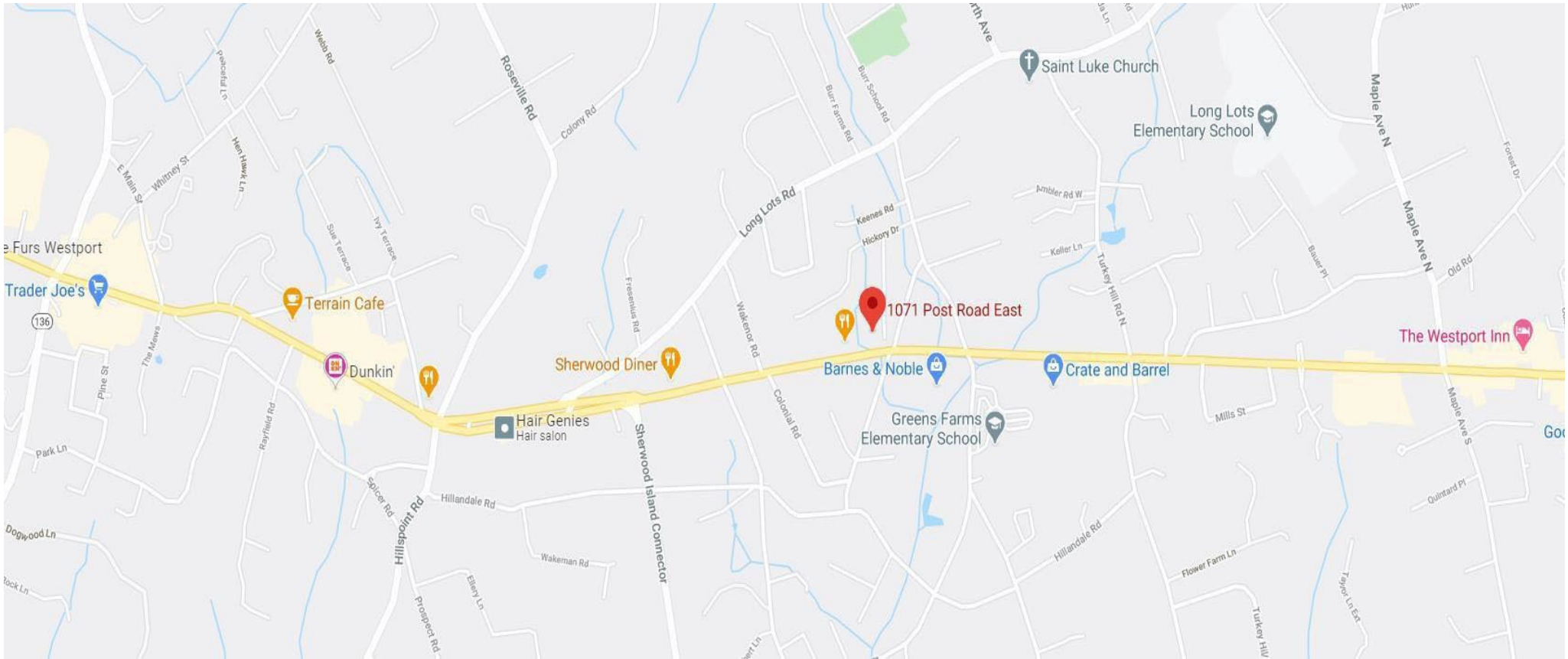
All information from sources deemed reliable and is submitted subject to errors, omissions, change of price, rental, prior sale and withdrawal without notice.





Suite 201

All information from sources deemed reliable and is submitted subject to errors, omissions, change of price, rental, prior sale and withdrawal without notice.



All information from sources deemed reliable and is submitted subject to errors, omissions, change of price, rental, prior sale and withdrawal without notice.

For additional information, please contact:

Franco Fellah  
Executive Vice President

HK Group II, Inc.  
Commercial Real Estate  
49 Riverside Avenue  
Westport, CT 06880

c: 203.981.3476  
e: [ffellah@hkgrp.com](mailto:ffellah@hkgrp.com)

[www.hkgrp.com](http://www.hkgrp.com)

