

FOR LEASE
OFFICE PROPERTY



4170 DOUGLAS BLVD
GRANITE BAY, CA 95746

ASKING RENT:

\$2.15 FS

PROPERTY HIGHLIGHTS:

- Main entry off of the building lobby
- Nice glass line allowing for natural light in the space
- Attractive, conventional layout
- Glass conference room
- Sidelights for the private offices
- Move In ready

CONTACT INFORMATION

LISA STANLEY

Executive Director

+1 916 769 3141

lisa.stanley@cushwake.com

CA License 01340056

CHRIS SCHWARZE

Executive Director

+1 916 288 4803

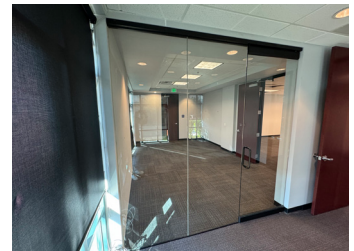
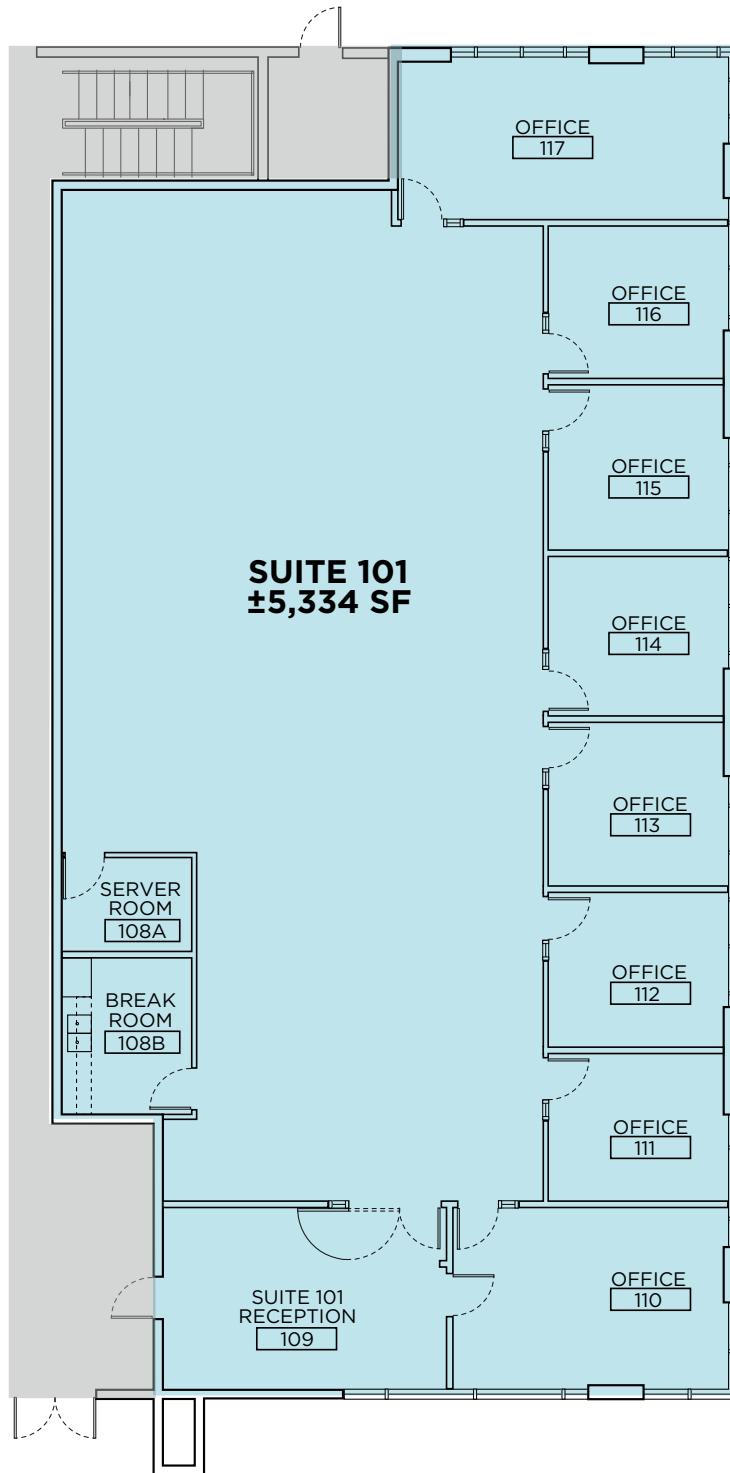
chris.schwarze@cushwake.com

CA License 01291261



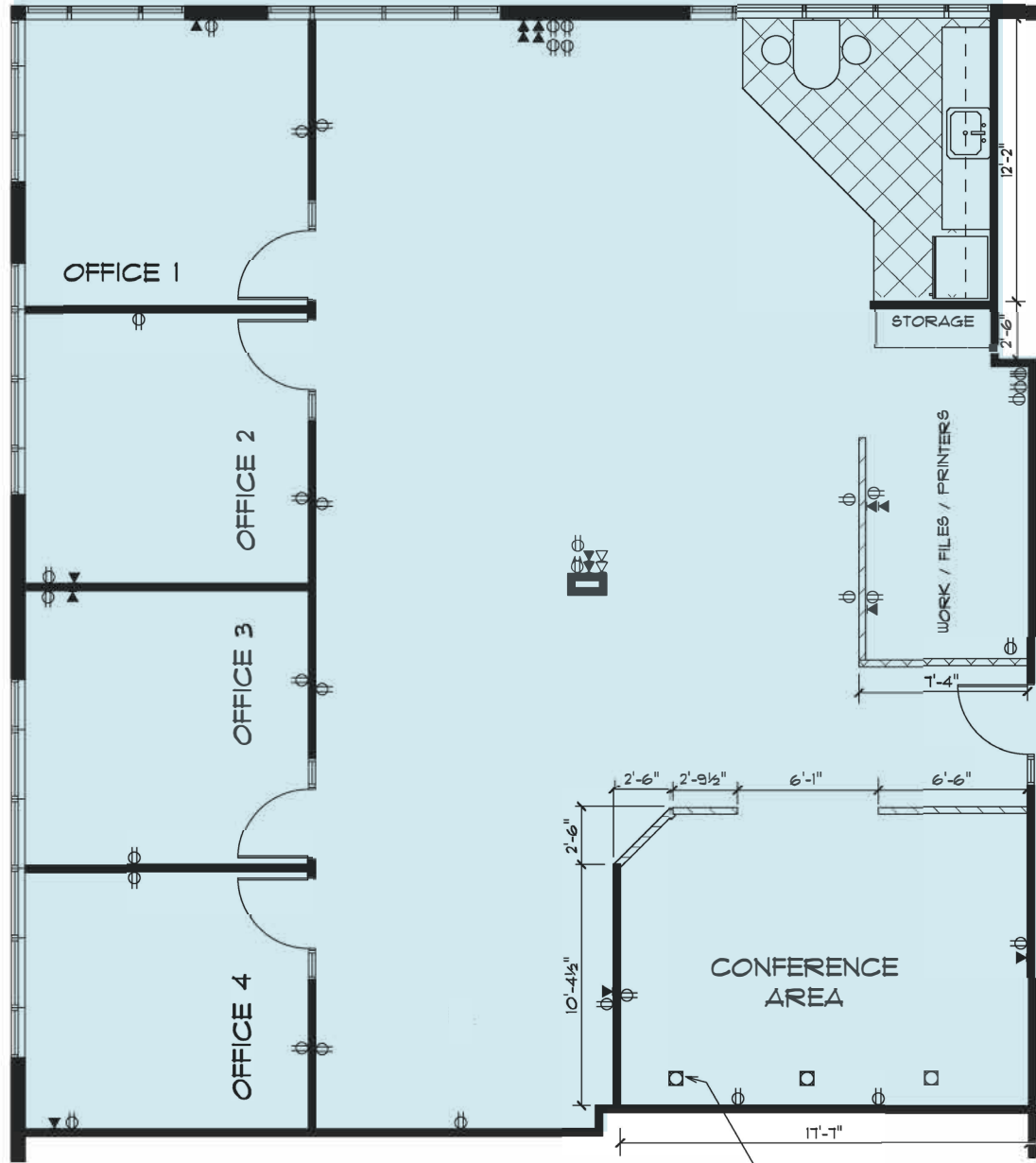
FLOOR PLAN

SUITE 101 - ±5,334 SF
DIVISIBLE TO ±2,500 RSF



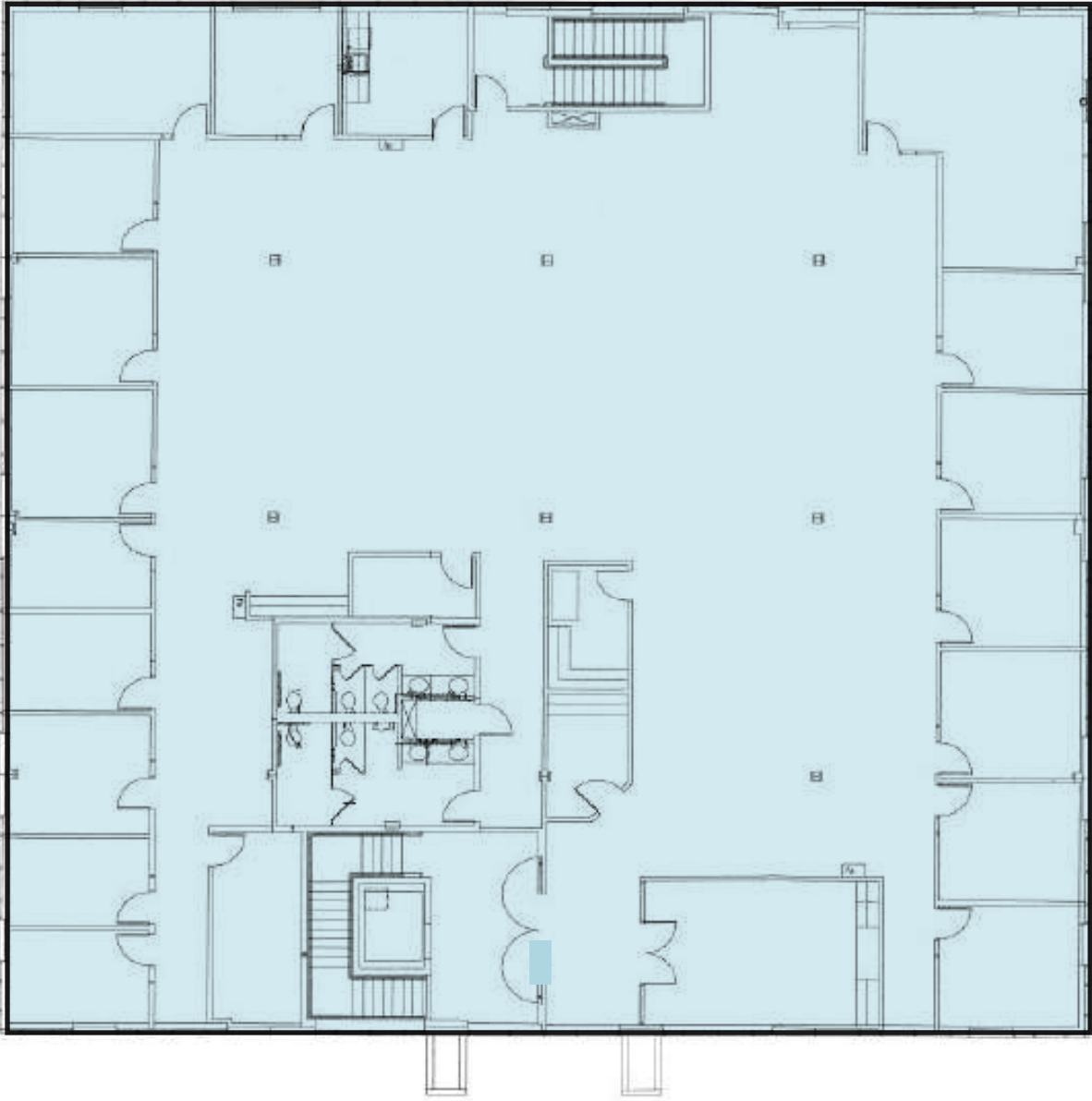
FLOOR PLAN

SUITE 150 - ±2,471 SF



FLOOR PLAN

SUITE 200 - ±10,934 SF



LOCATION/
AMENITIES MAP



CONTACT INFORMATION

LISA STANLEY

Executive Director

+1 916 769 3141

lisa.stanley@cushwake.com

CA License 01340056

CHRIS SCHWARZE

Executive Director

+1 916 288 4803

chris.schwarze@cushwake.com

CA License 01291261

400 Capitol Mall
Suite 1800
Sacramento, CA 95814
+1 916 403 1815
cushmanwakefield.ca

