



## 710 Oakleaf Office Ln

Memphis, Tennessee 38117

### Property Features

- 6,284 SF +/- Office Building For Lease or Sale
- 3,142 SF up to 6,284 SF
- \$625,000 Asking price
- Lease Rate: \$20.00 MG
- 2 story building with elevator access between floors
- Back-up generator
- Ideal for owner-user or investor
- Secure access via keycard at all entrances and ample parking for employees and visitors
- Located in walking distance of a variety of restaurants and shopping
- Situated in the heart of East Memphis



For more information:

**Brian Califf, CCIM**

901 526 3100 • bcaliff@saigcompany.com

NO WARRANTY OR REPRESENTATION, EXPRESS OR IMPLIED, IS MADE AS TO THE ACCURACY OF THE INFORMATION CONTAINED HEREIN, AND THE SAME IS SUBMITTED SUBJECT TO ERRORS, OMISSIONS, CHANGE OF PRICE, RENTAL OR OTHER CONDITIONS, PRIOR SALE, LEASE OR FINANCING, OR WITHDRAWAL WITHOUT NOTICE, AND OF ANY SPECIAL LISTING CONDITIONS IMPOSED BY OUR PRINCIPALS NO WARRANTIES OR REPRESENTATIONS ARE MADE AS TO THE CONDITION OF THE PROPERTY OR ANY HAZARDS CONTAINED THEREIN ARE ANY TO BE IMPLIED.

NAI Saig Company

6263 Poplar Avenue Suite 150, Memphis, TN 38119

901 526 3100

[saigcompany.com](http://saigcompany.com)



For Sale  
**Office**

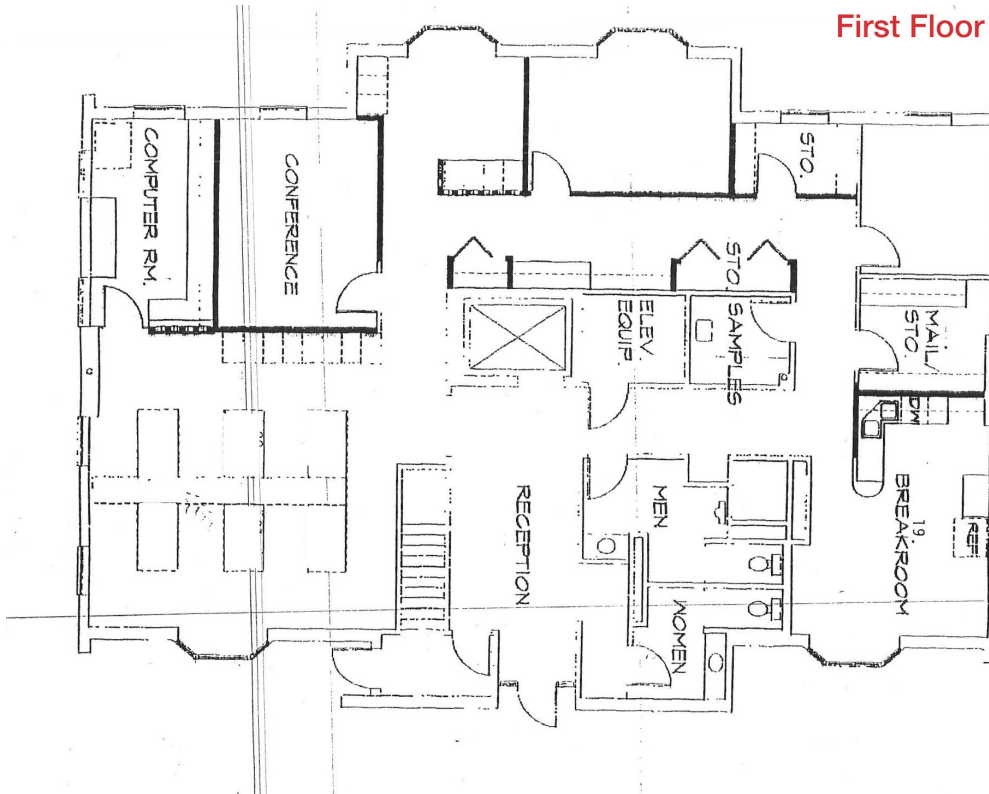




For Sale

Office

First Floor



Second Floor

