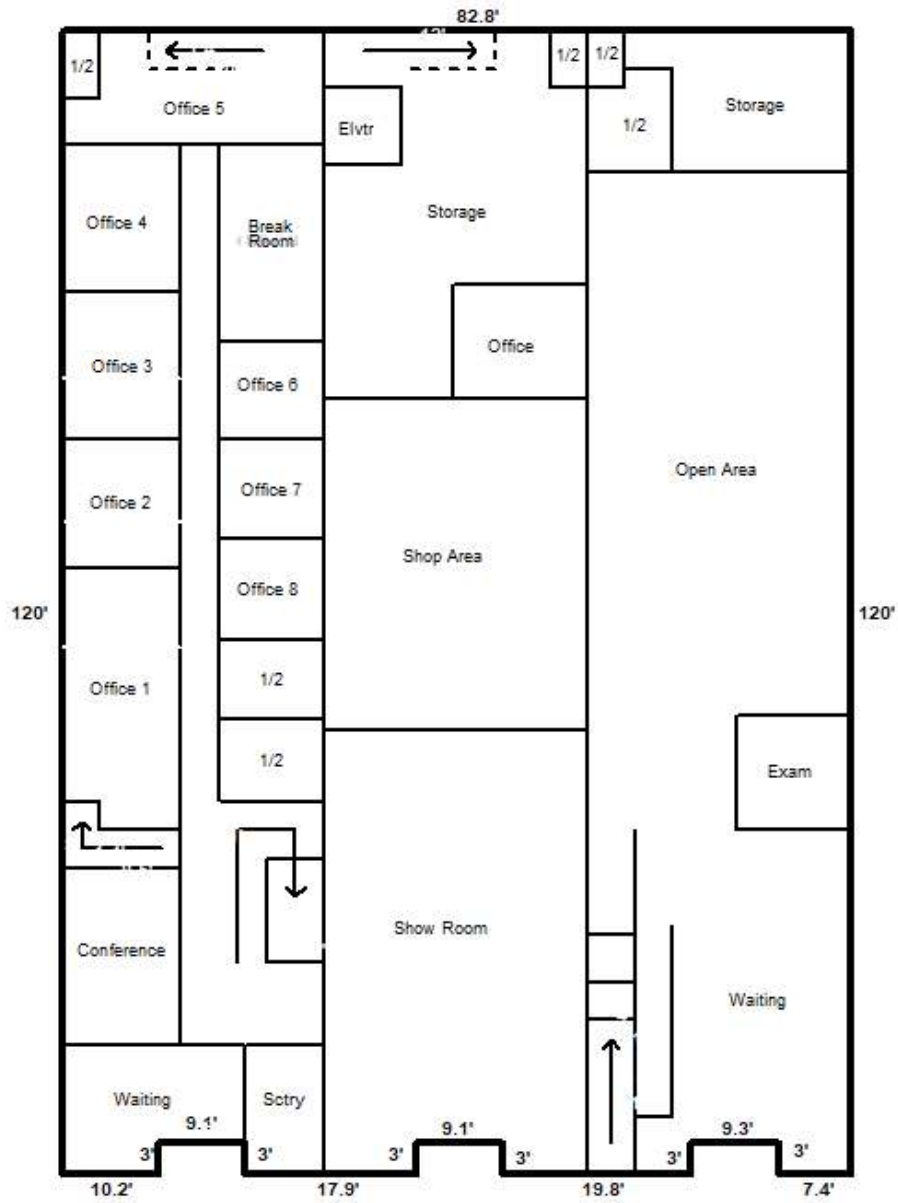


421 - 427 2 <sup>nd</sup> AVENUE, SW CULLMAN, ALABAMA	
BASEMENT	8,942 Square Feet
BASEMENT MEZZANINE	759 Square Feet
GROUND LEVEL	9,854 Square Feet
2 <sup>ND</sup> FLOOR	2,981 Square Feet
<b>TOTAL ABOVE GRADE BUILDING AREA<sup>1</sup></b>	<b>12,835 Square Feet</b>
ROOM	DIMENSIONS
<b>423 - FIRST FLOOR</b>	
WAITING ROOM	17' x 36'
EXAM ROOM	11.5' x 12'
OPEN AREA	26.5' x 59.5'
STORAGE	15' x 17.5'
½ BATH	8' x 9'
½ BATH	4' x 6'
<b>425 - FIRST FLOOR</b>	
SHOW ROOM	26.5' x 46.5'
SHOP AREA	26.5' x 35'
OFFICE	12' x 13.5'
½ BATH	4' x 6'
STORAGE ROOM	26.5' x 21.5'
<b>427 - FIRST FLOOR</b>	
WAITING ROOM	19' x 13.5'
SECRETARY/RECEPTION	7.5' x 13.5'
CONFERENCE	12.5' x 18'
OFFICE 1	12.5' x 19.5'
OFFICE 2	12.5' x 13'
OFFICE 3 & 4	12.5' x 15'
OFFICE 5	22.5' x 12'
½ BATH 1	7' x 3.5'
BREAK ROOM	8.5' x 19.5'
OFFICE 6, 7 & 8	8.5' x 10'
½ BATH 2 & 3	8.5' x 8'
<b>425 &amp; 427 - SECOND FLOOR</b>	
OFFICE 1 & 3	13.5' x 14'
OFFICE 2 & 4	12.5' x 14'
OFFICE 5	13.5' x 13.5'
½ BATH	8' x 5'
BREAK ROOM	8' x 8'

<sup>1</sup> Based on our measurements, the building encroaches by 0.8 feet on the adjoining site to the north. The total building area that has been reported includes the area that is encroaching on the adjoining property. We recommend an attorney be consulted to determine the legality of the encroachment.

OFFICE 6	8' x 14'
OFFICE 7	8.5' x 14'
<b>421 - SECOND FLOOR</b>	
LIVING ROOM	16' x 14'
KITCHEN	10' x 14'
BEDROOM	10' x 11.5'
BATH	8.5' x 8'

FIRST FLOOR



Second Floor

