

**555 N. NEW BALLAS ROAD**  
CREVE COEUR, MO 63141



**Remedy**  
Medical Properties, Inc.

## Contact Information

**Matt Hirsch**  
(314) 646-3305  
mhirsch@mdrea.com

**Michael Cozad**  
(314) 646-3307  
mcozad@cozadgroup.com



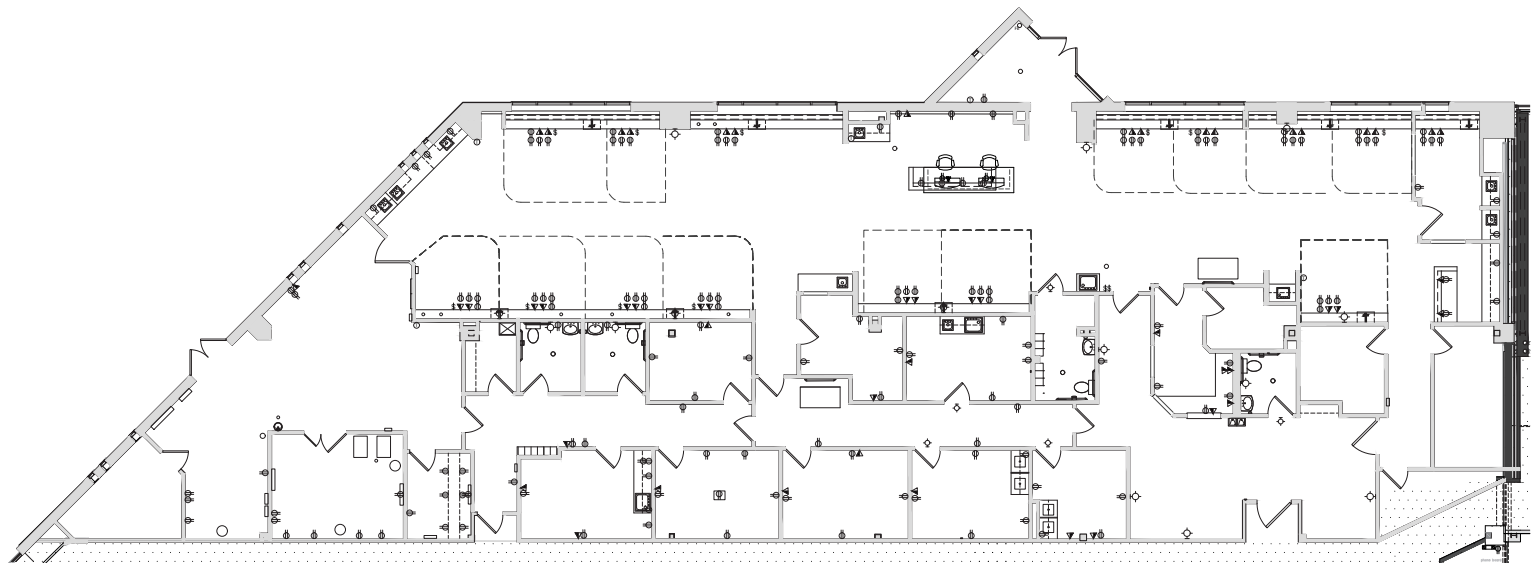
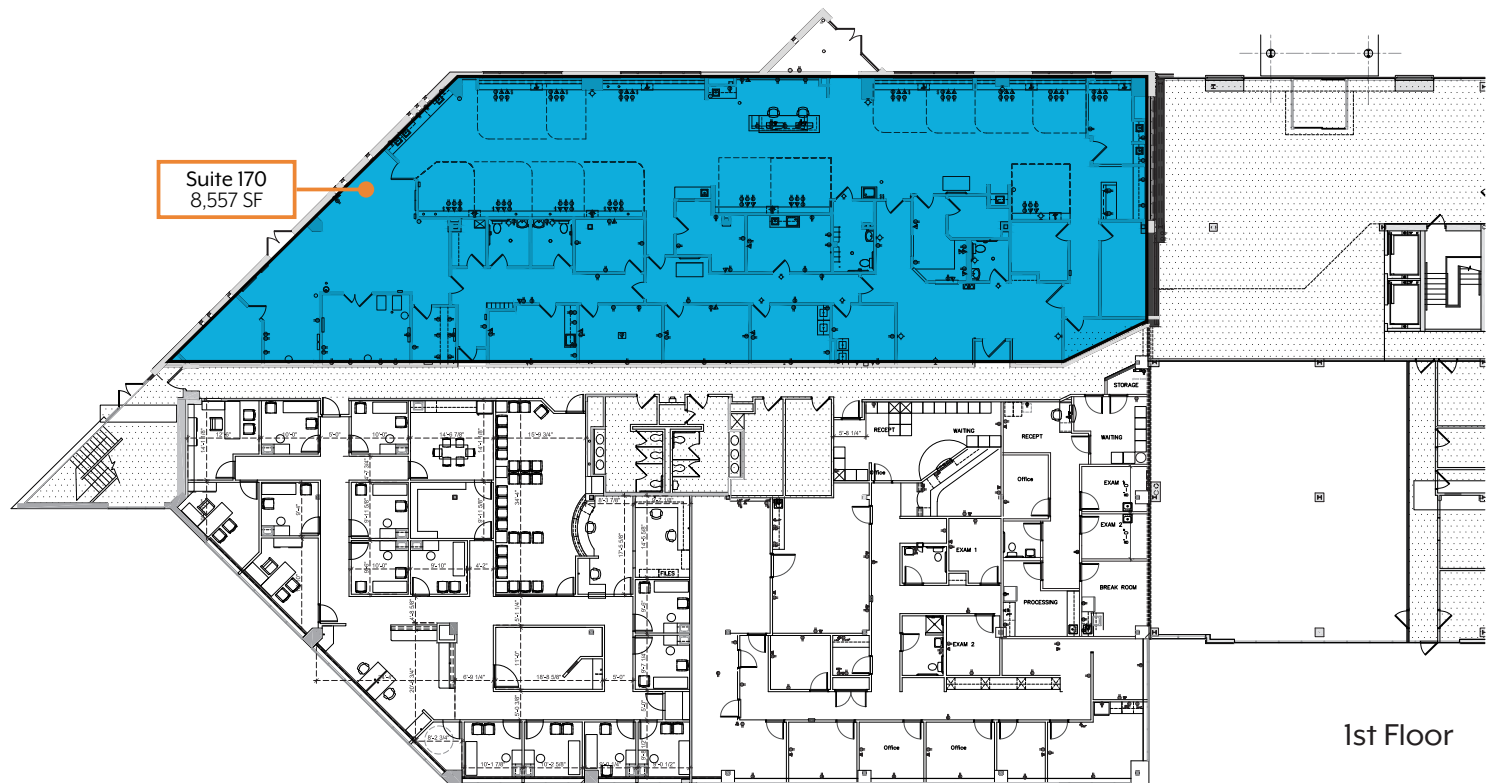
**Cozad Commercial Real Estate**  
**MD Real Estate Advisors, LLC**  
16 Sunnen Drive, Ste. 164  
St. Louis, Missouri 63143

## PROPERTY HIGHLIGHTS

- ▶ 8,557 SF medical office suite available
- ▶ Class A medical facility
- ▶ Dedicated physician parking
- ▶ Porte cochère allows for covered drop off and pick up
- ▶ Parking ratio of 5:1000
- ▶ 1.7 miles from Mercy Hospital, 2.4 miles from Missouri Baptist Hospital
- ▶ Located at signalized intersection off Ballas Road and Old Ballas Road
- ▶ **Lease Rate: \$30.00/sf FS**

# 555 N. NEW BALLAS ROAD

CREVE COEUR, MO 63141



Suite 170  
8,557 SF



# 555 N. NEW BALLAS ROAD

## CREVE COEUR, MO 63141



Information herein has been obtained from the owner of the property or from other sources. The brokers do not guarantee the accuracy of this information. Sellers and brokers make no representation as to the environmental or other conditions of the property and that purchaser investigate fully.

**COZAD COMMERCIAL REAL ESTATE**  
**MD REAL ESTATE ADVISORS**  
A subsidiary of Cozad Commercial Real Estate, Ltd.  
16 Sunnen Dr., Ste. 164 • St. Louis, MO 63143