

4,573 SF
NOW AVAILABLE
FOR LEASE

CREATIVE OFFICE SPACE

6125 Washington Blvd. 2nd floor
Culver City, CA



PROPERTY HIGHLIGHTS:

- Prime Culver City location
- Plug and Play opportunity
- Several walking distance amenities
- Highly improved creative office space
- Entire floor suite
- Elevator served
- Rooftop deck
- Furniture available
- Freeway close
- Underground parking

Leasing contacts:

William Hugron CCIM, SIOR

714.356.7823

william@ashwillassociates.com

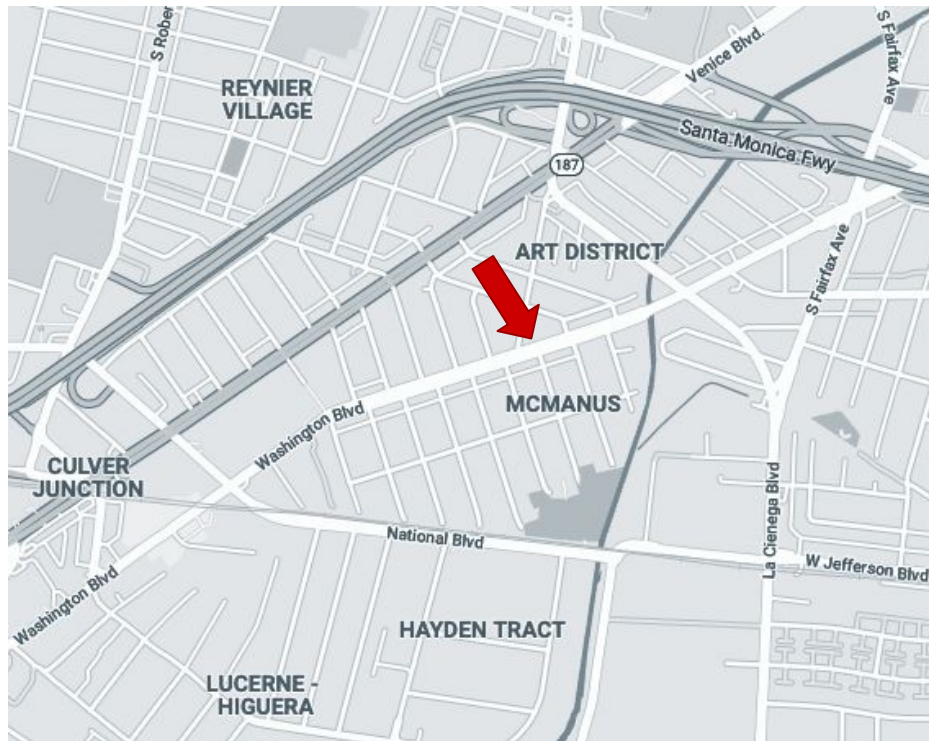
DRE# 00803524 Corp.DRE# 01291393

Justin Hugron, CCIM

949.216.0469

justin@ashwillassociates.com

DRE# 02069980 Corp.DRE# 01291393



**Ashwill
Associates**
COMMERCIAL REAL ESTATE

INTERIOR PHOTOS



BULLPEN



KITCHEN



OPEN WORK SPACE



MEETING ROOM

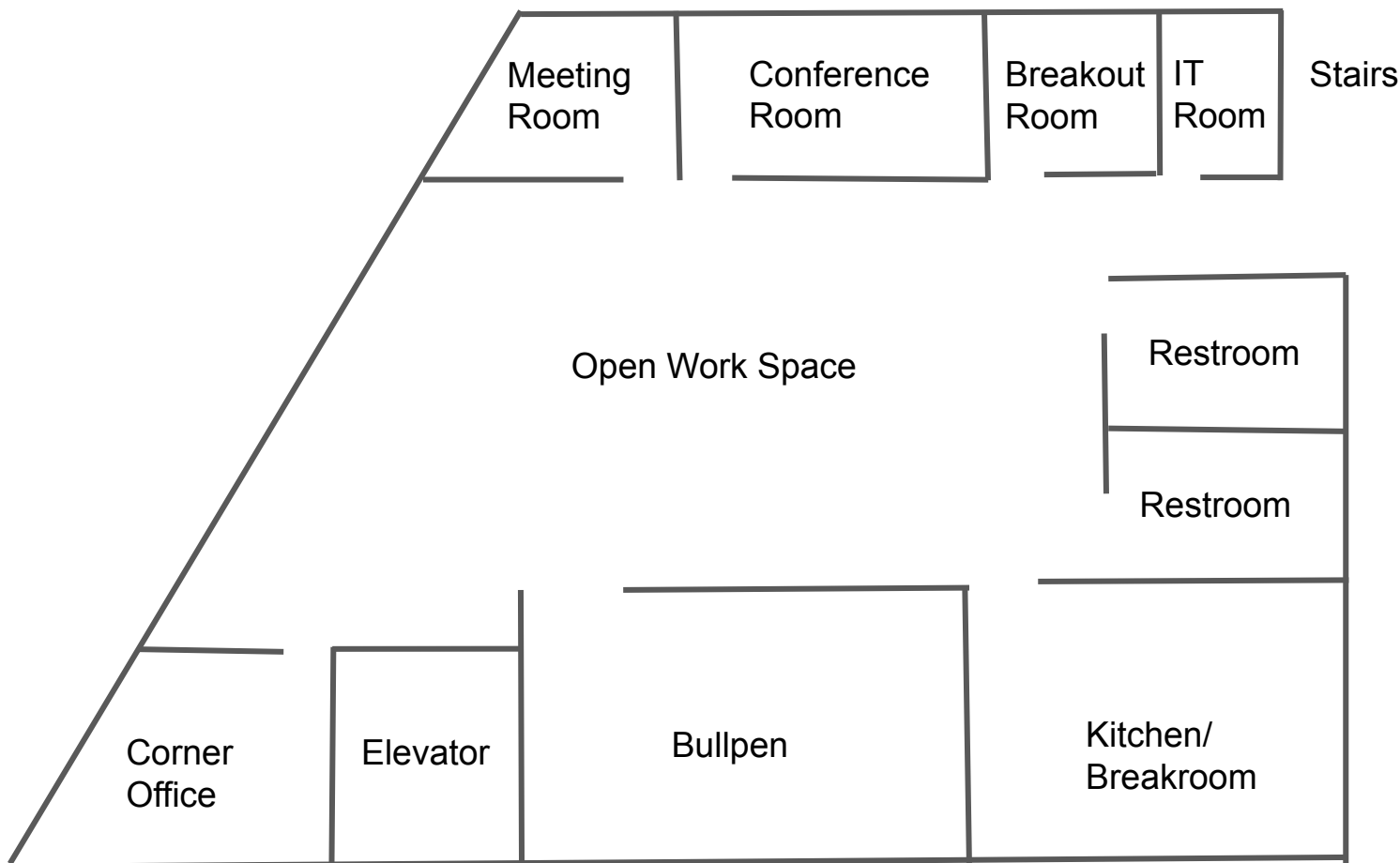


CORNER OFFICE



CONFERENCE ROOM

FLOOR PLAN/SITE PHOTOS



Entire 2nd floor, consisting of: large open work space, oversized bullpen, two corner glass offices, conference room, breakout room, IT room, two restrooms, kitchen/break room, and rooftop deck.

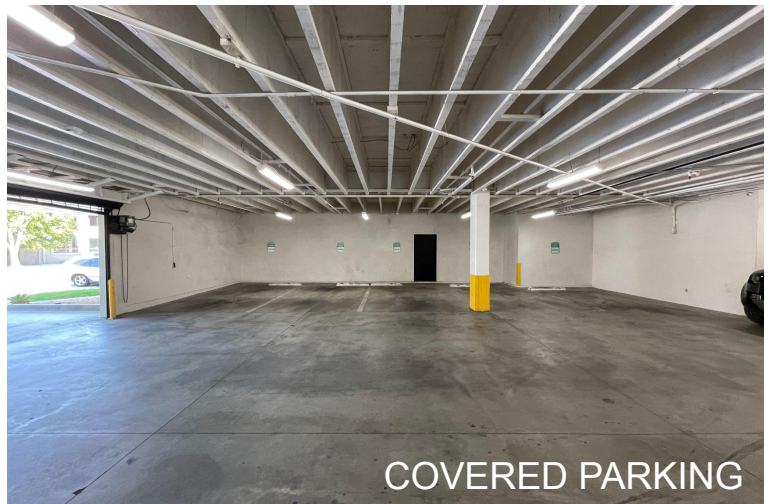


EXPANSIVE GLASS LINES



GROUND FLOOR LOBBY

EXTERIOR PHOTOS



FOR MORE INFO
OR TO TOUR

William Hugron CCIM, SIOR
714.356.7823
william@ashwillassociates.com
DRE# 00803524 Corp.DRE# 01291393

Justin Hugron, CCIM
949.216.0469
justin@ashwillassociates.com
DRE# 02069980 Corp.DRE# 01291393



**Ashwill
Associates**
COMMERCIAL REAL ESTATE