

N/F WAWA, INC.
 TM 20, PCL 112
 LR 010023752
 LR 020007104
 LR 020030497

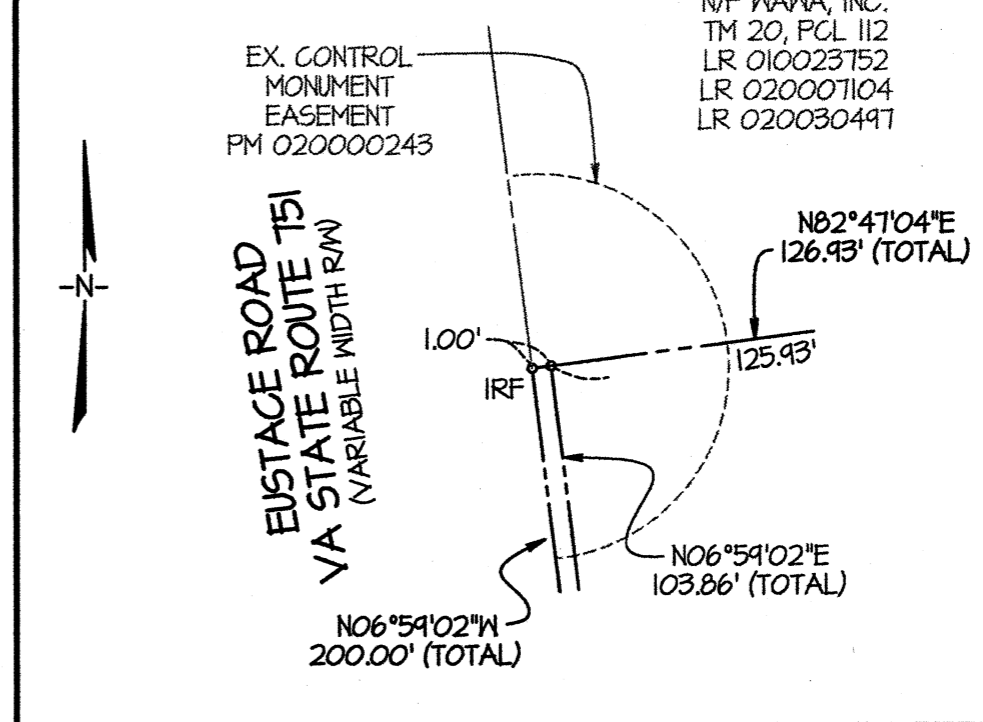
N/F GARRISONVILLE LLC
 TM 20, PCL III
 LR 060013753

LINE TABLE

LINE	BEARING	DISTANCE
L1	S83°00'51"W	12.26'
L2	N38°00'51"E	19.73'
L3	N40°13'12"W	52.33'

DETAIL

1" = 10'



N/F WAWA, INC.
 TM 20, PCL 112
 LR 010023752
 LR 020007104
 LR 020030497

EUSTACE ROAD ~ VA STATE ROUTE 151
 (VARIABLE WIDTH RW)

EX. WATERLINE EASEMENT
 PM 020000243

EX. CONTROL MONUMENT EASEMENT
 PM 020000243

TAX MAP 20
 PARCEL 113
 0.704 ACRES (ORIGINAL)

0.034 ACRES HEREBY
 DEDICATED TO PUBLIC USE

EX. PROPERTY LINE
 HEREBY VACATED

0.071 ACRES HEREBY
 DEDICATED TO PUBLIC USE

**TAX MAP 20
 PARCEL 114**
 4.089 ACRES (ORIGINAL)
 4.682 ACRES (REVISED)

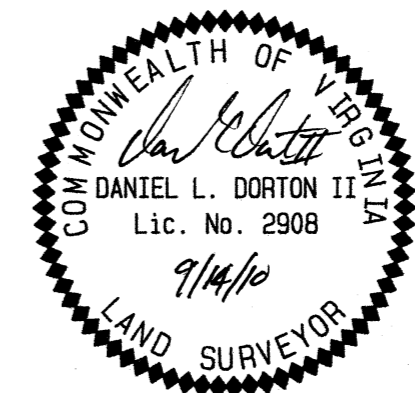
N/F STORAGE 2000 - STAFFORD NA, LLC
 TM 20, PCL 104A
 LR 060005985

PARCEL F - COMMON AREA
 N/F SETTLERS LANDING
 HOMEOWNERS ASSOCIATION INC.
 TM 20L, PCL F
 DB 155, PG 235

SETTLER'S LANDING ~ SECTION 8
 TM 20L
 PB 15, PG 280

LOT 338
 N/F BACK
 TM 20L, PCL 338
 LR 050031550

STONEHILL ESTATES
 PHASE FOUR
 PB 25, PG 291
 LOT 75
 N/F KOLES
 TM 20DD-(4), PCL 75
 LR 080012106



PLAT SHOWING
 PARCEL CONSOLIDATION, STREET DEDICATION & EASEMENTS ON THE LANDS OF
EUSTACE RD LLC
 LR 080010492

ROCK HILL MAGISTERIAL DISTRICT
 STAFFORD COUNTY, VIRGINIA
 SCALE: 1" = 50'
 DATE: OCTOBER 28, 2008
 REVISED: MAY 27, 2010
 REVISED: SEPTEMBER 14, 2010

GREENHORNE & O'MARA, INC.
 CONSULTING ENGINEERS
 1227 CENTRAL PARK BOULEVARD
 FREDERICKSBURG, VA. 22401
 (540) 785-2528 FAX (540) 785-4814

