

# Westpoort Office Plaza

2607 Washington Street  
Pella, IA  
[www.cbre.com/desmoines](http://www.cbre.com/desmoines)

Former medical office space for lease located off Washington Street with quick access to Highway 163. Nearby businesses include Pella Corp, Vermeer and many others. Pella is a community located 40 miles southeast of Des Moines. It is also home to Central College which is located 2.5 miles from the subject property.

## Available Space

+ 2,230 SF

## Lease Rate

+ \$13.50 PSF NNN

+ Opex: \$7.20 PSF

## Space Features

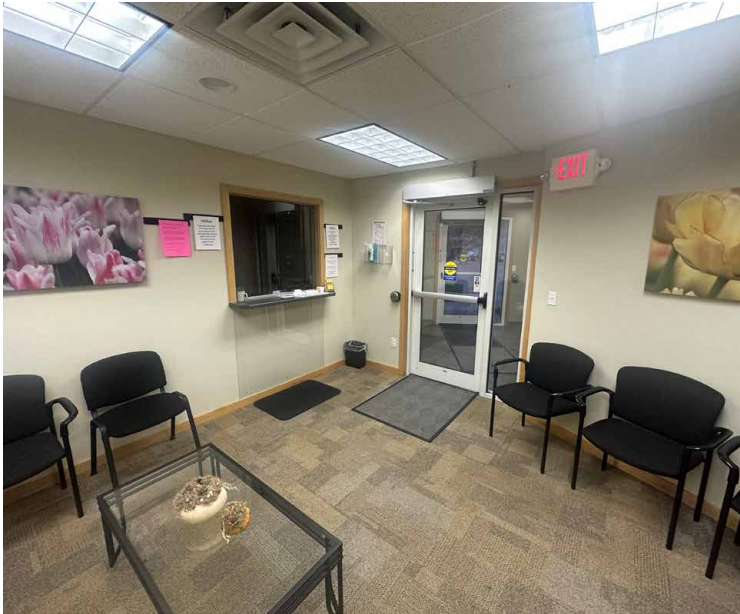
- + Reception
- + 7 Offices
- + 2 Restrooms
- + Breakroom
- + Monument signage available



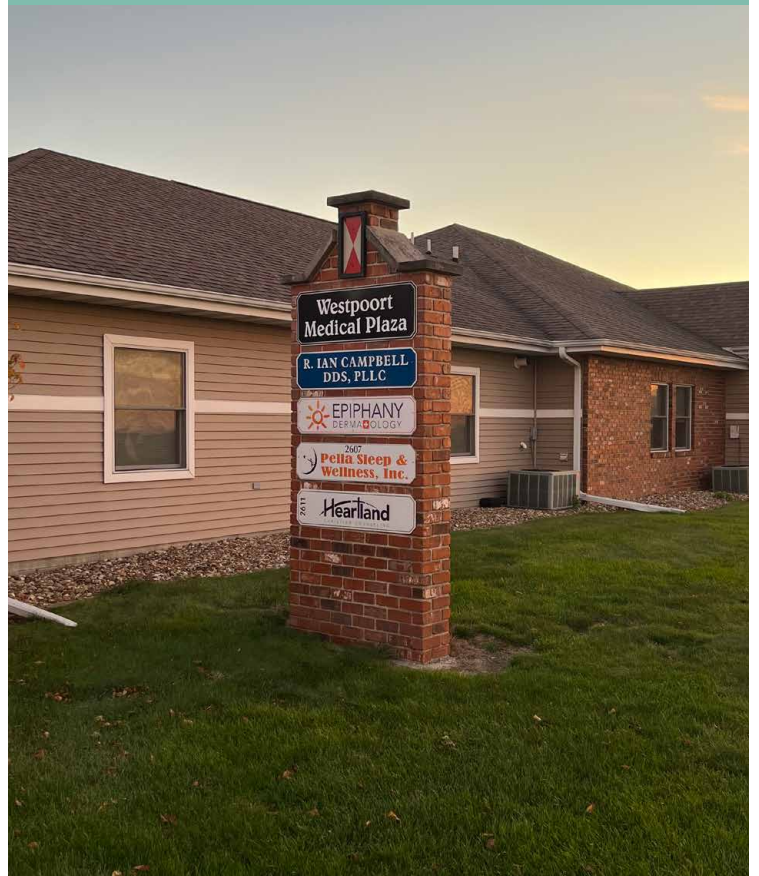
2607 Washington St  
Pella, IA

For Lease

# Property Photos



## Monument Signage



2607 Washington St  
Pella, IA

For Lease

# Location



## Contact Us

### Drew Rosonke

Sales Associate

+1 515 612 5494

drew.rosonke@cbre.com

Licensed in the State of Iowa

### David Eckley

Vice President

+1 515 314 1715

david.eckley@cbre.com

Licensed in the State of Iowa

© 2025 CBRE, Inc. All rights reserved. This information has been obtained from sources believed reliable, but has not been verified for accuracy or completeness. You should conduct a careful, independent investigation of the property and verify all information. Any reliance on this information is solely at your own risk. CBRE and the CBRE logo are service marks of CBRE, Inc. All other marks displayed on this document are the property of their respective owners, and the use of such logos does not imply any affiliation with or endorsement of CBRE. Photos herein are the property of their respective owners. Use of these images without the express written consent of the owner is prohibited.

[www.cbre.com/desmoines](http://www.cbre.com/desmoines)

**CBRE**