

RIVERDALE BROOKHAVEN I

4905 & 4933 South 1500 West, Riverdale, Utah 84405



FOR LEASE

\$21.00/SF FULL SERVICE

PROPERTY FEATURES

- 3,700 RSF Available on the Second Floor
- 4,126 RSF Available on the Second Floor
- 1,807 RSF Available on the First Floor
- 5,354 RSF Available on the First Floor
- Full First Floor Available: 7,161 RSF
- 135 Parking Stalls
- Rare Freeway Visibility
- Plug and Play Suite
- Excellent Access to I-15 & I-84

FOR MORE
INFORMATION
CONTACT

CHRIS FALK, CCIM, SIOR
801.416.1024
chris.falk@ngkf.com

BRAXTON WILLIE, CCIM
801.416.1050
braxton.willie@ngkf.com



1755 East 1450 South, Suite 100 | Clearfield, Utah 84015 | 801.927.2000 | www.ngacres.com

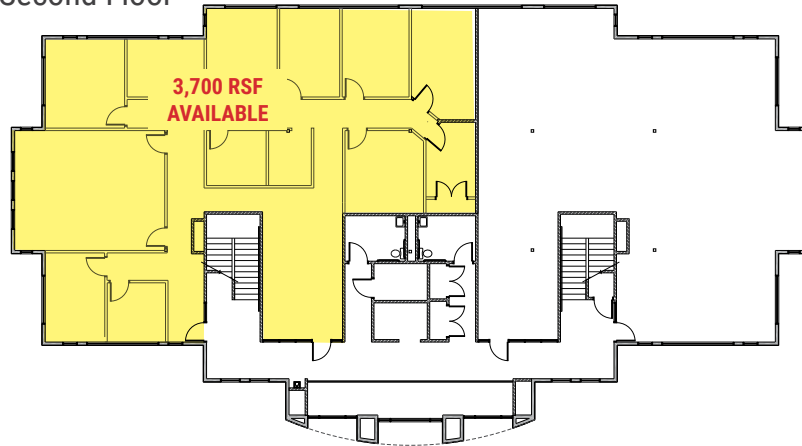
This document has been prepared by Newmark Knight Frank for advertising and general information purposes only. While the information contained herein has been obtained from what are believed to be reliable sources, the same has not been verified for accuracy or completeness. Newmark Knight Frank accepts no responsibility or liability for the information contained in this document. Any interested party should conduct an independent investigation to verify the information contained herein.

RIVERDALE BROOKHAVEN I

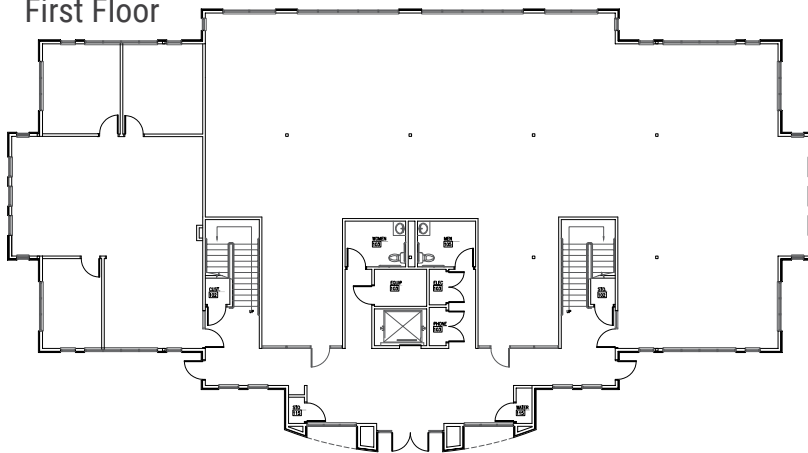
4905 & 4933 South 1500 West, Riverdale, Utah 84405

SOUTH BUILDING

Second Floor



First Floor

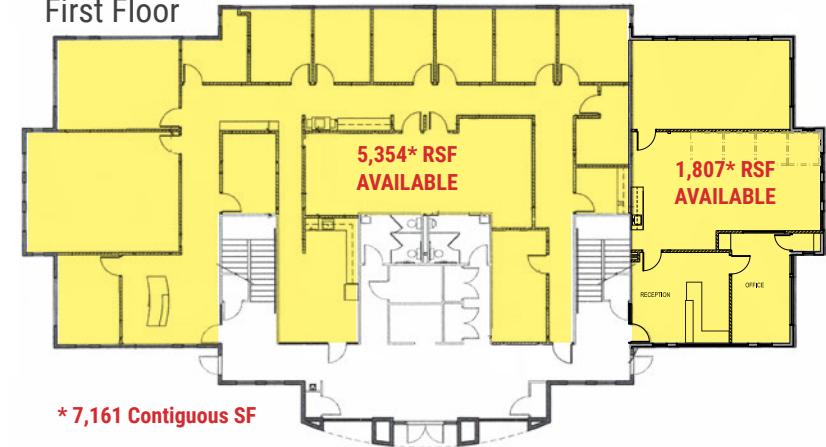


NORTH BUILDING

Second Floor



First Floor



RIVERDALE BROOKHAVEN I

4905 & 4933 South 1500 West, Riverdale, Utah 84405

