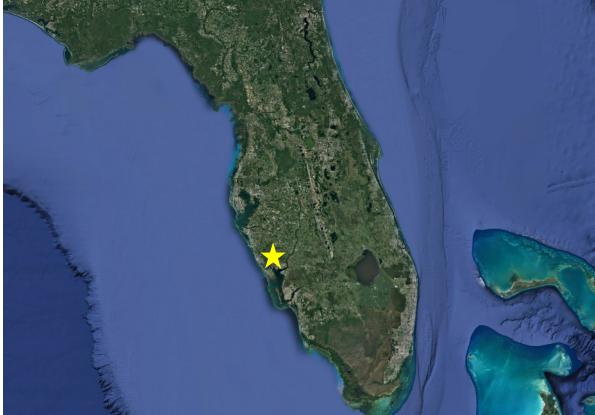


**MRC**  
MERRITT REALTY CORPORATION

# Daycare Opportunity

2525 N Salford Blvd North Port 34286



## DEMOGRAPHICS

### 3 MILES

### 5 MILES

POPULATION

59,600

81,900

HOUSEHOLDS

21,700

31,200

MDN. HH INCOME

\$79,800

\$76,400

## PROPERTY HIGHLIGHTS

Frontage on main artery that is in close proximity to Interstate 75 and U.S. 41. This lot is located in the City of North Port. It is an ideal location for a daycare or education facility. Centrally located to 7 public education institutions which include: Lamarque Elementary School, Cranberry Elementary School, Glenallen Elementary School, Imagine School At North Port—Elementary Campus, Heron Creek Middle School, North Port High School, and Imagine School At North Port—High School.

## PROPERTY INFORMATION

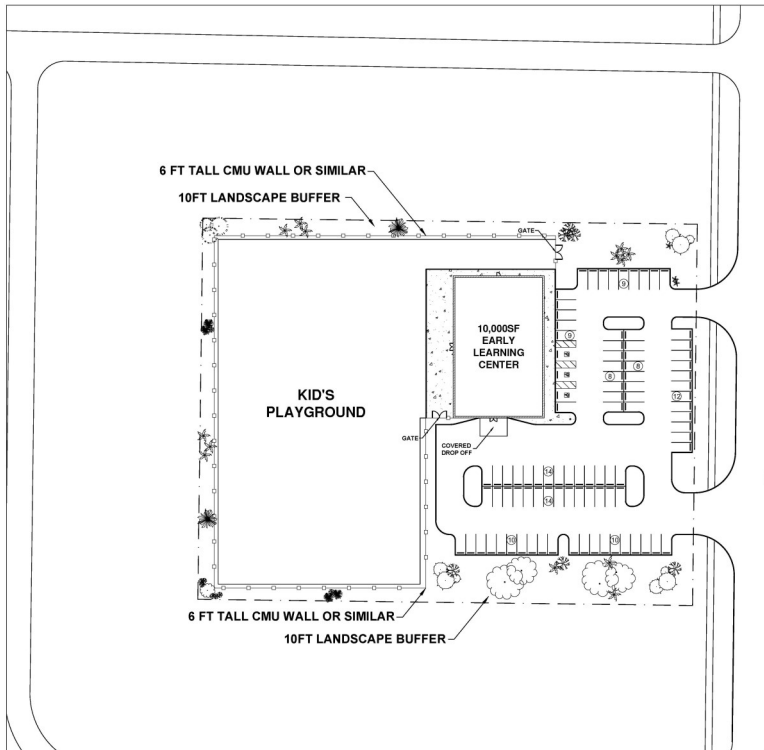
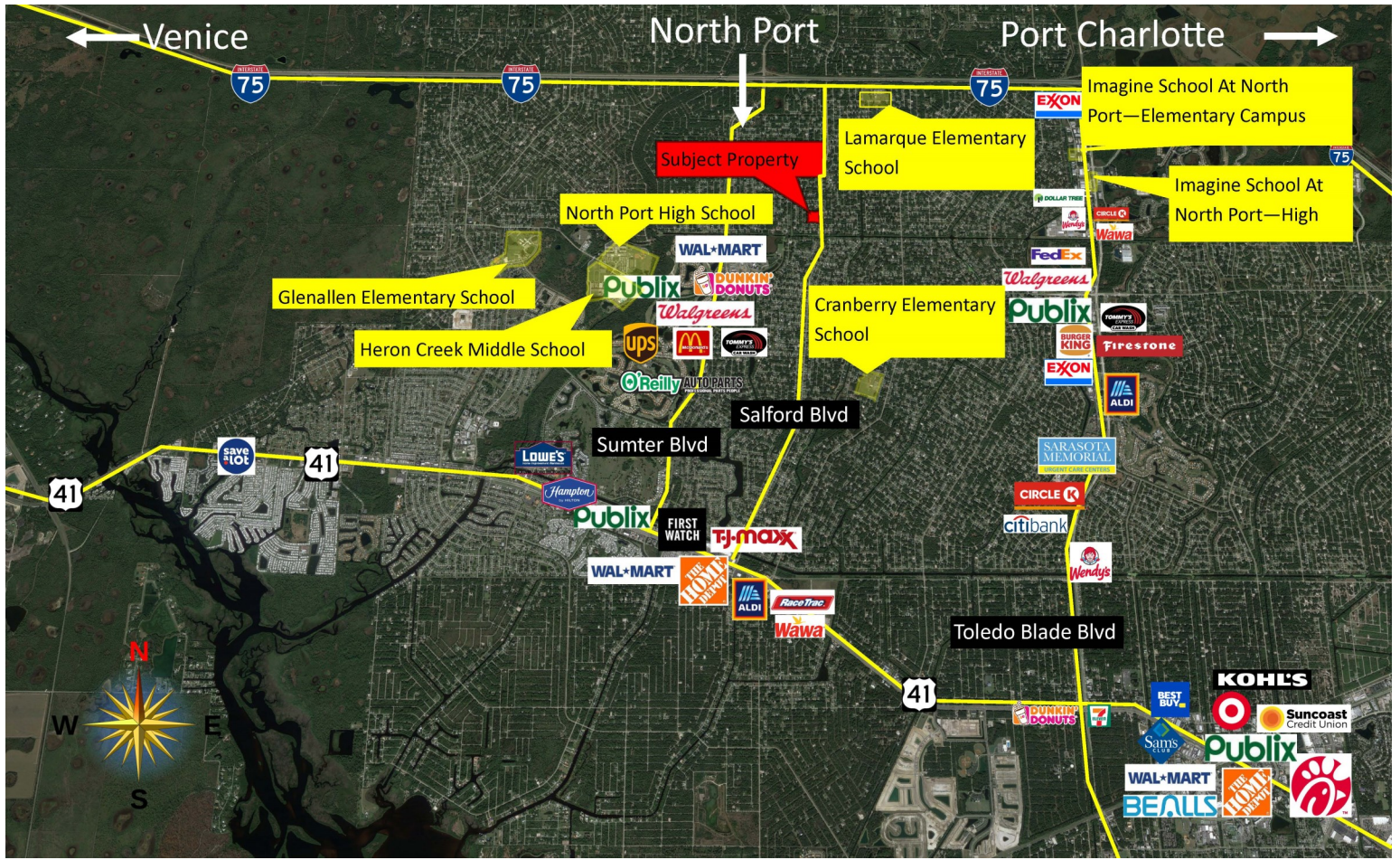
PRICE: \$950,000

ACRES: 3.35

ZONING: NCL—Neighborhood Commercial Low Intensity

**CALL TODAY, TO SET UP A VIEWING OF THIS GREAT PROPERTY.**

**gomerritt.com**



**PRINTING & DESIGN**  
 MERITT  
 A DIVISION OF MERRITT REALTY CORPORATION

**EARLY LEARNING CENTER WITH PLAYGROUND**



SCALE: 1 : 30

PROJECT DATA	
LOT SIZE:	3.35 ACRES (145,730 SF)
ZONING:	NCL1
EARLY LEARNING CENTER WITH PLAYGROUND	BUILDING AREA: 10,000 SF
	94 PARKING SPACES

DATE: 09-22-2024  
 CONCEPT DRAWING FOR EARLY LEARNING CENTER WITH PLAYGROUND  
 MERITT PRINTING AND DESIGN  
 261 S TAMiami TRAIL, NOKOMIS, FL 34275

**Terry A Purdy, Broker/Owner**  
 941.320.6079  
 E-mail: [terry@gomerritt.com](mailto:terry@gomerritt.com)  
 Web: [www.gomerritt.com](http://www.gomerritt.com)  
 261 S. Tamiami Trail ~ Nokomis, FL 34275

**gomerritt.com**