

FOR LEASE

1219-1239 DANIELS ROAD
WINTER GARDEN, FL 34787



Matthew B. Weinberger

Vice President

Lee & Associates | Central Florida

D 321.281.8510

E mweinberger@lee-associates.com

**NEW CLASS "A" RETAIL & MEDICAL SPACE
LOCATED IN THE HEART OF WINTER GARDEN
FROM 2,000 - 10,000 ± RSF AVAILABLE**



- From 2,000 - 10,000 RSF Available
- Two (2) standalone buildings with direct frontage on Daniels Road (35,000+ AADT)
- Located just North of Winter Garden Village, AdventHealth Winter Garden and Nemours Children's Hospital
- 5.00/1,000SF Parking Ratio
- Please Contact Broker For Lease Rates





1.5 MILES FROM FLORIDAS TURNPIKE



2.6 MILES FROM FL-429



14 MILES FROM I-4



4.8 MILES FROM FL-408



Population

1 Mile: 10,996
3 Mile: 57,935
5 Mile: 123,603



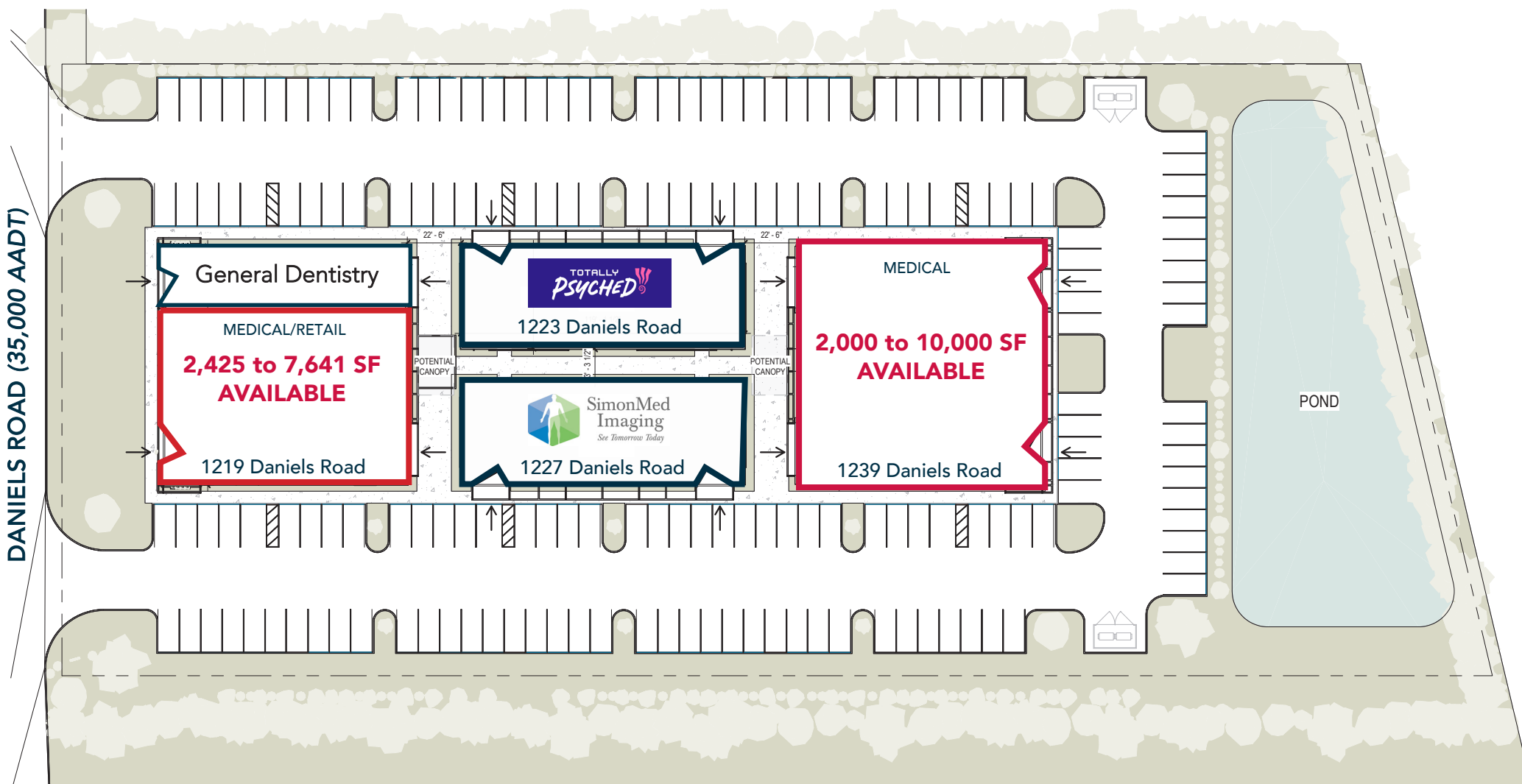
Households

1 Mile: 3,767
3 Mile: 19,871
5 Mile: 42,202

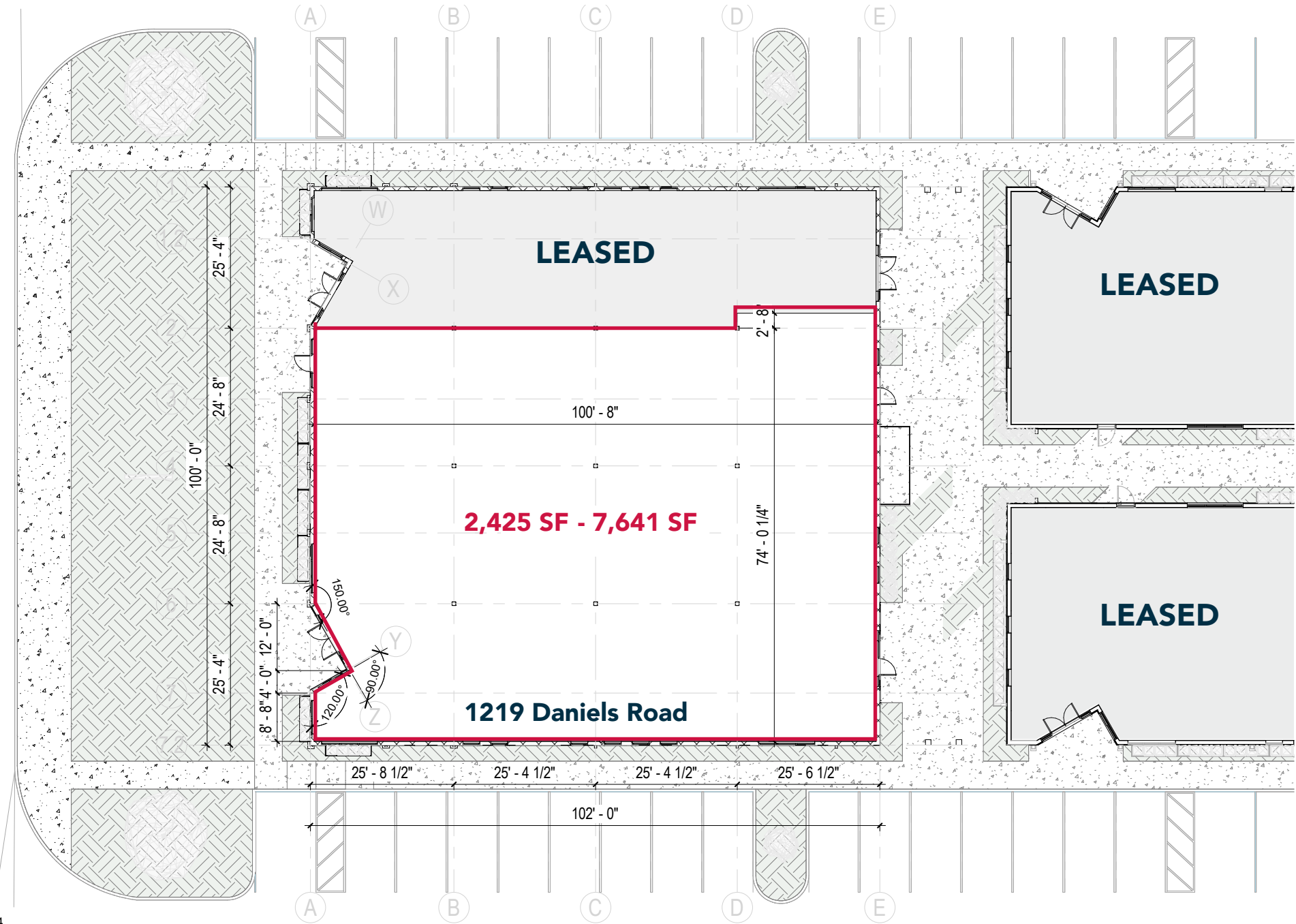


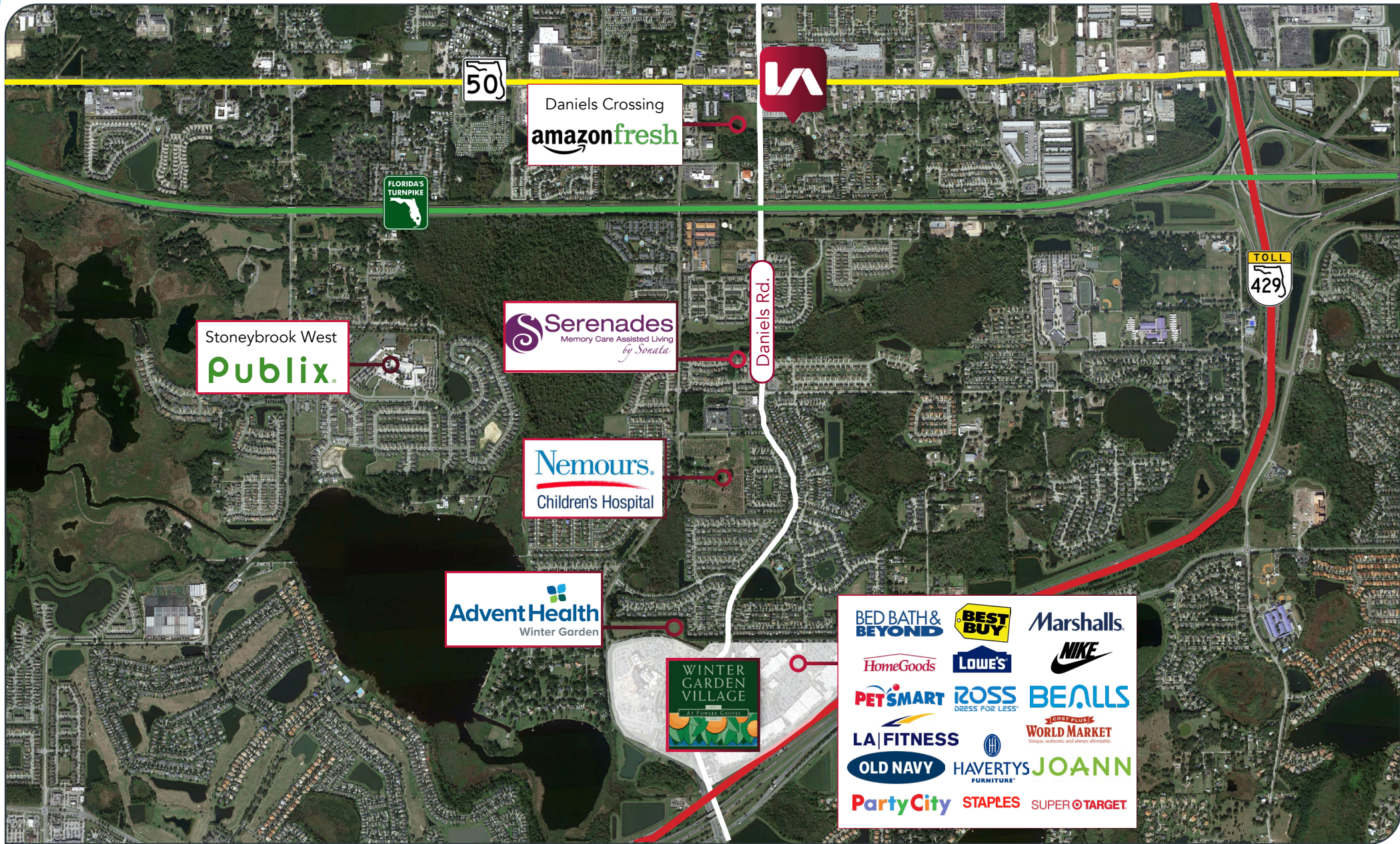
Avg Household Income

1 Mile: \$86,368
3 Mile: \$115,683
5 Mile: \$112,123



DANIELS ROAD (35,000 AADT)







For more information, please contact one of the following individuals:

CONTACT

Matthew B. Weinberger

Vice President

Lee & Associates | Central Florida

D 321.281.8510

M 239.246.1030

E mweinberger@lee-associates.com