

8283 S Hwy 1, Port St. Lucie, FL 34952

FIESTA SQUARE UNIT



FOR **LEASE**



ALBERT BROWN
Sales Associate
T: 772.631.7989
E: albert@albertbrownre.com

5,000 SF

EXECUTIVE SUMMARY

8283 S Hwy 1, Port St. Lucie, FL 34952 | FIESTA SQUARE UNIT

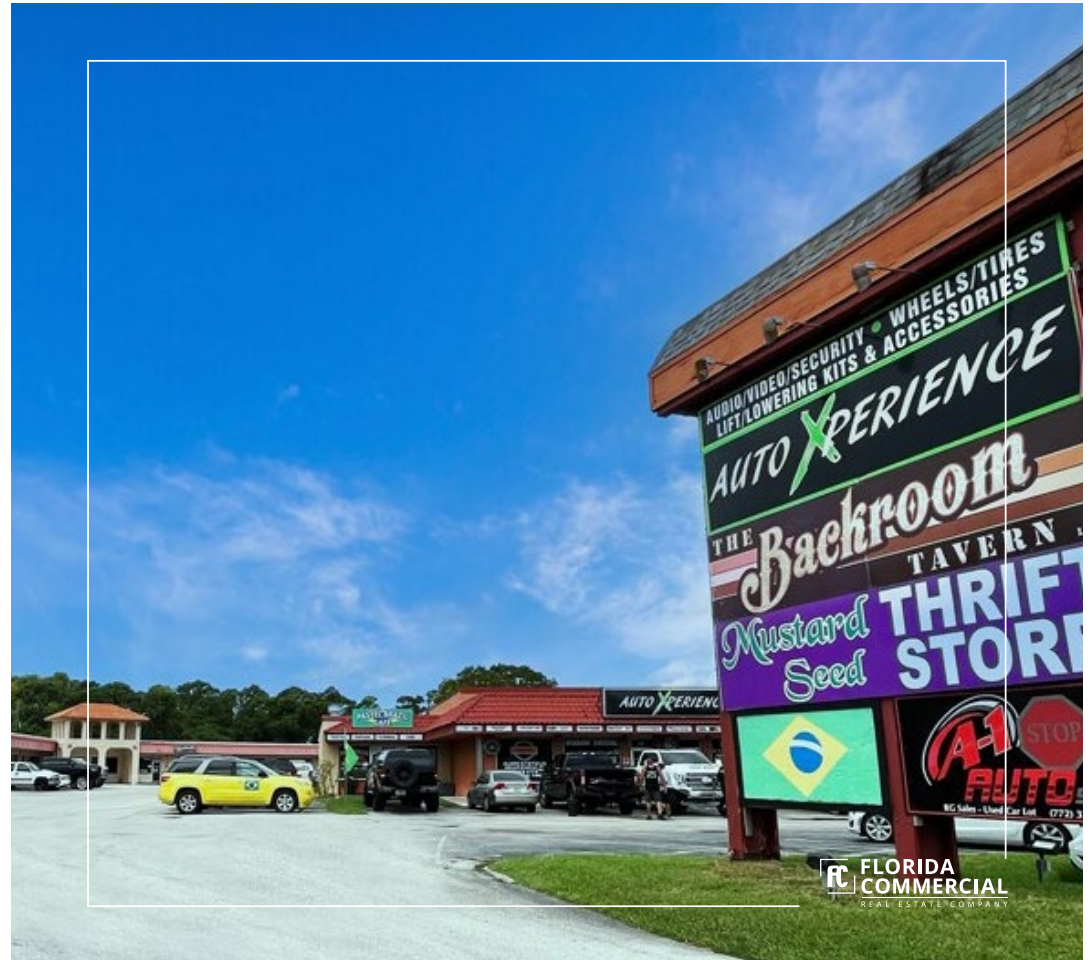
SPECS

Price:	\$10.80 SF YR / GROSS
Unit Size:	5,000 SF
Year Built:	1980
Plaza Lot Size:	3.27 Acres
Zoning:	CG - Commercial General - PSL

PROPERTY OVERVIEW

Located in the busy Fiesta Square Retail Plaza, this 5,000 SF retail suite offers a wide-open layout with four private offices, unique new light fixtures, and cubicle sections. Excellent monument signage provides maximum visibility, and the versatile design is ideal for both retail and light industrial uses.

Fiesta Square is situated conveniently on US-1, a High traffic volume Highway between Crosstown Parkway and Prima Vista Blvd, two prominent thoroughfares in Port Saint Lucie with direct links to I-95 and the Turnpike. This property holds an ideal position in the midst of a rapidly expanding market. Its strategic location and close proximity to densely populated residential areas make it a prime location for any retail business.



ALBERT BROWN
Sales Associate
T: 772.631.7989
E: albert@albertbrownre.com

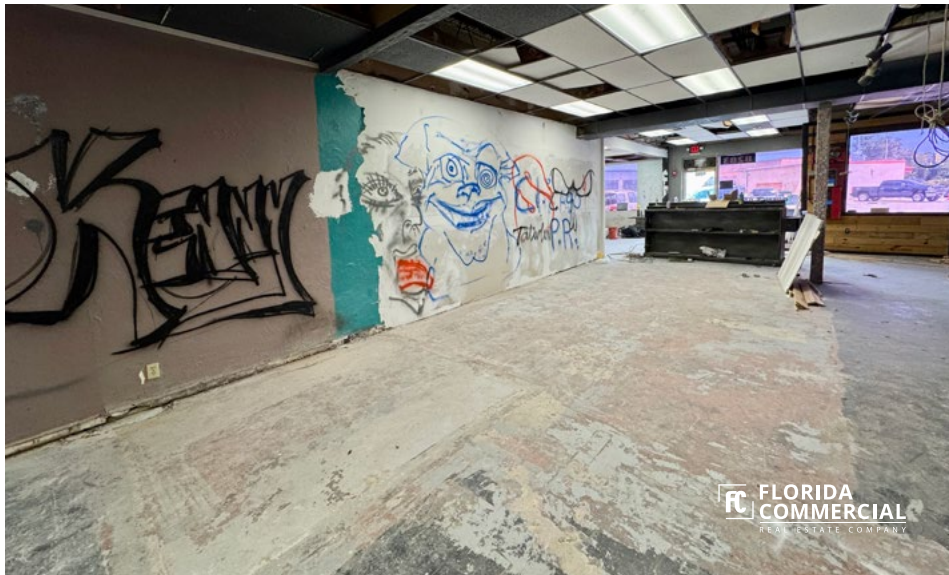
5,000 SF



FLORIDA COMMERCIAL
REAL ESTATE COMPANY



FLORIDA COMMERCIAL
REAL ESTATE COMPANY



FLORIDA COMMERCIAL
REAL ESTATE COMPANY



FLORIDA COMMERCIAL
REAL ESTATE COMPANY

FLORIDA COMMERCIAL
REAL ESTATE COMPANY



ALBERT BROWN
Sales Associate
T: 772.631.7989
E: albert@albertbrownre.com

5,000 SF

309 SE Osceola Street #104 • Stuart, FL 34994 • 772.223.3646 • florida-commercial.net

©Florida Commercial 2021 • This offering is subject to errors, prior to sale/lease, withdrawal, or change in price, terms or conditions without notice.



**FLORIDA
COMMERCIAL**
REAL ESTATE COMPANY



**FLORIDA
COMMERCIAL**
REAL ESTATE COMPANY



**FLORIDA
COMMERCIAL**
REAL ESTATE COMPANY



**FLORIDA
COMMERCIAL**
REAL ESTATE COMPANY

**FLORIDA
COMMERCIAL**
REAL ESTATE COMPANY



ALBERT BROWN
Sales Associate
T: 772.631.7989
E: albert@albertbrownre.com

5,000 SF

309 SE Osceola Street #104 • Stuart, FL 34994 • 772.223.3646 • florida-commercial.net

©Florida Commercial 2021 • This offering is subject to errors, prior to sale/lease, withdrawal, or change in price, terms or conditions without notice.

MAP & REPORT

8283 S Hwy 1, Port St. Lucie, FL 34952 | FIESTA SQUARE UNIT



POPULATION

	1 MILE	3 MILES	5 MILES
Population	4.8K	113.6K	298.4K
Median Age	47.7	52.2	50.4



HOUSEHOLDS & INCOME

	1 MILE	3 MILES	5 MILES
Total Occupied Households	2,855	45.9K	115.6K
# of Employees	9.4K	30.5K	77.6K
Average HH Income	\$47.2K	\$58.7K	\$64.4K



ALBERT BROWN
Sales Associate
T: 772.631.7989
E: albert@albertbrownre.com

5,000 SF

LOCATION

8283 S Hwy 1, Port St. Lucie, FL 34952 | FIESTA SQUARE UNIT



ALBERT BROWN
Sales Associate
T: 772.631.7989
E: albert@albertbrownre.com

5,000 SF