



# OFFICE + WAREHOUSE SPACE FOR RENT

On Rotary Trail in Avondale Neighborhood  
\$20/SF Full-Service

## HIGHLIGHTS

- 2,496 SF unit with lobby, meeting room, and multi-size storage rooms
- Gorgeous finishes and build-out
- Shared foyer and breakroom with contractor Day Star Construction, Inc.
- Four (4) off-street parking spaces
- Front and rear entry

## 4005 2nd Ave South Birmingham, AL 35222

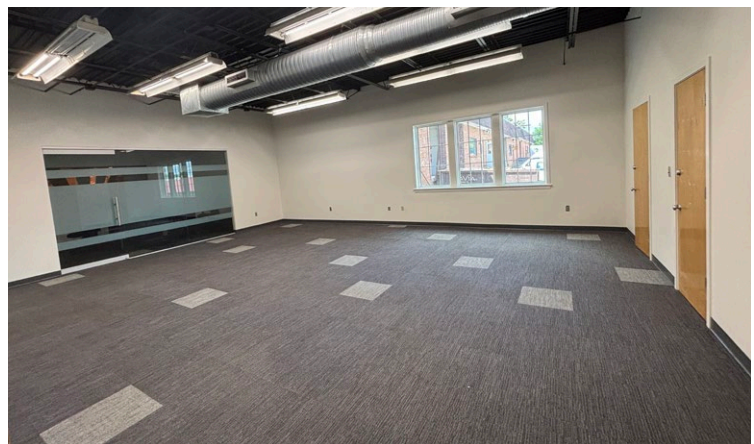
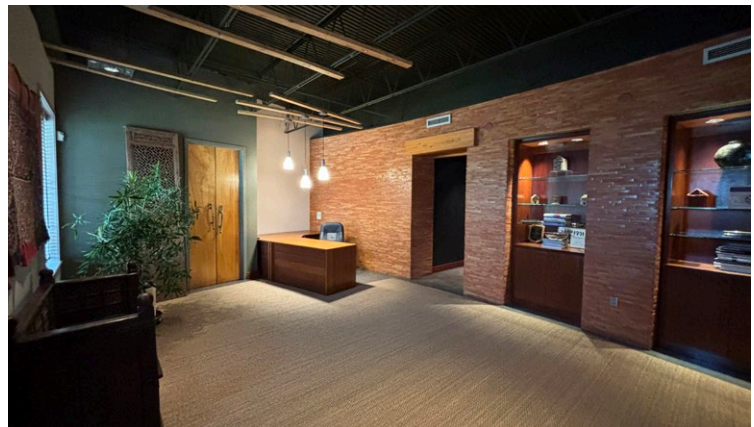
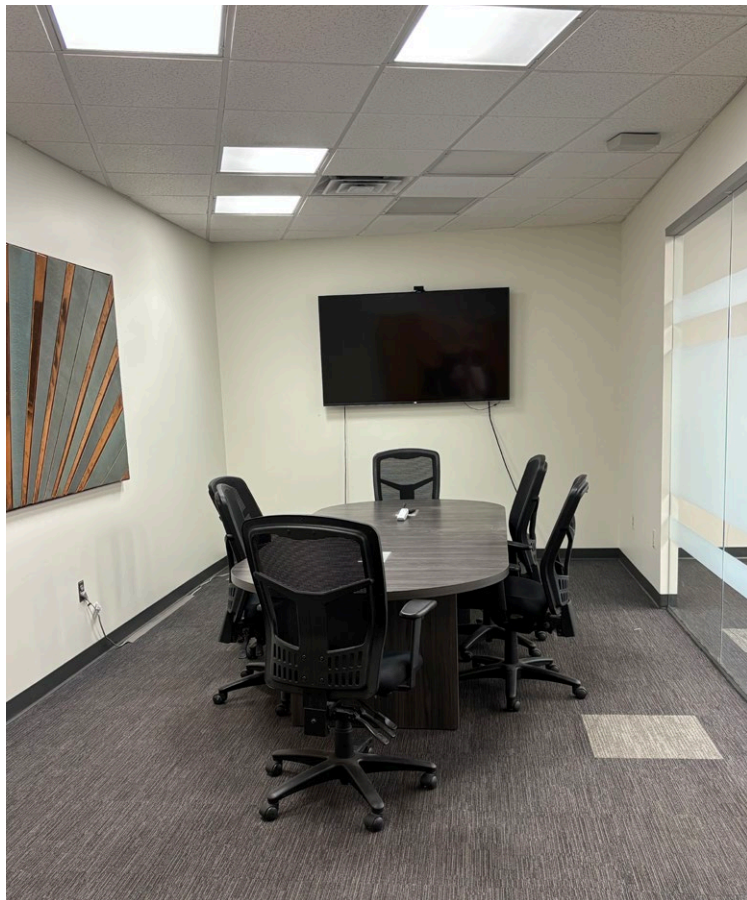
Year Built	1965
Unit Size	2,496 SF
Lease Type	Full-Service
Lease Length	>1 year

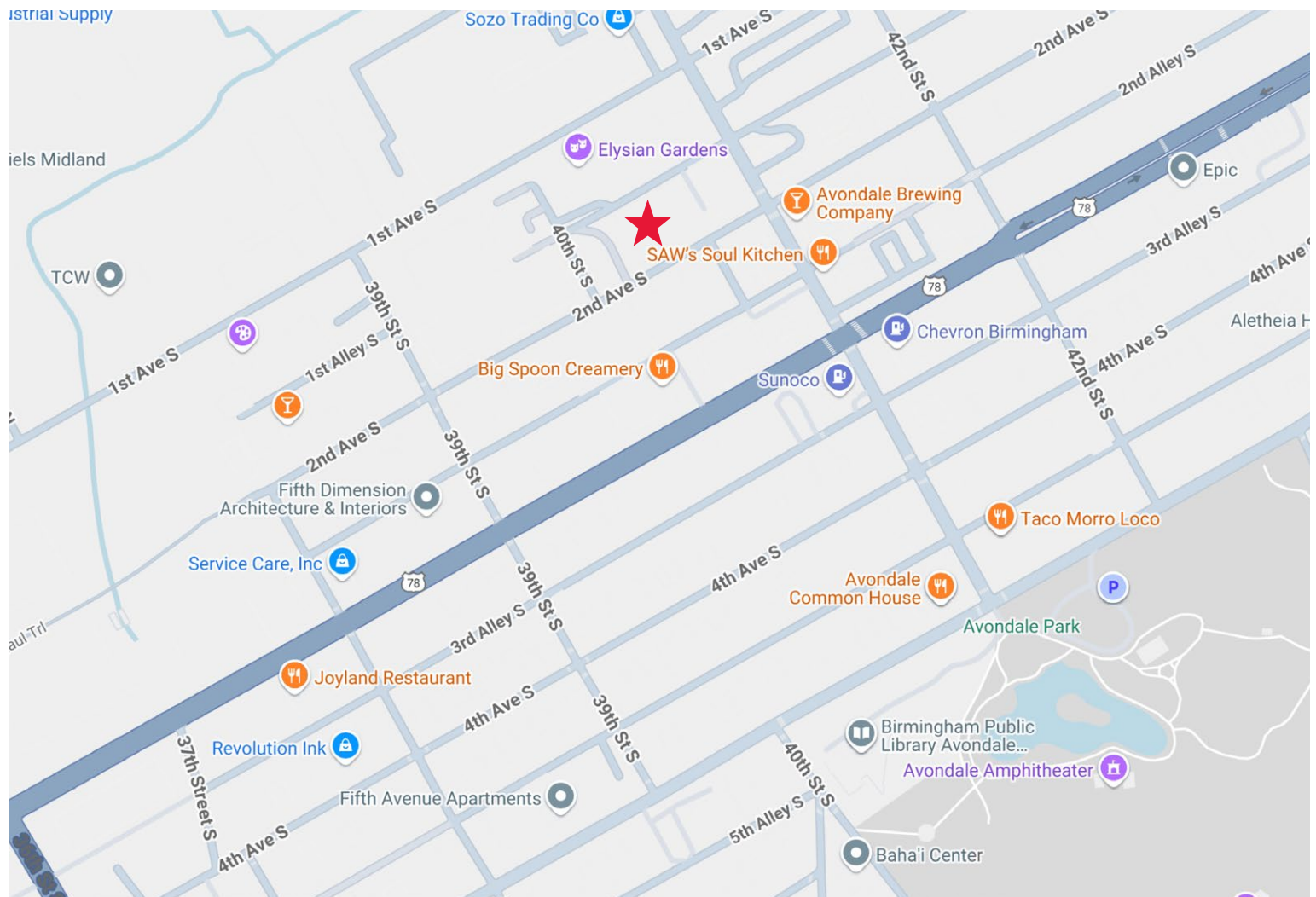


### Marc Perlman

Leitman Perlman  
205.803.3000  
marc@leitmanperlman.com

2421 2nd Ave N, Ste 1  
Birmingham, AL 35203  
leitmanperlman.com





**Marc Perlman**  
Leitman Perlman  
205.803.3000  
marc@leitmanperlman.com

2421 2nd Ave N, Ste 1  
Birmingham, AL 35203  
leitmanperlman.com