

26239 RESEARCH ROAD, HAYWARD, CA

FOR SUBLEASE | INDUSTRIAL WAREHOUSE WITH PARKING IN HAYWARD

TCP
TOUCHSTONE
COMMERCIAL PARTNERS



CHRISTIAN DIGGS
415.710.0932 | cdiggs@tcpre.com

JACK DYKE
415.518.7523 | jdyke@tcpre.com

WWW.TCPRE.COM

PROPERTY SUMMARY

ADDRESS

26239 Research Road, Hayward, CA 94545

AVAILABLE SPACE

+/- 6,053 Square Feet

RENTAL RATE

\$1.25 / SF / Month, NNN

OPERATING EXPENSES

\$0.53 / SF / Month

LEASE EXPIRATION DATE

February 28, 2029

AVAILABLE

Immediately

BUILDING ATTRIBUTES

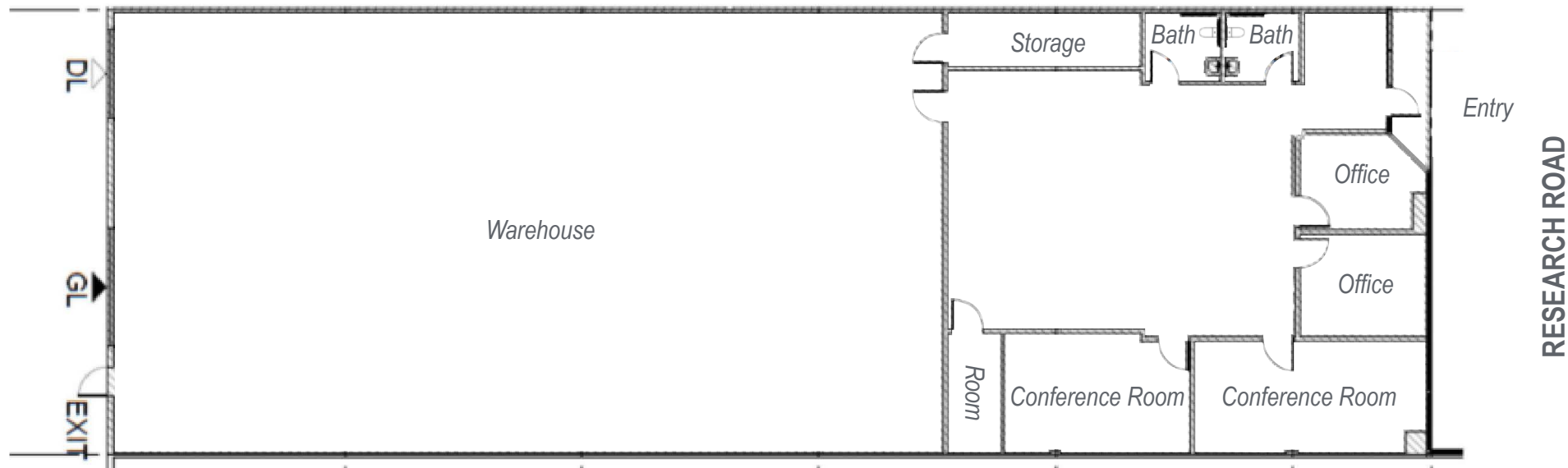
- + 100 amps 480/277 Volts 3 phase
- + One (1) Loading Dock
- + One (1) Grade Level Door
- + 4,500 SF of Warehouse
- + 1,500 SF of Office
- + Six (6) Parking Spaces
- + Storage Racks
- + Security Systems With Interior and Exterior Cameras





FLOOR PLAN

+/- 6,053 Square Feet

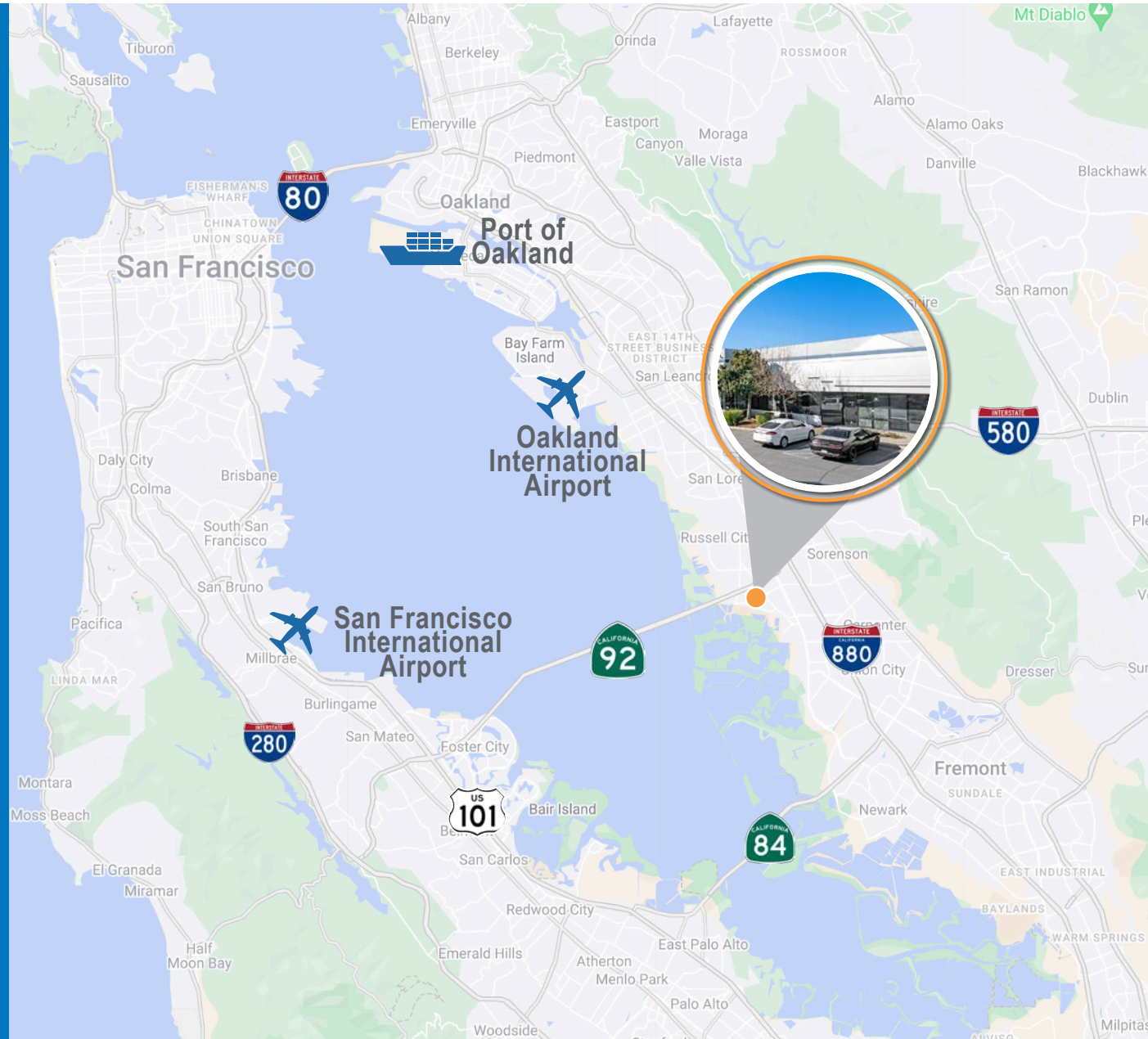


LOCATION OVERVIEW

Desirable location in the heart of the Hayward industrial corridor, centrally located along the I-80 / I-880 corridor with easy access to all corners of the greater Bay Area.

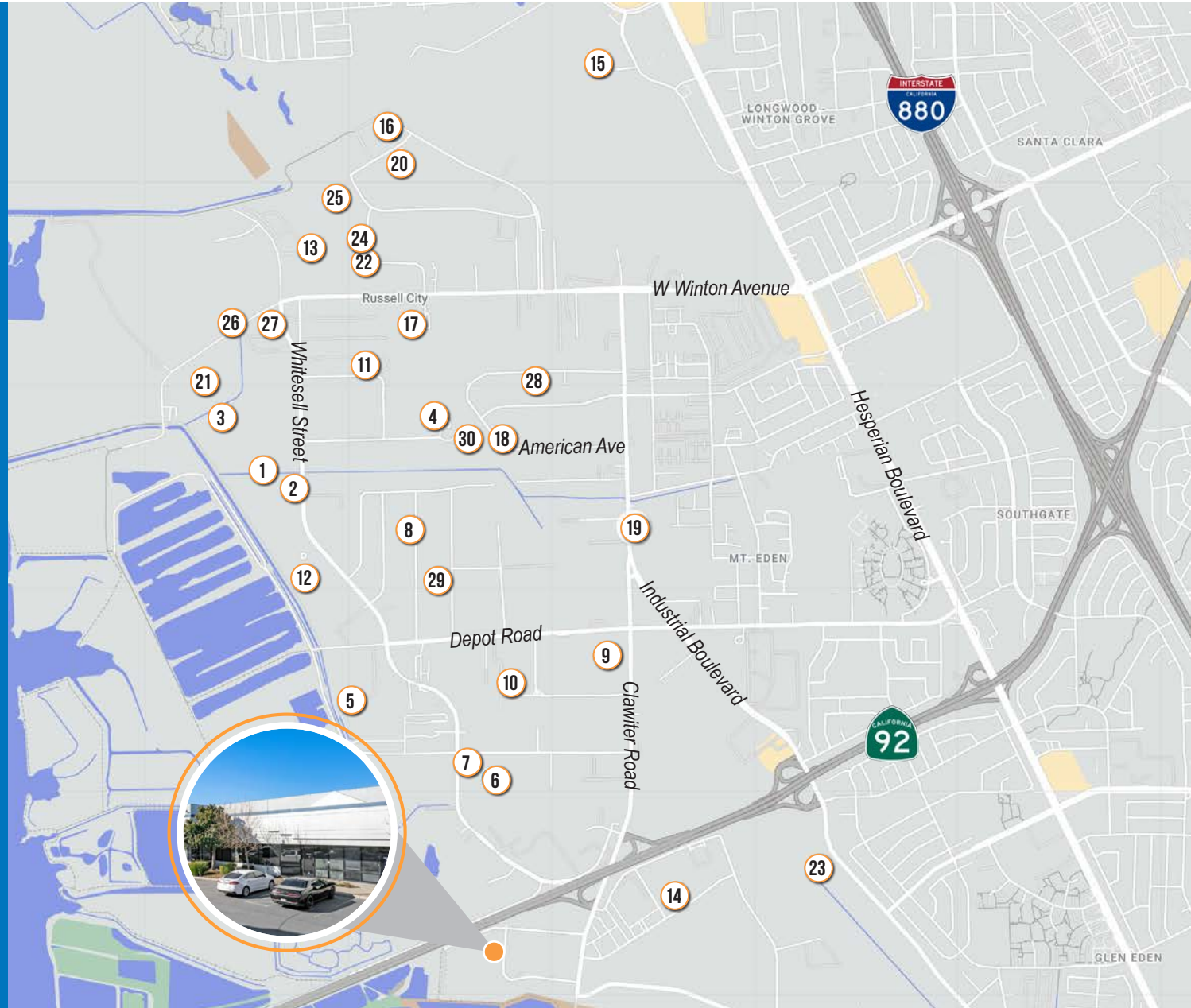
- + SAN FRANCISCO - 28 Miles
- + SFO AIRPORT - 21 Miles
- + OAKLAND AIRPORT - 10 Miles
- + PORT OF OAKLAND - 16 Miles
- + SAN MATEO - 16 Miles

- + OAKLAND INTERMODAL FACILITY - 17 Miles
- + HIGHWAY I-880 - 2.4 Miles
- + HIGHWAY 84-DUMBARTON BRIDGE - 7.7 Miles
- + HIGHWAY I-680 - 16 Miles



NEARBY AMENITIES

- 1 Uni Tile & Marble
- 2 Heat and Control
- 3 HD Supply
- 4 United Rentals
- 5 Calpine
- 6 Sonoco Protective Solutions
- 7 Mag Trucking
- 8 H2O Precision
- 9 Aaron Metals
- 10 Davis Instruments
- 11 Milwaukee Tool
- 12 Farasis Energy
- 13 CORT Furniture Rental
- 14 Therm X
- 15 Hayward Executive Airport
- 16 Sugar Bowl Bakery
- 17 Pentagon Technologies
- 18 Ajinomoto Foods Inc.
- 19 PG&E
- 20 The Montague Company
- 21 Transpak
- 22 Halco USA
- 23 Ferguson
- 24 Azuma Foods
- 25 Copart
- 26 VEEV
- 27 Eaton Corp
- 28 ABC Supply Co. Inc.
- 29 The Sticker Smith
- 30 Baywater Packaging Supply, INC



26239 RESEARCH ROAD



Corp. Lic. 01112906
www.tcppe.com

CHRISTIAN DIGGS DRE # 1865276
415.710.0932 | cdiggs@tcppe.com

JACK DYKE DRE # 02255631
415.518.7523 | jdyke@tcppe.com

This document has been prepared by Touchstone Commercial Partners for advertising and general information only. Touchstone Commercial Partners makes no guarantees, representations or warranties of any kind, expressed or implied, regarding the information including, but not limited to, warranties of content, accuracy and reliability. Any interested party should undertake their own inquiries as to the accuracy of the information. Touchstone Commercial Partners excludes unequivocally all inferred or implied terms, conditions and warranties arising out of this document and excludes all liability for loss and damages arising there from. This publication is the copyrighted property of Touchstone Commercial Partners and/or its licensor(s). ©2026. All rights reserved.