

Retail Spaces | For Lease

CBRE

410 Saint-Nicolas Street
Montreal (Quebec)

CBRE URBAN PROPERTIES | MONTREAL



Address	Suite	SQ. FT.	Monthly Gross Rent
301 Saint-Paul Street	Basement	9,258	\$24,000
297A Le Moyne Street	1	4,235	\$17,700
297B Le Moyne Street	2	3,129	\$13,100
410 Saint-Nicolas Street	3	2,826	\$11,800
295A Saint-Paul Street	4	3,182	\$19,000
295B Saint-Paul Street	Basement	2,700	\$7,250
N / A	5	1,407	\$7,250
	6	1,835	LEASED
299 Saint-Paul Street	7	8,533	\$35,600

Lease Terms



Term 5 - 10 years



Hydro and gas metered



Direct exterior access available for all suites

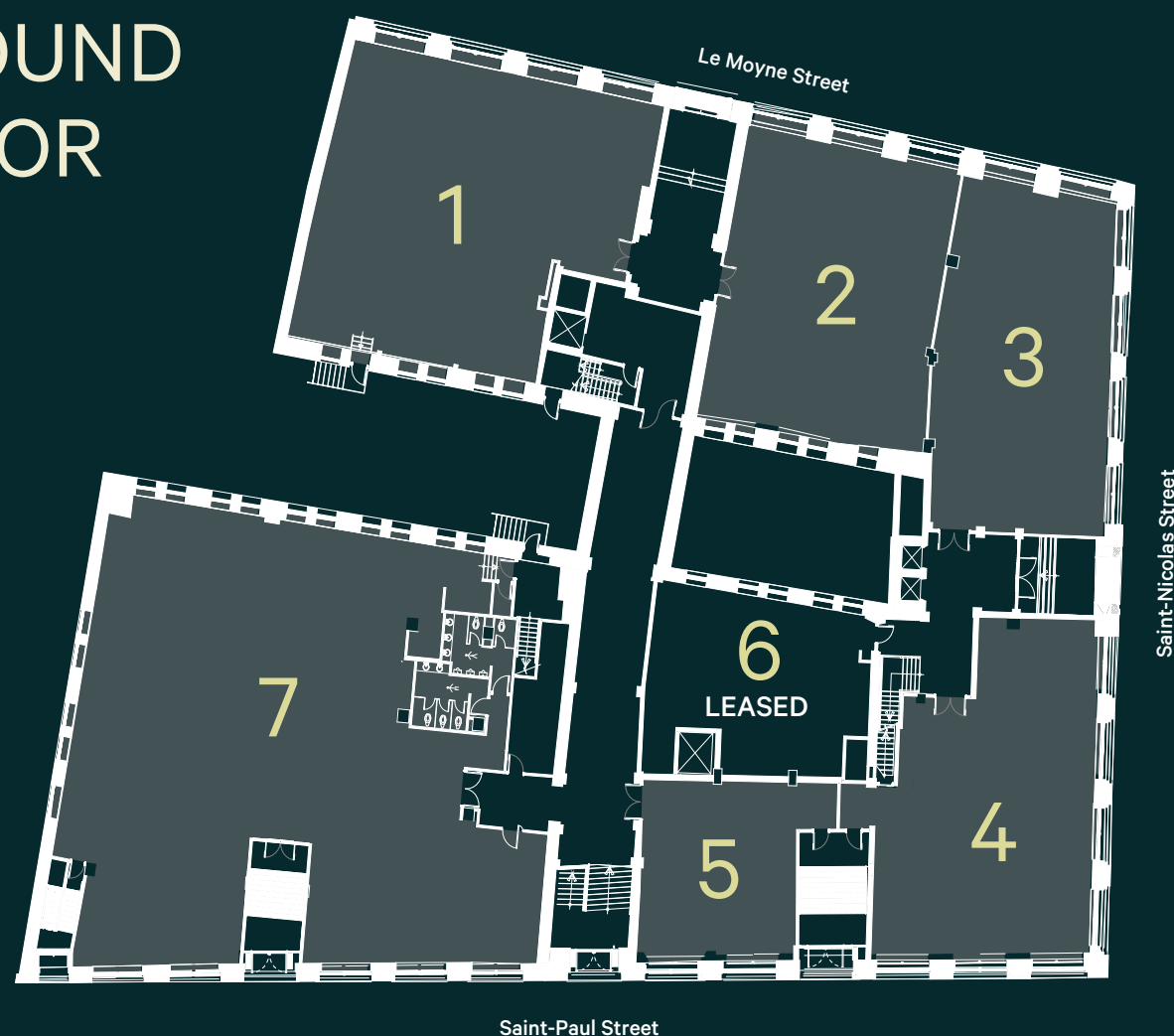


Possibility for a restaurant for suites: 1, 2, 4, 5, and 7

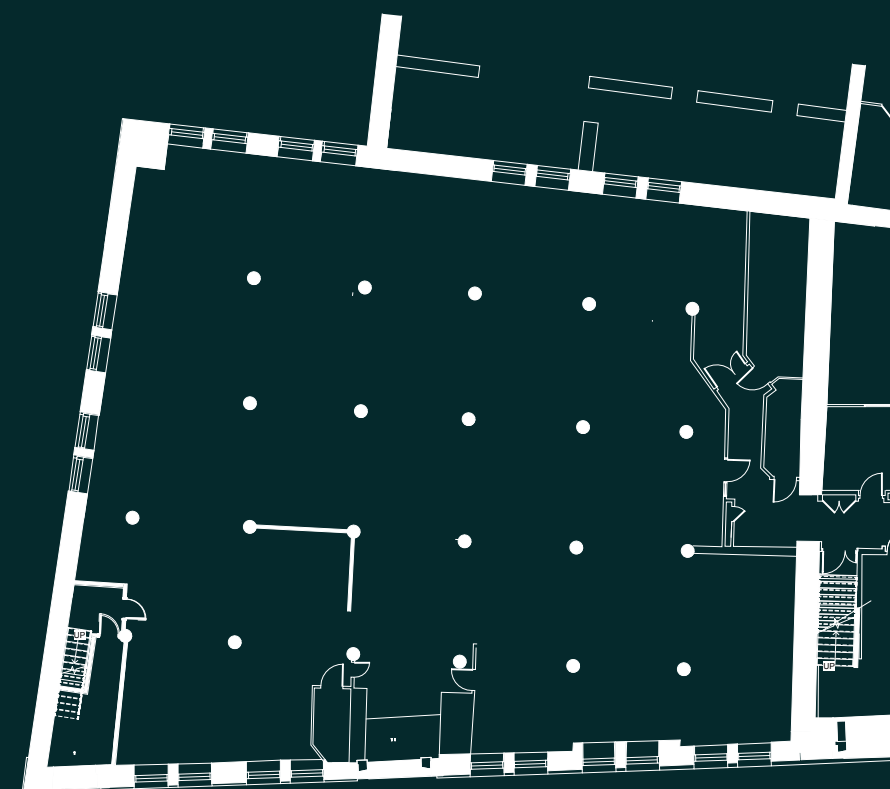


Available on September 15th, 2025

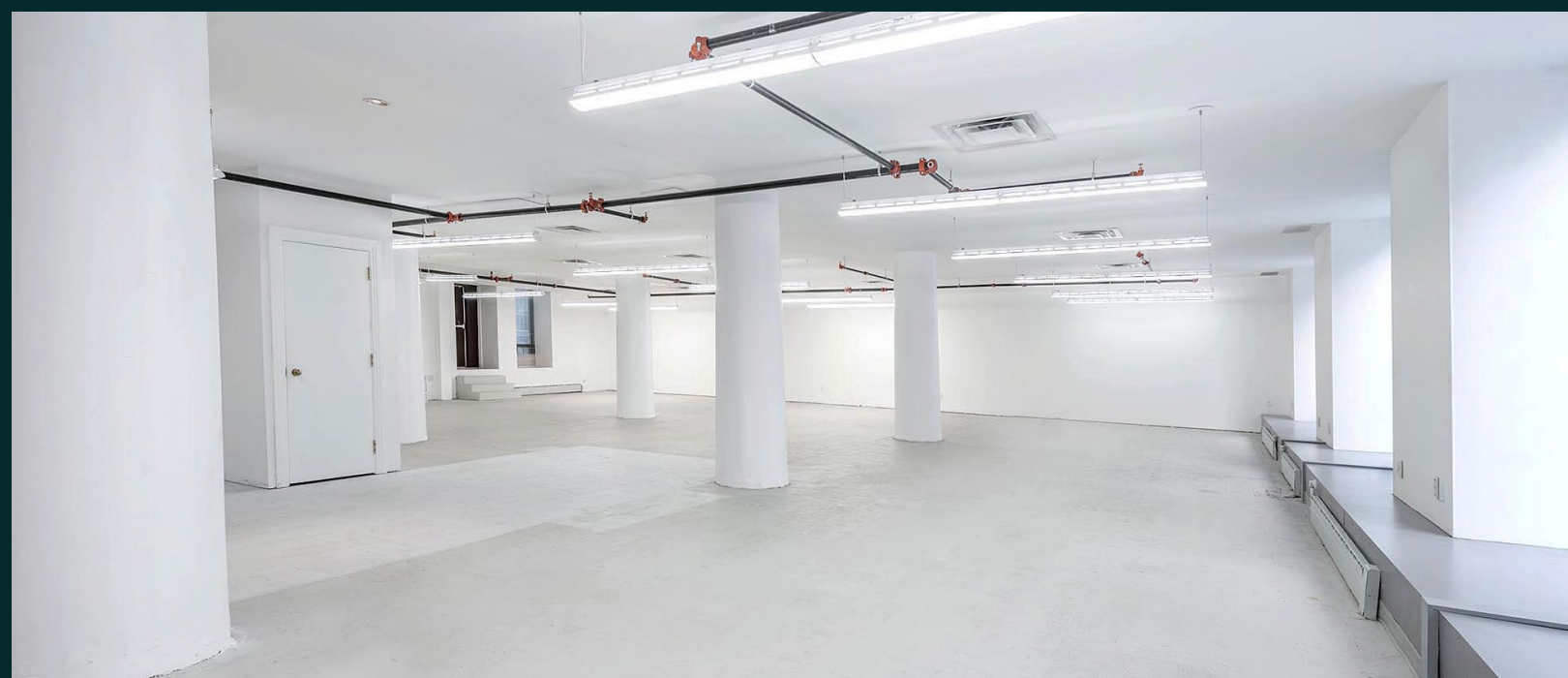
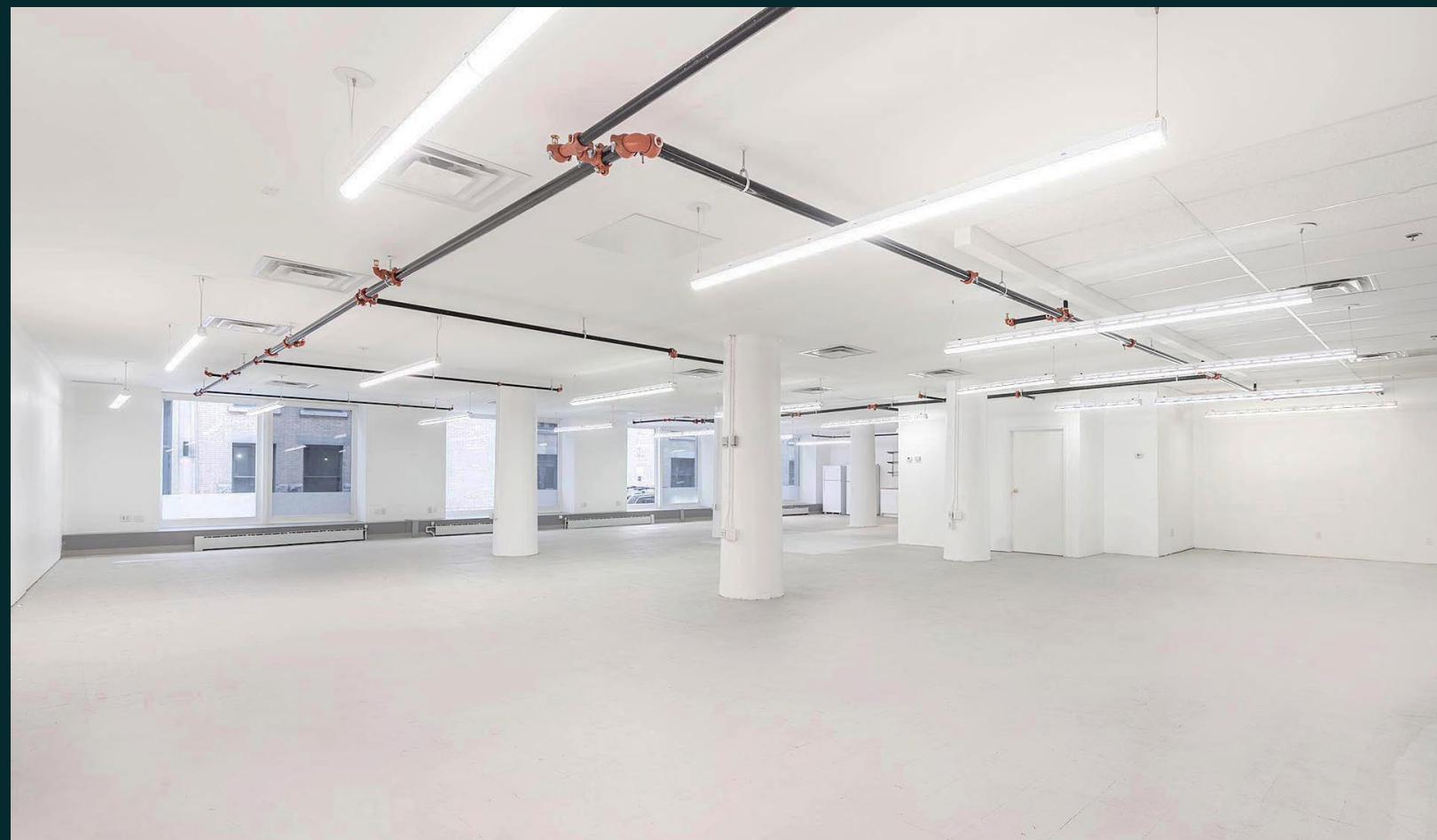
GROUND FLOOR



BASEMENT



Property Details



Located on Saint-Nicolas Street between Saint-Pierre and Le Moyne streets



The space benefits from natural light



7-min walk to the Place-d'Armes metro station



Numerous amenities located in close proximity

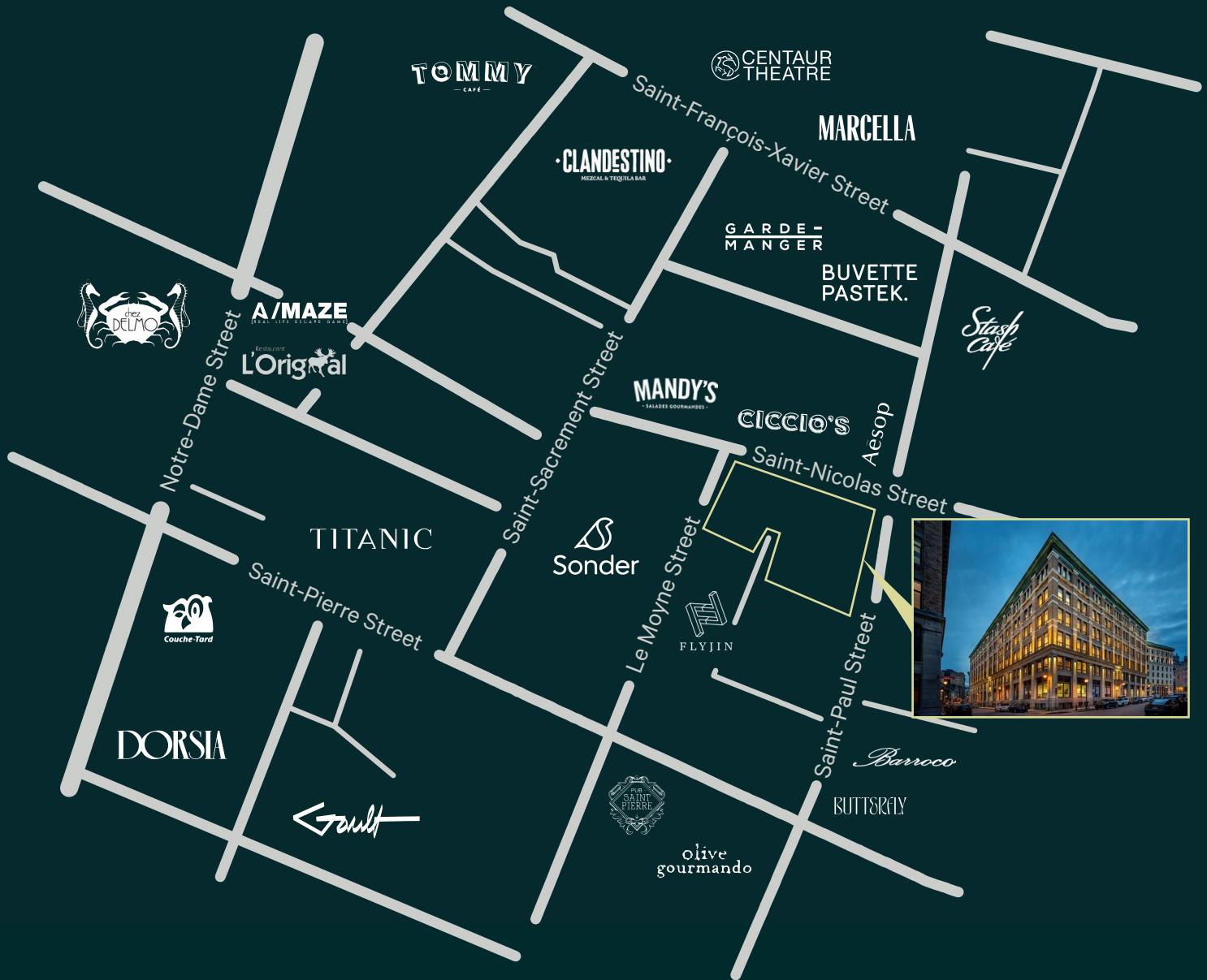


15' ceiling height



Neighbouring tenants include Flyjin, Mandy's, Barroco, and Olive et Gourmando

Map



Contact Us

Christopher Rundle
Vice President
Real Estate Broker
+1 514 375 0818
christopher.rundle@cbre.com

Bryan Greenberg
Associate Vice President
Commercial Real Estate Broker
+1 514 375 2507
bryan.greenberg@cbre.com

Amanda Angela Herbu
Associate
Commercial Real Estate Broker
+1 514 375 0456
amanda.herbu@cbre.com

CBRE Limited, Real Estate Agency | 1250 René-Lévesque Blvd West, Suite 2800 | Montréal, Québec H3B 4W8 | +1 514 849 6000 | www.cbre.ca

This disclaimer shall apply to CBRE Limited, Real Estate Agency, and to all other divisions of the Corporation; to include all employees and independent contractors ("CBRE"). The information set out herein, including, without limitation, any projections, images, opinions, assumptions and estimates obtained from third parties (the "Information") has not been verified by CBRE, and CBRE does not represent, warrant or guarantee the accuracy, correctness and completeness of the Information. CBRE does not accept or assume any responsibility or liability, direct or consequential, for the Information or the recipient's reliance upon the Information. The recipient of the Information should take such steps as the recipient may deem necessary to verify the Information prior to placing any reliance upon the Information. The Information may change and any property described in the Information may be withdrawn from the market at any time without notice or obligation to the recipient from CBRE. CBRE and the CBRE logo are the service marks of CBRE Limited and/or its affiliated or related companies in other countries. All other marks displayed on this document are the property of their respective owners. All Rights Reserved. Mapping Sources: Canadian Mapping Services canadamapping@cbre.com; DMTI Spatial, Environics Analytics, Microsoft Bing, Google Earth.