

JEWEL BOX OFFICE BUILDING

בסייד

AVAILABLE IN CENTURY CITY

10340 SANTA MONICA BLVD, LOS ANGELES, CA 90025



COMMERCIAL
ASSET GROUP

Jeffrey E. Resnick

310.922.1717

jresnick@cagre.com

Lic. 00405333

Adam Funk

310.666.0124

afunk@cagre.com

Lic. 02129715

SPACE INFORMATION

LEASE RATE

\$11,500/MO

LEASE TYPE

FULL SERVICE GROSS

LEASE TERM

5-10 YEARS

AVAILABLE SPACE

±3,700 SF

SPACE CONDITION

PLUG & PLAY, MOVE IN READY

PARKING

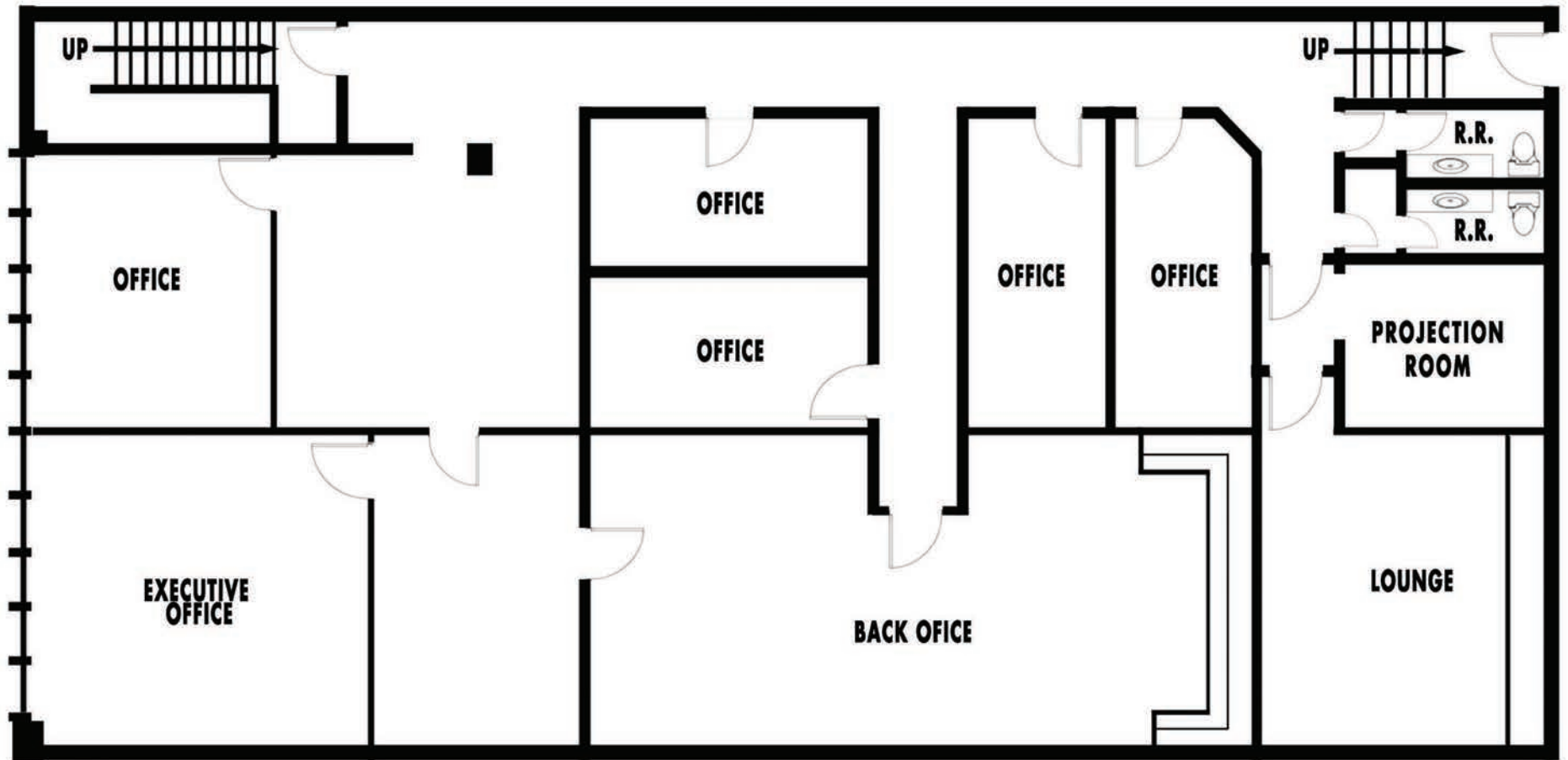
8 PRIVATE GATED SPACES FREE

These materials are based on information and content provided by others, which we believe are accurate. No guarantee, warranty or representation is made by Commercial Asset Group, Inc. or its personnel. All interested parties must independently verify accuracy and completeness. As well, any projections, assumptions, opinion, or estimates are used for example only and do not represent the current or future performance of the identified property. Your tax, financial, legal and toxic substance advisors should conduct a careful investigation of the property and its suitability for your needs, including land use limitations. The property is subject to prior lease, sale, change in price, or withdrawal from the market without notice.

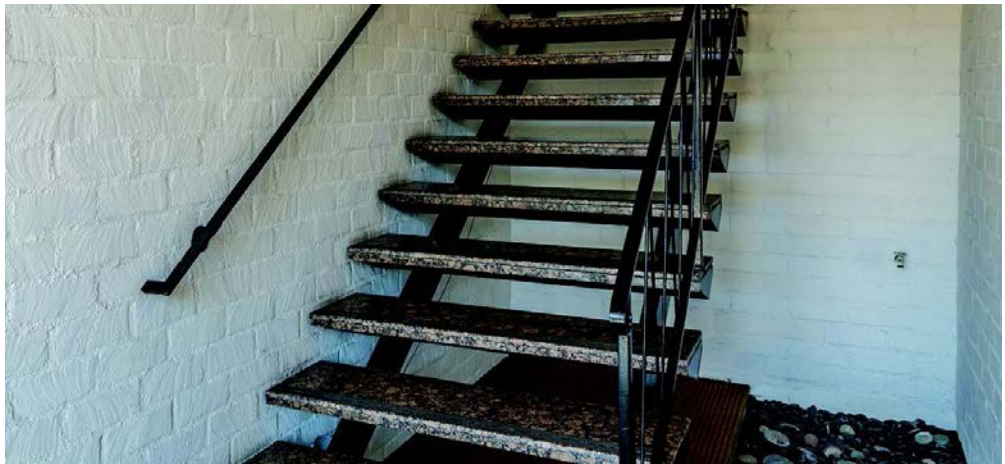
- Opportunity to lease your own private building for any number of professional uses
- Century City office lease opportunity steps from Westfield Mall
- Top building signage rights available
- 8 private and gated parking spaces
- On-site management
- Turn-key and ready to occupy
- Wired and cabled
- Long-term ownership

10340 SANTA MONICA BOULEVARD, LOS ANGELES, CA 90025

FLOOR PLAN



INTERIOR PHOTOS



ADDITIONAL PHOTOS



NEARBY AMENITIES

10340
SANTA MONICA BLVD

CENTURY CITY

Fairmont
CENTURY PLAZA
LOS ANGELES


INTERCONTINENTAL
HOTELS & RESORTS


THE LOS ANGELES
COUNTRY CLUB

THE PENINSULA
BEVERLY HILLS


WALDORF ASTORIA
BEVERLY HILLS

Westfield
CENTURY CITY

10340 SANTA MONICA BOULEVARD, LOS ANGELES, CA 90025



Jeffrey E. Resnick

310.922.1717

jresnick@cagre.co

m Lic. 00405333

Adam Funk

310.666.0124

afunk@cagre.com

Lic. 02129715

Commercial Asset Group

1801 Century Park East, Ste 1550

Los Angeles, CA 90067

P 310.275.8222 F 310.275.8223

www.cagre.com Lic. 01876070



**COMMERCIAL
ASSET GROUP**