

LEGEND:

- BFP - BACK FLOW PREVENTOR
- C&G - CURB & GUTTER
- CB - CATCH BASIN
- CP - CALCULATED POINT
- CD - CLEAR DIRT
- DB - DEED BOOK
- ECM - EXISTING CONCRETE MONUMENT
- EIP - EXISTING IRON PIPE
- EBR - EXISTING IRON ROD
- EMM - EXISTING METAL MONUMENT
- EV - EXISTING NAIL
- EU - END UNKNOWN
- FP - FIRE HYDRANT
- GF - GAS VALVE
- GB - GUY WIRE
- HW - HEADWALL
- LP - LIGHT POLE
- MS - MEASURED
- MB - MAP BOOK
- N.C.S. - NATIONAL GEODETIC SURVEY
- NBR - NEW IRON ROD
- AN - NEW NAIL
- OHANG - OVERHANG
- PP - POWER BOX
- PN - PARCEL IDENTIFICATION NUMBER
- PM - POWER METER
- PP - POWER POLE
- PG - PAGE
- PPC - PLASTIC PIPE
- RR - RECORDED
- R/W - RIGHT-OF-WAY
- RCF - REINFORCED CONCRETE PIPE
- RR - RETAINING WALL
- SDMH - STORM DRAIN MANHOLE
- SSMH - SANITARY SEWER MANHOLE
- TI - TOTAL
- TR - TELEPHONE BOX
- TERR - TERRACOTTA PIPE
- WB - WATER BOX
- WM - WATER METER
- WV - WATER VALVE

LINE LEGEND:

- EASEMENT
- PROPERTY LINE (NOT SURVEYED)
- RIGHT-OF-WAY
- RIGHT-OF-WAY (NOT SURVEYED)

UTILITIES:

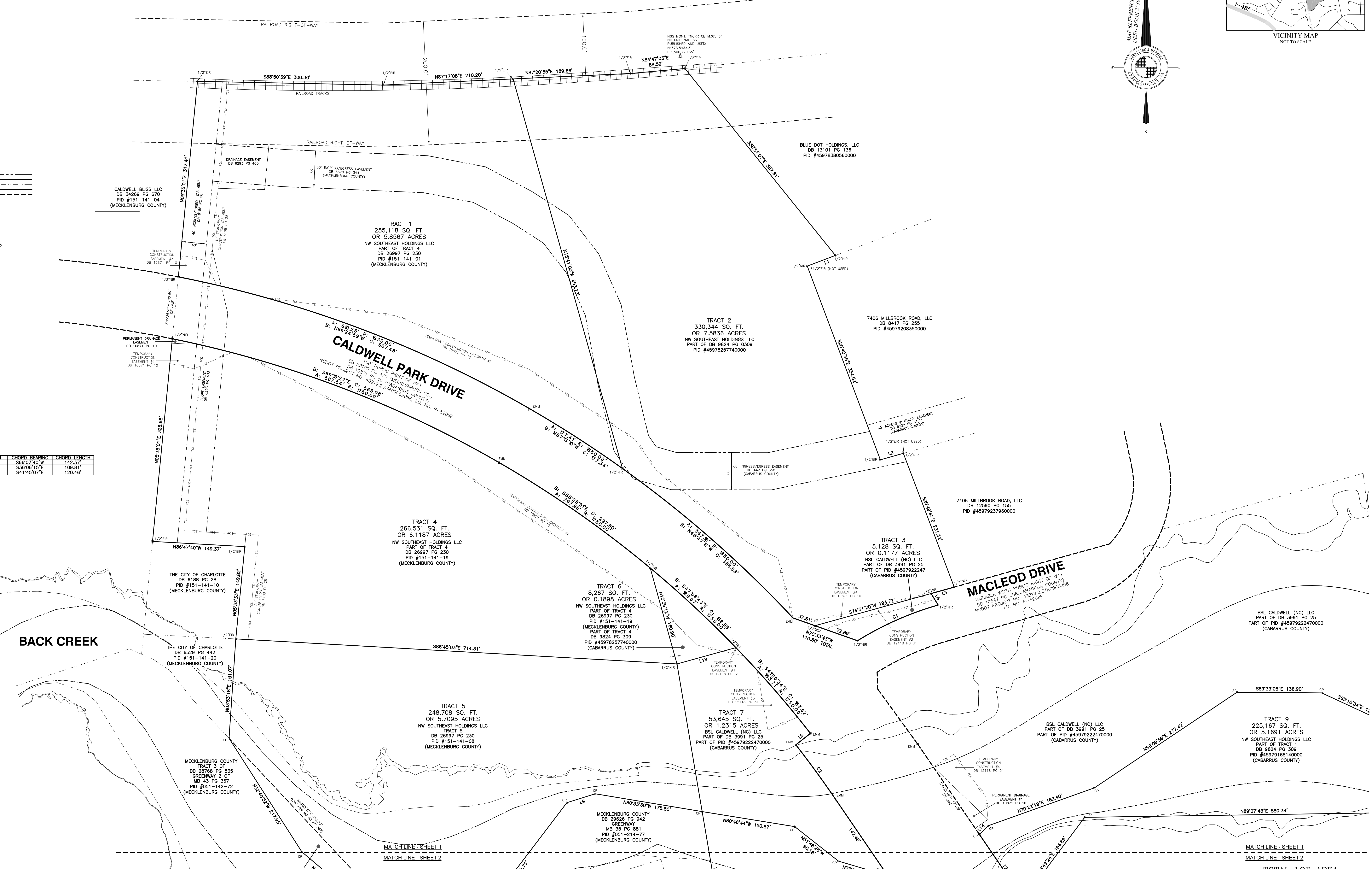
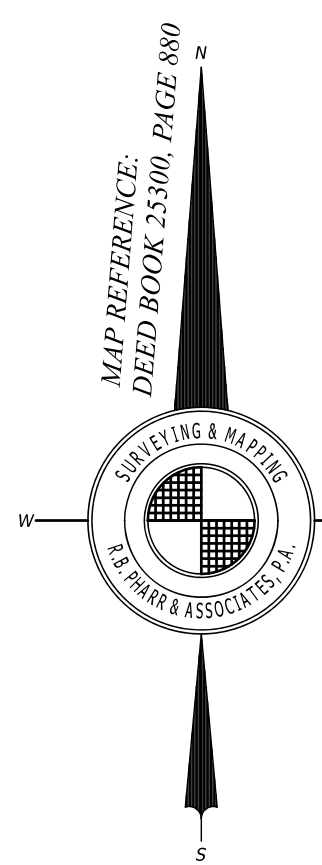
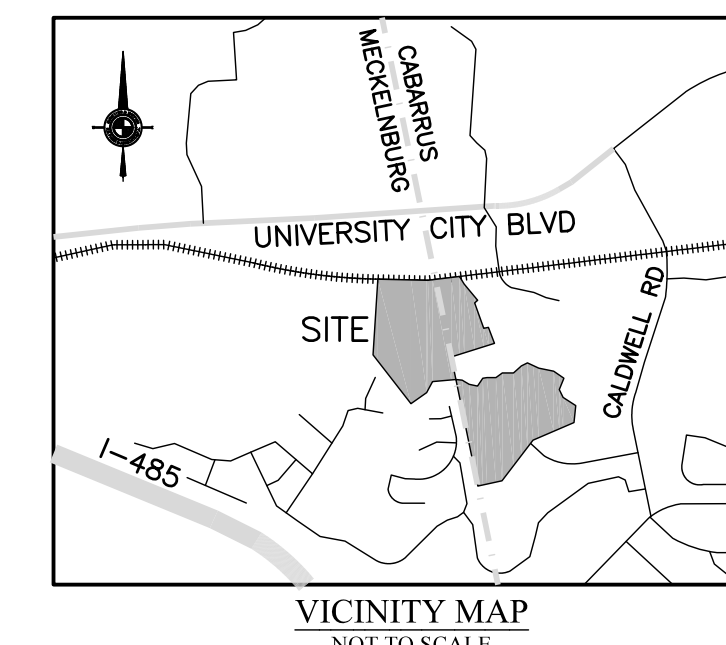
- POWER**
- DUKE POWER ENERGY
- 1-800-777-9888
- TELEPHONE**
- BELL SOUTH TELECOMMUNICATIONS
- 1-888-774-6999
- WATER & SEWER**
- CHAR-MECK. UTILITY DEPT. (CM/MD)
- (704) 336-2344 WATER
- (704) 337-6664 SEWER
- GAS**
- PIEDMONT NATURAL GAS CO.
- 1-800-732-7394
- CABLE TELEVISION**
- TIME WARNER CABLE
- 1-800-892-2233

LINE TABLE:

LINE	BEARING	DISTANCE
L1	S89°12'48"W	48.63
L2	N74°31'20"W	38.85
L3	S74°31'20"W	38.85
L4	S31°44'28"W	21.78
L5	N51°40'00"W	29.93
L6	N89°34'31"E	49.94
L7	S35°11'19"E	29.50
L8	S86°05'01"W	11.39
L9	S74°38'18"W	48.09
L10	N63°29'00"E	60.00
L11	N35°02'45"W	27.14
L12	N34°29'22"W	45.88
L13	N55°43'50"W	49.91
L14	N45°14'00"E	19.84
L15	S06°14'00"W	49.91
L16	S56°38'18"W	62.40
L17	S45°49'13"W	48.70
L18	N74°31'20"E	98.76

CURVE TABLE:

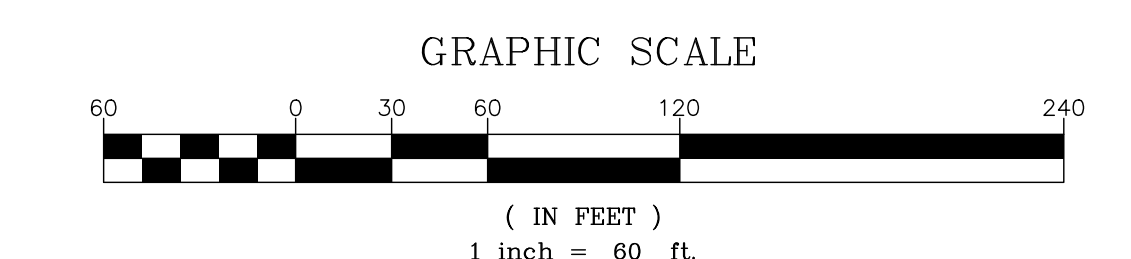
CURVE	RADIUS	ARC LENGTH	CHORD BEARING	CHORD LENGTH
C1	143.00	38.07	S86°04'00"W	142.93
C2	1720.00	109.83	S36°06'18"E	109.81
C3	680.00	120.82	S41°48'07"E	120.46



BACK CREEK

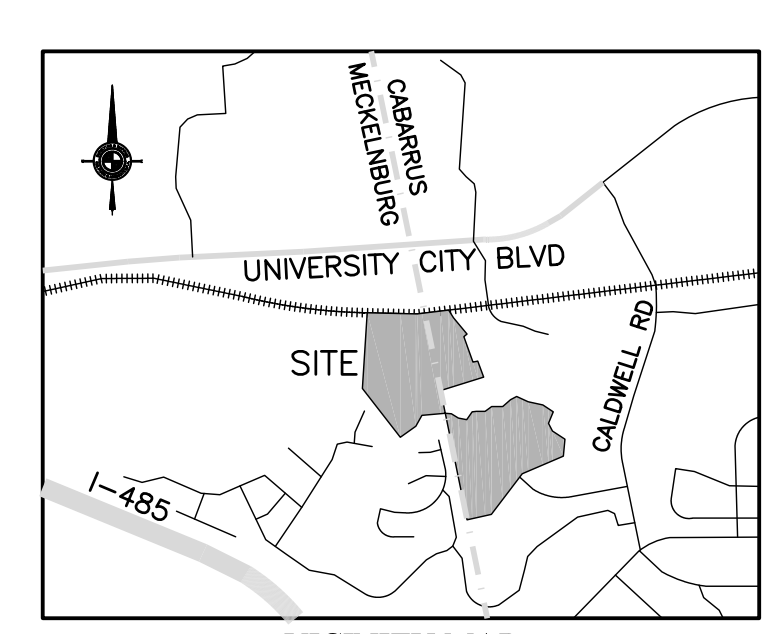
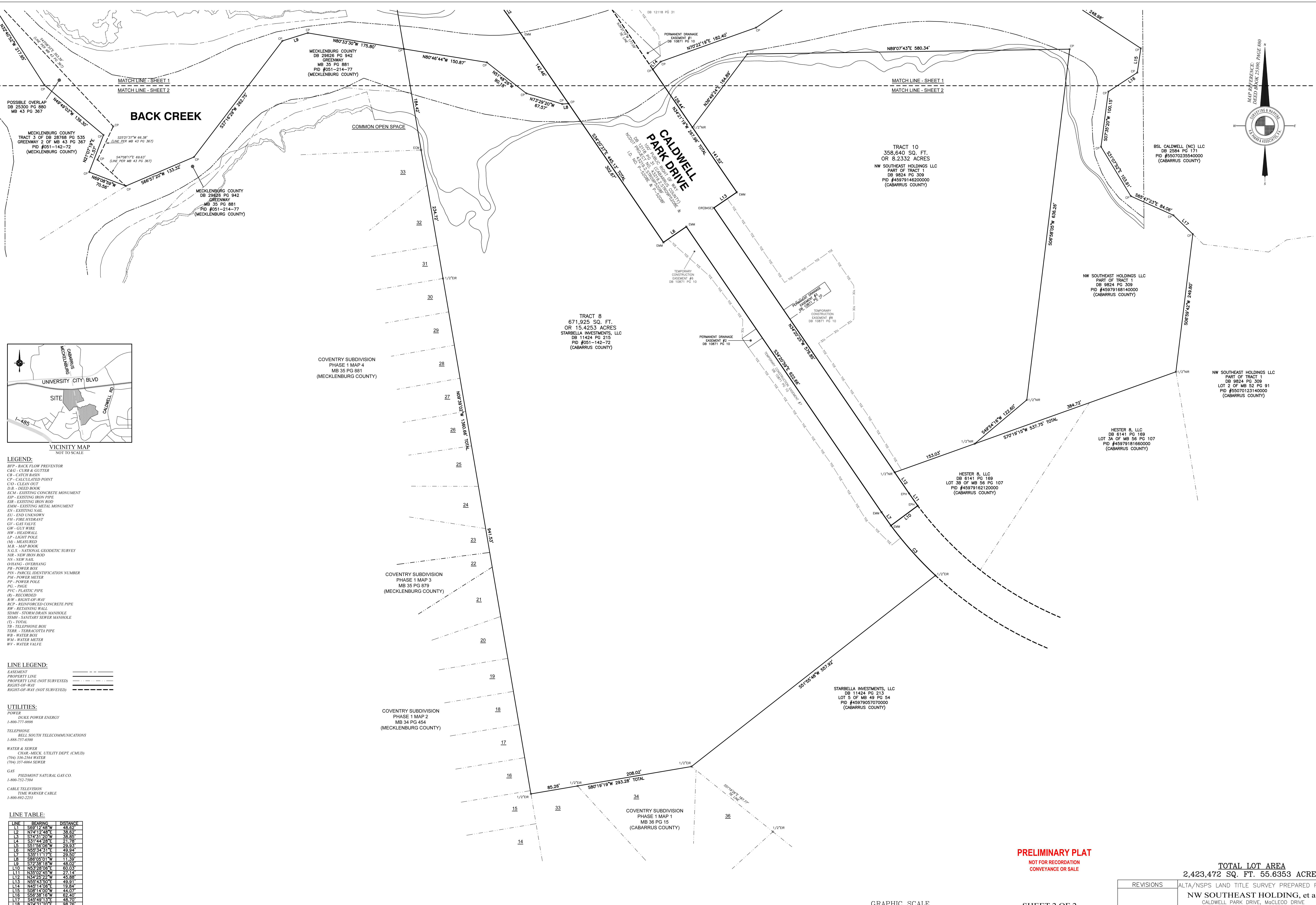
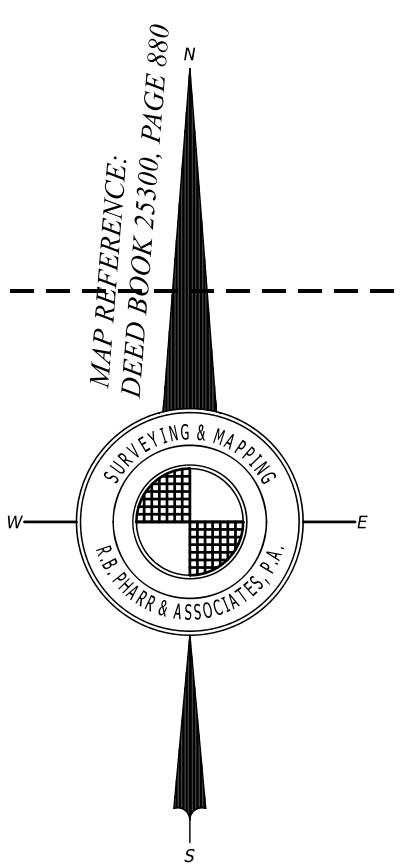
TOTAL LOT AREA
2,423,472 SQ. FT. 55.6353 ACRES

PRELIMINARY PLAT
NOT FOR RECORDATION
CONVEYANCE OR SALE



SHEET 1 OF 2
NOTE: NOT A VALID SURVEY WITHOUT BOTH SHEETS.
PRELIMINARY

REVISIONS	ALTA/NSPS LAND TITLE SURVEY PREPARED FOR:
	NW SOUTHEAST HOLDING, et al CALDWELL PARK DRIVE, MACLEOD DRIVE- MECKLENBURG COUNTY, CABARRUS COUNTY NORTH CAROLINA
	R.B. PHARR & ASSOCIATES, P.A. SURVEYING & MAPPING LICENSE NO. 1471 969 E. 7th STREET, SUITE 200, CHARLOTTE, NC 28204 TEL. (704) 376-2186
DRAWN: TLM	SCALE: 1" = 60'
REVISION: RBP	DATE: DECEMBER 15, 2022
	JOB NO. 94697



- LEGEND:**
- BFP - BACK FLOW PREVENTOR
 - CBG - CURB & GUTTER
 - CB - CATCH BASIN
 - CP - CALCULATED POINT
 - CO - CLEAN OUT
 - D.B. - DEED BOOK
 - ECM - EXISTING CONCRETE MONUMENT
 - EIP - EXISTING IRON PIPE
 - EIR - EXISTING IRON ROD
 - EMM - EXISTING METAL MONUMENT
 - EN - EXISTING NAIL
 - EU - END UNKNOWN
 - FH - FIRE HYDRANT
 - GV - GAS VALVE
 - GW - GUY WIRE
 - HW - HEADWALL
 - LP - LIGHT POLE
 - MD - MEASURED
 - MB - MAP BOOK
 - N.G.S. - NATIONAL GEODETIC SURVEY
 - NIR - NEW IRON ROD
 - NX - NEW NAIL
 - OHANG - OVERHANG
 - PR - POWER POLE
 - PIN - PARCEL IDENTIFICATION NUMBER
 - PM - POWER METER
 - PP - POWER POLE
 - PG - PAGE
 - PIC - PLASTIC PIPE
 - (R) - RECORDED
 - R/W - RIGHT-OF-WAY
 - RCP - REINFORCED CONCRETE PIPE
 - RW - RETAINING WALL
 - SDMH - STORM DRAIN MANHOLE
 - SSMH - SANITARY SEWER MANHOLE
 - TS - TOTAL
 - TS - TELEPHONE BOX
 - TER - TERRACOTTA PIPE
 - WM - WATER METER
 - WV - WATER VALVE

- LINE LEGEND:**
- EASEMENT
 - PROPERTY LINE (NOT SURVEYED)
 - RIGHT-OF-WAY
 - RIGHT-OF-WAY (NOT SURVEYED)

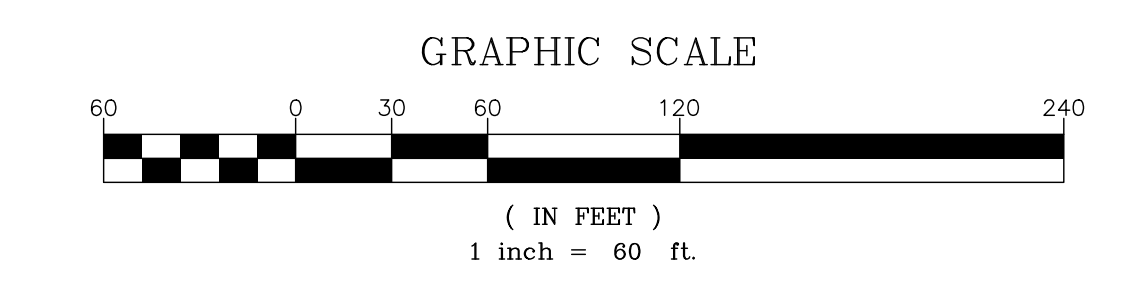
- UTILITIES:**
- POWER
 - DUKE POWER ENERGY
 - 1-800-777-9898
 - TELEPHONE
 - BELL SOUTH TELECOMMUNICATIONS
 - 1-888-757-6300
 - WATER & SEWER
 - CHAR-MECK. UTILITY DEPT. (CMUD)
 - (704) 336-2564 WATER
 - (704) 551-6064 SEWER
 - GAS
 - PEDMONT NATURAL GAS CO.
 - 1-800-552-7594
 - CABLE TELEVISION
 - TIME WARNER CABLE
 - 1-800-892-2253

LINE TABLE:

LINE	BEARING	DISTANCE
L1	S89°12'48" W	48.55'
L2	N74°12'48" E	48.55'
L3	S74°31'20" W	38.85'
L4	S31°44'58" E	11.72'
L5	S81°36'08" W	21.93'
L6	N55°34'31" E	49.94'
L7	S85°11'17" E	11.39'
L8	S86°05'01" W	11.39'
L9	S72°38'18" W	49.94'
L10	N52°28'08" E	60.00'
L11	N35°02'45" W	27.14'
L12	N42°22'22" W	43.58'
L13	N59°43'50" E	49.91'
L14	N45°14'08" E	13.84'
L15	S08°14'00" W	44.07'
L16	S06°38'16" W	62.40'
L17	S45°49'13" E	48.70'
L18	N74°31'20" E	98.76'

CURVE TABLE:

CURVE	RADIUS	ARC LENGTH	CHORD BEARING	CHORD LENGTH
C1	315.00'	143.03'	S86°07'42" W	142.97'
C2	1720.00'	109.81'	S88°06'18" E	109.81'
C3	680.00'	120.82'	S41°45'07" E	120.40'



PRELIMINARY PLAT
NOT FOR RECORDATION
CONVEYANCE OR SALE

SHEET 2 OF 2
NOTE: NOT A VALID
SURVEY WITHOUT
BOTH SHEETS.

PRELIMINARY

TOTAL LOT AREA
2,423,472 SQ. FT. 55.6353 ACRES

REVISIONS	ALTA/NSPS LAND TITLE SURVEY PREPARED FOR:
	NW SOUTHEAST HOLDING, et al CALDWELL PARK DRIVE, MCLEOD DRIVE, MECKLENBURG COUNTY, CABARRUS COUNTY NORTH CAROLINA
	R.B. PHARR & ASSOCIATES, P.A. SURVEYING & MAPPING LICENSE NO. 2-1471 969 E. 7th STREET, SUITE 100, CHARLOTTE, NC 28004 TEL. (704) 376-2186
CREW: RBP	SCALE: 1" = 60'
DATE: DECEMBER 15, 2022	JOB NO. 94697