

Rare El Monte, CA, Location  
164,284 SF, 30' Clear Freestanding Warehouse  
Secured, Concrete Truck Court w/ Trailer Parking  
Climate Controlled Warehouse, 3,000 Amps



## For Lease - Class A Distribution Building

4187 Temple City Blvd | El Monte, CA  
(10), (710), (605) and (210) Freeway Access



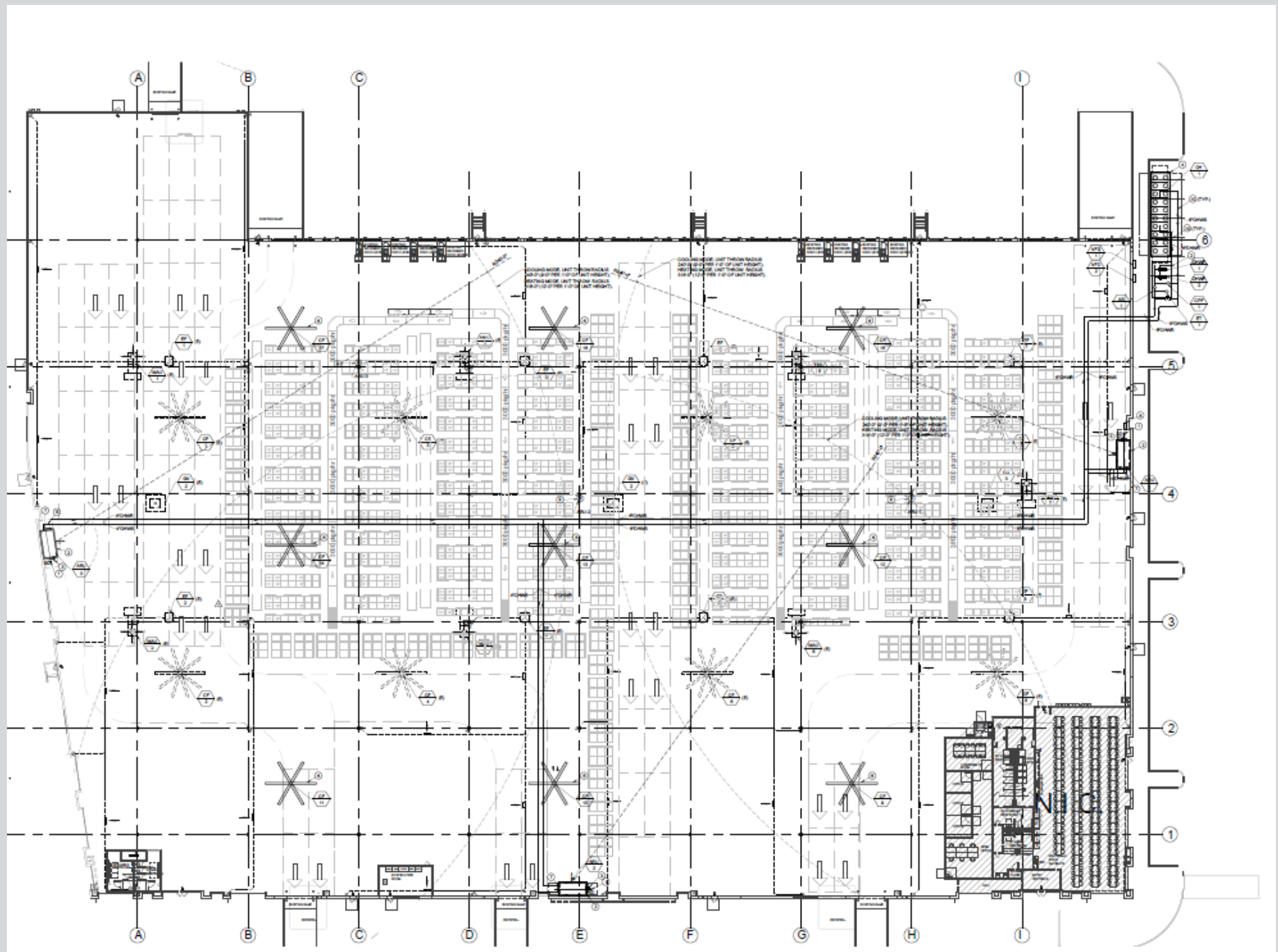
## PROPERTY HIGHLIGHTS

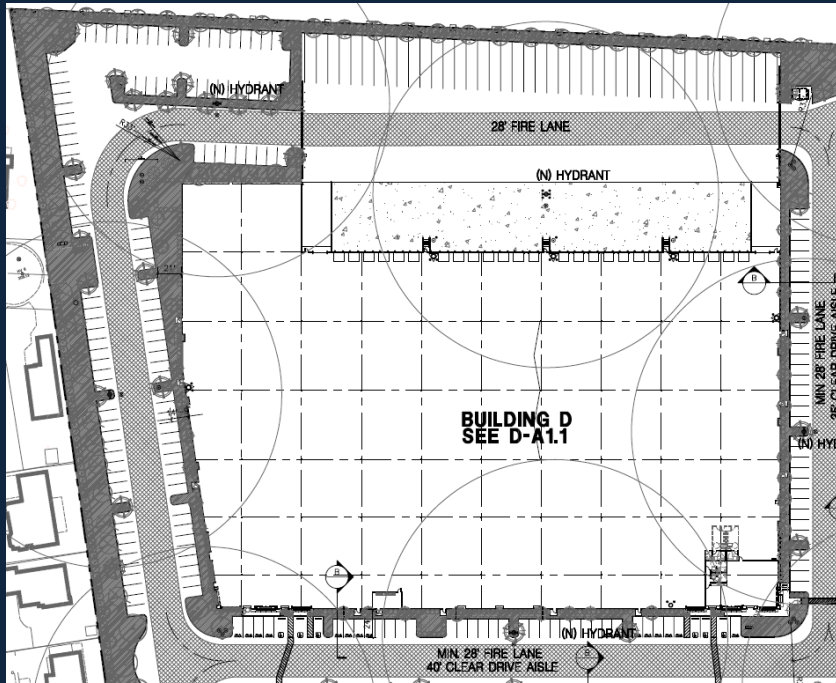
- Freestanding Class A ± 164,284sf Building on ± 7.4 Acres
- 2016 Construction
- 30' Clear Height
- ± 8,217sf High-End Offices
- 21 Existing Dock High Positions (13 Hydraulic & 2 Load Levelers; 13 Dock Seals & Dock Locks)
- 8 Grade-Level Doors (2 Convertible to Additional Docks)
- 42 Trailer Parking Stalls, 196 Auto Stalls
- Access to (10), (605), (710) & (210) Freeways
- ESFR (K-25) Fire Suppression System, & Air Handling System
- Climate Controlled Warehouse, Big Ass Fans
- Fully Secured & Concrete Yard
- 3,000 Amps (277/480V)
- Warehouse Restrooms
- Existing Material Handling System Potentially Available
- Institutionally Owned & Managed



# Floorplan

4187 Temple City Boulevard







## CONTACT:

### **Chris Tolles**

Executive Managing Director  
213 955 5129  
Chris.Tolles@cushwake.com  
License: 01459899

### **Erik Larson**

Executive Managing Director  
213 955 5126  
Erik.Larson@cushwake.com  
License: 01213790

### **Robin Dodson**

Executive Managing Director  
213 955 6460  
Robin.Dodson@cushwake.com  
License: 00956329

### **Maya Schirn**

Associate  
213 236 4931  
Maya.Schirn@cushwake.com  
License: 02237054



900 Wilshire Boulevard,  
Suite, 2400  
Los Angeles, CA 90017  
+1 213 955 5100  
License: 0061635

# nuveen

Cushman & Wakefield Copyright 2022. No warranty or representation, express or implied, is made to the accuracy or completeness of the information contained herein, and same is submitted subject to errors, omissions, change of price, rental or other conditions, withdrawal without notice, and to any special listing conditions imposed by the property owner(s). As applicable, we make no representation as to the condition of the property (or properties) in question.