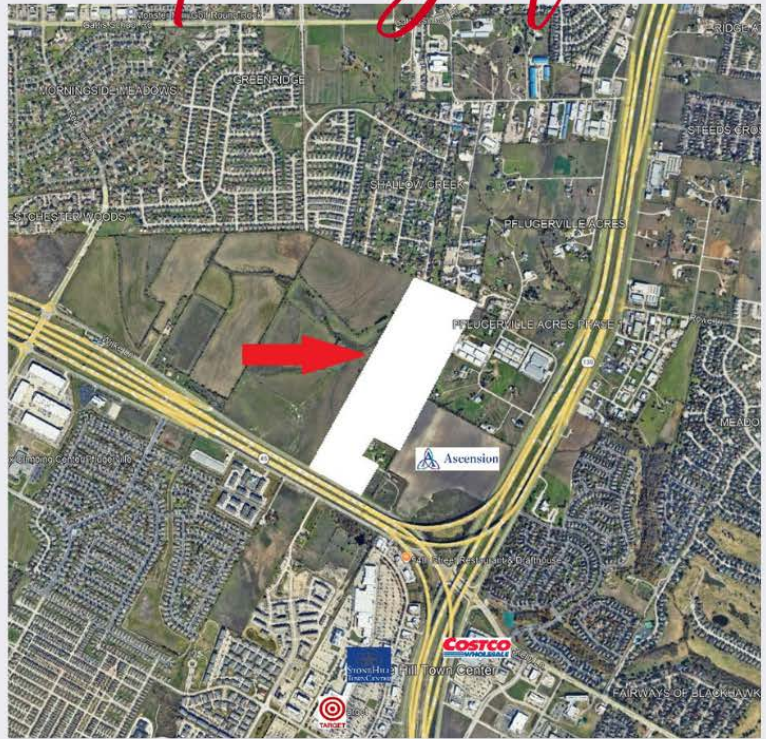


PLANNED DEVELOPMENT

For Sale!

81 ACRES CHISHOLM STATION

Toll 45 and Toll 130,
Pflugerville, TX 78660



HIGHLIGHTS

- 100 Vehicles p/day
- 160 building height
- 15 mins Samsung Taylor
- 10 mins Austin Exec Airport



ABOUT THIS PROPERTY

Chisholm Station promises to be Pflugerville’s top mixed-use development. Located along the Toll 130 and 45 corridor, the site provides easy access from almost 20% of the entire Austin MSA within a 30-minute drive. For more details about Chisholm Station, visit: www.chisholmstation.com

WATER 1600 FT TO THE WEST OF TRACT AND WASTEWATER 250 FT TO THE EAST

RICHARD GARY



+512-415-9367



richard@jwdevelopmentinc.com

