

PLYMOUTH PONDS I

MN
MPLS

3555 Holly Lane
Plymouth, MN



FOR LEASE

12,587 SF

Suite 10



LEASED BY





PROPERTY HIGHLIGHTS

- Convenient location near Plymouth City Center and retail development
- Quick access to Highway 55 and I-494
- Master-planned Business Park consisting of seven 24' clear buildings totaling more than 700,000 sf and one 18' clear, 83,000 sf showroom building

SPECIFICATIONS

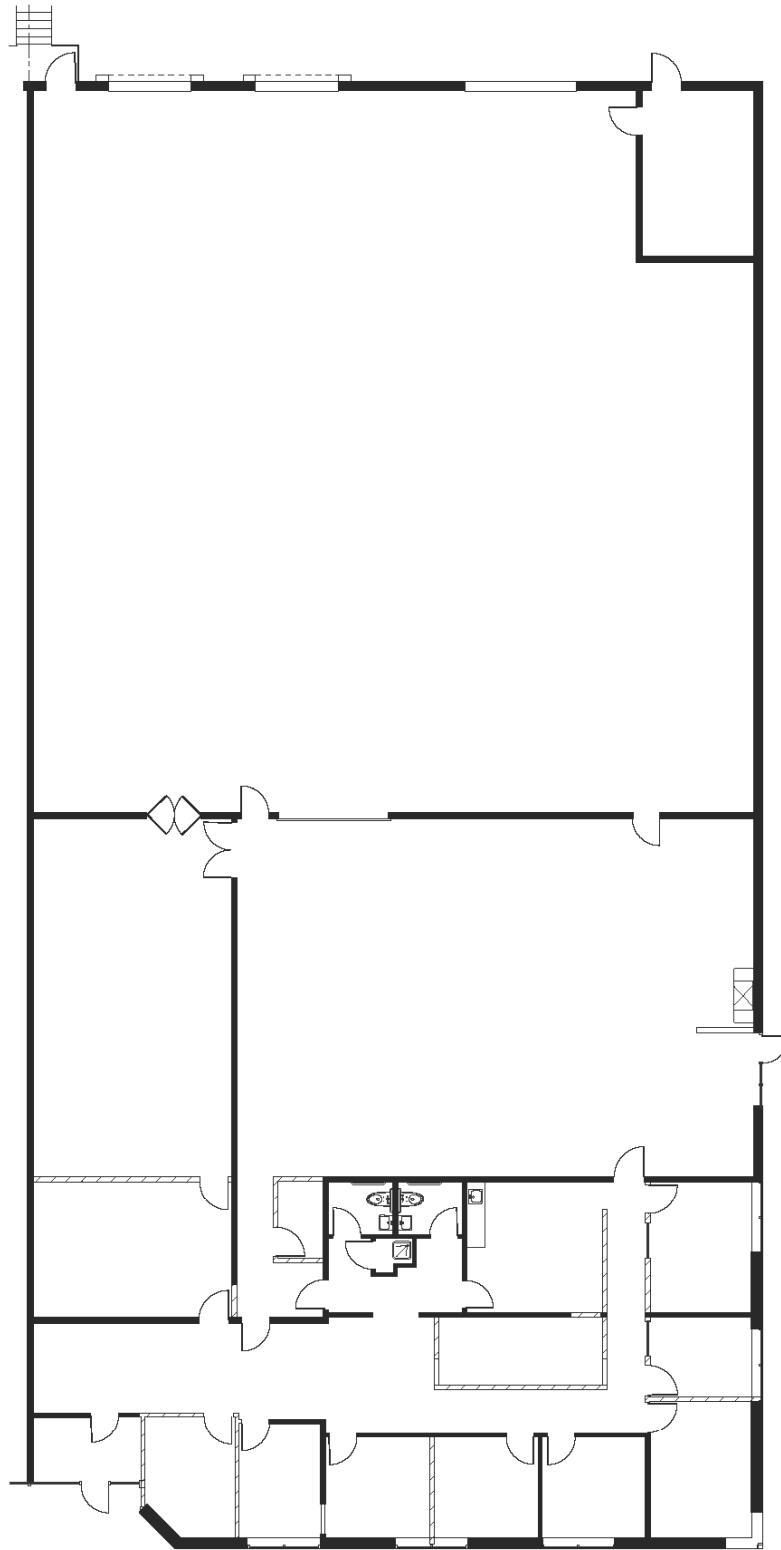
Building	76,463 SF Total
Available SF	2,625 SF Office 9,962 SF Lab/Warehouse 12,587 SF Total
Clear Height	24'
Lease Rates	Negotiable
Loading	2 Docks & 1 Drive-In
2026 Tax/CAM	\$5.90 PSF Total

Available May 1, 2026: Suite 10

2,625 SF Office

9,962 SF Lab/Warehouse

12,587 SF Total



CONTACT INFORMATION

3555 Holly Lane
Plymouth, MN

Brent Masica

Executive Managing Director
952 893 8231

brent.masica@cushwake.com

Jason Meyer

Executive Director
952 820 8735

jason.meyer@cushwake.com

This document is for informational purposes only and does not constitute an offer or acceptance of a lease. Any lease agreement must be in writing and signed by the landlord. No representations or warranties are made except as expressly stated in a signed lease. Information is provided "as is" and may be subject to errors or change without notice.



LEASED BY

