

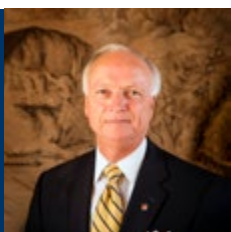


9182 Boyd Cooper Parkway
Montgomery, AL 36117

FOR LEASE

Lease Price	\$1,500.00/Month
Available Space	+/- 1,006 S.F.
Building Size	+/- 5,272 S.F.
Zoning	B-2
Parking	Adequate on Site
Best Use	Office/Retail/General Business
Utilities	Provided by Tenant
Possession	Immediate
Listing Type	Exclusive

+/- 1,006 S.F. office or retail space located on Boyd Cooper Parkway. Other occupants of this building are Allstate Insurance and Thrive Family Chiropractic. Excellent access to I-85 at Exit 11, as well as hotels, restaurants, retail and other businesses on Eastchase Parkway. Contact John Stanley, CCIM, for more information at (334) 271-2475.



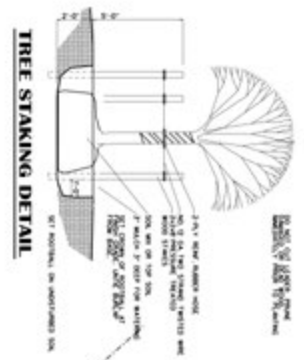
John C. Stanley, CCIM
John Stanley & Associates, Inc.
4747 Woodmere Blvd. ■ Montgomery, AL 36106
Tel: (334) 271-2475 ■ Fax: (334) 271-2421
jstanley@johnstanleyassociates.com
www.johnstanleyassociates.com



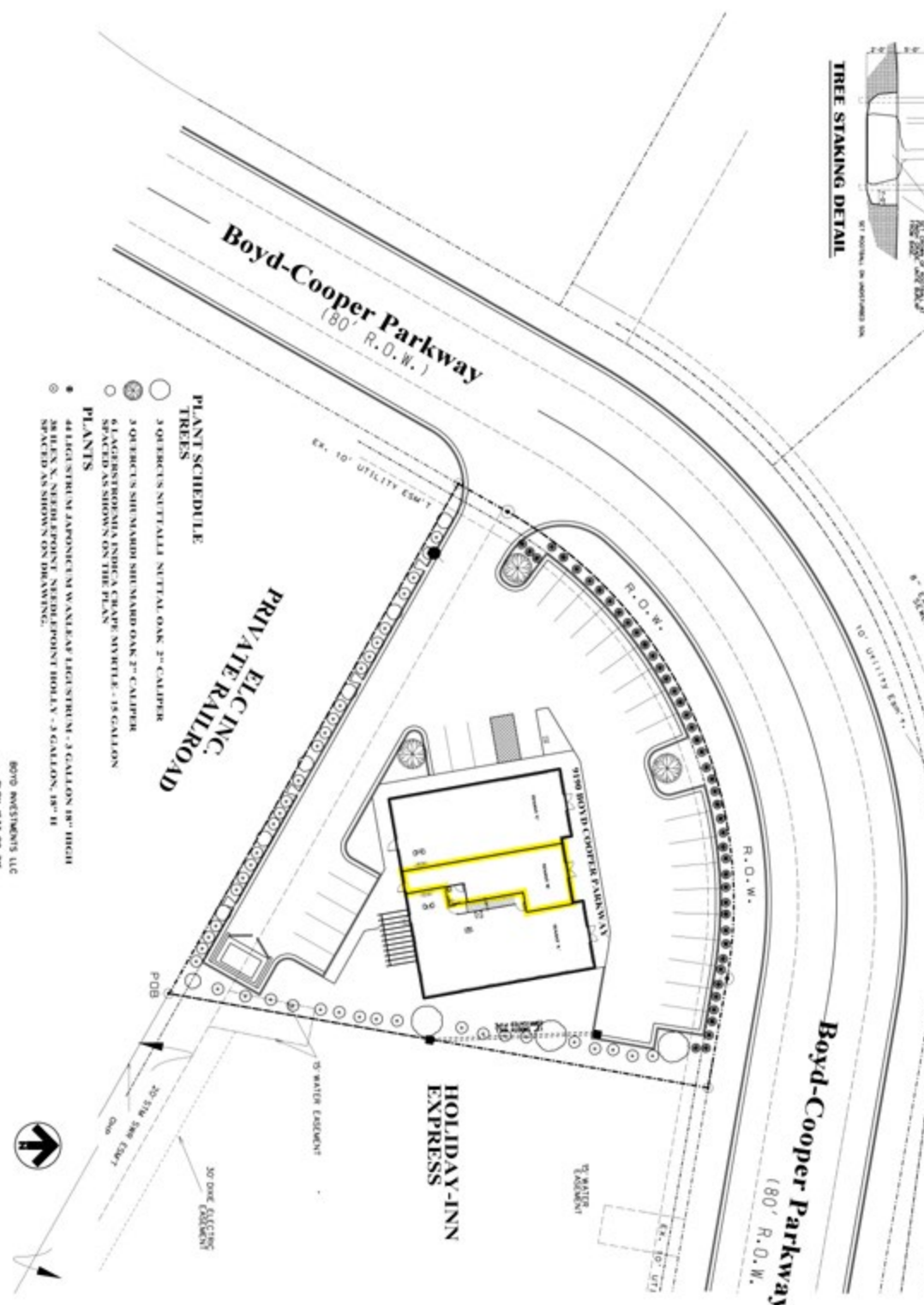
TOTAL 1ST FLOOR - 5272.0

FLOOR PLAN

SCALE 3/16" = 1'-0"



- LANDSCAPING NOTES**
1. ALL CONSTRUCTION SHALL BE IN ACCORDANCE WITH THE CITY OF MONTGOMERY, ALABAMA.
 2. THE LANDSCAPING SHALL BE INSTALLED IN ACCORDANCE WITH THE CITY OF MONTGOMERY, ALABAMA.
 3. THE LANDSCAPING SHALL BE INSTALLED IN ACCORDANCE WITH THE CITY OF MONTGOMERY, ALABAMA.
 4. THE LANDSCAPING SHALL BE INSTALLED IN ACCORDANCE WITH THE CITY OF MONTGOMERY, ALABAMA.
 5. THE LANDSCAPING SHALL BE INSTALLED IN ACCORDANCE WITH THE CITY OF MONTGOMERY, ALABAMA.
 6. THE LANDSCAPING SHALL BE INSTALLED IN ACCORDANCE WITH THE CITY OF MONTGOMERY, ALABAMA.
 7. THE LANDSCAPING SHALL BE INSTALLED IN ACCORDANCE WITH THE CITY OF MONTGOMERY, ALABAMA.
 8. THE LANDSCAPING SHALL BE INSTALLED IN ACCORDANCE WITH THE CITY OF MONTGOMERY, ALABAMA.
 9. THE LANDSCAPING SHALL BE INSTALLED IN ACCORDANCE WITH THE CITY OF MONTGOMERY, ALABAMA.
 10. THE LANDSCAPING SHALL BE INSTALLED IN ACCORDANCE WITH THE CITY OF MONTGOMERY, ALABAMA.



- PLANT SCHEDULE**
- TREES**
- 1. 3 ORBERGEN'S NITTALL NITTALL OAK - 2" CALIPER
 - 2. 3 ORBERGEN'S SHIMMARD SHIMMARD OAK - 2" CALIPER
 - 3. 6 LAGERTROMMIA INDECA CRAPPE MYRTLE - 15 GALLON
 - 4. 12 LAGERTROMMIA INDECA CRAPPE MYRTLE - 15 GALLON
- PLANTS**
- 1. 41 LAGERTROMMIA INDECA CRAPPE MYRTLE - 3 GALLON 18" HIGH
 - 2. 36 LAGERTROMMIA INDECA CRAPPE MYRTLE - 3 GALLON 18" HIGH
 - 3. 36 LAGERTROMMIA INDECA CRAPPE MYRTLE - 3 GALLON 18" HIGH
 - 4. 36 LAGERTROMMIA INDECA CRAPPE MYRTLE - 3 GALLON 18" HIGH
 - 5. 36 LAGERTROMMIA INDECA CRAPPE MYRTLE - 3 GALLON 18" HIGH
 - 6. 36 LAGERTROMMIA INDECA CRAPPE MYRTLE - 3 GALLON 18" HIGH
 - 7. 36 LAGERTROMMIA INDECA CRAPPE MYRTLE - 3 GALLON 18" HIGH
 - 8. 36 LAGERTROMMIA INDECA CRAPPE MYRTLE - 3 GALLON 18" HIGH
 - 9. 36 LAGERTROMMIA INDECA CRAPPE MYRTLE - 3 GALLON 18" HIGH
 - 10. 36 LAGERTROMMIA INDECA CRAPPE MYRTLE - 3 GALLON 18" HIGH

BOYD INVESTMENTS LLC
 8477 DALLAS RD 798
 SUITE 507
 MONTGOMERY, AL 36117

LANDSCAPING PLAN
 SCALE 1" = 20'-0"

**TURNER & EAVE'S
 INSURANCE AGENCY INC.**
 MONTGOMERY, ALABAMA

**DANNY CLEMENTS
 BUILDER, INC.**

**STANSELL & ASSOCIATES
 ARCHITECTS
 MONTGOMERY, ALABAMA**



SHEET TITLE
 LANDSCAPING PLAN

DRAWN BY DMS
CHECKED DMS

PROJECT NUMBER 9801
FILE NUMBER L10

DATE AUGUST 12, 2009
REVISION AUGUST 14, 2009
PLOTTED AUGUST 12, 2009

SHEET NUMBER
 L1.0