

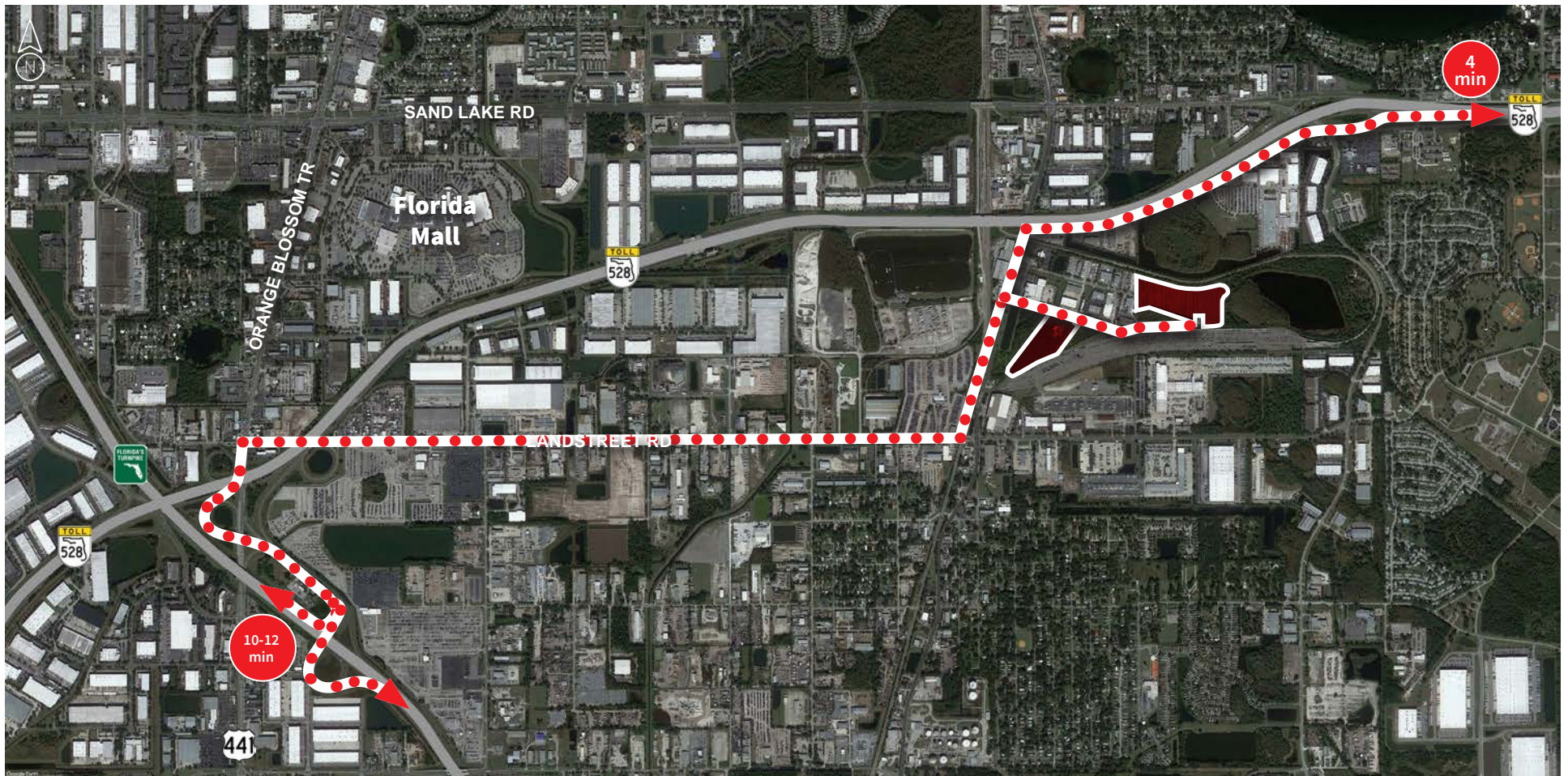


# ORANGE AVE & PINE AVE

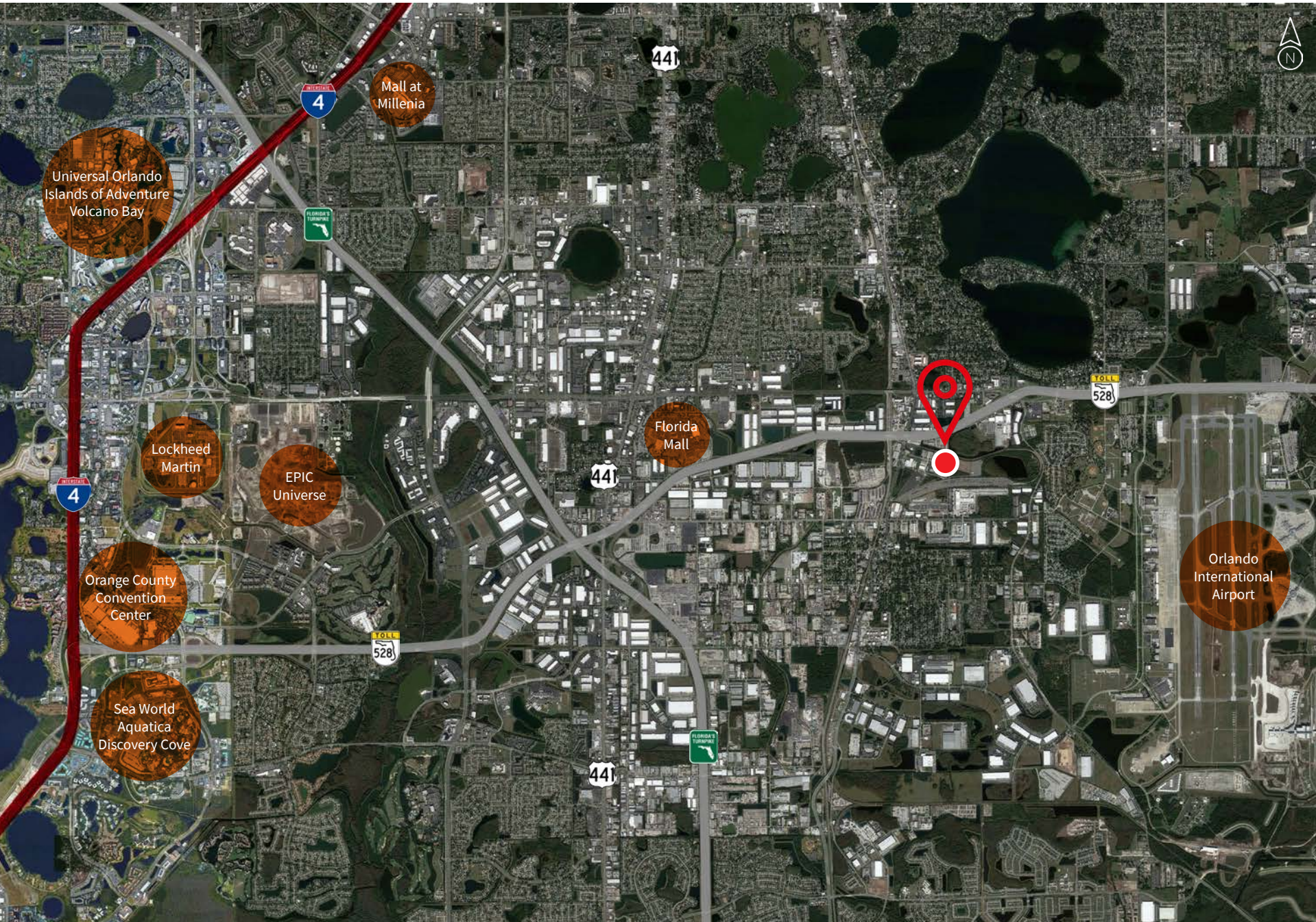
Orlando, FL 32824

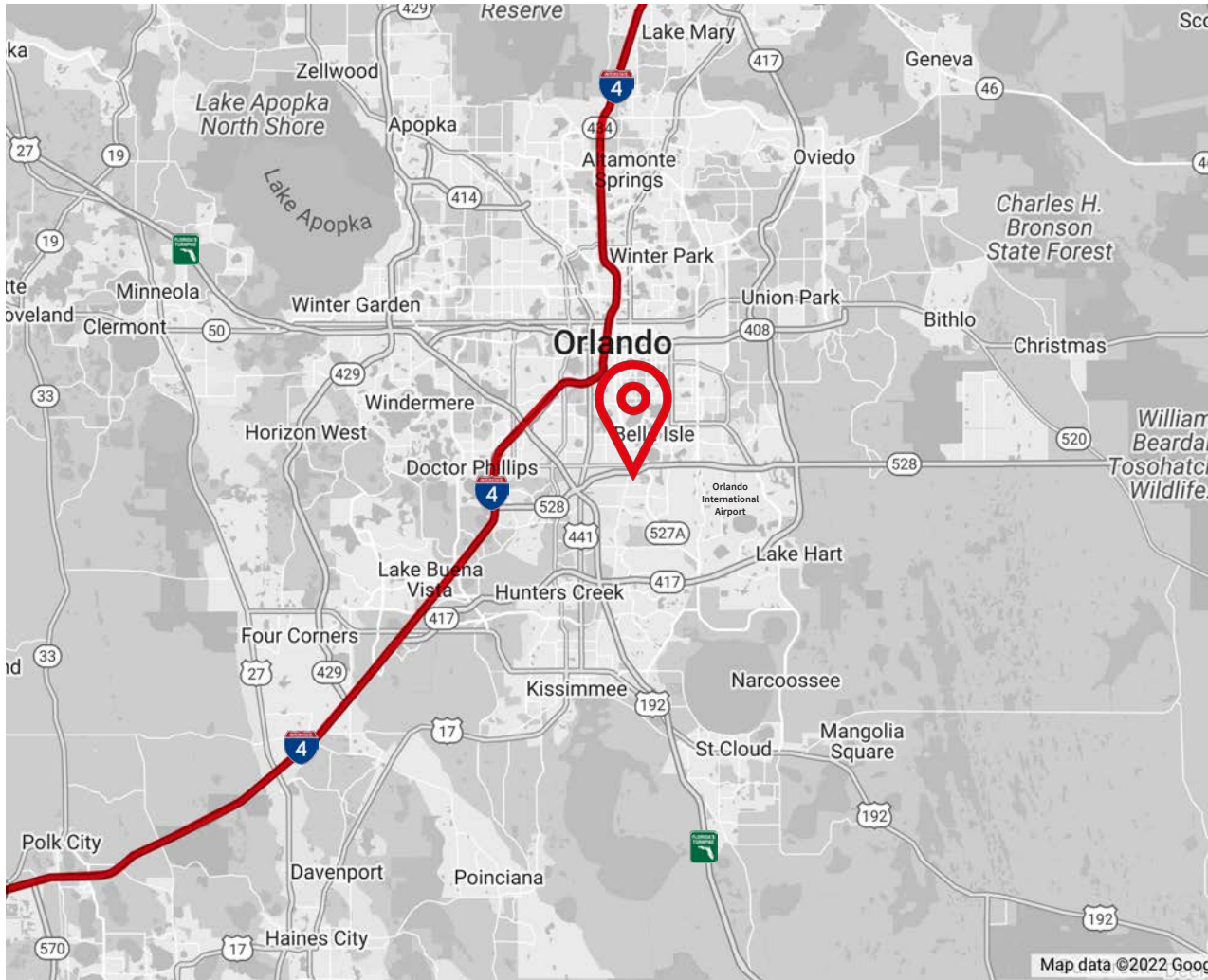
# Property specifications and access

Total available	22.92 acres (9.49 acres and 13.43 acres)
Site sizes	11.6 acres 15.9 acres
Zoning	I-2/I-3, Orange Co.
Property use	9100 - Private Utility
Features	<ul style="list-style-type: none"><li>• Fully fenced and paved</li><li>• Lighted</li><li>• Divisible to accomodate various tenant requirements</li></ul>
Lease rate	Please call for pricing



# Area highlights





## Location highlights

- Just west of the the Orlando International Airport
- Four minutes to SR 528 (Beachline Expwy) and ten minutes to Florida's Turnpike
- Nearby points of interest include Florida Mall, Universal Orlando, Sea World theme parks, Orange County Convention Center, the International Drive tourist corridor, Walt Disney World parks and resorts, Old Town, and Lake Nona, including Lake Nona Medical City
- 3.6 million people within a one hour drive

## Contact

Bobby Isola, SIOR, CCIM  
Executive Managing Director  
+1 407 930 1804  
bobby.isola@jll.com

Matt Sullivan, SIOR, CCIM  
Executive Managing Director  
+1 407 930 1802  
matt.sullivan@jll.com

Cameron Montgomery  
Senior Associate  
+1 407 982 8650  
cameron.montgomery@jll.com



Although information has been obtained from sources deemed reliable, JLL does not make any guarantees, warranties or representations, express or implied, as to the completeness or accuracy as to the information contained herein. Any projections, opinions, assumptions or estimates used are for example only. There may be differences between projected and actual results, and those differences may be material. JLL does not accept any liability for any loss or damage suffered by any party resulting from reliance on this information. If the recipient of this information has signed a confidentiality agreement with JLL regarding this matter, this information is subject to the terms of that agreement. ©2024. Jones Lang LaSalle Brokerage, Inc. All rights reserved.

Jones Lang LaSalle Brokerage, Inc., a licensed real estate broker across the US | 250 South Orange Avenue, Suite 700P, Orlando, FL 32801