



724 Pearl Street

Boulder, CO

West Pearl Office for Lease

Angela Topel

angela@gibbonswhite.com
(303) 586-5921

Michael-Ryan McCarty

mccarty@gibbonswhite.com
(303) 586-5939

Patrick Weeks

patrick@gibbonswhite.com
(303) 586-5935

www.gibbonswhite.com

[Property Info & Gallery](#)

[View Map](#)

Available Space	1,186 sq. ft.
Lease Rate / sq. ft.	\$20.00 NNN
Expenses / sq. ft.	\$15.60*

**Not Including Utilities*

- 1st Floor Personal Services Retail or Office with Spacious Reception Waiting Area, 3 Large Offices, 2 Small Offices, Pearl-Facing Main Entrance & Direct Entrance from the Parking Lot
- Located on Pearl Street Near Spruce Confections, Lolita's Market, Restaurants & Retail Shops of Pearl Street's Vibrant West End
- 5 Dedicated Parking Spaces Available with the Unit at \$75/mo Per Space
- Available March 1, 2026

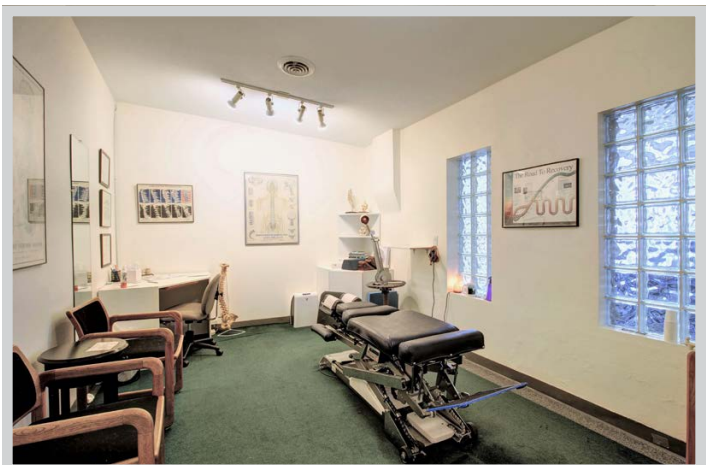
© 2025 Gibbons-White, Inc.



VIDEO



TOUR



© 2025 Gibbons-White, Inc.