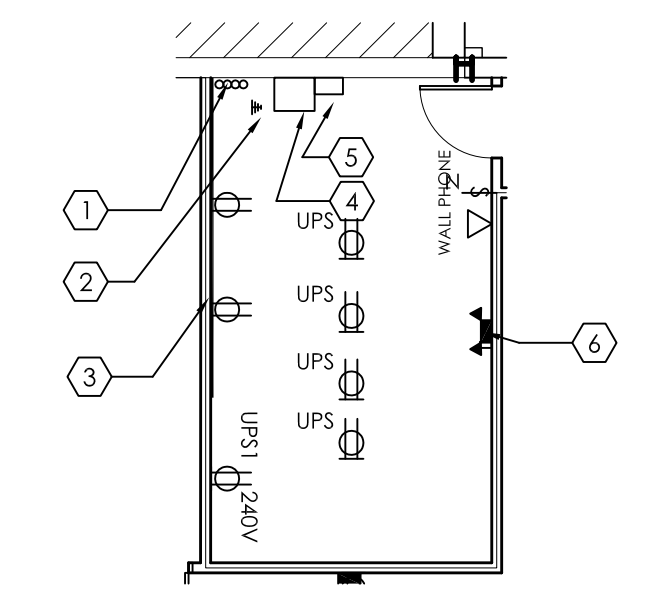


**1 ELECTRICAL PLAN**  
3/32" = 1'-0"



**2 IT ROOM DETAIL**  
1/8" = 1'-0"

**ELECTRICAL SHEET NOTES**

- ALL DATA CONDUIT IN FLOOR TRENCH TO BE HOMERUNS (NO DAISYCHAIN). DATA CABLES WILL TERMINATE IN MDF ROOM. TRENCH DIRECTION TO BE DETERMINED BY CONTRACTOR.
- UNO, ALL SYMBOLS DENOTE NEW.
- ALL SYMBOLS ARE SCHEMATICALLY SHOWN.

**ELECTRICAL SYMBOLS**

- DUPLEX RECEPTACLE
- J BOX WITH 110V CIRCUIT FOR MODULAR FURNITURE
- RECEPTACLE ON DEDICATED CIRCUIT
- QUADPLEX RECEPTACLE
- QUADPLEX RECEPTACLE ON DEDICATED CIRCUIT
- SINGLE GANG J BOX FOR 4 EA VOICE/DATA CABLES WITH 3/4" CONDUIT TO CEILING GRID FOR MUD RING & STRING UNLESS NOTED OTHERWISE.
- BLANK PLATED JUNCTION BOXES FOR TEL/DATA AND POWER
- ELECTRICAL PANEL
- AUDIO/ VISUAL ALARM
- AUDIO ALARM
- FIRE EXTINGUISHER
- PULL STATION
- THERMOSTAT
- FLOOR WITH COVER AND CUTOUTS FOR POWER & DATA CABLES TO BE ROUTED TO MODULAR FURNITURE. FLOORBOX TO BE FLUSH WITH CONCRETE FLOOR
- CARD READER
- DOOR OPENER

**ELECTRICAL KEY NOTES**

- 1/2" CONDUIT HOMERUN IN TRENCH FOR 8 DATA CABLES. STANDARD DUPLEX J BOX IN FLOOR BOX FOR DATA
- (1) EA 20 AMP DEDICATED CIRCUITS WITH QUAD 100 OUTLET IN FLOORBOX.
- 1/2" CONDUIT HOMERUN IN TRENCH FOR 12 DATA CABLES
- (2) EA 20 AMP DEDICATED CIRCUITS FOR MODULAR FURNITURE WIP
- 2" CONDUIT HOMERUN IN TRENCH FOR 16 DATA CABLES
- (2) EA 20 AMP DEDICATED CIRCUITS FOR MODULAR FURNITURE WIP
- 2 1/2" CONDUIT TO CEILING GRID OR MUD RING & STRING FOR 24 DATA CABLES
- (3) EA 20 AMP DEDICATED CIRCUITS FOR MODULAR FURNITURE WIP
- 3" CONDUIT HOMERUN IN TRENCH FOR 32 DATA CABLES
- (4) EA 20 AMP DEDICATED CIRCUITS FOR MODULAR FURNITURE WIP
- ELEC PROVISION REQUIRED FOR ANIXTER'S CARD READER
- OUTLETS TO BE POSITIONED ABOVE COUNTER SURFACE
- 54" AFF FOR WALL MOUNT PHONE
- ELECTRIC STRIKE TO OPEN DOOR 01

**IT ROOM GENERAL NOTES**

- QUAD POWER OUTLET LABELED UPS 5 THRU 10 WILL BE MOUNTED ON LADDER RACK. ALL OTHER OUTLETS (EXCEPT #1) WILL BE MOUNTED AT STANDARD HEIGHT.
- ALL OUTLETS IN MDF ROOM TO BE ROUTED THROUGH UPS.

**IT ROOM ELECTRICAL SYMBOLS**

- DUPLEX 110V RECEPTACLE
- DUPLEX 110V RECEPTACLE ON 20 AMP DEDICATED CIRCUIT
- QUADPLEX RECEPTACLE
- QUADPLEX 110V RECEPTACLE ON 20 AMP DEDICATED CIRCUIT
- SINGLE GANG J BOX FOR 4 EA VOICE/DATA CABLES WITH 3/4" CONDUIT TO CEILING GRID OR MUD RING & STRING UNLESS NOTED OTHERWISE

**IT ROOM ELECTRICAL KEY NOTES**

- 4 EA - 4" CONDUIT SLEEVES WITH BUSHINGS THROUGH CEILING
- GROUNDING BAR - SUPPLIED BY ANIXTER AND INSTALLED BY ELECTRICAL CONTRACTOR.
- 3-3/4"x4"x8" SHEETS OF WHITE MELAMIN OR FIRE RATED PLYWOOD PAINTED WHITE. MOUNTED FLUSH WITH CEILING GRID. COUNTERSUNK SCREWS.
- 44KVA UPS
- UPS BYPASS SWITCH
- EMERGENCY LIGHT

**ABBREVIATIONS**

- N NEW
- E EXISTING TO REMAIN
- R RELOCATED
- D TO BE DEMOLISHED
- GFI OUTLET ON GROUND FAULT INTERRUPTER
- AFF ABOVE FINISHED FLOOR

COPYRIGHT ©2009 Interwork Architects Incorporated  
This document is the property of Interwork Architects Incorporated and no part herein shall be used for any purpose without the written consent of Interwork Architects Incorporated.


1	ISSUED FOR PERMIT	04-15-09
No:	Description:	Date:

Project No: **0733.014.001**

Sheet Title:

**ELECTRICAL PLAN**

Sheet No:

N:\2007 Project Number\0733 A\Rev\0733.01.001 1601 Feehanville Ave. Prospect, IL 60070 Interwork Architects, Inc.