

# HUDSON PIERS

A HUDSON RIVER WATERFRONT DEVELOPMENT  
FEATURING **37,000 SF OF RETAIL**

**EXTELL**  **LEE &  
ASSOCIATES**









On behalf of EXTELL, Lee & Associates is proud to present **HUDSON PIERS** an 870,000 sf, 7-building, 1,400 unit residential development along the Hudson River waterfront.

This project is aimed for the sophisticated resident looking for a waterfront lifestyle, extensive amenities, best-in-class finishes, and close proximity to Manhattan.



*24-Hour Concierge*



*Fitness Centers  
with Spin Studios*



*Private Screening  
Rooms*



*Waterfront  
Lounges*



*Business Centers with  
Conference Rooms*



*Indoor Playrooms  
/ Game Rooms*



*Indoor Parking*



*Bicycle Storage*



*Landscaped Terraces  
with Fire Pits*



*Saltwater Swimming  
Pool accompanied  
by Cabanas and  
Grilling Stations*



*Bocce Court*



*Putting Green*



*1.5 mile long  
esplanade*



*direct shuttle  
service*



*public  
parkland*

37,000 sf of retail with TRUE double-height 20'+ ceilings, expansive storefronts, and over 1,000 parking spaces will ensure that Hudson Piers will become a top retail destination in Yonkers.





New 1,400-unit  
Development



20' Ceiling Heights  
in Retail Spaces



Great Parking  
Accessibility



Close Proximity to  
Metro North

30

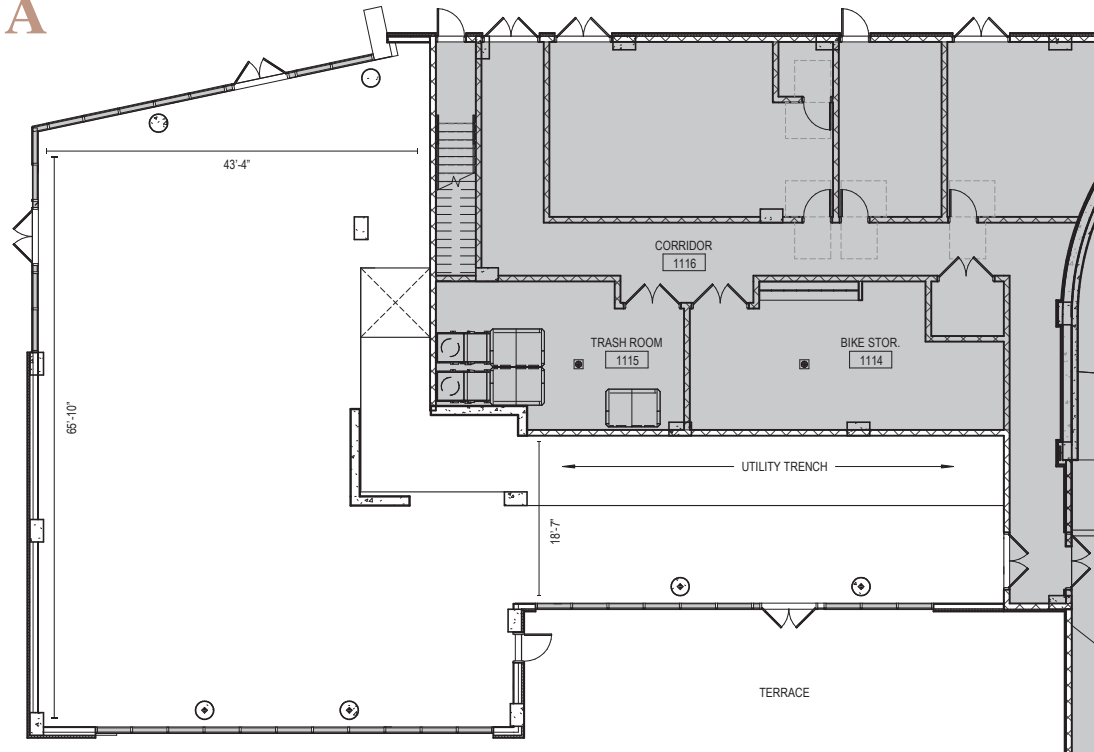
Acres Mixed Retail/  
Residential Development



Mid-Rise Luxury  
Waterfront

# Tower & Building A

## SPACE DETAILS

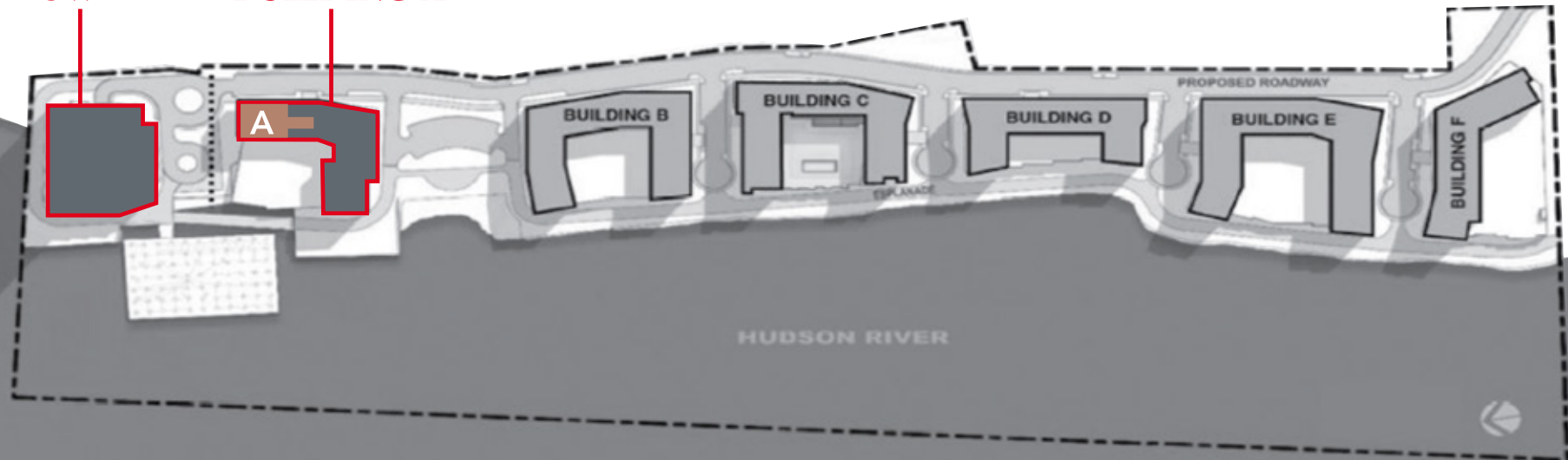


RETAIL A

**BETWEEN 4,000-10,000 SF OF WATERFRONT RETAIL AVAILABLE**

**TOWER**

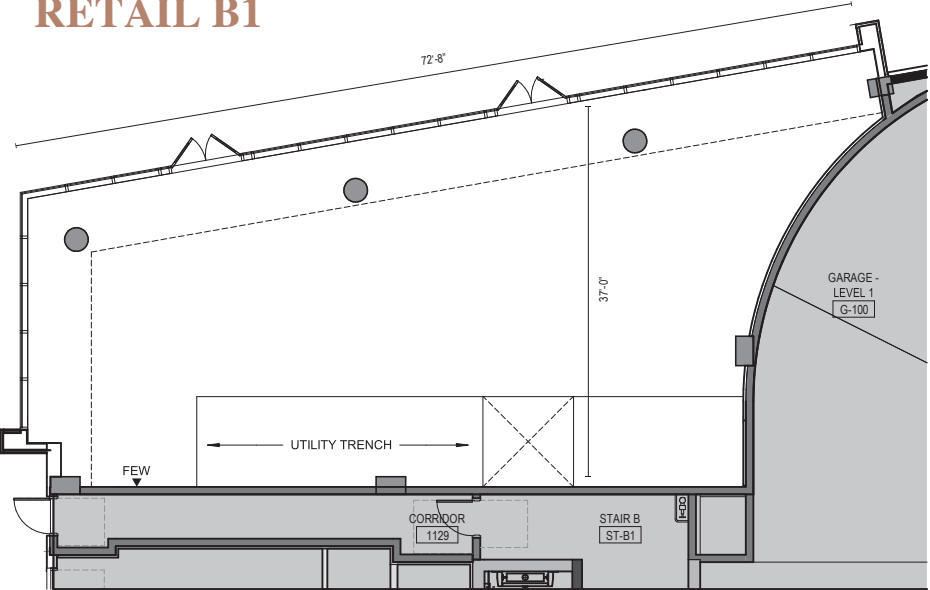
**BUILDING A**



# Building B

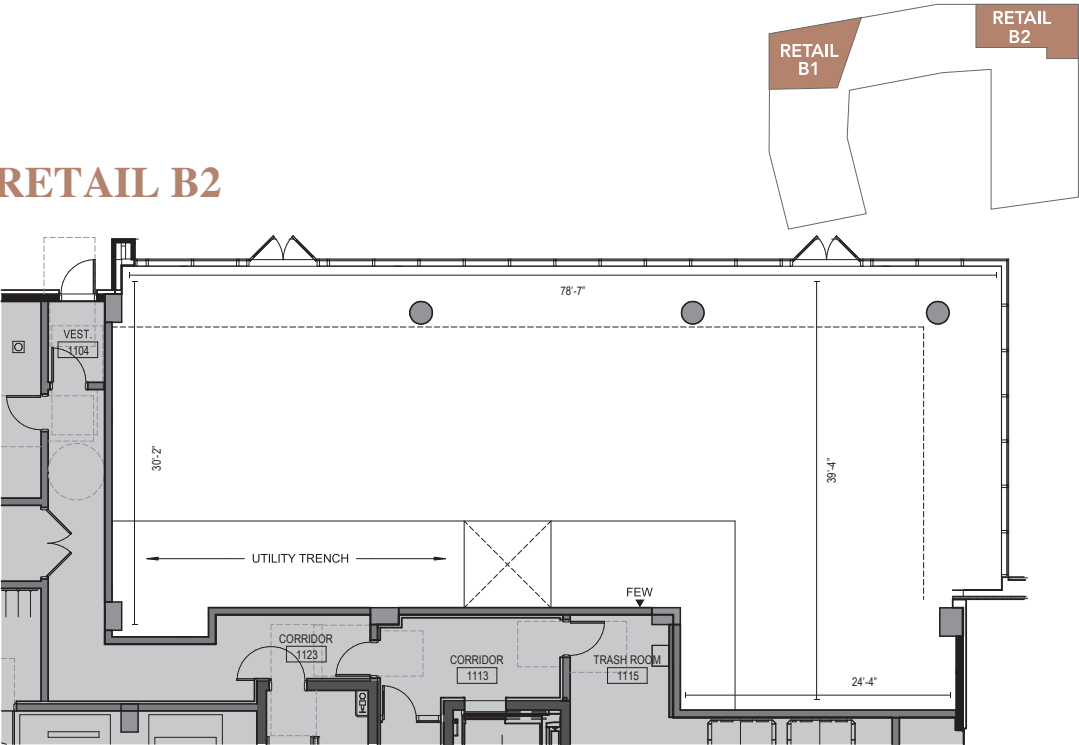
SPACE DETAILS

## RETAIL B1



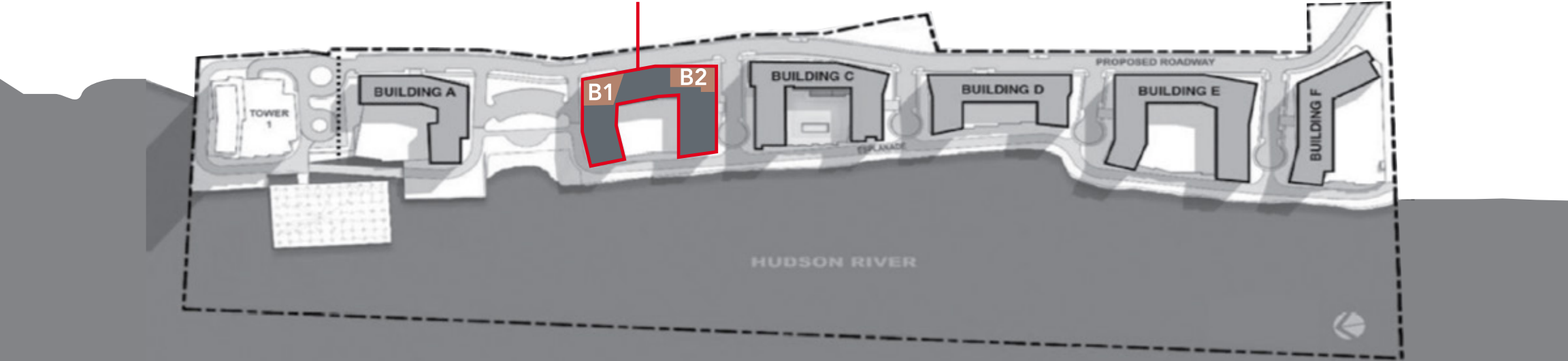
**1,968 SF**    **92 FEET**    **20 FEET**  
SIZE                      FRONTAGE                      CEILING HEIGHT

## RETAIL B2



**2,605 SF**    **106 FEET**    **20 FEET**  
SIZE                      FRONTAGE                      CEILING HEIGHT

## BUILDING B

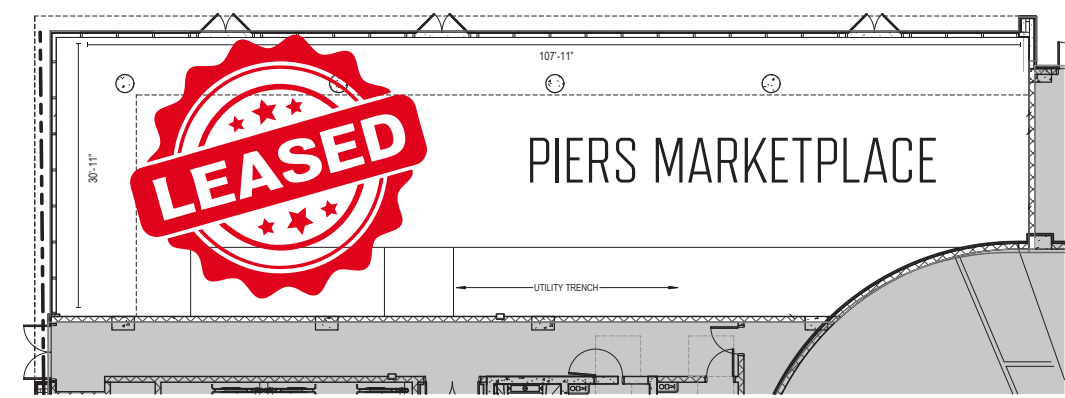




# Building C

SPACE DETAILS

## RETAIL C1

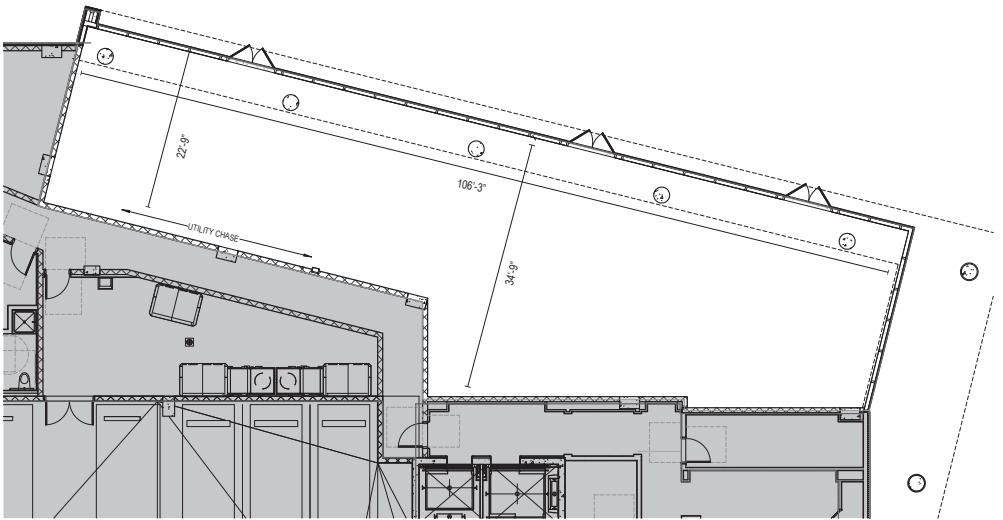


**3,395 SF**  
SIZE

**137 FEET**  
FRONTAGE

**20 FEET**  
CEILING HEIGHT

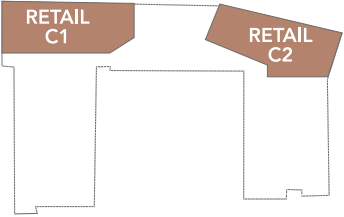
## RETAIL C2



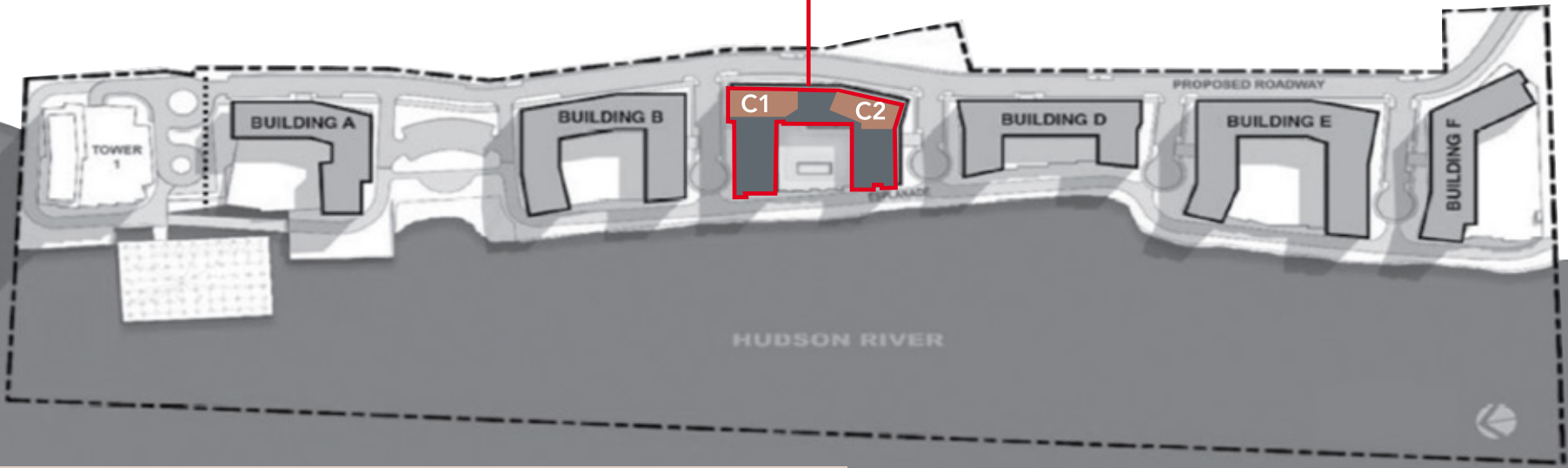
**2,924 SF**  
SIZE

**128 FEET**  
FRONTAGE

**20 FEET**  
CEILING HEIGHT

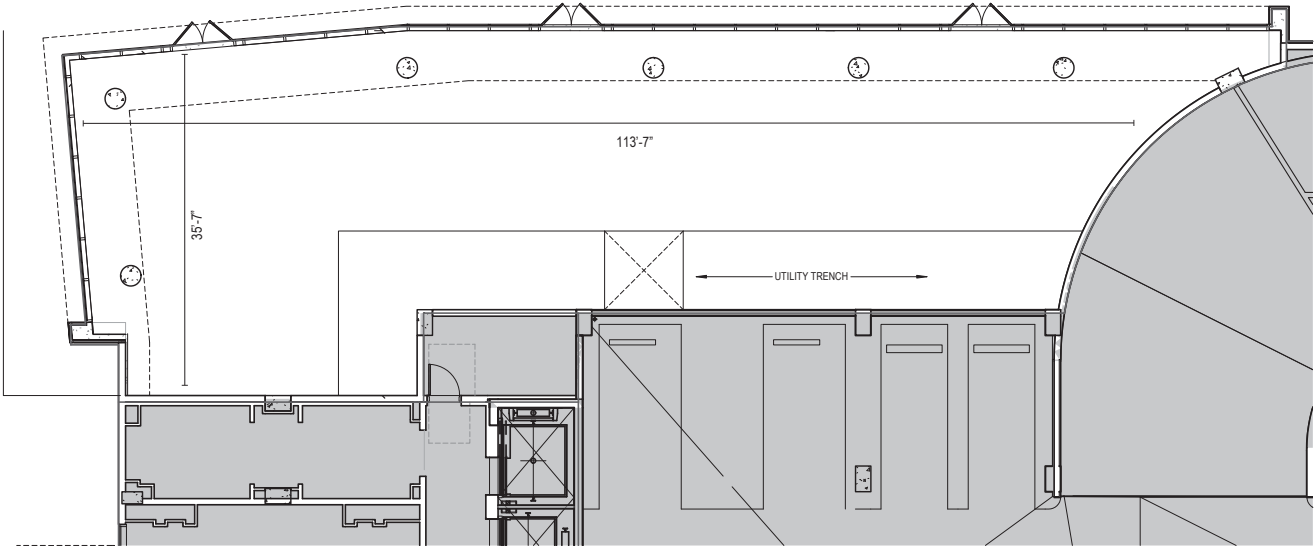
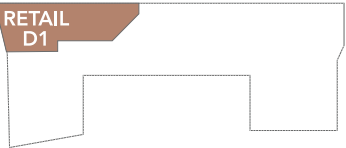


## BUILDING C



# Building D

SPACE DETAILS



3,169 SF

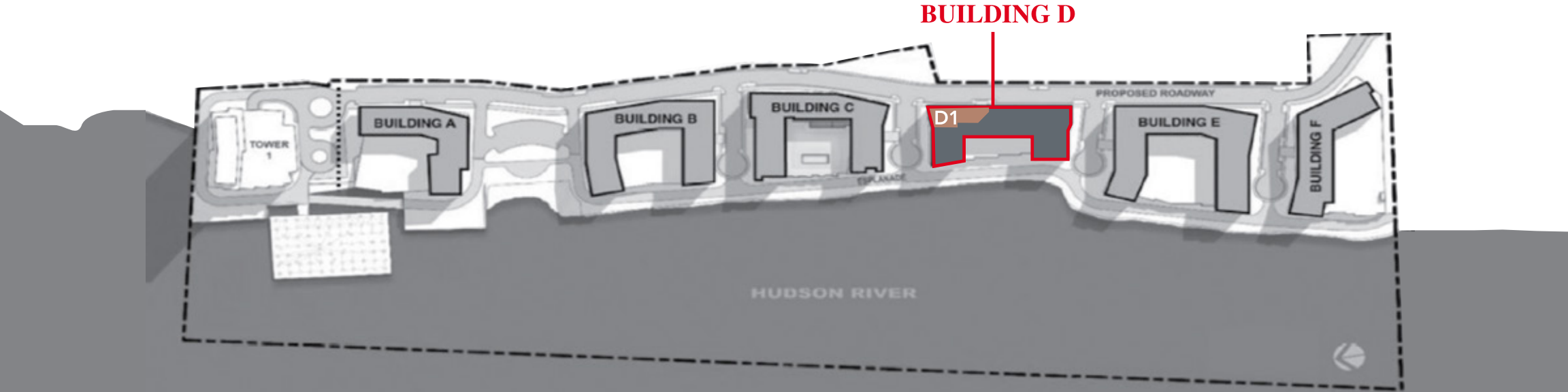
SIZE

153 FEET

FRONTAGE

20 FEET

CEILING HEIGHT

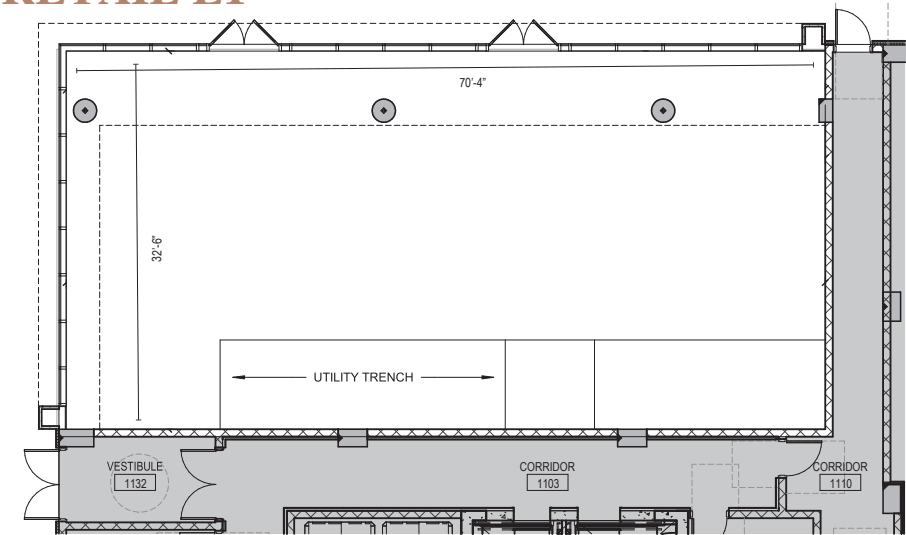




# Building E

SPACE DETAILS

## RETAIL E1

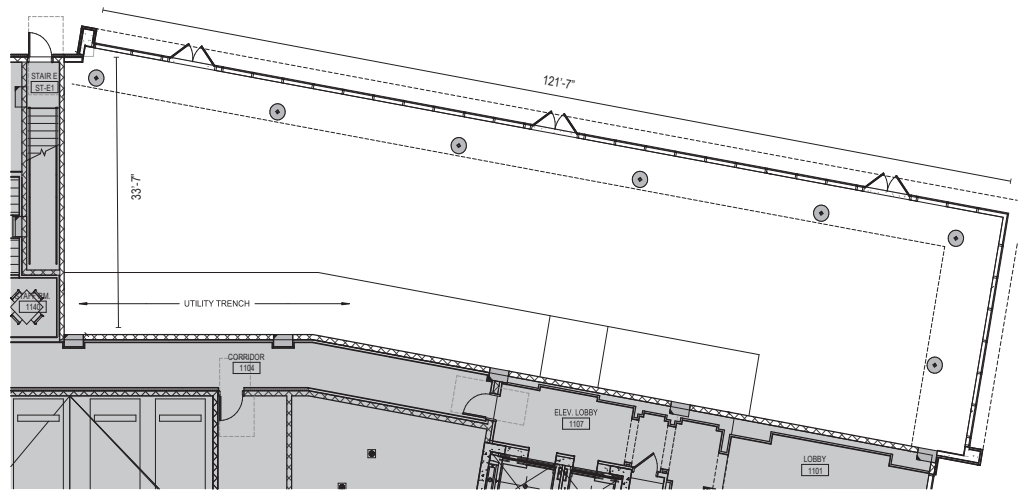


**2,137 SF**  
SIZE

**97 FEET**  
FRONTAGE

**20 FEET**  
CEILING HEIGHT

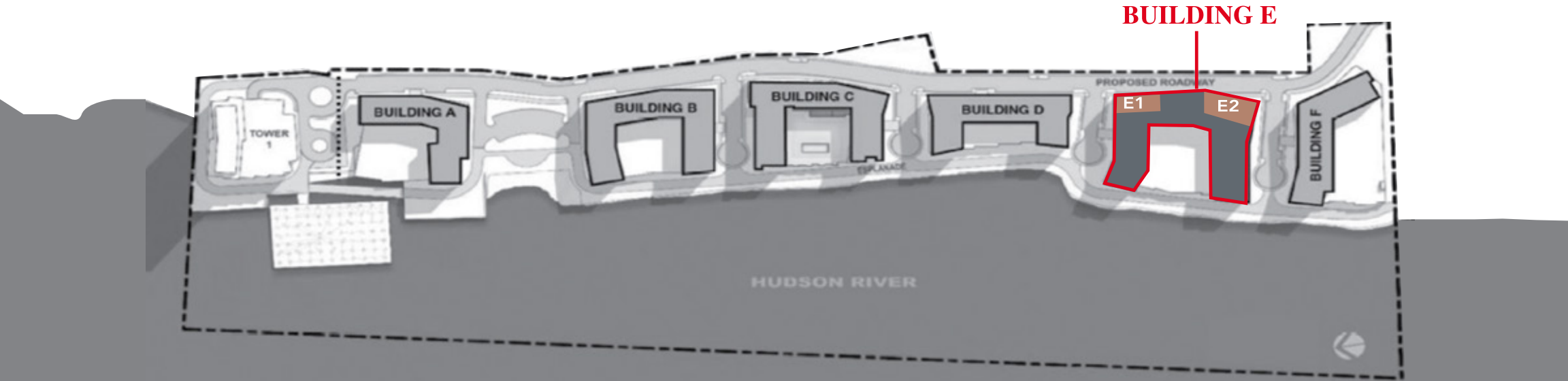
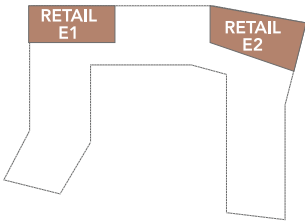
## RETAIL E2



**3,782 SF**  
SIZE

**150 FEET**  
FRONTAGE

**20 FEET**  
CEILING HEIGHT



# Building F

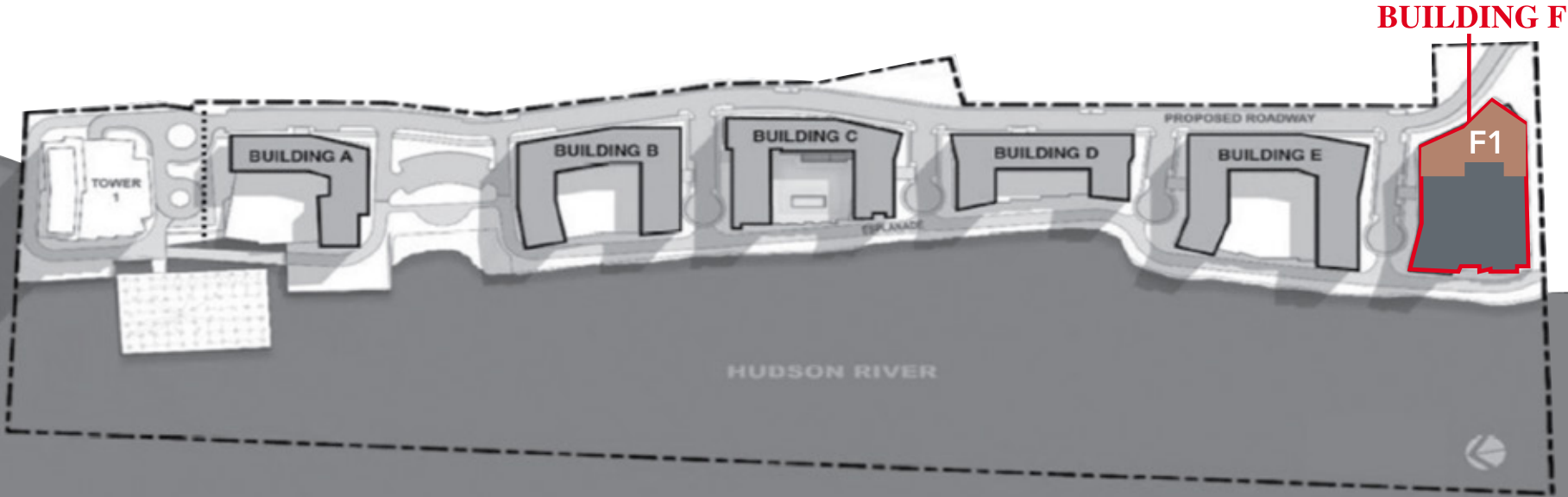
SPACE DETAILS



10,101 SF  
SIZE

198 FEET  
FRONTAGE

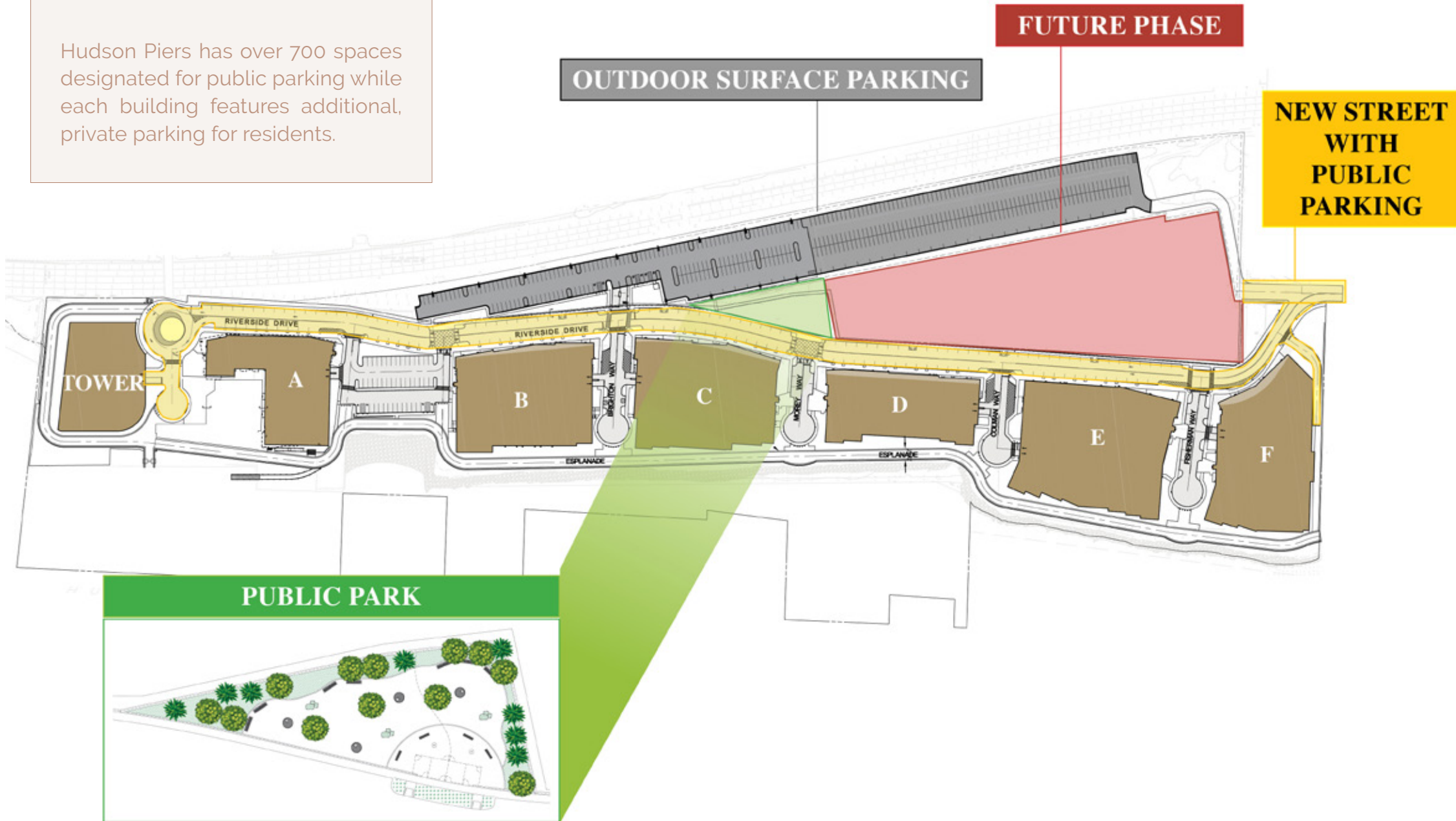
20 FEET  
CEILING HEIGHT





# Parking Site Plan

Hudson Piers has over 700 spaces designated for public parking while each building features additional, private parking for residents.



# Interior Design of Hudson Piers



Bedroom



Kitchen and Dining



Home Office



Studio Apartment



# Development in the Area

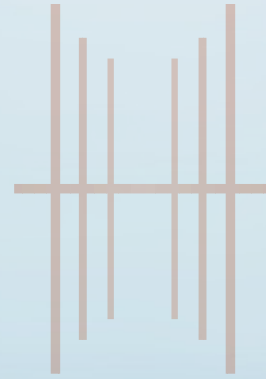




# Tenants in the Market







# HUDSON PIERS

A HUDSON RIVER WATERFRONT DEVELOPMENT  
FEATURING **37,000 SF OF RETAIL**

**Jeffrey Lopez**

646.284.4047

[jlopez@lee-associates.com](mailto:jlopez@lee-associates.com)

**Steve Lorenzo**

845.629.1640

[slorenzo@lee-associates.com](mailto:slorenzo@lee-associates.com)

**EXTELL**

**LEE &  
ASSOCIATES**

All information supplied is from sources deemed reliable and is furnished subject to errors, omissions, modifications, removal of the listing for sale or lease, and to any listing conditions, including the rates and manner of payment of commissions for particular offerings imposed by principals or agreed by this Company, the terms of which are available to principals or duly licensed brokers. Any square footage dimensions set forth are approximate.