

**AVISON
YOUNG**

FOR LEASE

272 W Coleman Boulevard, Mount Pleasant, SC 29464



For more information, please contact:

Jeremy Willits

Office & Investment Services

C 843.270.9205

jeremy.willits@avisonyoung.com

Gerry Schauer, CCIM

Office & Investment Services

C 843.364.2055

gerry.schauer@avisonyoung.com

272 W Coleman Blvd.

Available now, this building offers a thoughtfully designed and efficient floor plan. Suite 200 was recently updated with new carpet and paint. Lots of windows make the suite bright and inviting. The property offers unparalleled access to the Ravenel Bridge with quick access to all major points in the Charleston area. Parking at the door. Street-front sign space available. Lease rate is net of only electricity and janitorial!

The Town of Mount Pleasant is a rapidly growing, affluent, coastal community within the Charleston-SC Metropolitan Statistical Area. This dynamic suburb of Charleston has proven to be an outstanding location for business, offering a highly desirable lifestyle to attract and retain key employees.

Snapshot

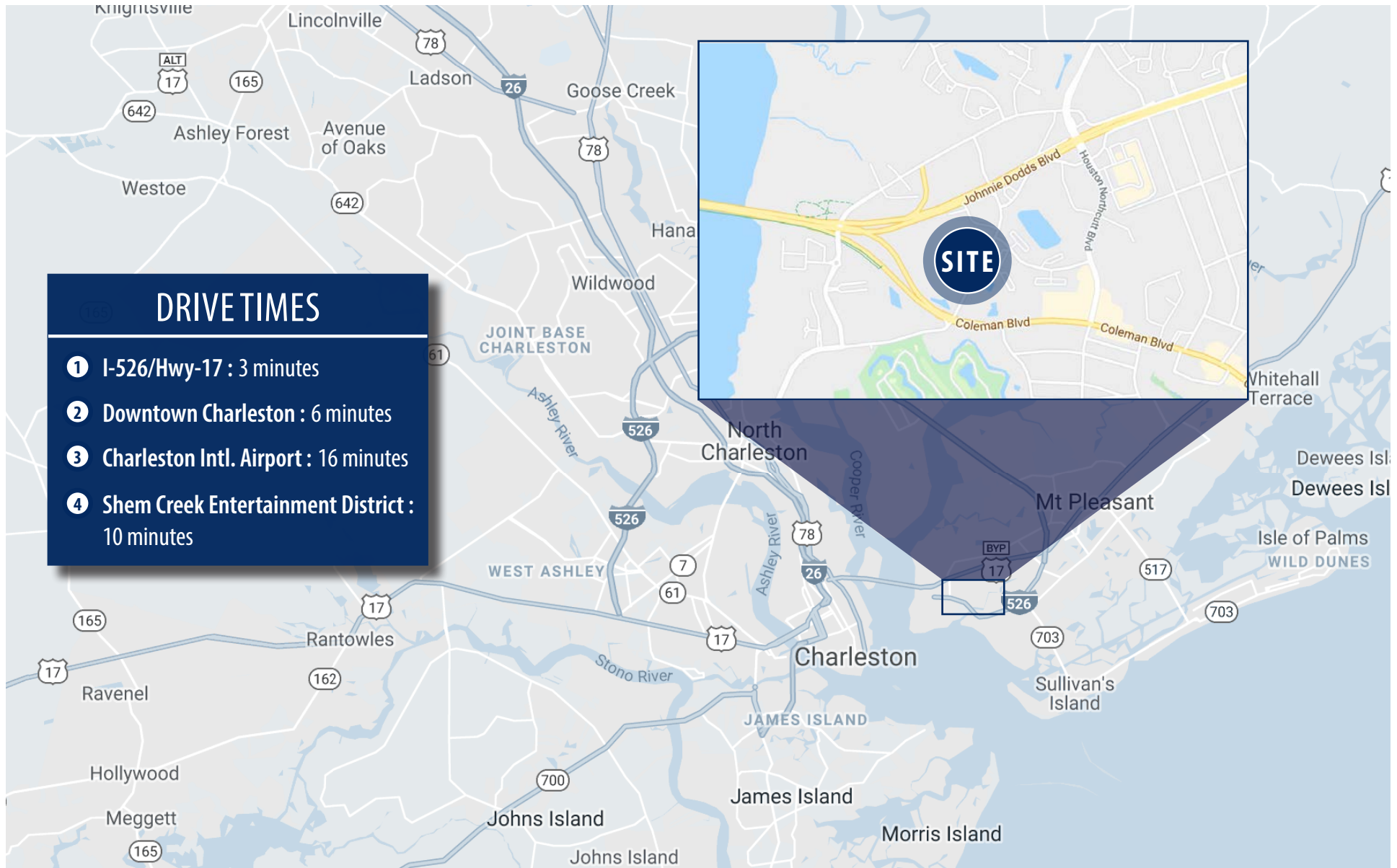
Tax Map	517-00-00-025
Year Built	1988
Total Building Size	4,200
Zoning	General Office
County	Charleston
Municipality	Mount Pleasant
Parking	Parking On-Site



Leasing Information

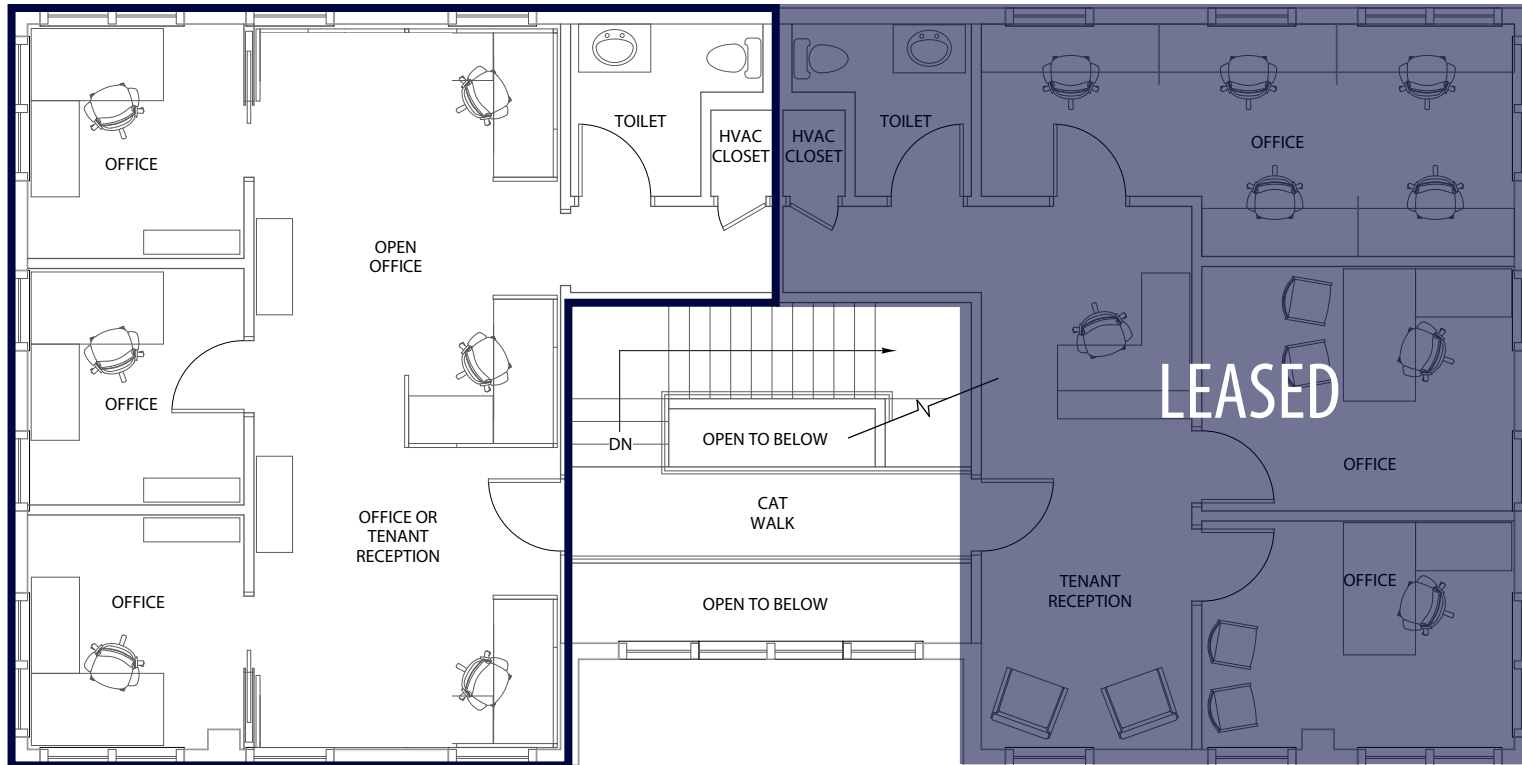
Unit	Size	Lease Rate	Lease Type
200	1,050 sf	\$2,625/month	NET of electric and janitorial

Coming from Downtown Charleston, take the Ravenel Bridge into Mount Pleasant and keep right for Coleman Blvd.
272 West Coleman Blvd. is less than half a mile from the foot of the bridge, on the left.



Floor Plan

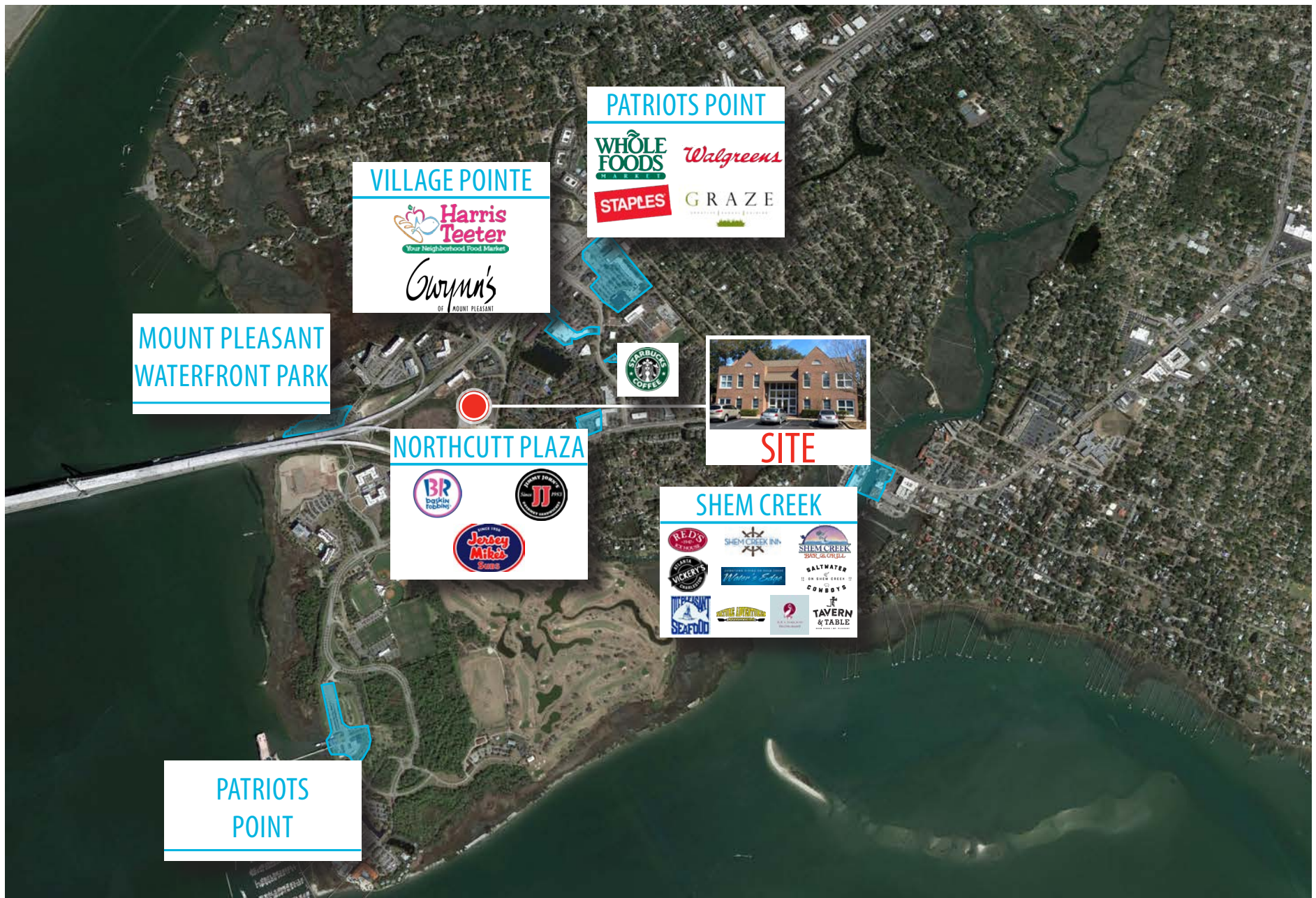
Suite 200 | 1,050 sf





INTERIOR PHOTOS

Amenities Map



South Carolina Brokerage Team

Our South Carolina brokers deliver integrated real estate services to occupiers and investors. Through a dedicated principal-led business resources team, we provide solutions via tools, technology and expertise to support our clients however complex their challenges. Our approach is holistic and consistent. It starts with the Avison Young team's understanding of your business priorities, not with real estate transactions. For our clients, this means we produce customized, cost-effective solutions with speed, creativity and confidence.

Listing Broker



Jeremy Willits
Senior Vice President
Office & Investment Services
O 843.725.7200
D 843.973.8347
C 843.270.9205
jeremy.willits@avisonyoung.com



Gerry Schauer, CCIM
Vice President
Office & Investment Services
O 843.725.7200
D 843.973.8351
C 843.364.2055
gerry.schauer@avisonyoung.com

Support Team



Bree Paxton
Marketing Coordinator
bree.paxton@avisonyoung.com



Tate Walkush
Marketing Manager
tate.walkush@avisonyoung.com

Title

Thank you.

**AVISON
YOUNG**

avisonyoung.com

1315 Ashley River Road
Charleston, South Carolina 29407
O 843.725.7200
F 843.725.7201
Avison Young - South Carolina, Inc.



Platinum
member