

**150 Mirona Rd**  
Portsmouth, NH

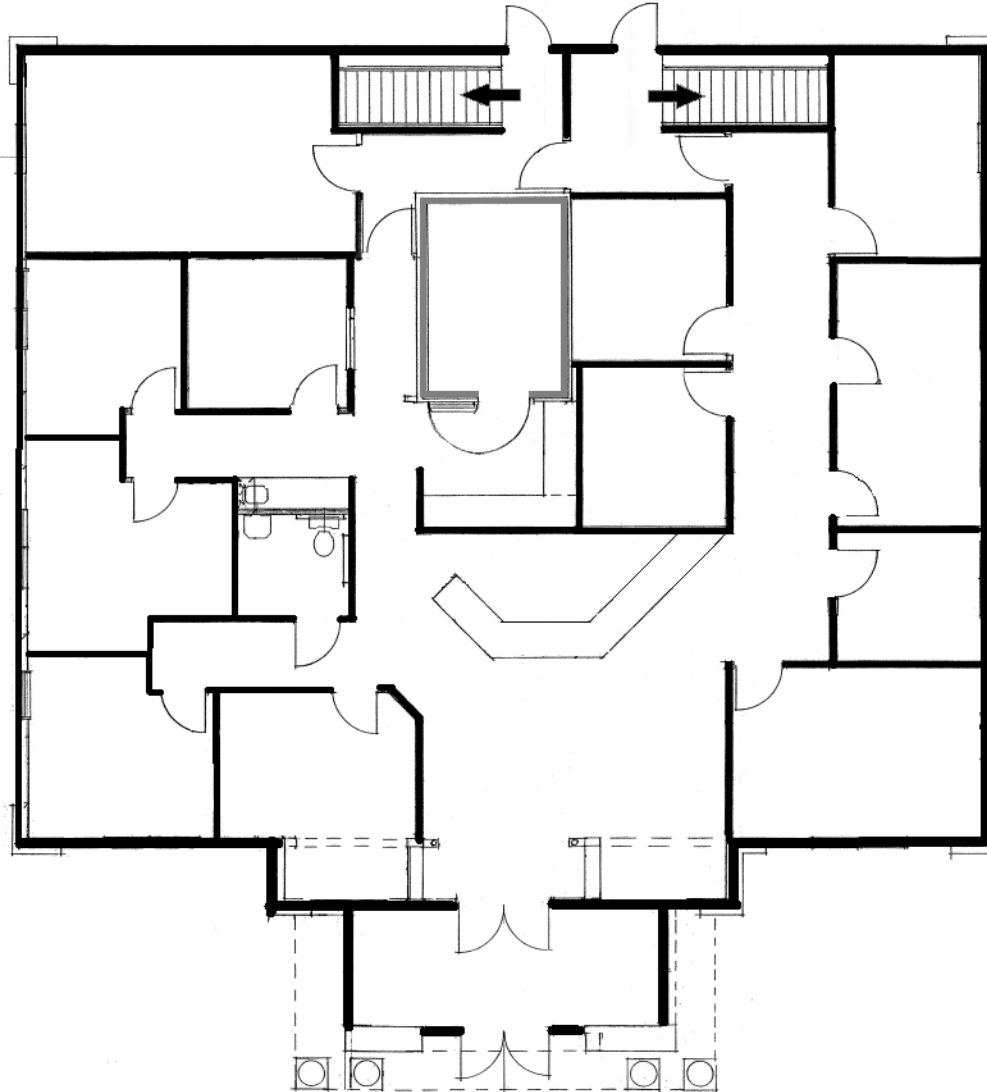
**LEASE RATE:**  
**First Floor: 3,100± SF; \$21 PSF Modified Gross**  
**Lower Level: 3,100± SF; \$16 PSF Modified Gross**

# Floor Plan: First Floor

FLOOR PLAN IS NOT TO SCALE .  
IT IS A REPRESENTATION OF THE SPACE.

## Property Features

- 3,100 +/- SF Retail/Office Space on First Floor
- Handicap accessible
- Public Water and Sewer
- Ample on-site parking, unassigned and unreserved
- 1/2 mile from Route 1, and 2 miles from I-95



FRONT ENTRANCE

**NAI** Norwood Group

**Andy Fleisher, CCIM**

+1 603 498 2817

[andy@nainorwoodgroup.com](mailto:andy@nainorwoodgroup.com)

**Katie Fleisher**

+1 603 205 7399

[kfleisher@nainorwoodgroup.com](mailto:kfleisher@nainorwoodgroup.com)

28 Deer Street Suite 301  
Portsmouth NH 03801  
+1 603 431 3001  
[nainorwoodgroup.com](http://nainorwoodgroup.com)

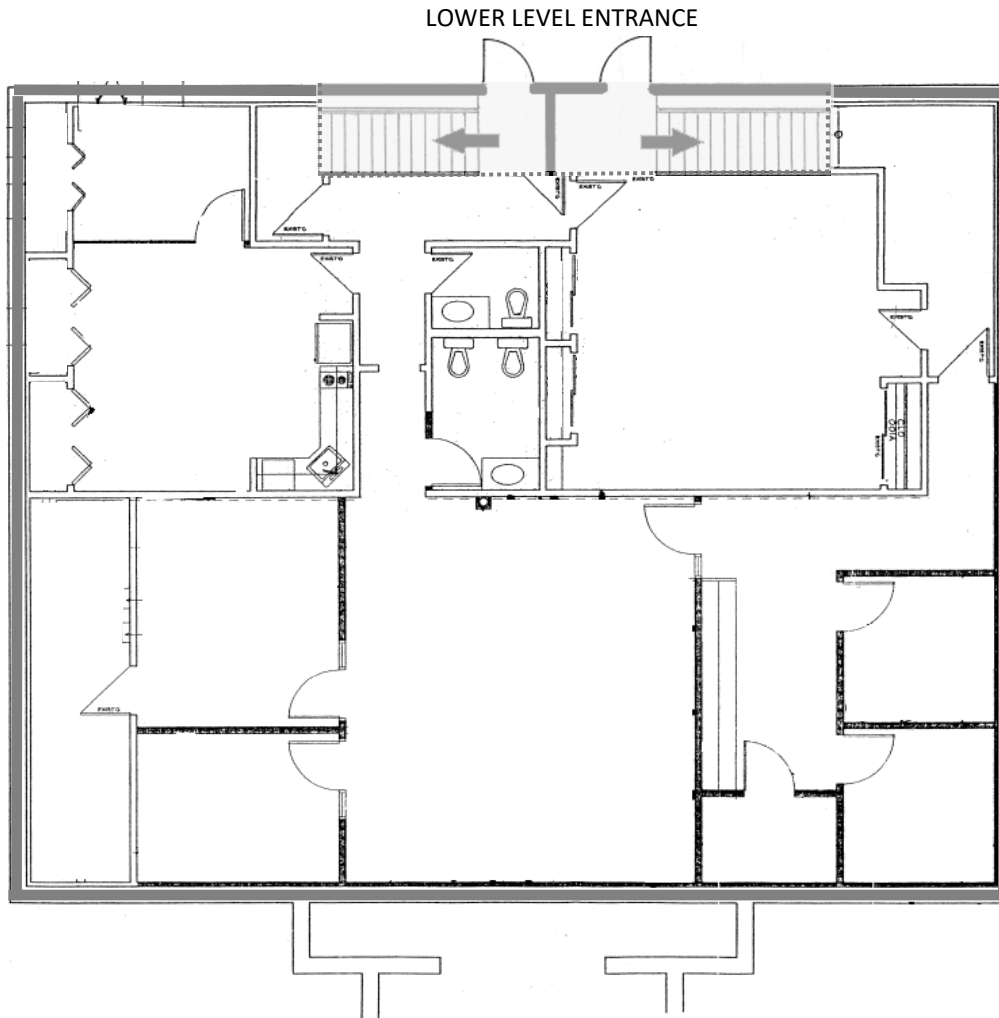
**150 Mirona Rd**  
Portsmouth, NH

**LEASE RATE:**

**First Floor: 3,100± SF; \$21 PSF Modified Gross**  
**Lower Level: 3,100± SF; \$16 PSF Modified Gross**

# Floor Plan: Lower Level

FLOOR PLAN IS NOT TO SCALE .  
IT IS A REPRESENTATION OF THE SPACE.



## Property Features

- 2 Retail/Office spaces available: 3,100± sf on First Floor, 3,100± on Lower Level
- Public Water and Sewer
- Ample on-site parking, unassigned and unreserved
- 1/2 mile from Route 1, and 2 miles from I-95

**Andy Fleisher, CCIM**

+1 603 498 2817

[andy@nainorwoodgroup.com](mailto:andy@nainorwoodgroup.com)

**Katie Fleisher**

+1 603 205 7399

[kfleisher@nainorwoodgroup.com](mailto:kfleisher@nainorwoodgroup.com)