



# UNIVERSITY CORPORATE CENTER

981 CORPORATE CENTER DR  
POMONA, CA 91768

**NEWMARK**

Please contact:

TAYLOR ING  
SENIOR MANAGING DIRECTOR  
T. 714.271.9066  
TAYLOR.ING@NMRK.COM  
CA RE LIC. #00895164

RICHARD SUNG  
MANAGING DIRECTOR  
T. 949.608.2178  
RICHARD.SUNG@NMRK.COM  
CA RE LIC. #01953211



# Available For Lease

981 CORPORATE CENTER  
POMONA, CA 91768

## PROPERTY FEATURES:

- Excellent access to 10, 57, 71 and 60 Fwys
- Part of the Prestigious University Corporate Center
- Close proximity to Cal Poly Pomona
- Flexible Suite Configurations
- Professionally managed

## BUILDING SUMMARY

Building size:     ±33,250 SF  
Availability:       2,012 SF  
Lease Rate:        \$2.15 FSG  
Parking Ratio:     4:1000



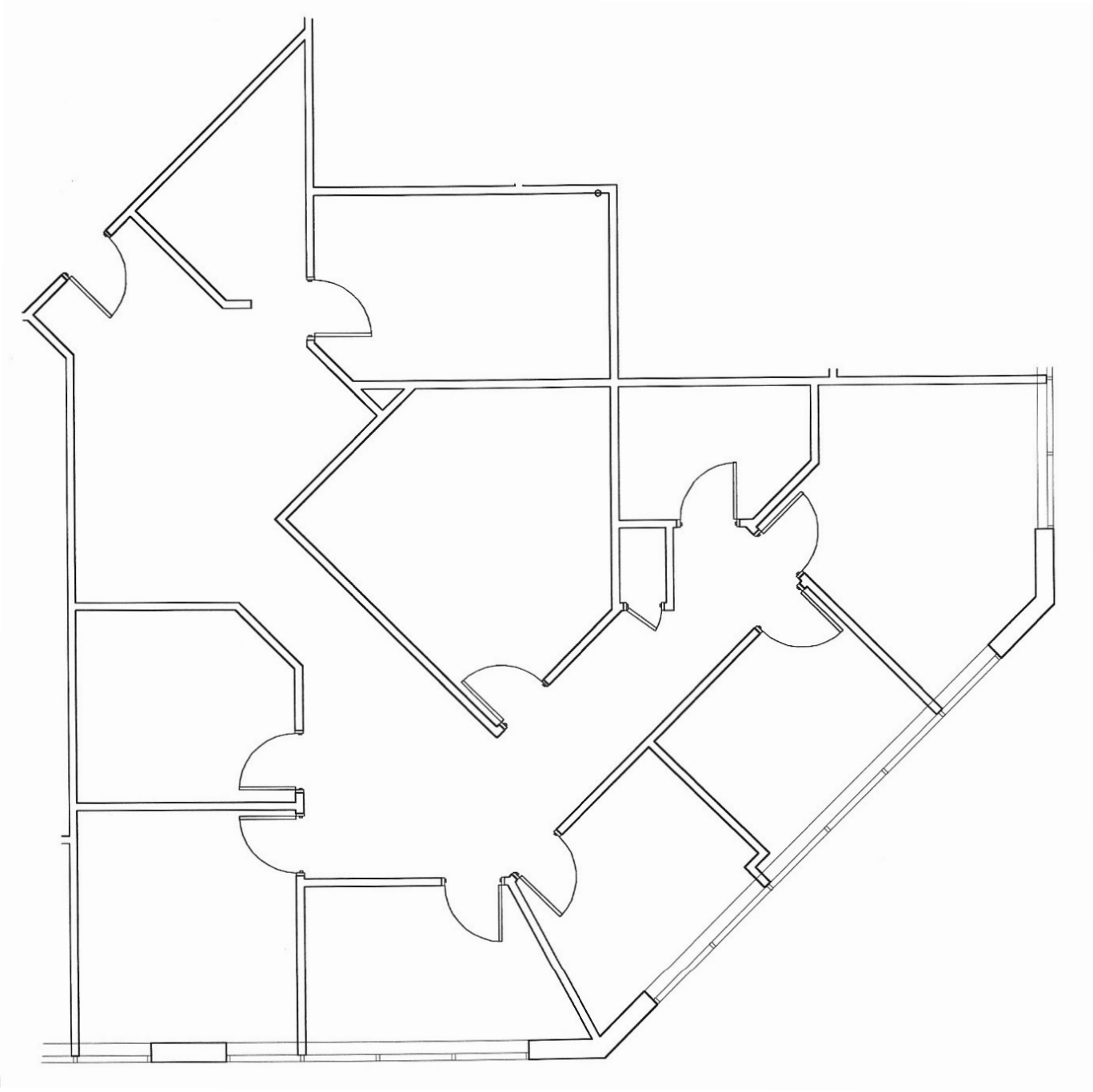
# Available For Lease

981 CORPORATE CENTER  
POMONA, CA 91768

*Floor Plan*

*Suite 140 | ±2,012 SF*

*Available: October 1, 2024*

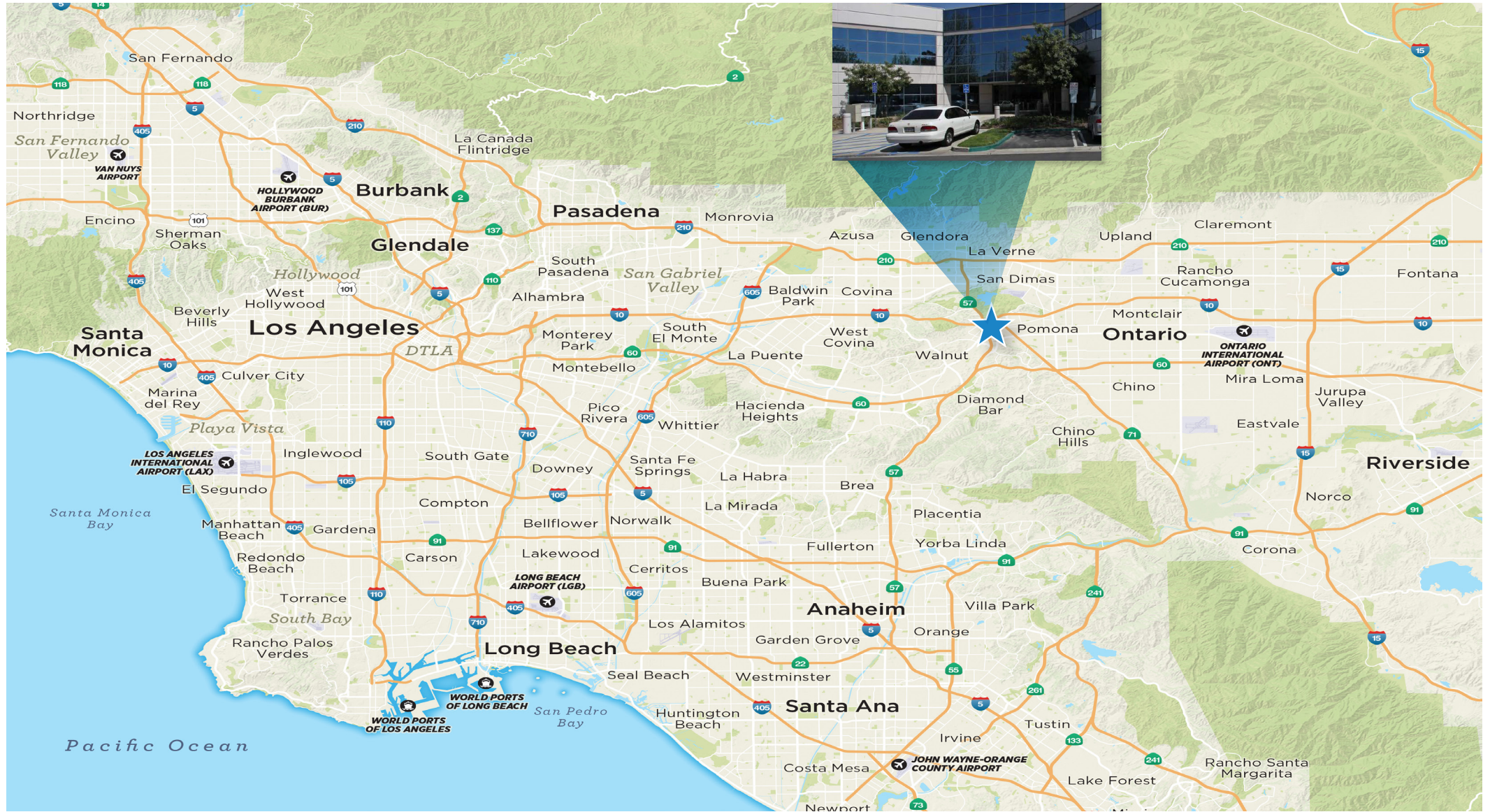




# Available For Lease

981 CORPORATE CENTER  
POMONA, CA 91768

## Regional Location







Please contact:

TAYLOR ING  
SENIOR MANAGING DIRECTOR  
T. 714.271.9066  
TAYLOR.ING@NMRK.COM  
CA RE LIC. #00895164

RICHARD SUNG  
MANAGING DIRECTOR  
T. 949.608.2178  
RICHARD.SUNG@NMRK.COM  
CA RE LIC. #01953211

**NEWMARK**