

FOR LEASE

6821

OFFICE/MEDICAL

6811

6831

6801

PALISADES PARK

6801 - 6831 Palisades Park Court

Fort Myers, FL 33912

AVAILABILITY

Bldg / STE	Size	Base Rent	CAM	Monthly Total
6801-1	2,754±	\$17.00	\$8.50	\$5,852
6811	FULLY LEASED			
6821	10,860±	\$25.00	\$8.50	\$30,318
6831-2	1,800±	\$20.00	\$8.50	\$4,275

PROPERTY OVERVIEW

- Spaces are built-out and ready for occupancy
- Ample parking in excess of medical code
- Building signage available
- Located ½ mile south of the Daniels Pkwy and Six Mile Cypress Pkwy intersection with entry off of Six Mile Cypress and Plantation Rd
- 1-mile to Lee Health's Gulf Coast Medical Center



Matthew W. Stepan, CCIM
Commercial Advisor
Matt@pc-cre.com

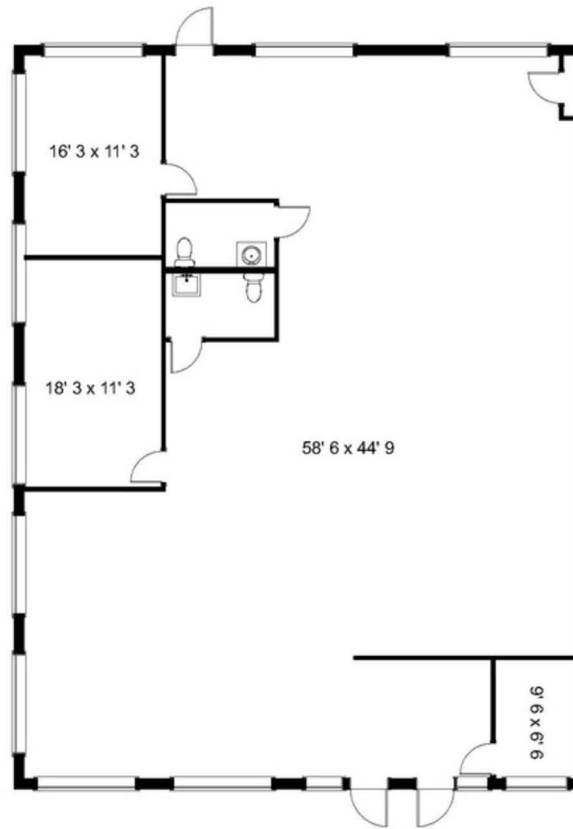


W.T. Pearson
Broker Associate
WT@pc-cre.com



PREMIER
COMMERCIAL

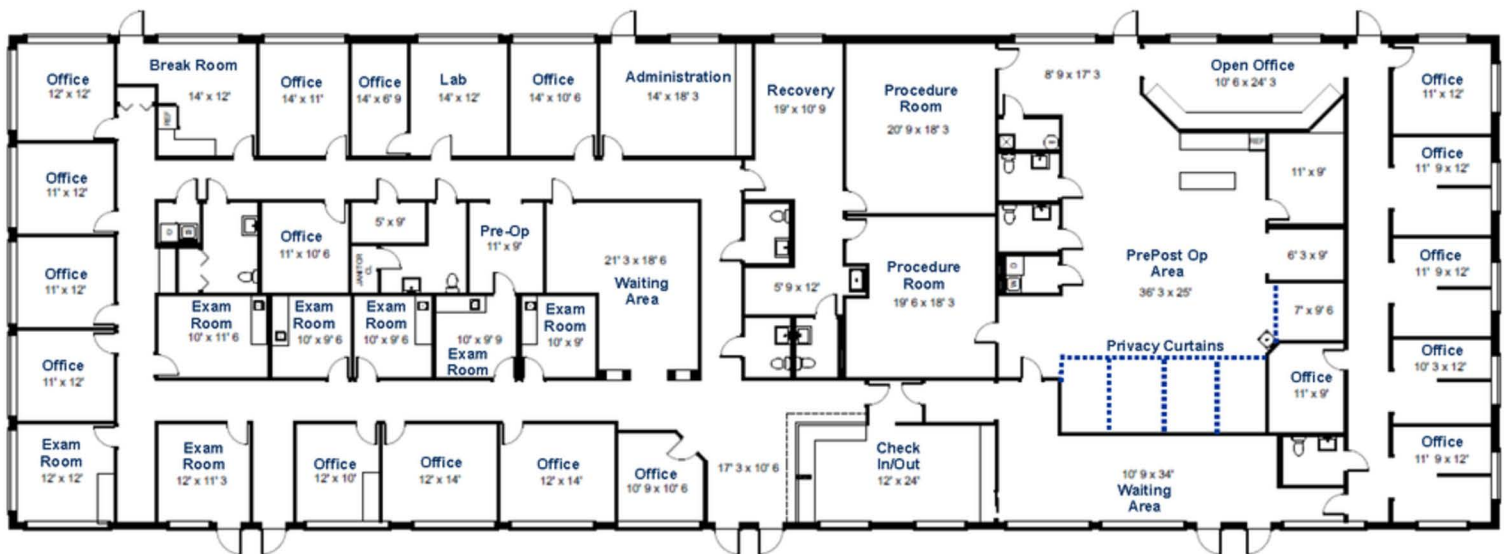
FLOORPLAN - 6801 Palisades Park Court, STE 1



6801 - STE 1:

- 2,754± SF
- \$17.00 PSF+ NNN
- Available now

FLOORPLAN - 6821 Palisades Park Court



6821 Palisades Park Court:

- 10,860± SF
- \$25.00 PSF+ NNN
- Fully built-out, free standing medical office space
- Available now



