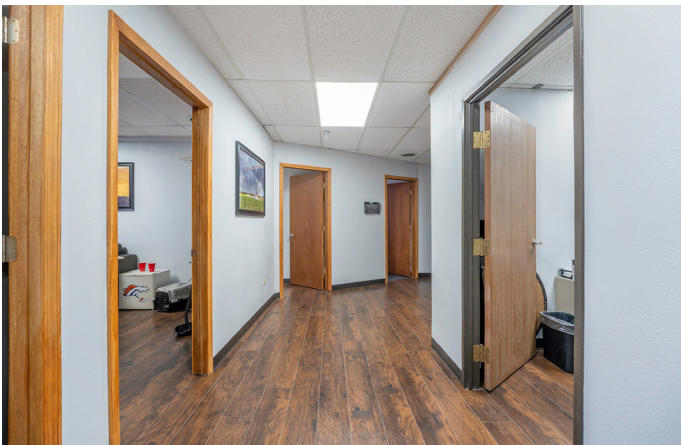




# 5005 W 81st Pl, Westminster, CO 80031 ARTS BUILDING FOR LEASE



## PROPERTY INFO

Year Built:	1984
Building Size:	15,360 SF
Building Class:	B
Typical Floor Size:	4,800 SF
Land Acres:	0.69 AC
Parking:	54 Spaces



This Class B multi-tenant office building was built in 1984 and has 19 individual suites ranging from 220 SF - 2400 SF. This property type has proven market resilience, due to the smaller office type setup that is now in demand, as opposed to the larger office space. The Property sits on a 30,056 SF lot that boasts 54 surface parking spaces. Situated on the growing Denver-Boulder corridor, Westminster is easily accessed from either metropolitan area. The Property is conveniently located between Sheridan Boulevard & Highway 36 with restaurants and shopping within walking distance, and a few minutes drive to the new Downtown Westminster redevelopment.

- New surface parking light
- ADA accessible elevators
- Updated Restrooms, Hallways and Lobby Area
- New ADA ramps
- Fully Fire Sprinkled



## Contact



**JASON RUSCIO**  
Principal Broker  
jruscio@avantrep.com  
720.364.2073