

FITNESS / MEDICAL / OFFICE SPACE

2 WEST 86TH STREET

South West corner of West 86th Street and Central Park West

MANHATTAN

UPPER WEST SIDE | NY

5,000 SF

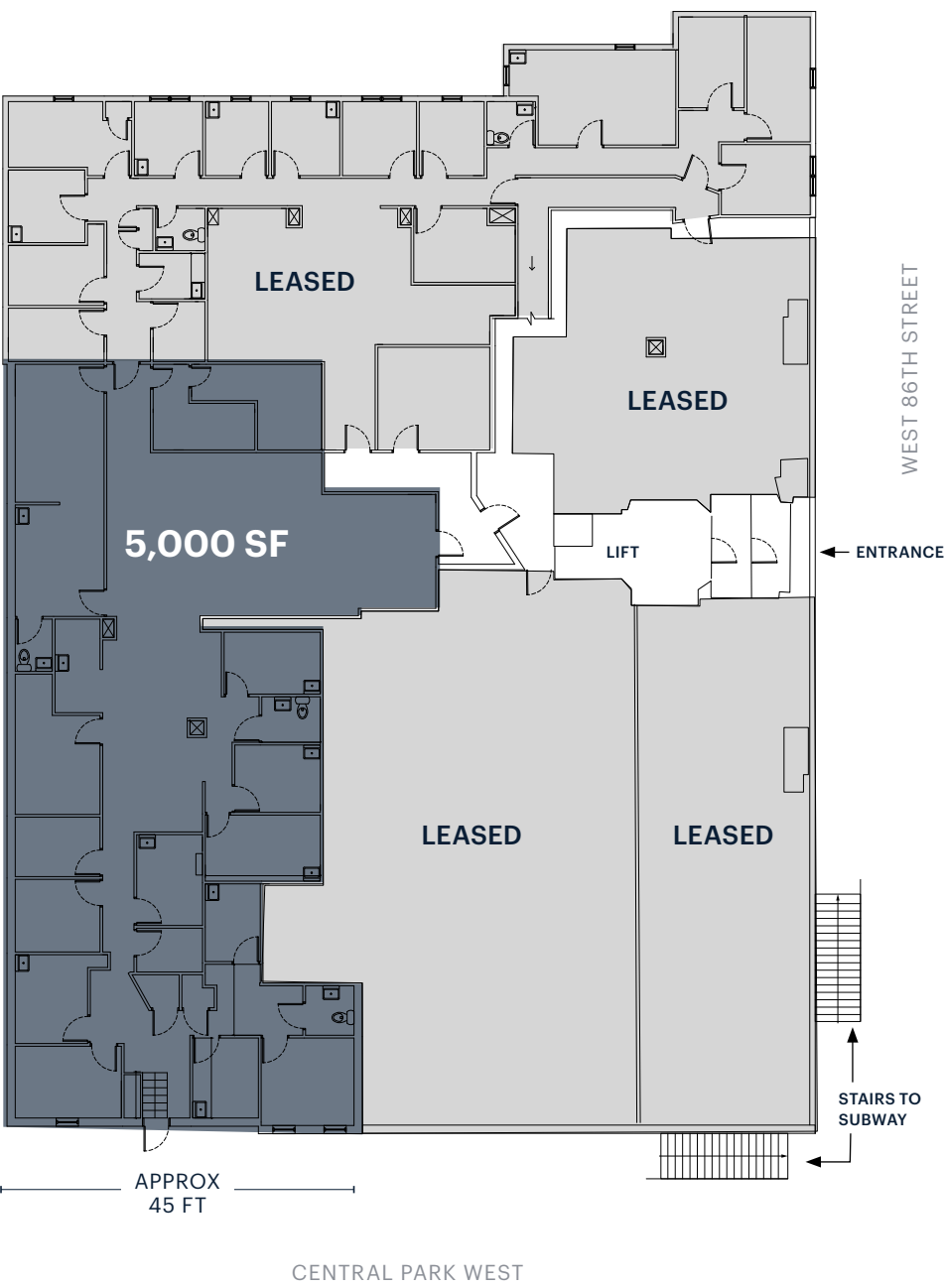
For Lease



RIPCO
REAL ESTATE

SPACE DETAILS

GROUND FLOOR



LOCATION

South West corner of West 86th Street and Central Park West

RENT

Upon request

NEIGHBORS

Quest Diagnostics, EOS Sleep Lab

SIZE

Ground Floor 5,000 SF

FRONTAGE

Central Park West 45 FT

CEILING HEIGHTS

Ground Floor 10 FT

STATUS

Vacant

TERM

Negotiable

POSSESSION

Immediate

TRANSPORTATION

2023 Ridership Report

Subway Station

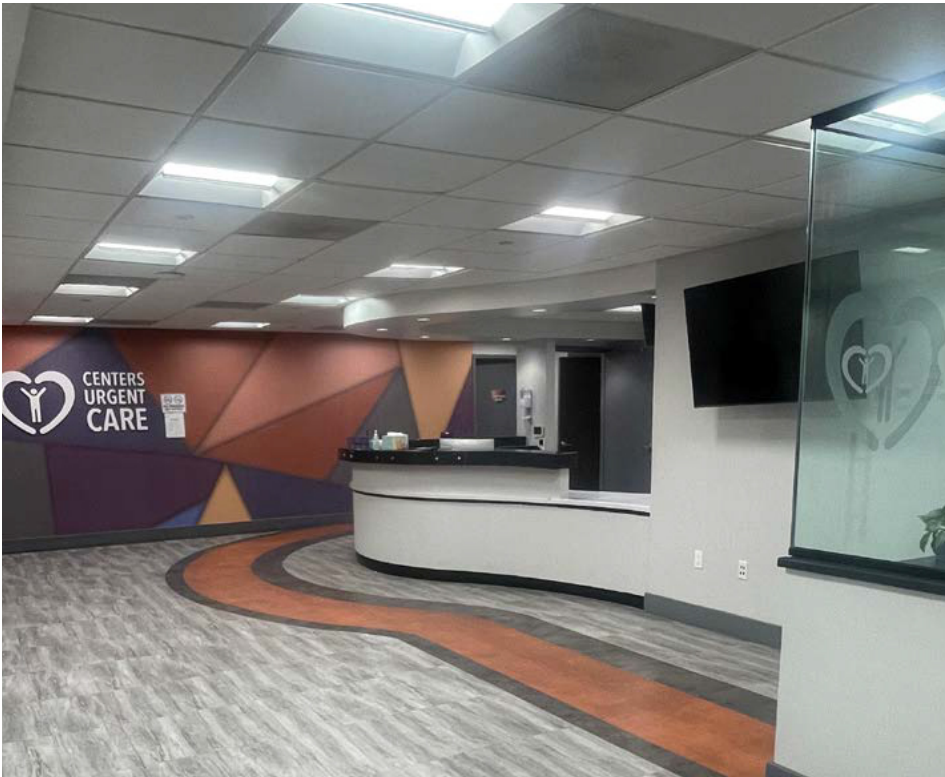
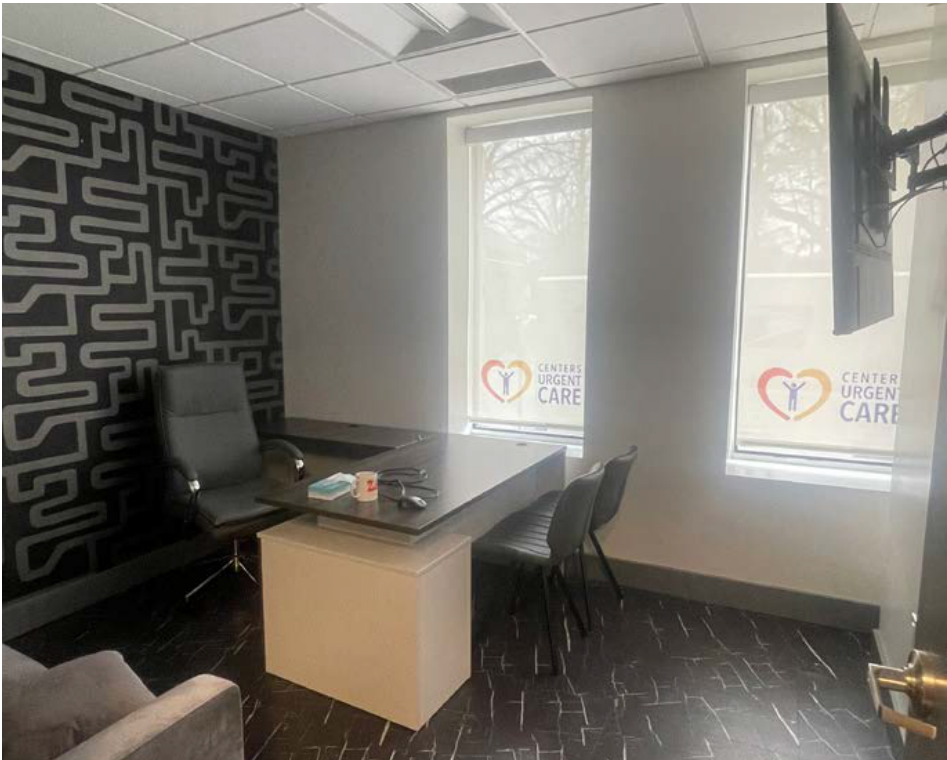
Annual	2,486,809
Weekday	7,976
Weekend	8,473

Service Bus

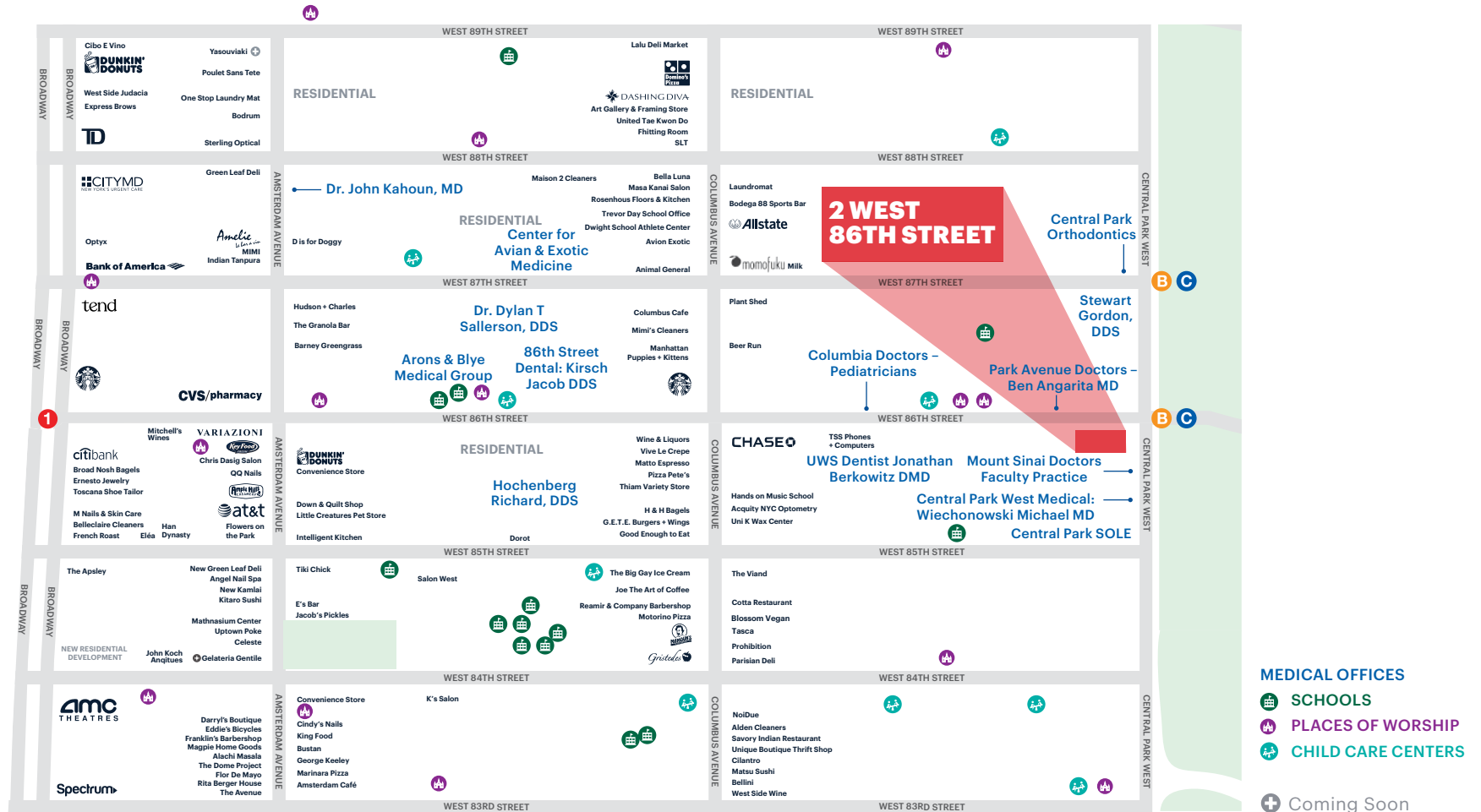
Annual	4,051,779
--------	-----------



INTERIOR PHOTOS



AREA RETAIL



CONTACT EXCLUSIVE AGENTS

ABRAHAM R DAYAN
 adayan@ripcony.com
 212.230.5886

DOUG KLEIMAN
 dkleiman@ripcony.com
 646.827.9980

RIPCO
 REAL ESTATE

150 East 58th Street
 15th Floor
 New York, NY 10115
 212.750.6565

Please visit us at ripcony.com for more information

This information has been secured from sources we believe to be reliable, but we make no representations as to the accuracy of the information. References to square footage are approximate. Tenant or Buyer must verify the information and bears all risk for any inaccuracies.