

FOR SUBLEASE

1551 OCEAN AVENUE

Santa Monica, CA 90401



EXCEPTIONAL BUILDING FOR THOSE WHO WANT TO MAKE A PRESENCE



JEFF JAROW • 310.395.2663 x105

JEFF@PARCOMMERCIAL.COM • LIC# 00870996

1551 OCEAN AVENUE

Santa Monica, CA 90401



SIZE: Approximately 8,400 square feet

RATE: \$35,000 per month, Gross

PARKING: 10 reserved spaces

AVAILABLE: Immediately

TERM: 3 years left with a 5 year option

- Tremendous identity across from Santa Monica Pier
- High profile location
- Heavy foot traffic
- Great demographics
- Well lit
- Private balconies
- Private elevator
- Private entrance
- Full floor - no neighbors



JEFF JAROW • 310.395.2663 x105

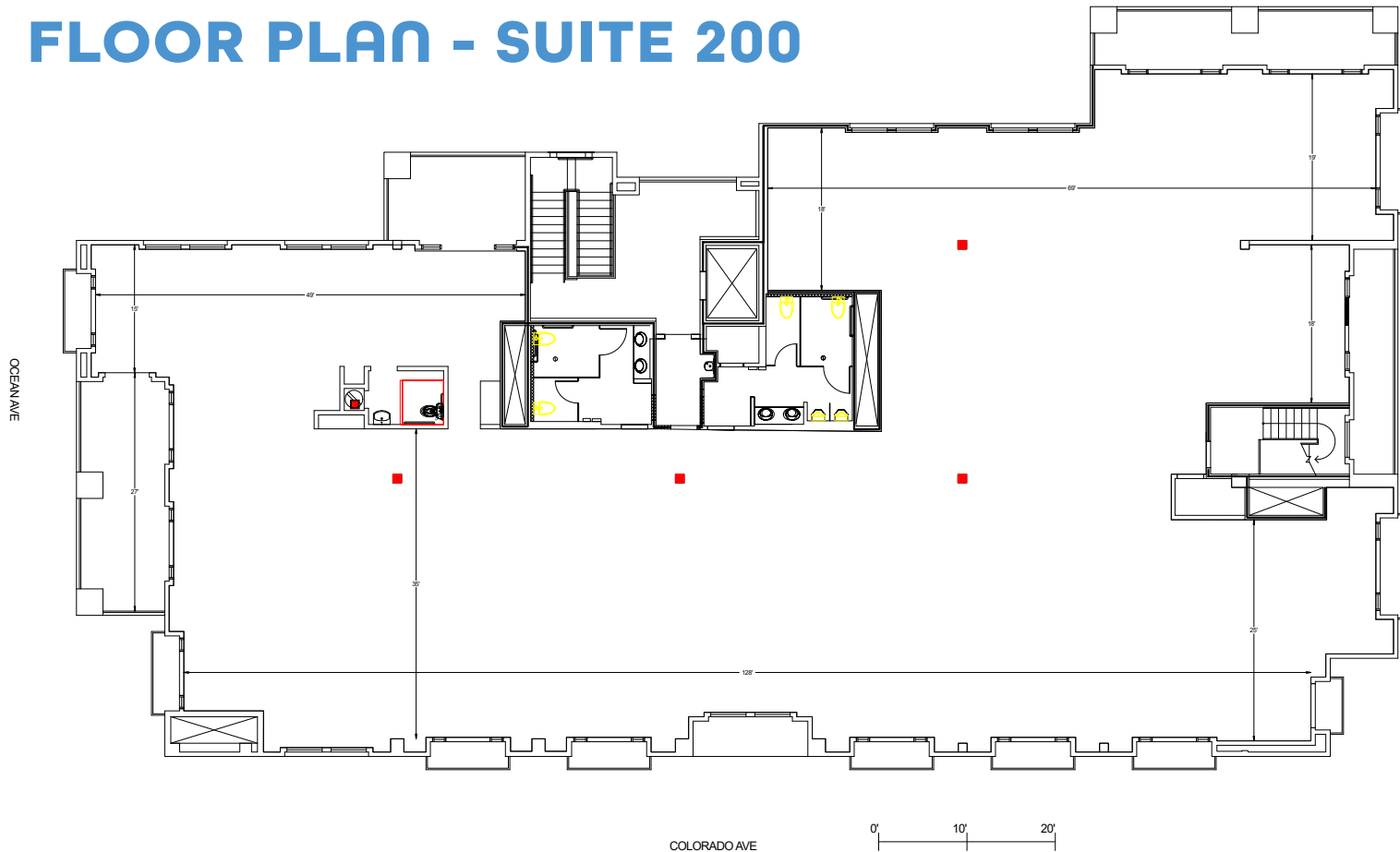
JEFF@PARCOMMERCIAL.COM • LIC# 00870996

All information furnished is from sources deemed reliable and which we believe to be correct, but no representation or guarantee is given as to its accuracy and is subject to errors and omissions. All measurements are approximate and have not been verified by Broker. You are advised to conduct an independent investigation to verify all information.

1551 OCEAN AVENUE

Santa Monica, CA 90401

FLOOR PLAN - SUITE 200



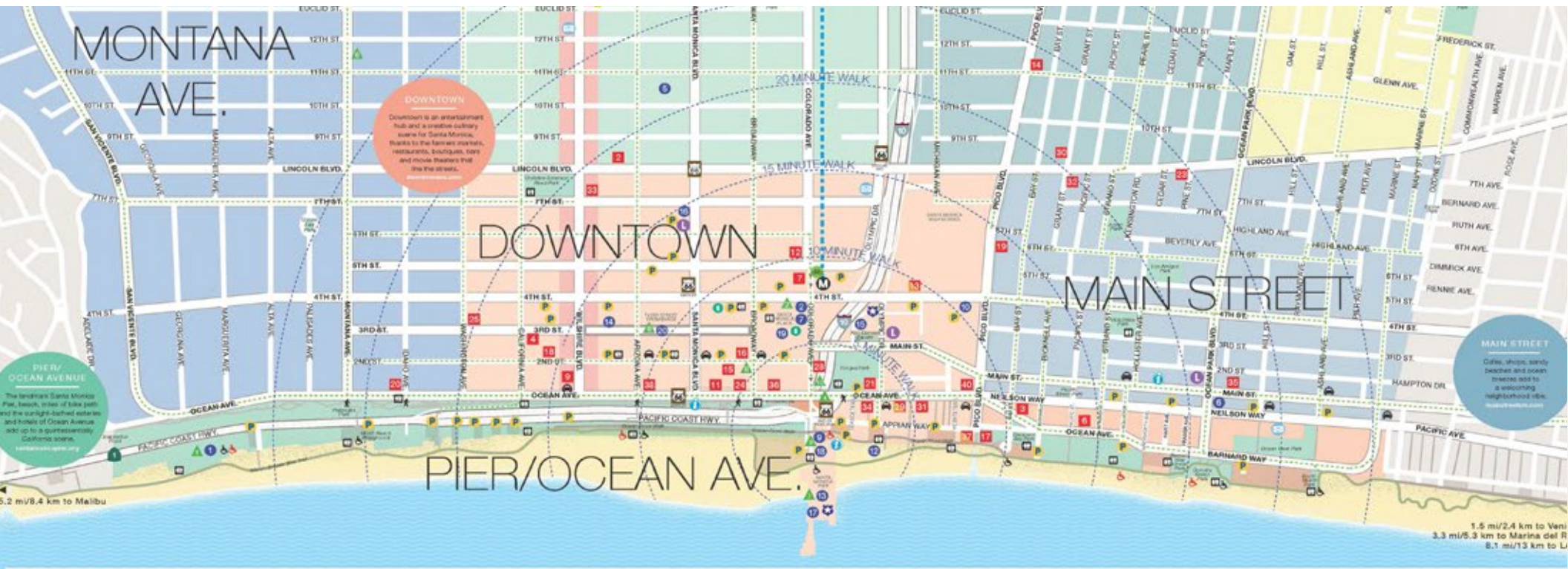
JEFF JAROW • 310.395.2663 x105
JEFF@PARCOMMERCIAL.COM • LIC# 00870996

All information furnished is from sources deemed reliable and which we believe to be correct, but no representation or guarantee is given as to its accuracy and is subject to errors and omissions. All measurements are approximate and have not been verified by Broker. You are advised to conduct an independent investigation to verify all information.

1551 OCEAN AVENUE

Santa Monica, CA 90401

AREA MAP



HOTELS

- 1 The Ambrose Hotel C8
- 2 American Motel L8
- 3 Bayside Hotel P13
- 4 Cal Mar Hotel Suites C7
- 5 Comfort Inn Santa Monica-West Los Angeles C8
- 6 The Cottage Santa Monica P14
- 7 Courtyard by Marriott Santa Monica H11
- 8 Days Inn by Wyndham Santa Monica C8
- 9 Fairmont Miramar Hotel & Bungalows C8
- 10 Gateway Hotel Santa Monica G10

- 11 The Georgian Hotel C8
- 12 Hampton Inn & Suites Santa Monica H11
- 13 Hilton Santa Monica Hotel & Suites H12
- 14 Holiday Motel K13
- 15 Hostelling International LA/Santa Monica C10
- 16 Hotel Carmel C10
- 17 Hotel Casa del Mar P13
- 18 The Hundley Hotel Santa Monica C8
- 19 Le Meridien Delina Santa Monica M13
- 20 Oceana Santa Monica C8

- 21 Ocean Lodge Hotel Santa Monica Beach C11
- 22 Ocean Park Hotel C17
- 23 Ocean Park Inn L15
- 24 Ocean View Hotel C10
- 25 Palhouse Santa Monica H6
- 26 Palm Motel J14
- 27 Pavilions Motel F17
- 28 The Pierside Santa Monica C11
- 29 Regent Santa Monica Beach C12
- 30 Rest Haven Motel L14

- 31 Sandbourne Santa Monica P12
- 32 Santa Monica Hotel L14
- 33 Santa Monica Proper Hotel L8
- 34 Sea Blue Hotel C11
- 35 Sea Shore Motel C16
- 36 Shore Hotel C10
- 37 Shutters on the Beach P13
- 38 Sonder The Beacon C8
- 39 SunStory by Best Western Santa Monica C15
- 40 Vicenoy Santa Monica C13

ATTRACTIONS

- 1 Annenberg Community Beach House P8
- 2 Arte Museum opening 2025 H11
- 3 Barker Hangar C20
- 4 Bergamot Station Arts Center C12
- 5 BroadStage K9
- 6 California Heritage Museum C16
- 7 Cayton Children's Museum H11
- 8 18th Street Arts Center H11
- 9 Heal the Bay Aquarium P11
- 10 Historic Belmar Park H13
- 11 Museum of Flying C20
- 12 Original Muscle Beach P11
- 13 Pacific Park P11
- 14 Santa Monica Art Museum H8
- 15 Santa Monica City Hall H11
- 16 Santa Monica History Museum M9
- 17 Santa Monica Pier C11
- 18 Santa Monica Pier Carousel P11
- 19 Santa Monica Place H10
- 20 Third Street Promenade P8



JEFF JAROW • 310.395.2663 x105

JEFF@PARCOMMERCIAL.COM • LIC# 00870996

All information furnished is from sources deemed reliable and which we believe to be correct, but no representation or guarantee is given as to its accuracy and is subject to errors and omissions. All measurements are approximate and have not been verified by Broker. You are advised to conduct an independent investigation to verify all information.