

FOR LEASE

## WESTFIELD SHOPPING CENTER

8027-8159 STATE AVENUE  
KANSAS CITY, KS

**PEAK**  
Real Estate Partners



### PEAK REAL ESTATE PARTNERS

8700 State Line Road, Suite 300  
Leawood, KS 66206

(913) 214-6445

[www.peakrealestatepartners.com](http://www.peakrealestatepartners.com)



### KIMBERLY TRANBARGER

Senior Vice President

(913) 406-8875

[kimberly@peakrep.com](mailto:kimberly@peakrep.com)



# PROPERTY FEATURES

## WESTFIELD SHOPPING CENTER



Real Estate Partners



- 900-1,037 SF available for lease
- Prime retail corridor in Kansas City, Kansas at 80th Street & State Avenue
- Easy access from I-70 with more than 66,000 vehicles per day
- Excellent mix of national and local tenants
- Join Save A Lot, CVS, CitiTrends, Family Dollar, and more

DEMOGRAPHICS	1-MILE	3-MILE	5-MILE
POPULATION	9,661	34,733	66,994
DAYTIME POPULATION	6,297	23,809	49,110
AVERAGE HOUSEHOLD INCOME	\$68,351	\$73,821	\$84,953
MEDIAN HOUSEHOLD INCOME	\$51,305	\$57,061	\$63,33
NUMBER OF HOUSEHOLDS	4,154	14,141	25,746



# PROPERTY AERIAL

WESTFIELD SHOPPING CENTER

# PEAK

Real Estate Partners



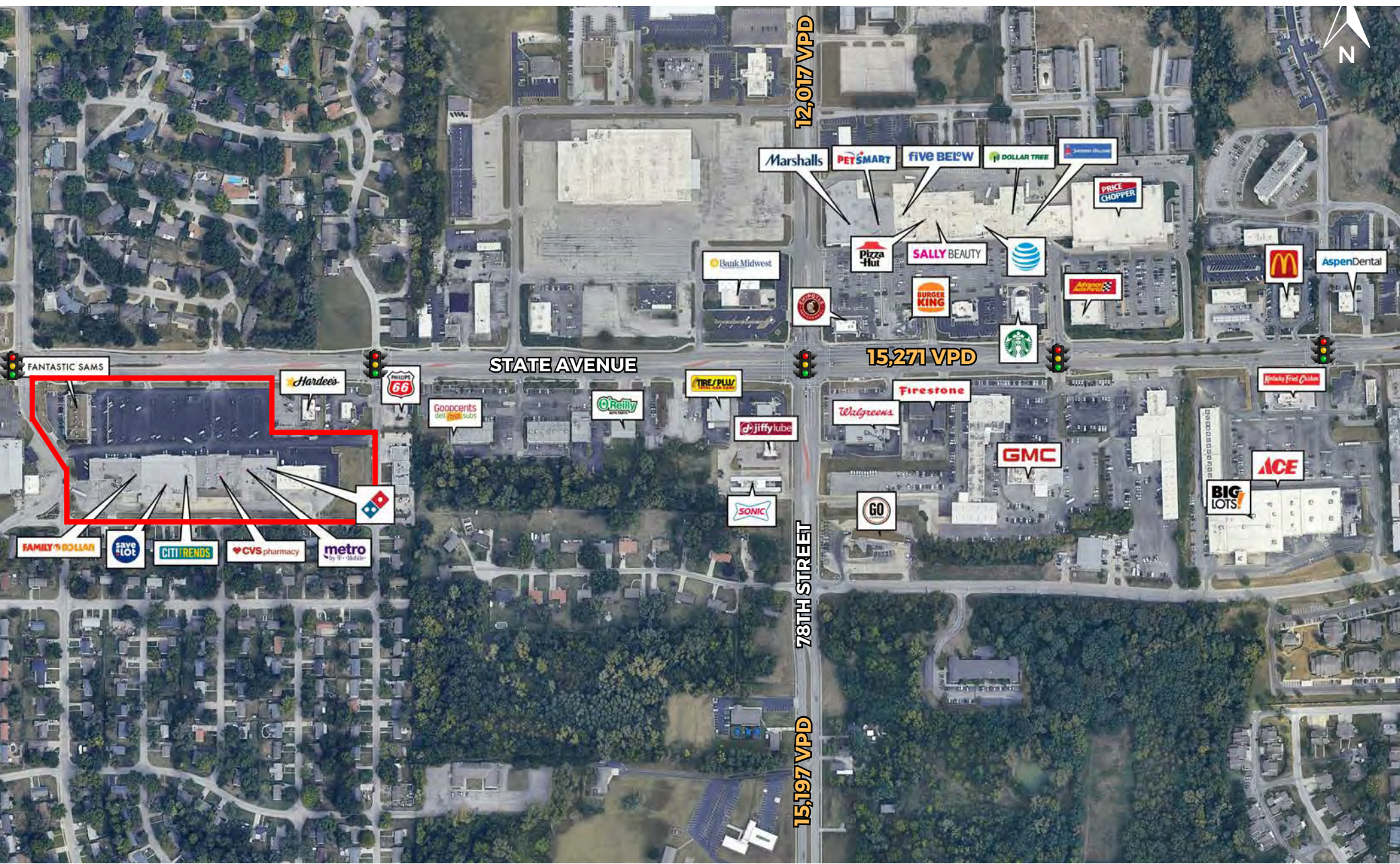


# SITE AERIAL

WESTFIELD SHOPPING CENTER

PEAK

Real Estate Partners



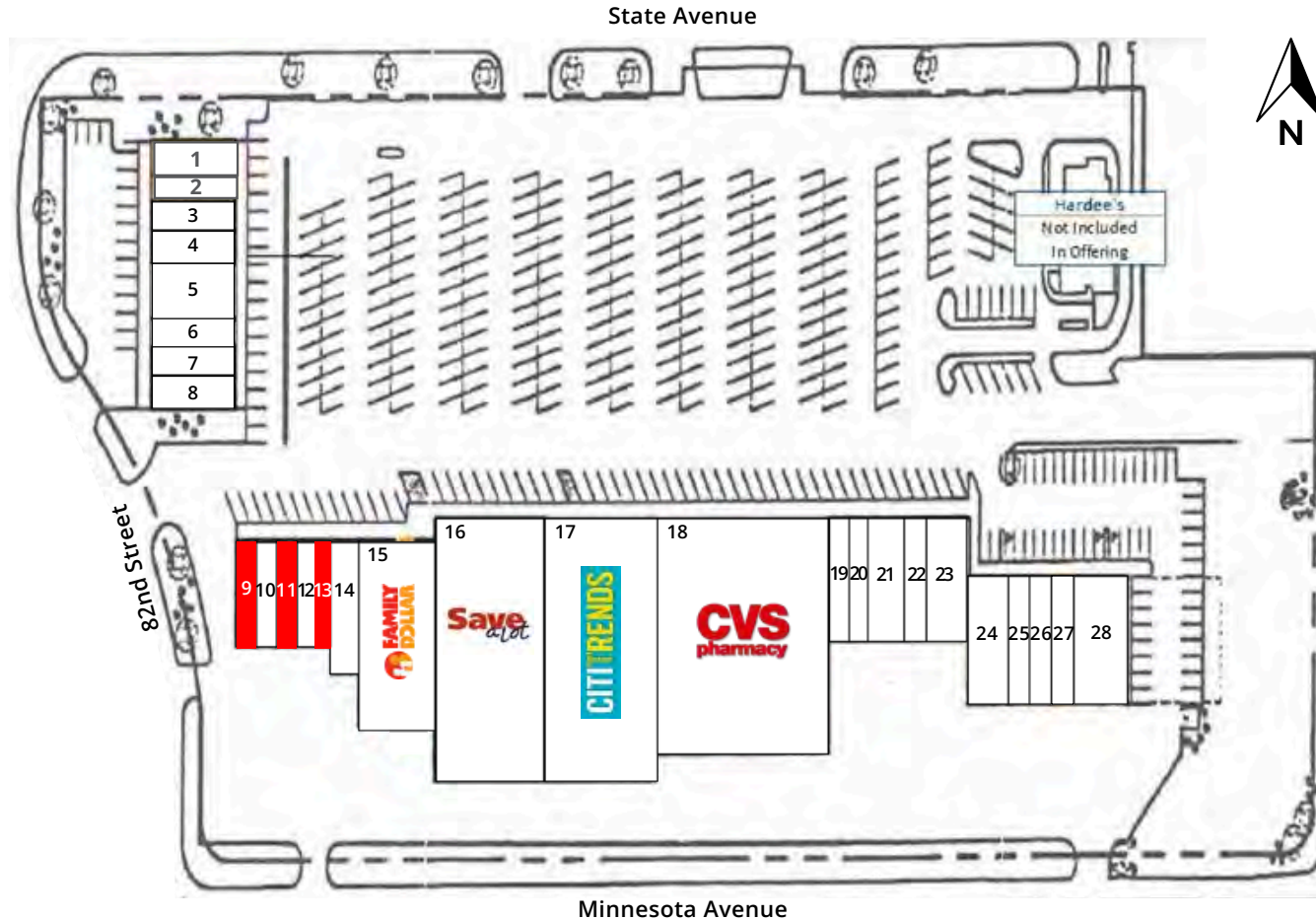


# SITE PLAN

## WESTFIELD SHOPPING CENTER



Real Estate Partners



### AVAILABLE SPACE

1	Tropicana
2	Tropicana
3	Fantastic Sam's
4	Envios El Aguila Check Cashing
5	American Family Insurance
6	American Family Insurance
7	Italian Delight
8	Italian Delight
9	Suite 8135 with 900 SF
10	Salon Luxe
11	Suite 8131 with 900 SF
12	FNBO Bank
13	Suite 8127 with 1,037 SF
14	Jackson Hewitt
15	Family Dollar
16	Save A Lot
17	CitiTrends
18	CVS
19	Elegant Nails
20	Metro PCS
21	Excel Cleaners
22	Crown Staffing
23	Domino's Pizza
24	Excel Cleaners
25	Trinity Primary Care
26	Trinity Career Institute
27	Gina's Braiding
28	Glamtrees

FOR LEASE

# WESTFIELD SHOPPING CENTER

8027-8159 STATE AVENUE  
KANSAS CITY, KS

**PEAK**  
Real Estate Partners



## PEAK REAL ESTATE PARTNERS

8700 State Line Road, Suite 300  
Leawood, KS 66206

(913) 214-6445

[www.peakrealestatepartners.com](http://www.peakrealestatepartners.com)



## KIMBERLY TRANBARGER

Senior Vice President

(913) 406-8875

[kimberly@peakrep.com](mailto:kimberly@peakrep.com)